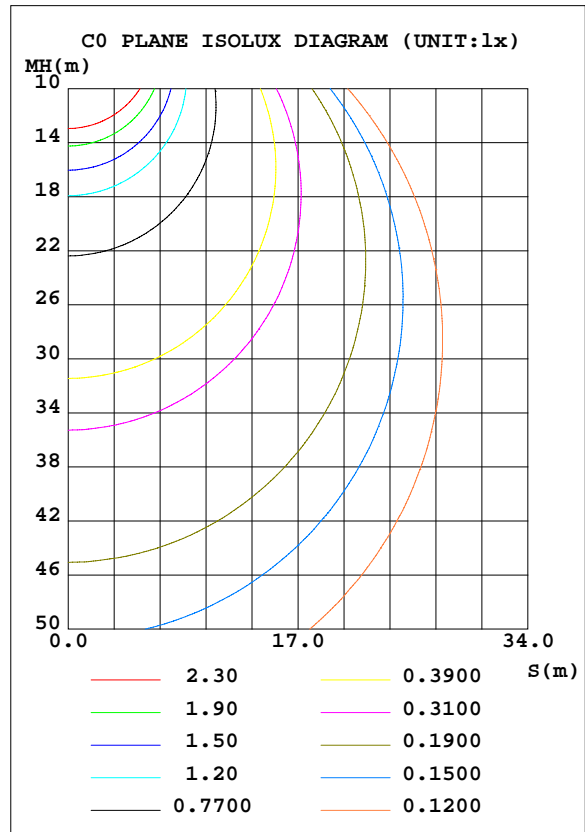
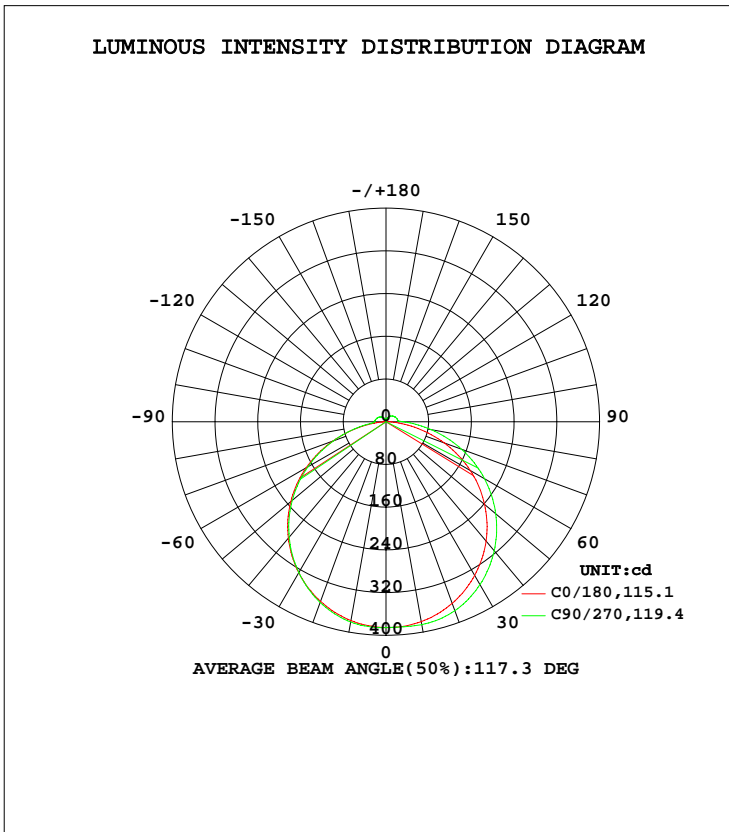


LUMINAIRE PHOTOMETRIC TEST REPORT

Test:U:120.0V I:0.0823A P:9.830W PF:0.9955 Lamp Flux:1259.25x1 lm		
NAME: Direct Linear Ambient Luminaires	TYPE:N/A	WEIGHT:N/A
SPEC.:N/A	DIM.: N/A	SERIAL No.:N/A
MFR.: OKT	SUR.:N/A	Shielding Angle:N/A

DATA OF LAMP		PHOTOMETRIC DATA Eff: 128.10 lm/W			
MODEL	RSZ171106501-10	I <sub>max</sub> (cd)	385.9	S/MH(C0/180)	1.28
NOMINAL POWER(W)	10	LOR(%)	100.0	S/MH(C90/270)	1.35
RATED VOLTAGE(V)	120	TOTAL FLUX(lm)	1259.3	η UP, DN(C0-180)	2.5,44.4
NOMINAL FLUX(lm)	1259.25	CIE CLASS	DIRECT	η UP, DN(C180-360)	2.9,50.2
LAMPS INSIDE	1	η up(%)	5.4	CIBSE SHR NOM	1.50
TEST VOLTAGE(V)	120	η down(%)	94.6	CIBSE SHR MAX	1.50



C Range: 0 - 360DEG  
 C Interval: 22.5DEG  
 Test Speed: 10.0deg/s  
 Temperature:25.2DEG  
 Operators:ben  
 Test Date:2017-11-06

γ Range: 0 - 180DEG  
 γ Interval: 1.0DEG  
 Test System:EVERFINE GO-R5000\_V2 SYSTEM V2.0.351  
 Humidity:45%  
 Test Distance:2.447m [K=1.0000]  
 Remarks:

ZONAL FLUX DIAGRAM

ZONAL FLUX DIAGRAM:

γ	C0	C45	C90	C135	C180	C225	C270	C315	γ	Φ zone	Φ total	%lum,lamp
10	378.1	380.0	380.9	381.0	380.2	383.0	385.9	382.0	0- 10	36.60	36.60	2.91,2.91
20	358.1	360.1	360.4	362.3	362.1	372.3	376.6	370.1	10- 20	105.9	142.5	11.3,11.3
30	326.5	327.3	326.3	330.2	332.2	348.3	352.0	344.6	20- 30	162.4	304.9	24.2,24.2
40	284.6	283.7	282.1	287.5	291.7	311.4	315.4	306.7	30- 40	198.6	503.5	40,40
50	232.6	231.1	229.0	235.4	241.1	263.9	268.3	258.6	40- 50	209.7	713.2	56.6,56.6
60	172.8	170.5	169.0	174.9	182.2	207.5	213.0	201.5	50- 60	194.1	907.3	72.1,72.1
70	106.1	104.7	104.8	109.1	116.1	143.9	150.7	137.6	60- 70	153.4	1061	84.2,84.2
80	39.18	42.35	44.47	45.35	48.29	77.48	86.08	71.35	70- 80	94.07	1155	91.7,91.7
90	3.465	16.38	21.72	15.79	4.376	24.05	32.17	20.80	80- 90	36.26	1191	94.6,94.6
100	2.066	15.40	20.42	14.76	1.645	16.35	22.19	16.13	90-100	16.30	1207	95.9,95.9
110	2.117	14.06	18.73	13.12	1.927	15.44	20.83	15.23	100-110	14.33	1222	97,97
120	2.029	12.40	16.54	11.45	1.768	14.06	18.96	13.86	110-120	12.27	1234	98,98
130	1.977	10.48	14.05	9.705	1.667	12.51	16.67	12.25	120-130	9.774	1244	98.8,98.8
140	2.016	8.321	11.35	7.555	1.758	10.55	14.05	10.43	130-140	7.150	1251	99.3,99.3
150	2.156	5.978	8.445	5.325	1.891	7.746	11.11	8.662	140-150	4.670	1256	99.7,99.7
160	2.179	3.788	5.222	3.771	1.906	5.305	7.753	6.576	150-160	2.540	1258	99.9,99.9
170	1.676	1.213	1.787	0.7213	1.456	3.091	5.187	4.992	160-170	1.016	1259	100,100
180	1.672	1.535	0.8020	1.214	1.643	1.622	1.036	1.350	170-180	0.1939	1259	100,100
DEG	LUMINOUS INTENSITY:cd Less than 25% Percent = 9.6 %								UNIT:lm			

Conical surface Flux(90deg): 608.62 lm

%lum = 48.3%  
 %lamp = 48.3%

Conical surface Flux(120deg): 907.3 lm

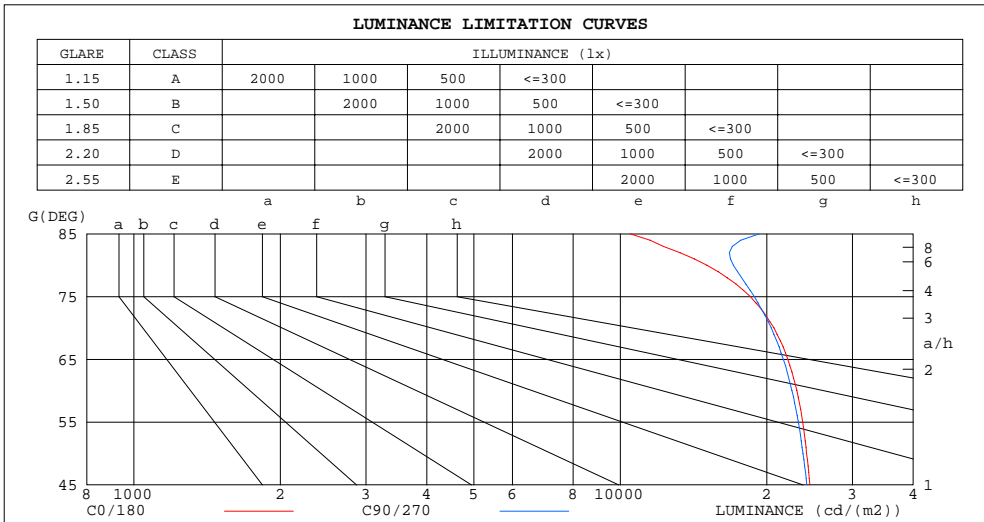
%lum = 72.1%  
 %lamp = 72.1%

C Range: 0 - 360DEG  
 C Interval: 22.5DEG  
 Test Speed: 10.0deg/s  
 Temperature:25.2DEG  
 Operators:ben  
 Test Date:2017-11-06

γ Range: 0 - 180DEG  
 γ Interval: 1.0DEG  
 Test System:EVERFINE GO-R5000\_V2 SYSTEM V2.0.351  
 Humidity:45%  
 Test Distance:2.447m [K=1.0000]  
 Remarks:

LUMINANCE LIMITATION CURVES

Test:U:120.0V I:0.0823A P:9.830W PF:0.9955 Lamp Flux:1259.25x1 lm		
NAME: Direct Linear Ambient Luminaires	TYPE:N/A	WEIGHT:N/A
SPEC.:N/A	DIM.: N/A	SERIAL No.:N/A
MFR.: OKT	SUR.:N/A	Shielding Angle:N/A



LUMINANCE cd/(m2)		
G( DEG)	C0/180	C90/270
85	10477	19307
80	15053	17068
75	18501	18855
70	20693	20428
65	22097	21632
60	23062	22530
55	23697	23221
50	24145	23745
45	24522	24185

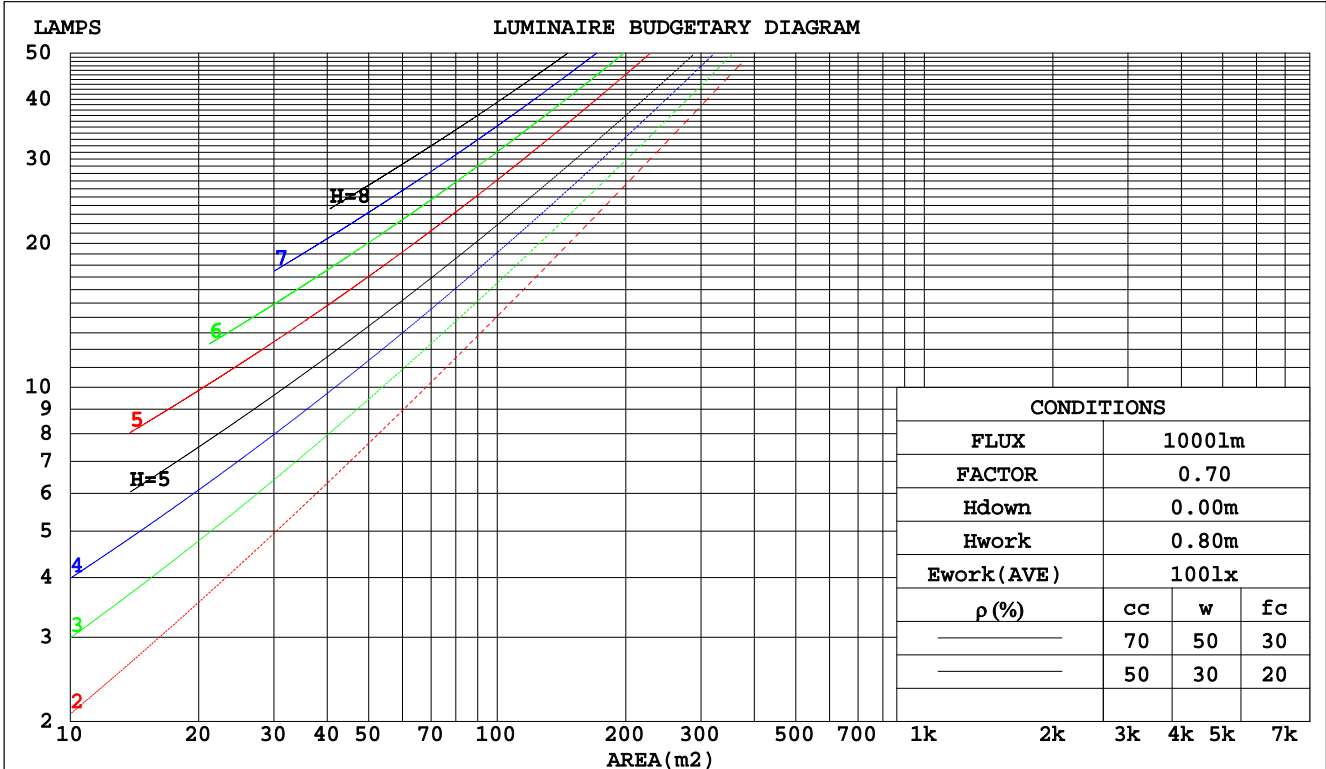
C Range: 0 - 360DEG  
 C Interval: 22.5DEG  
 Test Speed: 10.0deg/s  
 Temperature:25.2DEG  
 Operators:ben  
 Test Date:2017-11-06

γ Range: 0 - 180DEG  
 γ Interval: 1.0DEG  
 Test System:EVERFINE GO-R5000\_V2 SYSTEM V2.0.351  
 Humidity:45%  
 Test Distance:2.447m [K=1.0000]  
 Remarks:

CU AND LUMINAIRE BUDGETARY ESTIMATE DIAGRAM

Test:U:120.0V I:0.0823A P:9.830W PF:0.9955 Lamp Flux:1259.25x1 lm		
NAME: Direct Linear Ambient Luminaires	TYPE:N/A	WEIGHT:N/A
SPEC.:N/A	DIM.: N/A	SERIAL No.:N/A
MFR.: OKT	SUR.:N/A	Shielding Angle:N/A

pcc	80%			70%			50%			30%			10%			0
	50%	30%	10%	50%	30%	10%	50%	30%	10%	50%	30%	10%	50%	30%	10%	0
pw																
pfc	20%			20%			20%			20%			20%			0
RCR	RCR:Room Cavity Ratio															
	Coefficients of Utilization(CU)															
0.0	1.18	1.18	1.18	1.14	1.14	1.14	1.08	1.08	1.08	1.02	1.02	1.02	.97	.97	.97	.95
1.0	1.02	.97	.93	.99	.95	.91	.94	.90	.87	.89	.86	.84	.84	.82	.80	.78
2.0	.88	.81	.75	.86	.79	.74	.81	.76	.71	.77	.73	.69	.74	.70	.67	.64
3.0	.77	.69	.62	.75	.67	.61	.71	.65	.59	.68	.62	.58	.65	.60	.56	.54
4.0	.68	.59	.52	.66	.58	.52	.63	.56	.50	.60	.54	.49	.57	.52	.48	.45
5.0	.61	.52	.45	.59	.51	.44	.56	.49	.43	.54	.47	.42	.52	.46	.41	.39
6.0	.55	.45	.39	.53	.45	.39	.51	.43	.38	.49	.42	.37	.47	.41	.36	.34
7.0	.49	.40	.34	.48	.40	.34	.46	.39	.33	.44	.38	.33	.42	.37	.32	.30
8.0	.45	.36	.30	.44	.36	.30	.42	.35	.30	.41	.34	.29	.39	.33	.29	.27
9.0	.41	.33	.27	.40	.32	.27	.39	.32	.27	.37	.31	.26	.36	.30	.26	.24
10.0	.38	.30	.25	.37	.30	.24	.36	.29	.24	.35	.28	.24	.33	.28	.23	.22



C Range: 0 - 360DEG  
 C Interval: 22.5DEG  
 Test Speed: 10.0deg/s  
 Temperature:25.2DEG  
 Operators:ben  
 Test Date:2017-11-06

γ Range: 0 - 180DEG  
 γ Interval: 1.0DEG  
 Test System:EVERFINE GO-R5000\_V2 SYSTEM V2.0.351  
 Humidity:45%  
 Test Distance:2.447m [K=1.0000]  
 Remarks:

WEC AND CCEC

Test:U:120.0V I:0.0823A P:9.830W PF:0.9955 Lamp Flux:1259.25x1 lm														
NAME: Direct Linear Ambient Luminaires					TYPE:N/A					WEIGHT:N/A				
SPEC.:N/A					DIM.: N/A					SERIAL No.:N/A				
MFR.: OKT					SUR.:N/A					Shielding Angle:N/A				

ρcc	80%			70%			50%			30%			10%			0
ρw	50%	30%	10%	50%	30%	10%	50%	30%	10%	50%	30%	10%	50%	30%	10%	0
ρfc	20%			20%			20%			20%			20%			0
RCR	RCR:Room Cavity Ratio						Wall Exitance Coefficients(WEC)									
0.0																
1.0	.325	.185	.059	.316	.180	.057	.300	.172	.055	.285	.164	.053	.271	.157	.051	
2.0	.300	.165	.050	.293	.161	.050	.278	.155	.048	.264	.148	.046	.252	.143	.045	
3.0	.276	.147	.044	.269	.144	.043	.256	.139	.042	.243	.133	.041	.232	.129	.040	
4.0	.253	.131	.039	.247	.129	.038	.235	.125	.037	.224	.120	.036	.214	.116	.035	
5.0	.233	.119	.034	.228	.117	.034	.217	.113	.033	.207	.109	.033	.198	.106	.032	
6.0	.216	.108	.031	.211	.106	.031	.201	.103	.030	.192	.100	.029	.184	.097	.029	
7.0	.200	.099	.028	.196	.098	.028	.187	.095	.027	.179	.092	.027	.172	.089	.026	
8.0	.187	.091	.026	.183	.090	.025	.175	.087	.025	.168	.085	.024	.161	.083	.024	
9.0	.175	.085	.024	.171	.083	.023	.164	.081	.023	.157	.079	.023	.151	.077	.022	
10.0	.164	.079	.022	.161	.078	.022	.154	.076	.021	.148	.074	.021	.143	.072	.021	

ρcc	80%			70%			50%			30%			10%			0
ρw	50%	30%	10%	50%	30%	10%	50%	30%	10%	50%	30%	10%	50%	30%	10%	0
ρfc	20%			20%			20%			20%			20%			0
RCR	RCR:Room Cavity Ratio						Ceiling Cavity Exitance Coefficients(CCEC)									
0.0	.232	.232	.232	.198	.198	.198	.135	.135	.135	.078	.078	.078	.025	.025	.025	
1.0	.223	.198	.175	.191	.170	.150	.130	.117	.104	.075	.068	.061	.024	.022	.020	
2.0	.215	.174	.139	.184	.150	.120	.126	.103	.084	.073	.060	.049	.023	.019	.016	
3.0	.208	.156	.116	.178	.135	.100	.122	.094	.070	.071	.055	.041	.023	.018	.014	
4.0	.200	.143	.100	.172	.124	.087	.118	.086	.061	.068	.051	.036	.022	.016	.012	
5.0	.193	.133	.089	.165	.115	.078	.114	.080	.055	.066	.047	.033	.021	.015	.011	
6.0	.186	.125	.081	.159	.108	.071	.110	.076	.050	.064	.045	.030	.021	.015	.010	
7.0	.179	.118	.076	.154	.102	.066	.106	.072	.047	.062	.042	.028	.020	.014	.009	
8.0	.172	.112	.071	.148	.097	.062	.103	.068	.044	.060	.040	.026	.019	.013	.009	
9.0	.166	.108	.068	.143	.093	.059	.099	.066	.042	.058	.039	.025	.019	.013	.008	
10.0	.160	.103	.065	.138	.090	.057	.096	.063	.040	.056	.037	.024	.018	.012	.008	

C Range: 0 - 360DEG  
 C Interval: 22.5DEG  
 Test Speed: 10.0deg/s  
 Temperature:25.2DEG  
 Operators:ben  
 Test Date:2017-11-06

γ Range: 0 - 180DEG  
 γ Interval: 1.0DEG  
 Test System:EVERFINE GO-R5000\_V2 SYSTEM V2.0.351  
 Humidity:45%  
 Test Distance:2.447m [K=1.0000]  
 Remarks:

UGR(Unified Glare Rating) Table

Test:U:120.0V I:0.0823A P:9.830W PF:0.9955 Lamp Flux:1259.25x1 lm										
NAME: Direct Linear Ambient Luminaires					TYPE:N/A			WEIGHT:N/A		
SPEC.:N/A					DIM.: N/A			SERIAL No.:N/A		
MFR.: OKT					SUR.:N/A			Shielding Angle:N/A		
ceiling/cavity	0.7	0.7	0.5	0.5	0.3	0.7	0.7	0.5	0.5	0.3
walls	0.5	0.3	0.5	0.3	0.3	0.5	0.3	0.5	0.3	0.3
working plane	0.2	0.2	0.2	0.2	0.2	0.2	0.2	0.2	0.2	0.2
Room dimensions	Viewed crosswise					Viewed endwise				
x = 2H y = 2H	23.4	24.8	23.7	25.1	25.4	23.2	24.7	23.6	25.0	25.3
3H	24.8	26.2	25.2	26.5	26.9	24.7	26.1	25.1	26.4	26.8
4H	25.4	26.7	25.8	27.0	27.4	25.3	26.6	25.7	26.9	27.3
6H	25.7	26.9	26.1	27.3	27.7	25.7	26.9	26.1	27.3	27.7
8H	25.8	27.0	26.2	27.3	27.8	25.8	27.0	26.3	27.4	27.8
12H	25.8	26.9	26.2	27.3	27.8	26.0	27.1	26.4	27.5	27.9
4H 2H	23.9	25.2	24.3	25.6	25.9	23.8	25.1	24.2	25.5	25.8
3H	25.6	26.7	26.0	27.1	27.5	25.5	26.6	25.9	27.0	27.4
4H	26.2	27.3	26.7	27.7	28.1	26.2	27.2	26.6	27.6	28.1
6H	26.7	27.6	27.2	28.0	28.5	26.7	27.6	27.2	28.1	28.5
8H	26.8	27.7	27.3	28.1	28.6	26.9	27.7	27.4	28.2	28.7
12H	26.9	27.6	27.4	28.1	28.6	27.1	27.9	27.6	28.3	28.9
8H 4H	26.5	27.3	27.0	27.8	28.3	26.4	27.3	26.9	27.7	28.2
6H	27.0	27.7	27.6	28.2	28.8	27.1	27.8	27.6	28.3	28.8
8H	27.2	27.9	27.8	28.4	28.9	27.4	28.0	27.9	28.5	29.1
12H	27.3	27.9	27.9	28.4	29.0	27.6	28.2	28.2	28.7	29.3
12H 4H	26.5	27.2	27.0	27.7	28.2	26.4	27.2	26.9	27.7	28.2
6H	27.1	27.7	27.6	28.2	28.8	27.1	27.7	27.7	28.3	28.8
8H	27.3	27.8	27.9	28.4	29.0	27.4	28.0	28.0	28.5	29.1
Variations with the observer position at spacings:										
S = 1.0H	+ 0.2 / - 0.2					+ 0.2 / - 0.2				
1.5H	+ 0.2 / - 0.3					+ 0.2 / - 0.3				
2.0H	+ 0.2 / - 0.3					+ 0.2 / - 0.3				

CIE Pub.117 Corrected 1259 lm Total Lamp Luminous Flux.(8log(F/F0) = 0.8)

C Range: 0 - 360DEG  
 C Interval: 22.5DEG  
 Test Speed: 10.0deg/s  
 Temperature:25.2DEG  
 Operators:ben  
 Test Date:2017-11-06

γ Range: 0 - 180DEG  
 γ Interval: 1.0DEG  
 Test System:EVERFINE GO-R5000\_V2 SYSTEM V2.0.351  
 Humidity:45%  
 Test Distance:2.447m [K=1.0000]  
 Remarks:

**UTILIZATION FACTORS TABLE**

Test:U:120.0V I:0.0823A P:9.830W PF:0.9955 Lamp Flux:1259.25x1 lm		
NAME: Direct Linear Ambient Luminaires	TYPE:N/A	WEIGHT:N/A
SPEC.:N/A	DIM.: N/A	SERIAL No.:N/A
MFR.: OKT	SUR.:N/A	Shielding Angle:N/A

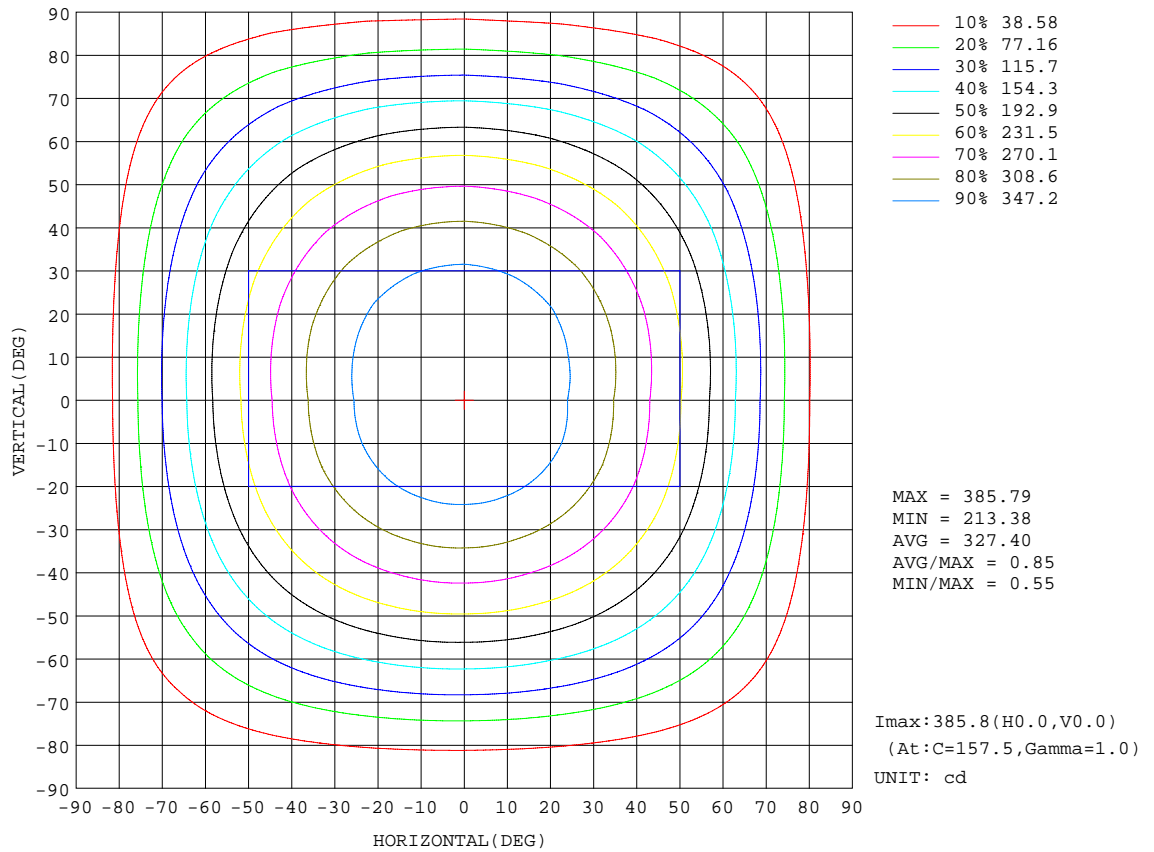
REFLECTANCE										
Ceiling	0.8	0.8	0.8	0.7	0.7	0.7	0.5	0.5	0.5	0
Walls	0.7	0.5	0.3	0.7	0.5	0.3	0.7	0.5	0.3	0
Working plane	0.2	0.2	0.2	0.2	0.2	0.2	0.2	0.2	0.2	0
ROOM INDEX	UTILIZATION FACTORS(PERCENT) $k(RI) \times RCR = 5$									
k = 0.60	55	43	36	54	43	36	52	42	35	29
0.80	65	53	45	63	52	45	61	51	44	37
1.00	73	61	54	71	60	53	69	62	53	45
1.25	80	69	61	78	68	61	75	66	60	52
1.50	85	75	67	83	73	66	79	71	65	57
2.00	92	83	76	90	81	75	86	79	73	64
2.50	96	88	81	94	86	80	89	83	78	68
3.00	100	92	86	97	90	85	92	87	82	72
4.00	104	98	92	101	95	91	96	91	87	77
5.00	106	101	97	103	99	95	98	94	91	80
ROOM INDEX	UF(total)									Direct
According to DIN EN 13032-2 2004			Suspended				SHRNM = 1.25			

C Range: 0 - 360DEG  
 C Interval: 22.5DEG  
 Test Speed: 10.0deg/s  
 Temperature:25.2DEG  
 Operators:ben  
 Test Date:2017-11-06

$\gamma$  Range: 0 - 180DEG  
 $\gamma$  Interval: 1.0DEG  
 Test System:EVERFINE GO-R5000\_V2 SYSTEM V2.0.351  
 Humidity:45%  
 Test Distance:2.447m [K=1.0000]  
 Remarks:

ISOCANDELA DIAGRAM

Test:U:120.0V I:0.0823A P:9.830W PF:0.9955 Lamp Flux:1259.25x1 lm		
NAME: Direct Linear Ambient Luminaires	TYPE:N/A	WEIGHT:N/A
SPEC.:N/A	DIM.: N/A	SERIAL No.:N/A
MFR.: OKT	SUR.:N/A	Shielding Angle:N/A



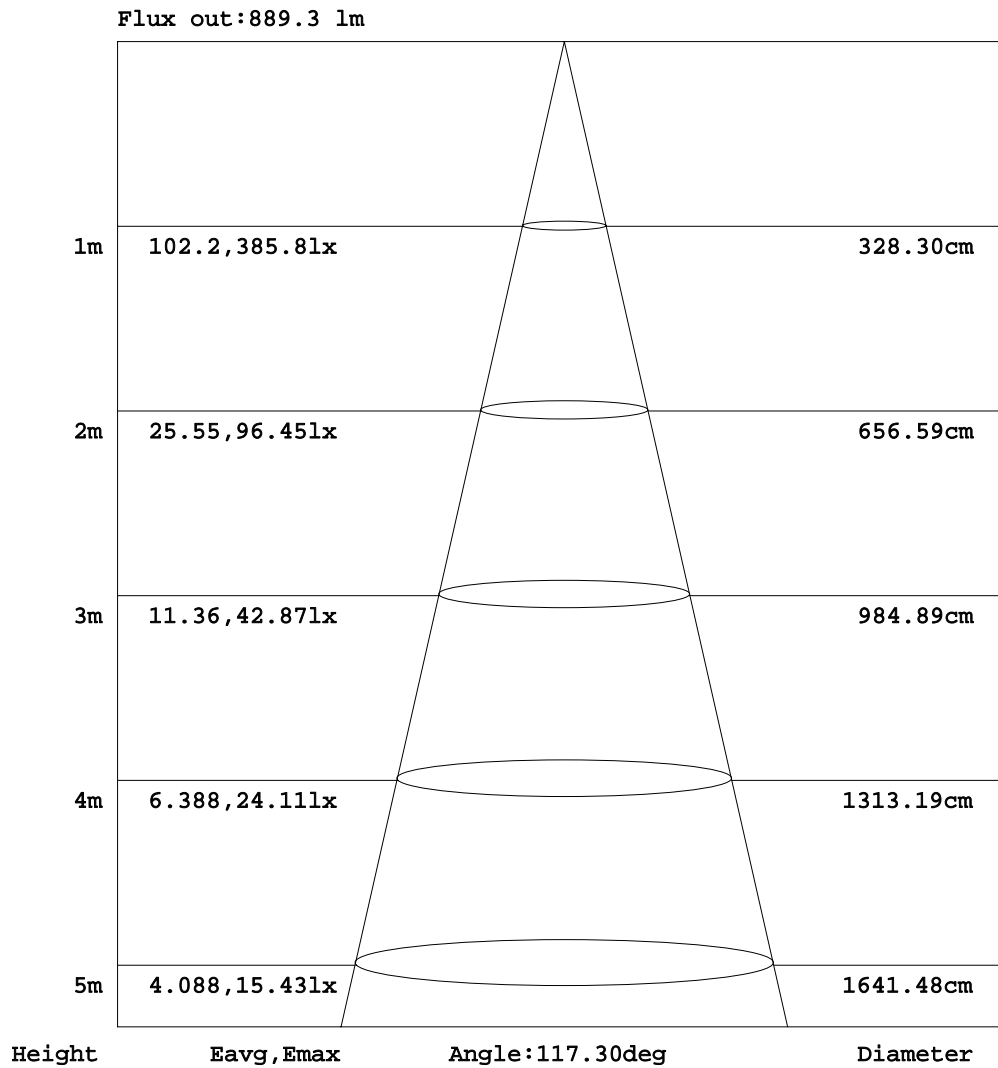
C Range: 0 - 360DEG  
 C Interval: 22.5DEG  
 Test Speed: 10.0deg/s  
 Temperature: 25.2DEG  
 Operators: ben  
 Test Date: 2017-11-06

γ Range: 0 - 180DEG  
 γ Interval: 1.0DEG  
 Test System: EVERFINE GO-R5000\_V2 SYSTEM V2.0.351  
 Humidity: 45%  
 Test Distance: 2.447m [K=1.0000]  
 Remarks:



AAI Figure

Test:U:120.0V I:0.0823A P:9.830W PF:0.9955 Lamp Flux:1259.25x1 lm		
NAME: Direct Linear Ambient Luminaires	TYPE:N/A	WEIGHT:N/A
SPEC.:N/A	DIM.: N/A	SERIAL No.:N/A
MFR.: OKT	SUR.:N/A	Shielding Angle:N/A



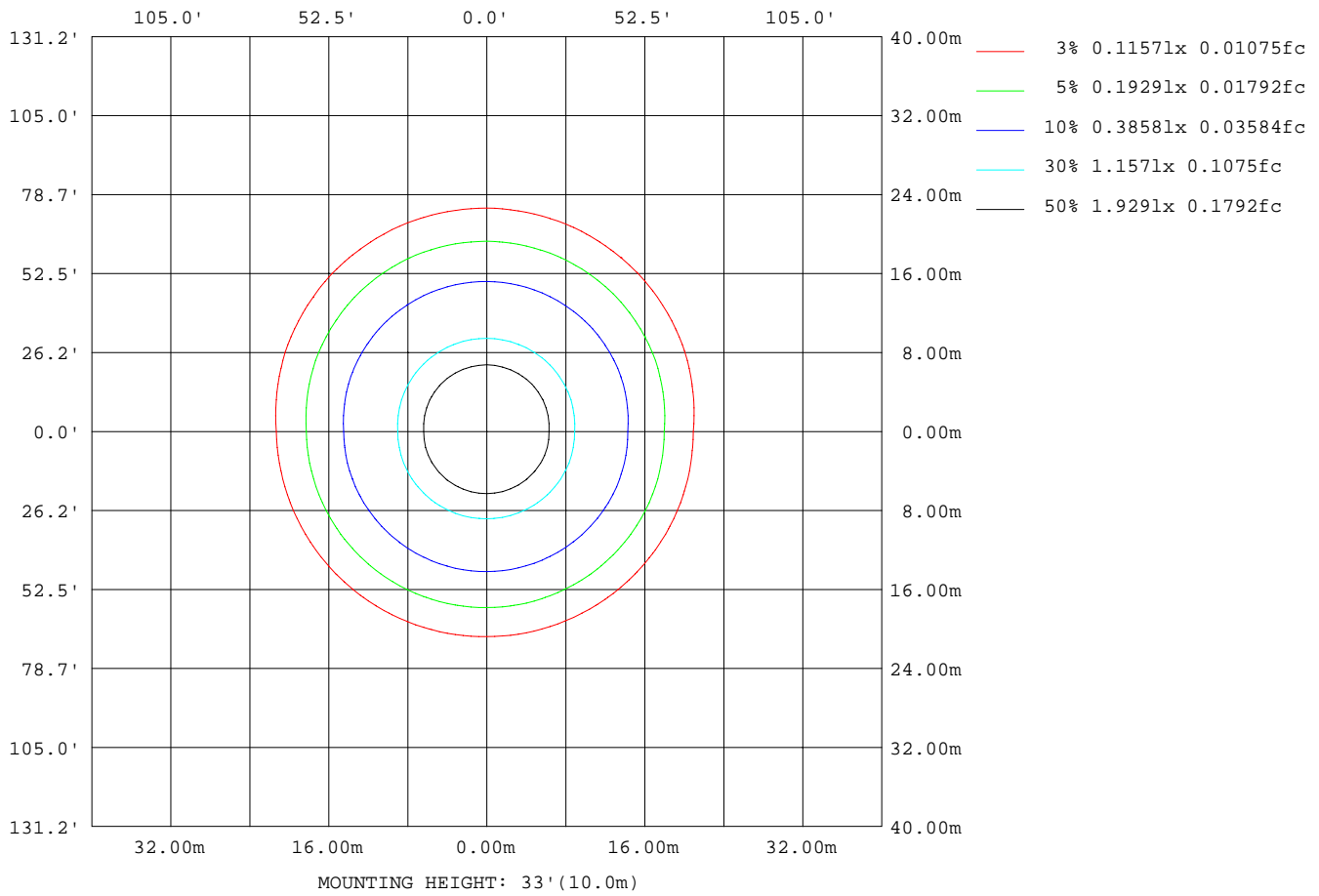
Note:The Curves indicate the illuminated area and the average illumination when the luminaire is at different distance.

C Range: 0 - 360DEG  
 C Interval: 22.5DEG  
 Test Speed: 10.0deg/s  
 Temperature:25.2DEG  
 Operators:ben  
 Test Date:2017-11-06

γ Range: 0 - 180DEG  
 γ Interval: 1.0DEG  
 Test System:EVERFINE GO-R5000\_V2 SYSTEM V2.0.351  
 Humidity:45%  
 Test Distance:2.447m [K=1.0000]  
 Remarks:

ISOLUX DIAGRAM

Test:U:120.0V I:0.0823A P:9.830W PF:0.9955 Lamp Flux:1259.25x1 lm		
NAME: Direct Linear Ambient Luminaires	TYPE:N/A	WEIGHT:N/A
SPEC.:N/A	DIM.: N/A	SERIAL No.:N/A
MFR.: OKT	SUR.:N/A	Shielding Angle:N/A



C Range: 0 - 360DEG  
 C Interval: 22.5DEG  
 Test Speed: 10.0deg/s  
 Temperature:25.2DEG  
 Operators:ben  
 Test Date:2017-11-06

γ Range: 0 - 180DEG  
 γ Interval: 1.0DEG  
 Test System:EVERFINE GO-R5000\_V2 SYSTEM V2.0.351  
 Humidity:45%  
 Test Distance:2.447m [K=1.0000]  
 Remarks:

LED Avg.L Report

Test:U:120.0V I:0.0823A P:9.830W PF:0.9955 Lamp Flux:1259.25x1 lm		
NAME: Direct Linear Ambient Luminaires	TYPE:N/A	WEIGHT:N/A
SPEC.:N/A	DIM.: N/A	SERIAL No.:N/A
MFR.: OKT	SUR.:N/A	Shielding Angle:N/A

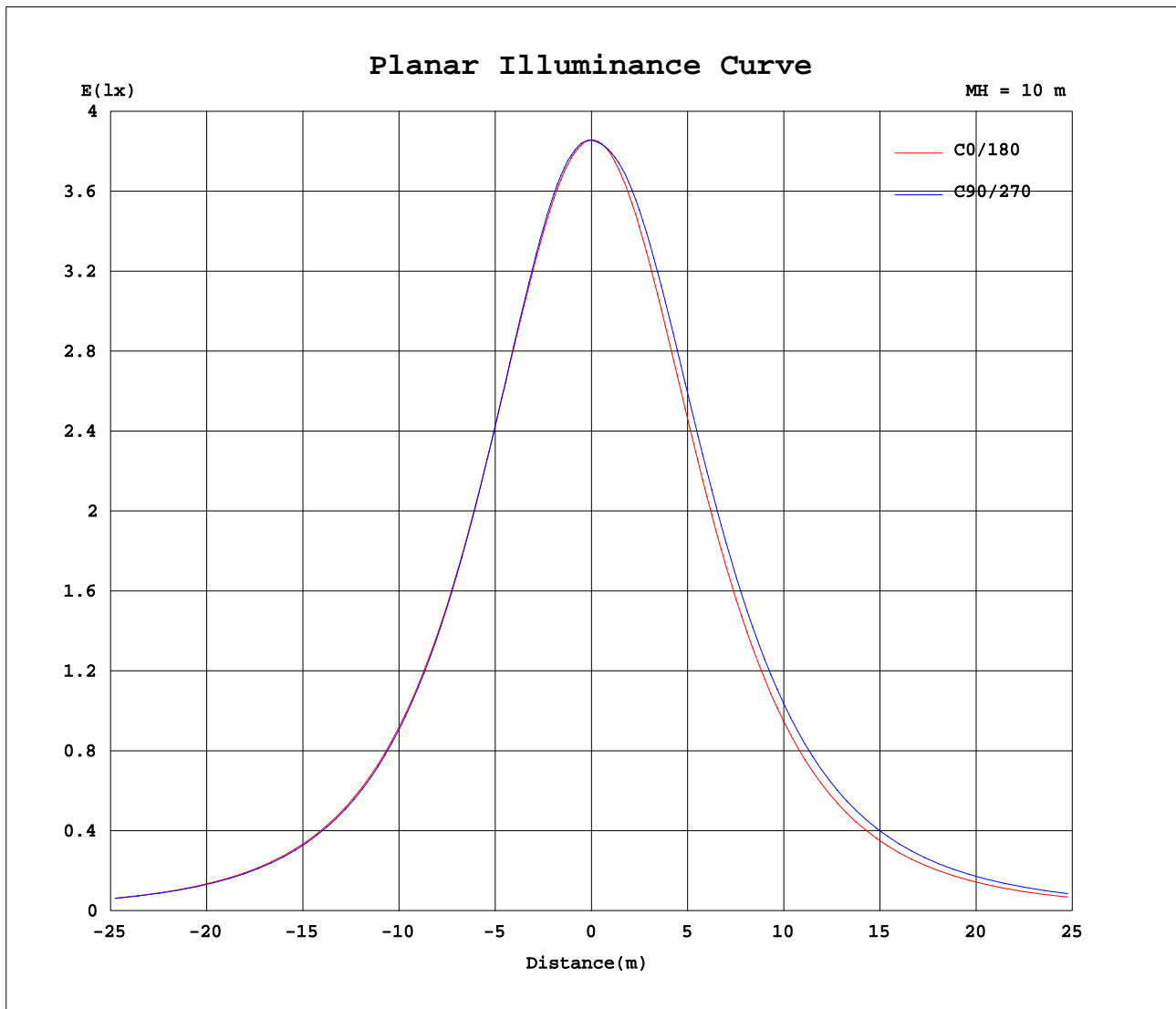
AvgL	cd/m2
L_0~180(65)av	22841
L_0~180(75)av	19762
L_0~180(85)av	12715
L_90~270(65)av	25213
L_90~270(75)av	24659
L_90~270(85)av	31075
L_45(65)av	24732
L_45(75)av	23355
L_45(85)av	25118

Standard: GB/T 29293-2012

C Range: 0 - 360DEG  
 C Interval: 22.5DEG  
 Test Speed: 10.0deg/s  
 Temperature:25.2DEG  
 Operators:ben  
 Test Date:2017-11-06

γ Range: 0 - 180DEG  
 γ Interval: 1.0DEG  
 Test System:EVERFINE GO-R5000\_V2 SYSTEM V2.0.351  
 Humidity:45%  
 Test Distance:2.447m [K=1.0000]  
 Remarks:

Planar Illuminance Curve



C Range: 0 - 360DEG  
 C Interval: 22.5DEG  
 Test Speed: 10.0deg/s  
 Temperature: 25.2DEG  
 Operators: ben  
 Test Date: 2017-11-06

$\gamma$  Range: 0 - 180DEG  
 $\gamma$  Interval: 1.0DEG  
 Test System: EVERFINE GO-R5000\_V2 SYSTEM V2.0.351  
 Humidity: 45%  
 Test Distance: 2.447m [K=1.0000]  
 Remarks:

LUMINOUS DISTRIBUTION INTENSITY DATA

Test:U:120.0V I:0.0823A P:9.830W PF:0.9955 Lamp Flux:1259.25x1 lm		
NAME: Direct Linear Ambient Luminaires	TYPE:N/A	WEIGHT:N/A
SPEC.:N/A	DIM.: N/A	SERIAL No.:N/A
MFR.: OKT	SUR.:N/A	Shielding Angle:N/A

Table--1

UNIT: cd

C(DEG) γ (DEG)	0	22.5	45	67.5	90	112.5	135	157.5	180	202.5	225	247.5	270	292.5	315	337.5			
0	386	386	386	386	386	386	386	386	386	386	386	386	386	386	386	386			
5	383	384	384	385	385	385	385	385	384	384	385	385	386	385	384	384			
10	378	379	380	380	381	381	381	381	380	381	383	385	386	384	382	379			
15	370	371	372	372	372	373	374	374	373	375	379	383	383	381	377	373			
20	358	360	360	360	360	361	362	363	362	366	372	376	377	374	370	363			
25	344	346	345	344	345	346	348	349	349	355	362	366	366	364	359	351			
30	327	329	327	326	326	328	330	333	332	340	348	352	352	349	345	336			
35	307	309	307	305	305	307	310	313	313	323	331	335	335	332	327	318			
40	285	286	284	282	282	284	287	291	292	303	311	315	315	312	307	298			
45	260	261	258	257	257	258	263	267	268	280	289	293	293	290	284	274			
50	233	234	231	229	229	231	235	239	241	255	264	268	268	265	259	248			
55	204	204	202	200	200	202	206	210	213	228	237	241	242	238	231	220			
60	173	173	171	169	169	171	175	179	182	198	208	212	213	209	202	190			
65	140	140	138	137	137	139	142	146	150	166	176	182	182	178	170	158			
70	106	106	105	104	105	106	109	112	116	132	144	150	151	146	138	124			
75	71.8	71.8	72.1	72.5	73.2	74.3	76.0	77.4	81.7	98.1	110	117	118	114	104	90.1			
80	39.2	40.4	42.3	43.6	44.5	45.1	45.4	45.0	48.3	64.3	77.5	84.8	86.1	81.3	71.3	56.9			
85	13.7	16.9	20.8	24.1	25.2	24.3	22.0	19.4	19.6	33.8	47.1	54.5	56.0	51.6	41.5	27.8			
90	3.46	9.85	16.4	20.4	21.7	20.1	15.8	8.90	4.38	13.2	24.1	30.7	32.2	28.5	20.8	10.6			
95	3.41	9.47	15.9	19.9	21.1	19.6	15.3	8.51	2.83	9.54	16.7	21.2	22.7	21.0	16.5	9.39			
100	2.07	9.11	15.4	19.3	20.4	18.9	14.8	8.13	1.64	9.36	16.3	20.7	22.2	20.5	16.1	9.23			
105	2.10	8.71	14.8	18.5	19.7	18.1	14.1	7.63	1.76	9.22	16.0	20.2	21.5	20.0	15.8	8.94			
110	2.12	8.27	14.1	17.7	18.7	17.3	13.1	7.09	1.93	9.01	15.4	19.6	20.8	19.3	15.2	8.64			
115	2.08	7.77	13.3	16.7	17.7	16.3	12.2	6.19	2.02	8.76	14.8	18.7	20.0	18.5	14.6	8.30			
120	2.03	7.22	12.4	15.6	16.5	15.3	11.4	5.36	1.77	8.42	14.1	17.8	19.0	17.6	13.9	7.93			
125	1.99	6.62	11.5	14.5	15.3	14.2	10.7	4.49	1.73	7.92	13.3	16.8	17.9	16.6	13.1	7.53			
130	1.98	5.94	10.5	13.3	14.0	13.0	9.71	4.01	1.67	7.36	12.5	15.7	16.7	15.5	12.2	7.02			
135	1.98	5.14	9.42	12.0	12.7	11.8	8.65	3.49	1.69	6.82	11.6	14.6	15.4	14.3	11.3	6.41			
140	2.02	4.36	8.32	10.7	11.3	10.5	7.55	3.28	1.76	6.08	10.5	13.3	14.0	13.1	10.4	5.89			
145	2.09	3.84	7.20	9.27	9.92	9.09	6.36	3.15	1.85	5.16	9.25	11.8	12.6	11.7	9.55	5.59			
150	2.16	2.85	5.98	7.77	8.44	7.58	5.33	2.42	1.89	4.83	7.75	10.2	11.1	10.4	8.66	5.41			
155	2.21	1.85	4.78	6.26	6.85	6.08	4.42	1.45	1.95	4.32	6.17	8.48	9.50	9.18	7.73	5.24			
160	2.18	1.62	3.79	4.80	5.22	4.71	3.77	1.27	1.91	3.54	5.31	6.67	7.75	7.71	6.58	5.05			
165	2.00	1.31	1.89	3.52	4.06	3.56	1.83	0.94	1.71	2.34	4.38	5.31	5.96	6.09	5.40	4.93			
170	1.68	0.85	1.21	1.37	1.79	1.36	0.72	0.72	1.46	1.58	3.09	4.14	5.19	5.24	4.99	4.47			
175	1.58	0.93	0.78	0.90	0.95	0.61	0.69	0.90	1.36	1.36	1.98	2.47	3.41	4.06	3.89	3.06			
180	1.67	1.67	1.53	1.16	0.80	0.94	1.21	1.57	1.64	1.64	1.62	1.52	1.04	0.90	1.35	1.49			

C Range: 0 - 360DEG  
 C Interval: 22.5DEG  
 Test Speed: 10.0deg/s  
 Temperature:25.2DEG  
 Operators:ben  
 Test Date:2017-11-06

γ Range: 0 - 180DEG  
 γ Interval: 1.0DEG  
 Test System:EVERFINE GO-R5000\_V2 SYSTEM V2.0.351  
 Humidity:45%  
 Test Distance:2.447m [K=1.0000]  
 Remarks: