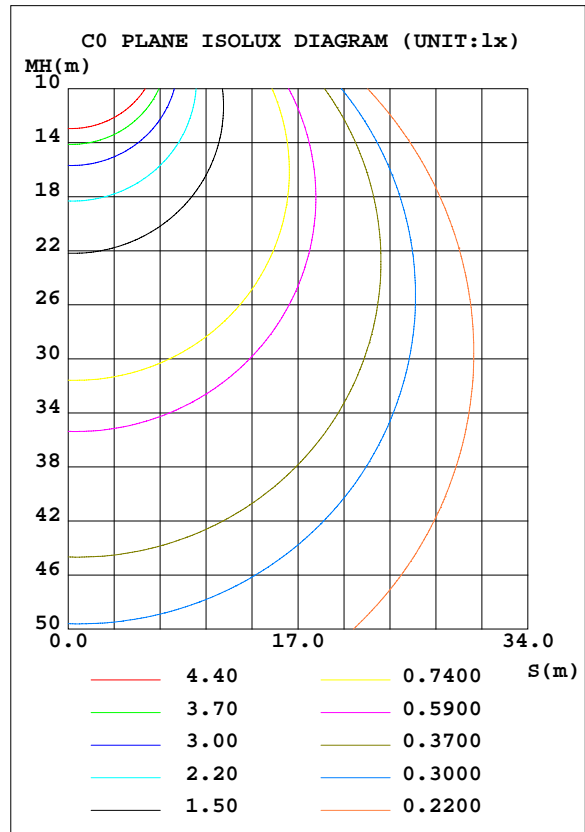
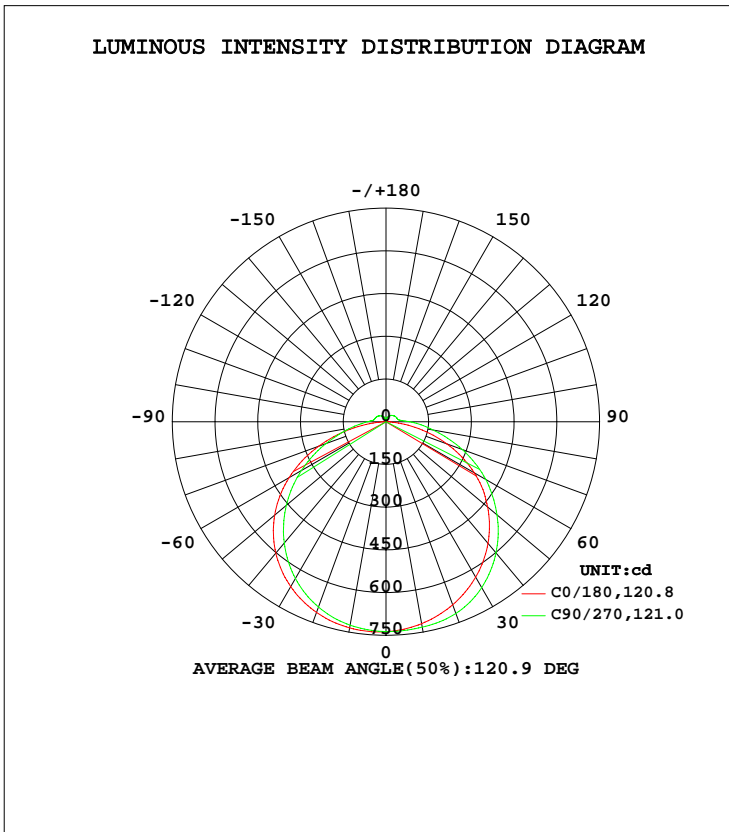


LUMINAIRE PHOTOMETRIC TEST REPORT

Test:U:120.0V I:0.1674A P:19.98W PF:0.9943 Lamp Flux:2540.65x1 lm		
NAME: Direct Linear Ambient Luminaires	TYPE:N/A	WEIGHT:N/A
SPEC.:N/A	DIM.: N/A	SERIAL No.:N/A
MFR.: OKT	SUR.:N/A	Shielding Angle:N/A

DATA OF LAMP		PHOTOMETRIC DATA Eff: 127.16 lm/W			
MODEL	RSZ171106502-10	I _{max} (cd)	738.9	S/MH(C0/180)	1.27
NOMINAL POWER(W)	20	LOR(%)	100.0	S/MH(C90/270)	1.35
RATED VOLTAGE(V)	120	TOTAL FLUX(lm)	2540.7	η UP, DN(C0-180)	2.9,45.3
NOMINAL FLUX(lm)	2540.65	CIE CLASS	DIRECT	η UP, DN(C180-360)	3.1,48.7
LAMPS INSIDE	1	η up(%)	6.0	CIBSE SHR NOM	1.50
TEST VOLTAGE(V)	120	η down(%)	94.0	CIBSE SHR MAX	1.50



C Range: 0 - 360DEG
 C Interval: 22.5DEG
 Test Speed: 10.0deg/s
 Temperature:25.2DEG
 Operators:ben
 Test Date:2017-11-06

γ Range: 0 - 180DEG
 γ Interval: 1.0DEG
 Test System:EVERFINE GO-R5000_V2 SYSTEM V2.0.351
 Humidity:45%
 Test Distance:2.447m [K=1.0000]
 Remarks:

ZONAL FLUX DIAGRAM

ZONAL FLUX DIAGRAM:

γ	C0	C45	C90	C135	C180	C225	C270	C315	γ	Φ zone	Φ total	%lum, lamp
10	735.0	731.3	725.4	720.3	720.0	724.1	732.3	735.1	0- 10	69.91	69.91	2.75,2.75
20	712.7	706.4	692.5	685.7	684.2	699.1	716.7	720.0	10- 20	202.7	272.6	10.7,10.7
30	669.0	658.8	635.9	630.5	629.9	654.5	672.1	684.9	20- 30	314.1	586.8	23.1,23.1
40	601.9	587.0	555.6	555.0	557.2	585.7	600.7	622.8	30- 40	389.2	976.0	38.4,38.4
50	510.1	491.3	457.0	460.3	465.8	495.9	509.6	535.3	40- 50	416.8	1393	54.8,54.8
60	393.1	374.3	344.0	347.8	357.5	390.5	404.4	426.2	50- 60	391.8	1785	70.2,70.2
70	251.8	240.5	223.7	223.3	227.7	267.4	285.0	296.9	60- 70	315.2	2100	82.6,82.6
80	99.82	117.6	126.3	110.4	91.43	142.5	168.8	160.9	70- 80	200.1	2300	90.5,90.5
90	5.681	47.64	65.85	46.12	3.807	55.72	83.73	61.56	80- 90	89.49	2389	94,94
100	5.269	33.49	42.38	30.18	3.860	30.77	43.57	33.66	90-100	37.42	2427	95.5,95.5
110	3.898	31.15	39.95	28.49	4.240	29.51	40.75	32.02	100-110	29.45	2456	96.7,96.7
120	3.912	28.21	36.55	26.03	4.465	27.56	37.78	29.38	110-120	25.79	2482	97.7,97.7
130	4.116	24.87	32.29	23.14	5.495	24.98	33.91	26.01	120-130	21.22	2503	98.5,98.5
140	4.985	20.91	27.50	19.69	6.312	21.56	29.30	22.65	130-140	16.20	2519	99.2,99.2
150	5.730	16.84	22.19	16.13	6.771	16.87	23.97	19.58	140-150	11.18	2531	99.6,99.6
160	5.573	11.94	16.30	11.62	6.380	9.472	17.83	16.36	150-160	6.592	2537	99.9,99.9
170	5.737	6.555	9.244	6.053	6.098	6.546	10.69	11.22	160-170	2.849	2540	100,100
180	6.701	5.711	3.290	5.964	6.689	6.579	5.319	5.850	170-180	0.6647	2541	100,100
DEG	LUMINOUS INTENSITY:cd Less than 25% Percent = 9.6 %								UNIT:lm			

Conical surface Flux(90deg): 1184.2 lm

%lum = 46.6%
%lamp = 46.6%

Conical surface Flux(120deg): 1784.5 lm

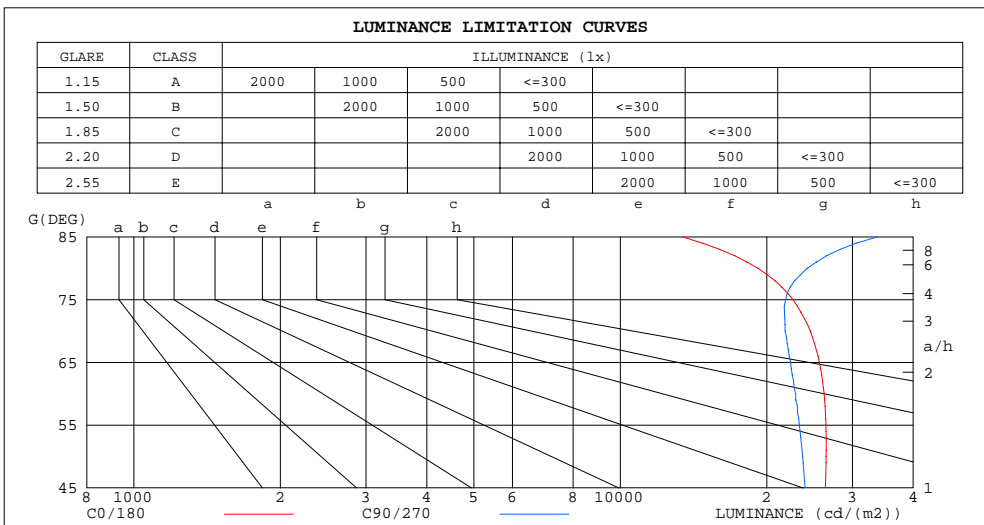
%lum = 70.2%
%lamp = 70.2%

C Range: 0 - 360DEG
C Interval: 22.5DEG
Test Speed: 10.0deg/s
Temperature:25.2DEG
Operators:ben
Test Date:2017-11-06

γ Range: 0 - 180DEG
γ Interval: 1.0DEG
Test System:EVERFINE GO-R5000_V2 SYSTEM V2.0.351
Humidity:45%
Test Distance:2.447m [K=1.0000]
Remarks:

LUMINANCE LIMITATION CURVES

Test:U:120.0V I:0.1674A P:19.98W PF:0.9943 Lamp Flux:2540.65x1 lm		
NAME: Direct Linear Ambient Luminaires	TYPE:N/A	WEIGHT:N/A
SPEC.:N/A	DIM.: N/A	SERIAL No.:N/A
MFR.: OKT	SUR.:N/A	Shielding Angle:N/A



LUMINANCE cd/(m2)		
G(DEG)	C0/180	C90/270
85	13419	33785
80	19182	24241
75	22635	21881
70	24564	21807
65	25649	22371
60	26233	22935
55	26460	23326
50	26485	23705
45	26389	23973

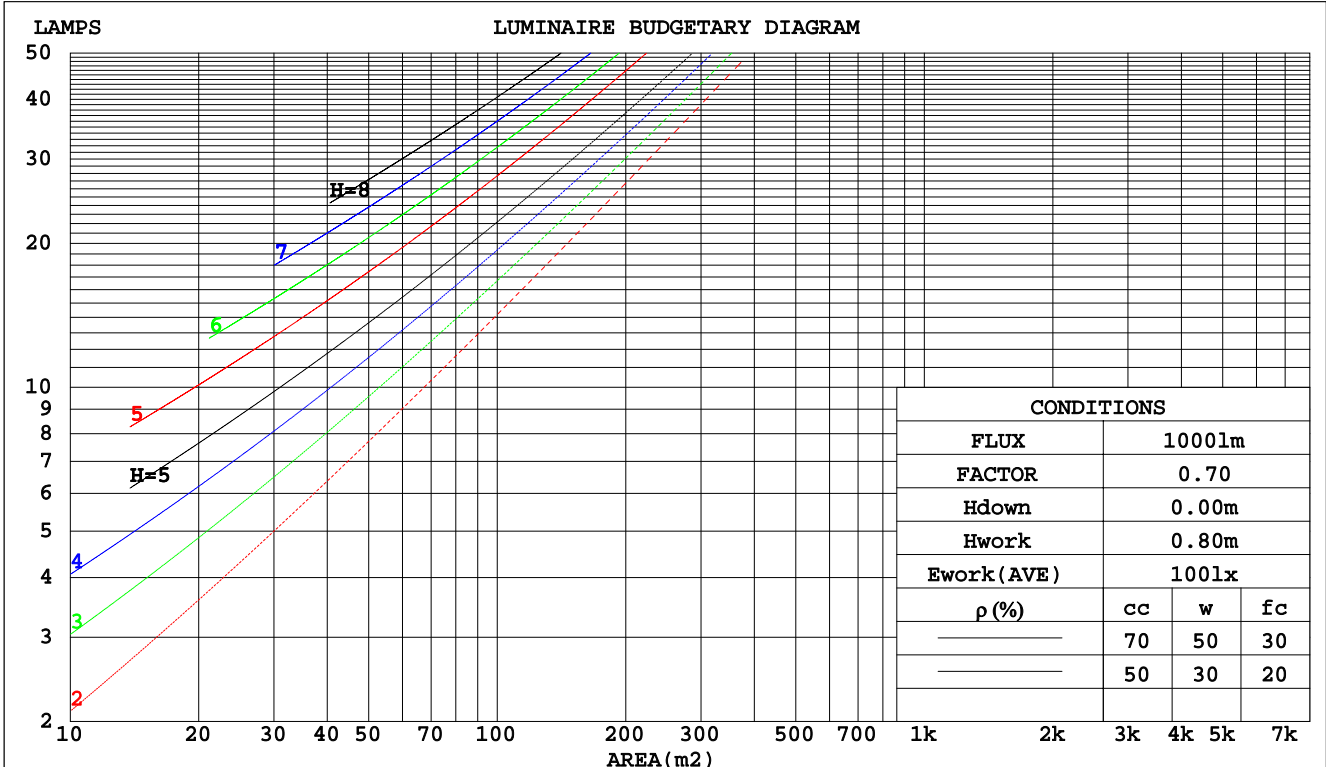
C Range: 0 - 360DEG
 C Interval: 22.5DEG
 Test Speed: 10.0deg/s
 Temperature:25.2DEG
 Operators:ben
 Test Date:2017-11-06

γ Range: 0 - 180DEG
 γ Interval: 1.0DEG
 Test System:EVERFINE GO-R5000_V2 SYSTEM V2.0.351
 Humidity:45%
 Test Distance:2.447m [K=1.0000]
 Remarks:

CU AND LUMINAIRE BUDGETARY ESTIMATE DIAGRAM

Test:U:120.0V I:0.1674A P:19.98W PF:0.9943 Lamp Flux:2540.65x1 lm		
NAME: Direct Linear Ambient Luminaires	TYPE:N/A	WEIGHT:N/A
SPEC.:N/A	DIM.: N/A	SERIAL No.:N/A
MFR.: OKT	SUR.:N/A	Shielding Angle:N/A

pcc	80%			70%			50%			30%			10%			0
	50%	30%	10%	50%	30%	10%	50%	30%	10%	50%	30%	10%	50%	30%	10%	0
pw																
pfc	20%			20%			20%			20%			20%			0
RCR	RCR:Room Cavity Ratio															
	Coefficients of Utilization(CU)															
0.0	1.18	1.18	1.18	1.14	1.14	1.14	1.08	1.08	1.08	1.02	1.02	1.02	.97	.97	.97	.94
1.0	1.01	.96	.92	.98	.94	.90	.93	.89	.86	.88	.85	.83	.83	.81	.79	.77
2.0	.87	.80	.74	.85	.78	.73	.80	.75	.70	.76	.72	.68	.72	.69	.65	.63
3.0	.76	.68	.61	.74	.66	.60	.70	.64	.58	.67	.61	.56	.63	.59	.55	.52
4.0	.67	.58	.51	.66	.57	.51	.62	.55	.49	.59	.53	.48	.56	.51	.47	.44
5.0	.60	.51	.44	.58	.50	.43	.56	.48	.42	.53	.46	.41	.50	.45	.40	.38
6.0	.54	.45	.38	.52	.44	.38	.50	.42	.37	.48	.41	.36	.46	.40	.35	.33
7.0	.49	.40	.33	.47	.39	.33	.45	.38	.32	.43	.37	.32	.42	.36	.31	.29
8.0	.44	.36	.30	.43	.35	.29	.41	.34	.29	.40	.33	.28	.38	.32	.28	.26
9.0	.40	.32	.26	.40	.32	.26	.38	.31	.26	.37	.30	.25	.35	.29	.25	.23
10.0	.37	.29	.24	.37	.29	.24	.35	.28	.23	.34	.27	.23	.33	.27	.23	.21



C Range: 0 - 360DEG
 C Interval: 22.5DEG
 Test Speed: 10.0deg/s
 Temperature:25.2DEG
 Operators:ben
 Test Date:2017-11-06

γ Range: 0 - 180DEG
 γ Interval: 1.0DEG
 Test System:EVERFINE GO-R5000_V2 SYSTEM V2.0.351
 Humidity:45%
 Test Distance:2.447m [K=1.0000]
 Remarks:

WEC AND CCEC

Test:U:120.0V I:0.1674A P:19.98W PF:0.9943 Lamp Flux:2540.65x1 lm		
NAME: Direct Linear Ambient Luminaires	TYPE:N/A	WEIGHT:N/A
SPEC.:N/A	DIM.: N/A	SERIAL No.:N/A
MFR.: OKT	SUR.:N/A	Shielding Angle:N/A

ρcc	80%			70%			50%			30%			10%			0
ρw	50%	30%	10%	50%	30%	10%	50%	30%	10%	50%	30%	10%	50%	30%	10%	0
ρfc	20%			20%			20%			20%			20%			0
RCR	RCR:Room Cavity Ratio						Wall Exitance Coefficients(WEC)									
0.0																
1.0	.335	.190	.060	.326	.186	.059	.309	.177	.057	.294	.169	.054	.280	.162	.052	
2.0	.307	.168	.052	.299	.165	.051	.284	.158	.049	.270	.151	.047	.257	.146	.046	
3.0	.280	.149	.045	.273	.146	.044	.260	.141	.043	.247	.136	.042	.236	.131	.040	
4.0	.256	.133	.039	.250	.131	.039	.238	.126	.038	.227	.122	.037	.217	.118	.036	
5.0	.236	.120	.035	.230	.118	.034	.219	.114	.034	.209	.110	.033	.200	.107	.032	
6.0	.218	.109	.031	.213	.107	.031	.203	.104	.030	.194	.101	.030	.185	.098	.029	
7.0	.202	.100	.028	.197	.098	.028	.189	.095	.027	.180	.092	.027	.173	.090	.026	
8.0	.188	.092	.026	.184	.091	.026	.176	.088	.025	.169	.085	.025	.162	.083	.024	
9.0	.176	.085	.024	.172	.084	.024	.165	.082	.023	.158	.079	.023	.152	.077	.022	
10.0	.165	.079	.022	.162	.078	.022	.155	.076	.021	.149	.074	.021	.143	.072	.021	

ρcc	80%			70%			50%			30%			10%			0
ρw	50%	30%	10%	50%	30%	10%	50%	30%	10%	50%	30%	10%	50%	30%	10%	0
ρfc	20%			20%			20%			20%			20%			0
RCR	RCR:Room Cavity Ratio						Ceiling Cavity Exitance Coefficients(CCEC)									
0.0	.236	.236	.236	.202	.202	.202	.138	.138	.138	.079	.079	.079	.025	.025	.025	
1.0	.228	.202	.178	.195	.173	.153	.133	.119	.106	.077	.069	.062	.025	.022	.020	
2.0	.220	.178	.142	.189	.153	.123	.129	.106	.086	.075	.062	.050	.024	.020	.016	
3.0	.213	.161	.119	.182	.139	.103	.125	.096	.072	.072	.056	.043	.023	.018	.014	
4.0	.205	.148	.104	.176	.128	.090	.121	.089	.063	.070	.052	.038	.023	.017	.012	
5.0	.198	.137	.093	.170	.119	.081	.117	.083	.057	.068	.049	.034	.022	.016	.011	
6.0	.190	.129	.085	.164	.112	.074	.113	.078	.053	.066	.046	.031	.021	.015	.010	
7.0	.184	.122	.080	.158	.106	.069	.109	.074	.049	.063	.044	.029	.020	.014	.010	
8.0	.177	.117	.075	.152	.101	.066	.105	.071	.047	.061	.042	.028	.020	.014	.009	
9.0	.171	.112	.072	.147	.097	.063	.102	.068	.045	.059	.040	.027	.019	.013	.009	
10.0	.165	.108	.069	.142	.093	.061	.099	.066	.043	.058	.039	.026	.019	.013	.009	

C Range: 0 - 360DEG
 C Interval: 22.5DEG
 Test Speed: 10.0deg/s
 Temperature:25.2DEG
 Operators:ben
 Test Date:2017-11-06

γ Range: 0 - 180DEG
 γ Interval: 1.0DEG
 Test System:EVERFINE GO-R5000_V2 SYSTEM V2.0.351
 Humidity:45%
 Test Distance:2.447m [K=1.0000]
 Remarks:

UGR(Unified Glare Rating) Table

Test:U:120.0V I:0.1674A P:19.98W PF:0.9943 Lamp Flux:2540.65x1 lm										
NAME: Direct Linear Ambient Luminaires					TYPE:N/A			WEIGHT:N/A		
SPEC.:N/A					DIM.: N/A			SERIAL No.:N/A		
MFR.: OKT					SUR.:N/A			Shielding Angle:N/A		
ceiling/cavity	0.7	0.7	0.5	0.5	0.3	0.7	0.7	0.5	0.5	0.3
walls	0.5	0.3	0.5	0.3	0.3	0.5	0.3	0.5	0.3	0.3
working plane	0.2	0.2	0.2	0.2	0.2	0.2	0.2	0.2	0.2	0.2
Room dimensions	Viewed crosswise					Viewed endwise				
x = 2H y = 2H	24.1	25.5	24.4	25.8	26.2	23.4	24.9	23.8	25.2	25.5
3H	25.7	27.1	26.1	27.4	27.8	25.0	26.4	25.4	26.7	27.1
4H	26.3	27.6	26.7	28.0	28.4	25.7	27.0	26.1	27.4	27.7
6H	26.8	28.0	27.2	28.4	28.8	26.4	27.6	26.8	28.0	28.4
8H	26.9	28.0	27.3	28.4	28.9	26.7	27.9	27.1	28.3	28.7
12H	26.9	28.0	27.3	28.4	28.9	27.0	28.2	27.5	28.6	29.0
4H 2H	24.6	25.9	25.0	26.3	26.7	24.1	25.4	24.5	25.8	26.2
3H	26.4	27.6	26.9	28.0	28.4	25.9	27.0	26.3	27.4	27.9
4H	27.2	28.3	27.7	28.7	29.1	26.7	27.8	27.2	28.2	28.6
6H	27.8	28.7	28.3	29.2	29.7	27.5	28.4	28.0	28.9	29.4
8H	27.9	28.8	28.4	29.3	29.8	27.9	28.8	28.4	29.3	29.8
12H	28.0	28.8	28.5	29.3	29.8	28.4	29.2	28.9	29.7	30.2
8H 4H	27.5	28.3	28.0	28.8	29.3	27.0	27.9	27.5	28.4	28.9
6H	28.2	28.9	28.7	29.4	30.0	28.1	28.8	28.6	29.3	29.8
8H	28.5	29.1	29.0	29.6	30.2	28.6	29.3	29.2	29.8	30.4
12H	28.6	29.2	29.2	29.7	30.4	29.2	29.8	29.8	30.3	30.9
12H 4H	27.5	28.3	28.0	28.8	29.3	27.1	27.9	27.6	28.4	28.9
6H	28.3	28.9	28.8	29.5	30.0	28.1	28.8	28.7	29.3	29.9
8H	28.6	29.2	29.2	29.7	30.3	28.8	29.3	29.3	29.9	30.5
Variations with the observer position at spacings:										
S = 1.0H	+ 0.1 / - 0.2					+ 0.1 / - 0.2				
1.5H	+ 0.2 / - 0.3					+ 0.2 / - 0.3				
2.0H	+ 0.2 / - 0.4					+ 0.1 / - 0.4				

CIE Pub.117 Corrected 2541 lm Total Lamp Luminous Flux.(8log(F/F0) = 3.2)

C Range: 0 - 360DEG
 C Interval: 22.5DEG
 Test Speed: 10.0deg/s
 Temperature:25.2DEG
 Operators:ben
 Test Date:2017-11-06

γ Range: 0 - 180DEG
 γ Interval: 1.0DEG
 Test System:EVERFINE GO-R5000_V2 SYSTEM V2.0.351
 Humidity:45%
 Test Distance:2.447m [K=1.0000]
 Remarks:

UTILIZATION FACTORS TABLE

Test:U:120.0V I:0.1674A P:19.98W PF:0.9943 Lamp Flux:2540.65x1 lm		
NAME: Direct Linear Ambient Luminaires	TYPE:N/A	WEIGHT:N/A
SPEC.:N/A	DIM.: N/A	SERIAL No.:N/A
MFR.: OKT	SUR.:N/A	Shielding Angle:N/A

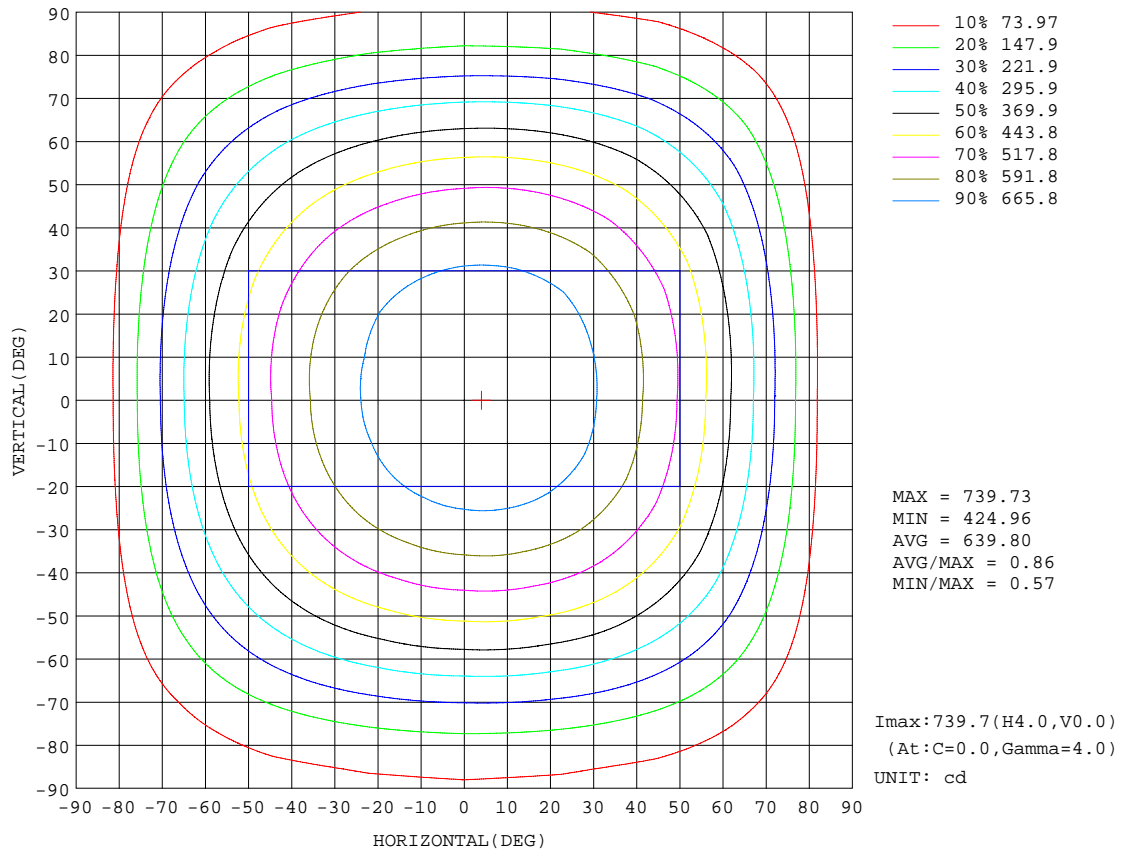
REFLECTANCE										
Ceiling	0.8	0.8	0.8	0.7	0.7	0.7	0.5	0.5	0.5	0
Walls	0.7	0.5	0.3	0.7	0.5	0.3	0.7	0.5	0.3	0
Working plane	0.2	0.2	0.2	0.2	0.2	0.2	0.2	0.2	0.2	0
ROOM INDEX	UTILIZATION FACTORS(PERCENT) $k(RI) \times RCR = 5$									
k = 0.60	54	42	35	53	41	35	51	41	34	28
0.80	64	51	44	62	51	44	60	50	43	36
1.00	72	60	52	70	59	52	68	60	51	43
1.25	79	68	60	77	67	60	74	65	58	50
1.50	84	73	66	82	72	65	78	70	64	55
2.00	91	82	75	89	80	74	85	77	72	62
2.50	95	87	80	93	85	79	88	82	76	67
3.00	99	91	85	96	89	84	91	86	81	71
4.00	103	97	91	100	95	90	95	90	86	76
5.00	106	100	96	103	98	94	97	93	90	79
ROOM INDEX	UF(total)									Direct
According to DIN EN 13032-2 2004			Suspended				SHRNOM = 1.25			

C Range: 0 - 360DEG
 C Interval: 22.5DEG
 Test Speed: 10.0deg/s
 Temperature:25.2DEG
 Operators:ben
 Test Date:2017-11-06

γ Range: 0 - 180DEG
 γ Interval: 1.0DEG
 Test System:EVERFINE GO-R5000_V2 SYSTEM V2.0.351
 Humidity:45%
 Test Distance:2.447m [K=1.0000]
 Remarks:

ISOCANDELA DIAGRAM

Test:U:120.0V I:0.1674A P:19.98W PF:0.9943 Lamp Flux:2540.65x1 lm		
NAME: Direct Linear Ambient Luminaires	TYPE:N/A	WEIGHT:N/A
SPEC.:N/A	DIM.: N/A	SERIAL No.:N/A
MFR.: OKT	SUR.:N/A	Shielding Angle:N/A



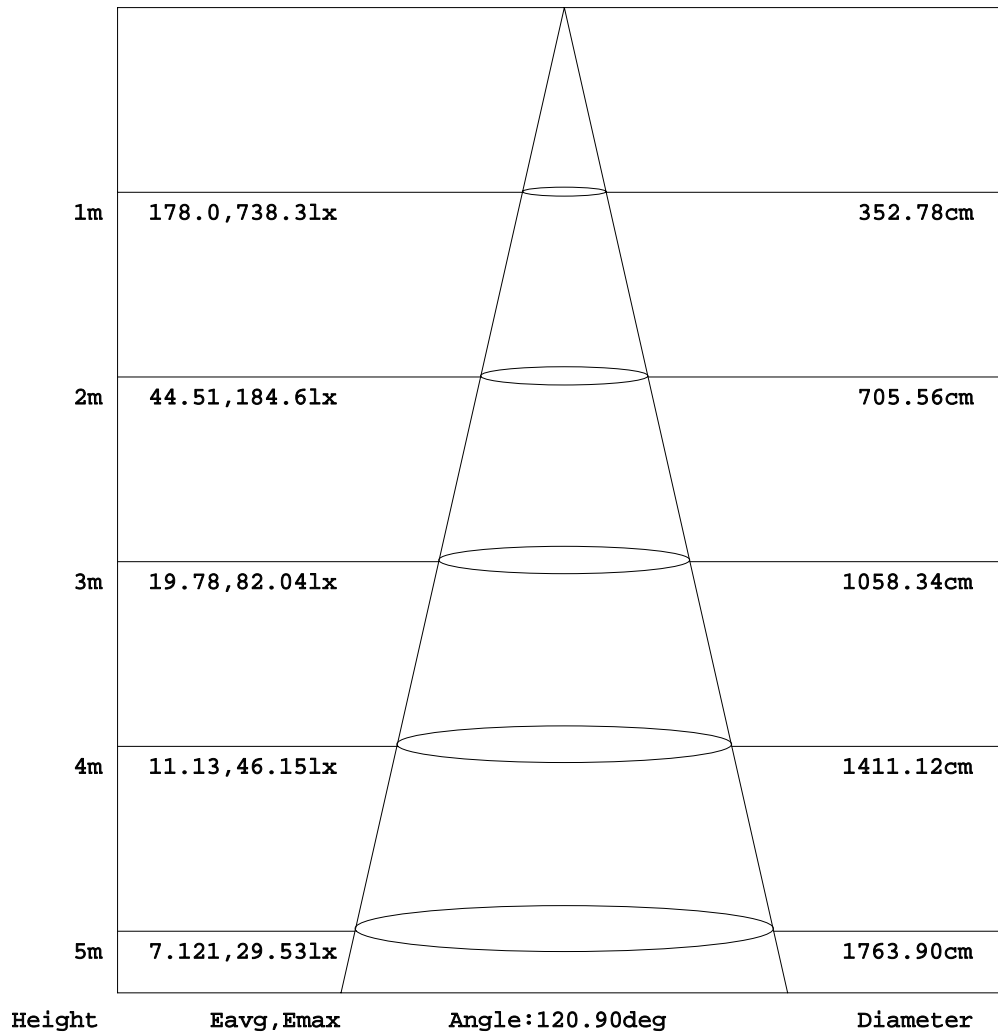
C Range: 0 - 360DEG
 C Interval: 22.5DEG
 Test Speed: 10.0deg/s
 Temperature: 25.2DEG
 Operators: ben
 Test Date: 2017-11-06

γ Range: 0 - 180DEG
 γ Interval: 1.0DEG
 Test System: EVERFINE GO-R5000_V2 SYSTEM V2.0.351
 Humidity: 45%
 Test Distance: 2.447m [K=1.0000]
 Remarks:

AAI Figure

Test:U:120.0V I:0.1674A P:19.98W PF:0.9943 Lamp Flux:2540.65x1 lm		
NAME: Direct Linear Ambient Luminaires	TYPE:N/A	WEIGHT:N/A
SPEC.:N/A	DIM.: N/A	SERIAL No.:N/A
MFR.: OKT	SUR.:N/A	Shielding Angle:N/A

Flux out:1820 lm



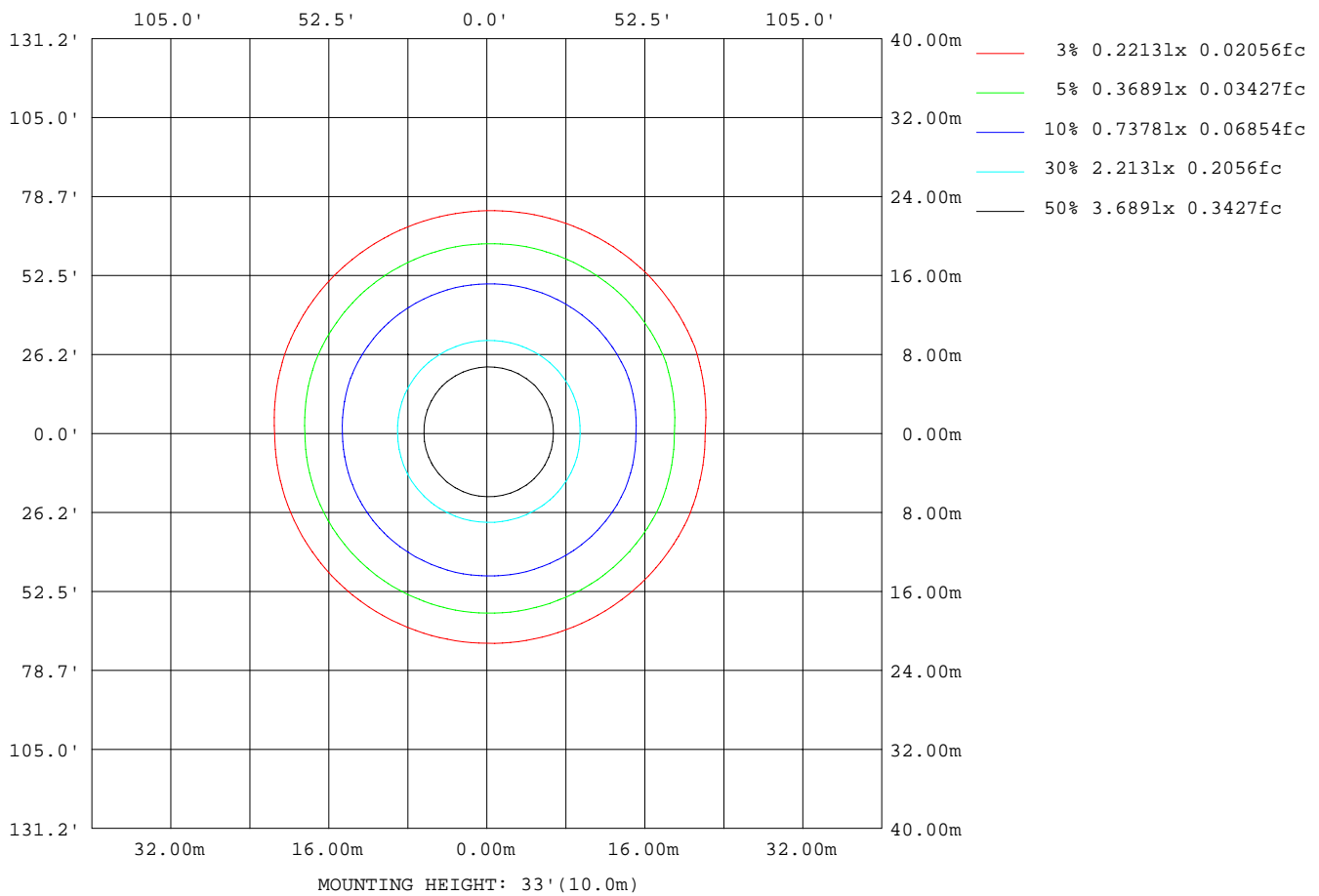
Note:The Curves indicate the illuminated area and the average illumination when the luminaire is at different distance.

C Range: 0 - 360DEG
 C Interval: 22.5DEG
 Test Speed: 10.0deg/s
 Temperature:25.2DEG
 Operators:ben
 Test Date:2017-11-06

γ Range: 0 - 180DEG
 γ Interval: 1.0DEG
 Test System:EVERFINE GO-R5000_V2 SYSTEM V2.0.351
 Humidity:45%
 Test Distance:2.447m [K=1.0000]
 Remarks:

ISOLUX DIAGRAM

Test:U:120.0V I:0.1674A P:19.98W PF:0.9943 Lamp Flux:2540.65x1 lm		
NAME: Direct Linear Ambient Luminaires	TYPE:N/A	WEIGHT:N/A
SPEC.:N/A	DIM.: N/A	SERIAL No.:N/A
MFR.: OKT	SUR.:N/A	Shielding Angle:N/A



C Range: 0 - 360DEG
 C Interval: 22.5DEG
 Test Speed: 10.0deg/s
 Temperature:25.2DEG
 Operators:ben
 Test Date:2017-11-06

γ Range: 0 - 180DEG
 γ Interval: 1.0DEG
 Test System:EVERFINE GO-R5000_V2 SYSTEM V2.0.351
 Humidity:45%
 Test Distance:2.447m [K=1.0000]
 Remarks:

LED Avg.L Report

Test:U:120.0V I:0.1674A P:19.98W PF:0.9943 Lamp Flux:2540.65x1 lm		
NAME: Direct Linear Ambient Luminaires	TYPE:N/A	WEIGHT:N/A
SPEC.:N/A	DIM.: N/A	SERIAL No.:N/A
MFR.: OKT	SUR.:N/A	Shielding Angle:N/A

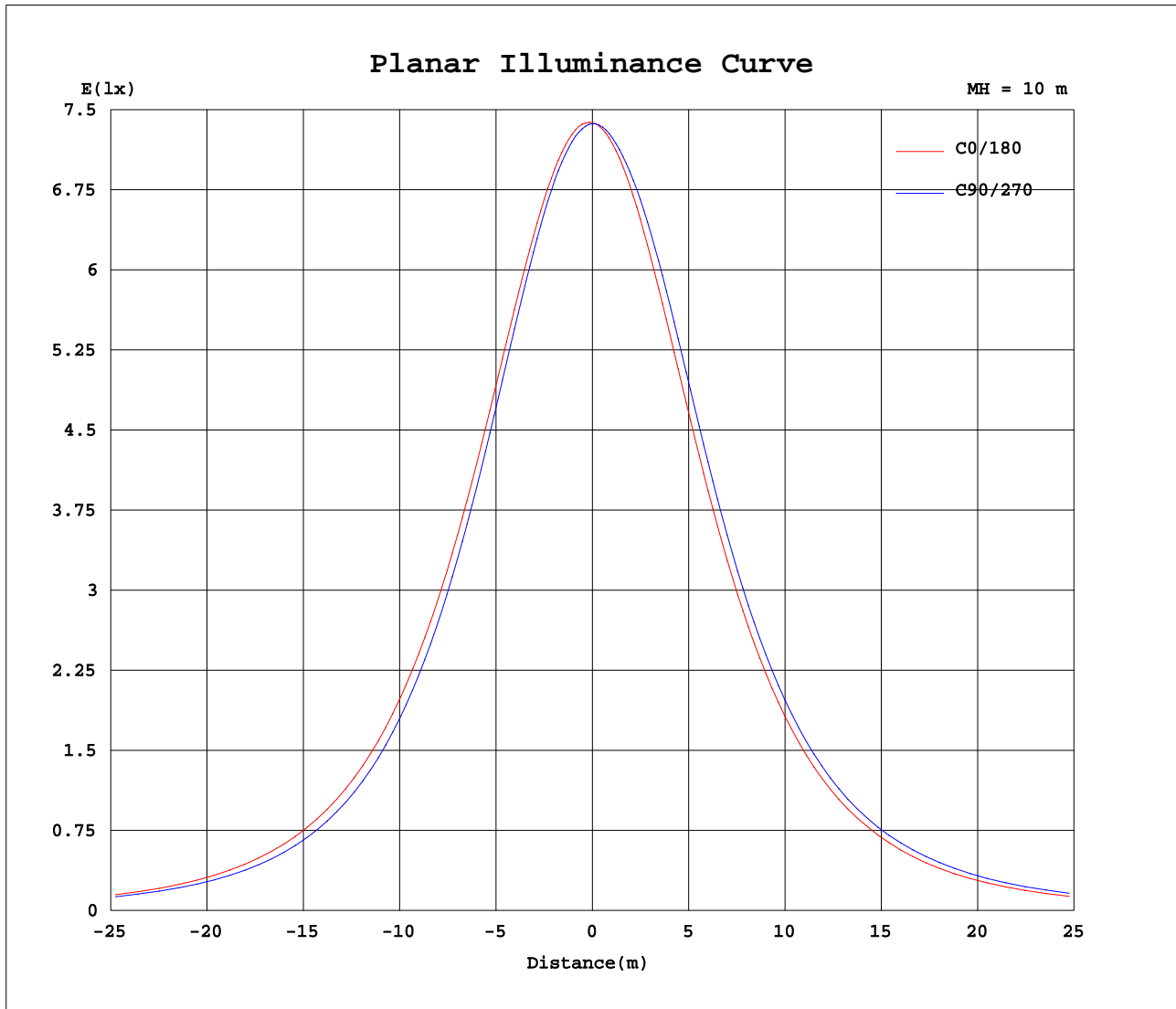
AvgL	cd/m2
L_0~180(65)av	24427
L_0~180(75)av	21532
L_0~180(85)av	13082
L_90~270(65)av	24817
L_90~270(75)av	25377
L_90~270(85)av	40530
L_45(65)av	25415
L_45(75)av	24810
L_45(85)av	32860

Standard: GB/T 29293-2012

C Range: 0 - 360DEG
 C Interval: 22.5DEG
 Test Speed: 10.0deg/s
 Temperature:25.2DEG
 Operators:ben
 Test Date:2017-11-06

γ Range: 0 - 180DEG
 γ Interval: 1.0DEG
 Test System:EVERFINE GO-R5000_V2 SYSTEM V2.0.351
 Humidity:45%
 Test Distance:2.447m [K=1.0000]
 Remarks:

Planar Illuminance Curve



C Range: 0 - 360DEG
 C Interval: 22.5DEG
 Test Speed: 10.0deg/s
 Temperature: 25.2DEG
 Operators: ben
 Test Date: 2017-11-06

γ Range: 0 - 180DEG
 γ Interval: 1.0DEG
 Test System: EVERFINE GO-R5000_V2 SYSTEM V2.0.351
 Humidity: 45%
 Test Distance: 2.447m [K=1.0000]
 Remarks:

LUMINOUS DISTRIBUTION INTENSITY DATA

Test:U:120.0V I:0.1674A P:19.98W PF:0.9943 Lamp Flux:2540.65x1 lm		
NAME: Direct Linear Ambient Luminaires	TYPE:N/A	WEIGHT:N/A
SPEC.:N/A	DIM.: N/A	SERIAL No.:N/A
MFR.: OKT	SUR.:N/A	Shielding Angle:N/A

Table--1

UNIT: cd

C(DEG) γ (DEG)	0	22.5	45	67.5	90	112.5	135	157.5	180	202.5	225	247.5	270	292.5	315	337.5			
0	737	737	737	737	737	737	737	737	737	737	737	737	737	737	737	737			
5	739	738	737	735	733	732	731	731	731	731	733	734	736	737	738	739			
10	735	734	731	729	725	723	720	719	720	721	724	729	732	735	735	735			
15	726	724	722	717	712	708	705	704	704	706	713	721	727	730	729	727			
20	713	710	706	700	693	688	686	684	684	688	699	709	717	721	720	715			
25	694	691	685	676	667	663	661	659	659	666	680	690	698	705	706	698			
30	669	667	659	646	636	631	631	630	630	639	654	664	672	681	685	677			
35	638	636	626	610	599	595	596	596	596	609	623	631	639	650	657	650			
40	602	600	587	569	556	552	555	558	557	573	586	592	601	613	623	618			
45	559	558	542	522	508	505	510	514	514	533	543	549	557	570	582	579			
50	510	510	491	470	457	455	460	466	466	487	496	501	510	522	535	534			
55	455	454	435	414	401	399	406	413	416	436	444	449	457	470	482	482			
60	393	393	374	355	344	342	348	355	357	381	391	396	404	416	426	425			
65	325	325	308	292	284	282	286	292	295	319	330	337	346	356	364	361			
70	252	252	241	230	224	222	223	226	228	253	267	276	285	293	297	289			
75	176	179	176	172	170	167	163	160	159	186	204	216	224	229	228	214			
80	99.8	108	118	125	126	122	110	96.8	91.4	119	143	159	169	170	161	139			
85	35.0	54.3	74.7	84.9	88.3	83.7	71.5	49.1	33.4	61.5	93.3	114	124	121	104	72.3			
90	5.68	25.1	47.6	61.3	65.8	60.7	46.1	23.1	3.81	26.7	55.7	75.4	83.7	79.4	61.6	30.5			
95	5.41	20.3	35.5	45.8	49.6	45.1	33.3	16.9	3.75	17.5	34.7	49.3	54.9	50.9	37.5	20.0			
100	5.27	19.9	33.5	40.6	42.4	38.7	30.2	16.6	3.86	17.4	30.8	39.4	43.6	41.1	33.7	19.9			
105	5.11	19.4	32.5	39.5	41.3	37.7	29.4	16.2	4.11	17.4	30.2	38.4	41.9	40.0	33.0	19.7			
110	3.90	18.7	31.2	38.1	39.9	36.5	28.5	15.8	4.24	17.3	29.5	37.4	40.8	38.8	32.0	19.2			
115	3.79	17.8	29.7	36.6	38.3	35.1	27.3	15.2	3.86	17.0	28.6	36.1	39.4	37.5	30.8	18.6			
120	3.91	16.7	28.2	34.8	36.5	33.4	26.0	14.6	4.46	16.6	27.6	34.7	37.8	35.9	29.4	17.8			
125	4.00	15.4	26.6	32.8	34.5	31.6	24.7	13.9	5.01	16.1	26.4	33.1	35.9	34.1	27.7	16.8			
130	4.12	14.4	24.9	30.6	32.3	29.6	23.1	13.1	5.50	15.5	25.0	31.2	33.9	32.1	26.0	15.4			
135	4.52	14.0	23.0	28.4	30.0	27.4	21.5	12.2	5.95	14.7	23.4	29.2	31.7	30.0	24.3	14.3			
140	4.98	12.5	20.9	26.0	27.5	25.2	19.7	11.5	6.31	13.5	21.6	27.0	29.3	27.8	22.7	13.8			
145	5.45	10.9	18.9	23.5	24.9	22.9	17.9	10.5	6.68	12.0	19.4	24.4	26.7	25.5	21.1	13.5			
150	5.73	9.40	16.8	20.9	22.2	20.3	16.1	9.02	6.77	10.1	16.9	21.6	24.0	23.3	19.6	13.3			
155	5.66	8.44	14.5	18.2	19.2	17.8	14.2	8.05	6.66	7.87	14.0	18.6	21.0	20.9	18.1	13.2			
160	5.57	7.19	11.9	15.3	16.3	15.2	11.6	6.40	6.38	7.41	9.47	15.5	17.8	18.1	16.4	12.6			
165	5.43	5.52	9.43	11.9	12.7	11.9	7.92	5.80	5.97	6.18	7.31	11.1	14.6	15.1	13.9	11.4			
170	5.74	5.11	6.55	8.84	9.24	8.02	6.05	5.87	6.10	6.13	6.55	7.38	10.7	11.8	11.2	9.72			
175	6.22	5.12	5.41	5.98	5.76	5.31	5.67	5.82	6.34	6.34	7.15	7.13	5.55	9.16	9.13	9.15			
180	6.70	6.37	5.71	5.09	3.29	5.57	5.96	6.16	6.69	6.70	6.58	6.15	5.32	3.67	5.85	6.10			

C Range: 0 - 360DEG
 C Interval: 22.5DEG
 Test Speed: 10.0deg/s
 Temperature:25.2DEG
 Operators:ben
 Test Date:2017-11-06

γ Range: 0 - 180DEG
 γ Interval: 1.0DEG
 Test System:EVERFINE GO-R5000_V2 SYSTEM V2.0.351
 Humidity:45%
 Test Distance:2.447m [K=1.0000]
 Remarks: