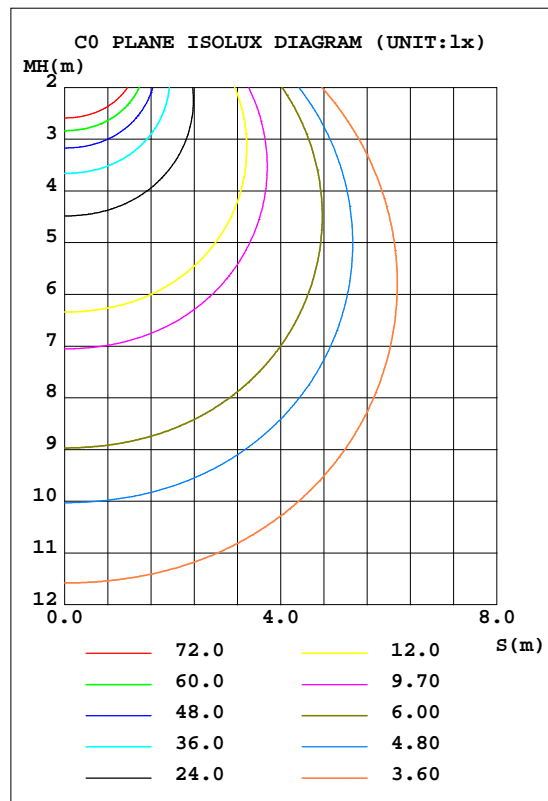
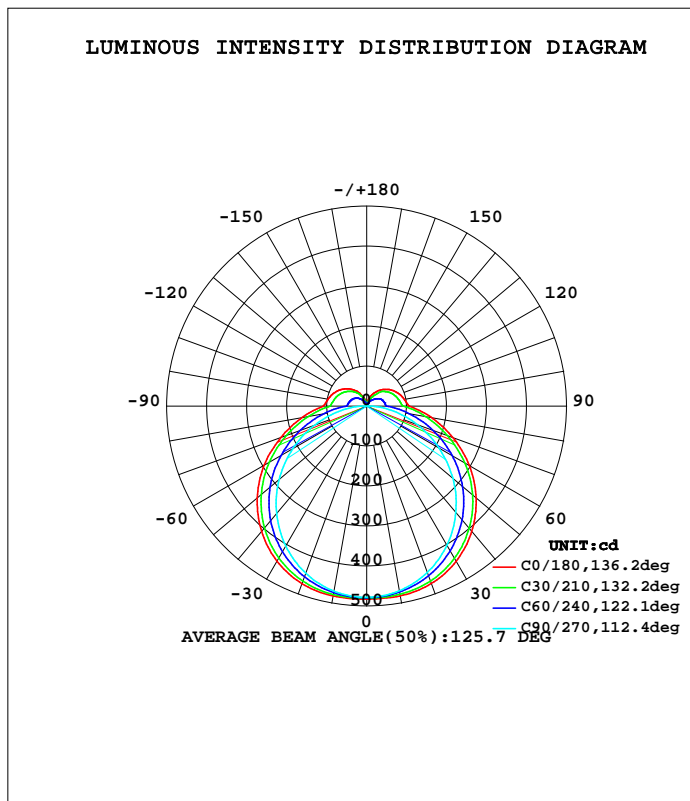


LUMINAIRE PHOTOMETRIC TEST REPORT

Test:U:120.2V I:0.1721A P:20.60W PF:0.9959 Lamp Flux:1938.78x1 lm		
NAME: ZE-21-I30DC	TYPE:LED	WEIGHT:
SPEC.:	DIM.: 640*33*63	SERIAL No.:1
MFR.: EVERFINE	SUR.:640*33*8	PROTECTION ANGLE:

DATA OF LAMP		PHOTOMETRIC DATA			
MODEL	ZE-21-I35DC	I _{max} (cd)	482.8	S/MH(C0/180)	1.38
NOMINAL POWER(W)	20	LOR(%)	100.0	S/MH(C90/270)	1.26
RATED VOLTAGE(V)	110-277	TOTAL FLUX(lm)	1938.8	η UP, DN(C0-180)	7.1,42.7
NOMINAL FLUX(lm)	1938.78	CIE CLASS	SEMI-D.	η UP, DN(C180-360)	7.1,43.1
LAMPS INSIDE	1	η up(%)	14.2	CIBSE SHR NOM	1.50
TEST VOLTAGE(V)	120	η down(%)	85.8	CIBSE SHR MAX	1.55



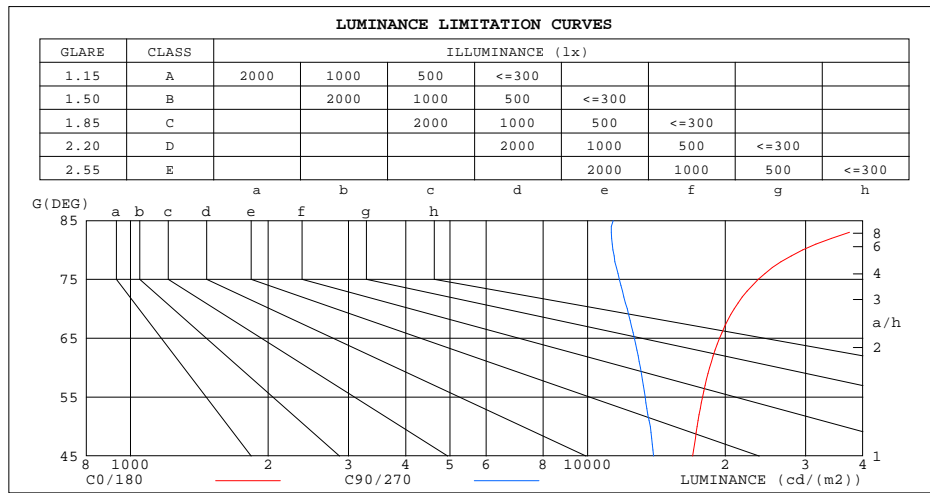
C Range: 0 - 360DEG
 C Interval: 10.0DEG
 Test Speed: HIGH
 Temperature:25.3DEG
 Operators:DAMIN
 Test Date:2020-09-15

γ Range: 0 - 180DEG
 γ Interval: 1.0DEG
 Test System:EVERFINE GO-2000B_V1 SYSTEM V2.0.291
 Humidity:65.0%
 Test Distance:8.190m [K=1.0000]
 Remarks:

ZONAL FLUX DIAGRAM
AND LUMINANCE LIMITATION CURVES

ZONAL FLUX DIAGRAM:

γ	C0	C45	C90	C135	C180	C225	C270	C315	γ	Φ zone	Φ total	$\$lum, lamp$
10	482.0	475.1	468.9	472.5	482.3	476.2	470.1	473.2	0- 10	45.50	45.50	2.35,2.35
20	472.4	459.3	442.9	455.9	472.8	460.5	445.1	458.4	10- 20	132.2	177.7	9.17,9.17
30	448.0	429.7	401.6	425.4	448.1	430.7	404.7	430.0	20- 30	204.8	382.5	19.7,19.7
40	409.0	386.6	347.1	381.2	409.1	387.0	350.7	387.7	30- 40	254.2	636.8	32.8,32.8
50	357.2	331.4	282.1	325.3	357.3	331.4	285.9	333.4	40- 50	274.2	911.0	47,47
60	295.8	266.4	208.7	259.9	296.0	266.2	213.6	269.9	50- 60	262.9	1174	60.5,60.5
70	229.0	197.6	133.7	191.2	228.0	196.6	137.1	200.0	60- 70	223.2	1397	72.1,72.1
80	164.3	130.2	63.12	124.6	163.6	129.2	65.80	132.4	70- 80	164.7	1562	80.6,80.6
90	106.8	73.54	4.275	72.60	109.0	74.08	4.206	75.06	80- 90	101.8	1664	85.8,85.8
100	96.33	66.61	1.470	66.90	98.80	67.55	1.484	64.25	90-100	68.54	1732	89.3,89.3
110	87.84	61.56	1.646	61.62	90.30	62.29	1.592	59.55	100-110	61.00	1793	92.5,92.5
120	77.72	54.37	1.716	54.50	80.00	55.28	1.704	51.65	110-120	51.78	1845	95.2,95.2
130	65.86	42.71	1.452	45.85	67.81	46.69	1.745	41.75	120-130	39.88	1885	97.2,97.2
140	52.61	29.71	1.502	36.09	54.18	36.90	1.751	29.75	130-140	27.57	1912	98.6,98.6
150	38.36	18.66	1.588	23.97	39.51	24.99	1.746	18.70	140-150	16.31	1929	99.5,99.5
160	23.54	9.589	1.655	13.61	22.47	14.13	1.696	9.565	150-160	7.562	1936	99.9,99.9
170	4.809	4.314	1.596	4.946	4.985	5.111	1.632	4.317	160-170	2.264	1939	100,100
180	1.362	1.357	1.375	1.391	1.366	1.357	1.375	1.396	170-180	0.2719	1939	100,100
DEG	LUMINOUS INTENSITY:cd									UNIT:lm		



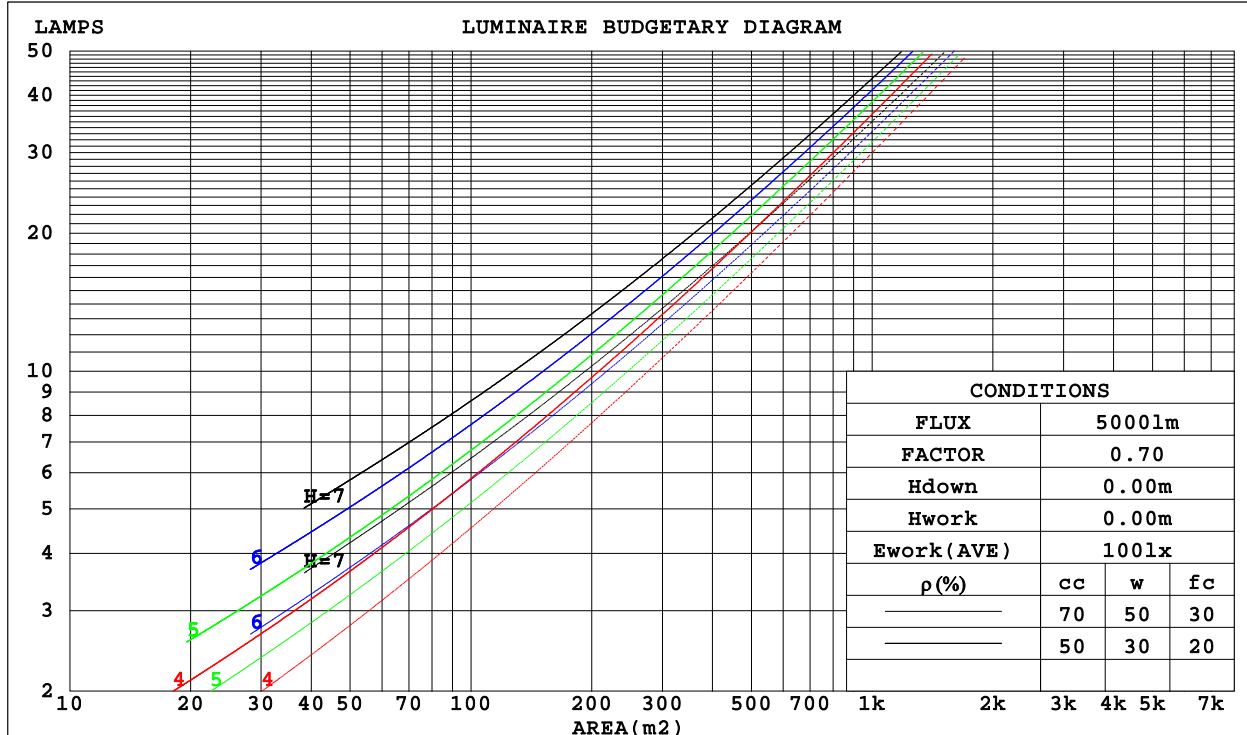
C Range: 0 - 360DEG
 C Interval: 10.0DEG
 Test Speed: HIGH
 Temperature:25.3DEG
 Operators:DAMIN
 Test Date:2020-09-15

γ Range: 0 - 180DEG
 γ Interval: 1.0DEG
 Test System:EVERFINE GO-2000B_V1 SYSTEM V2.0.291
 Humidity:65.0%
 Test Distance:8.190m [K=1.0000]
 Remarks:

CU AND LUMINAIRE BUDGETARY ESTIMATE DIAGRAM

Test:U:120.2V I:0.1721A P:20.60W PF:0.9959 Lamp Flux:1938.78x1 lm		
NAME: ZE-21-I30DC	TYPE:LED	WEIGHT:
SPEC.:	DIM.: 640*33*63	SERIAL No.:1
MFR.: EVERFINE	SUR.:640*33*8	PROTECTION ANGLE:

ρ_{cc}	80%			70%			50%			30%			10%			0
ρ_w	50%	30%	10%	50%	30%	10%	50%	30%	10%	50%	30%	10%	50%	30%	10%	0
ρ_{fc}	20%			20%			20%			20%			20%			0
RCR	RCR:Room Cavity Ratio						Coefficients of Utilization(CU)									
0.0	1.16	1.16	1.16	1.11	1.11	1.11	1.03	1.03	1.03	.96	.96	.96	.89	.89	.89	.86
1.0	.98	.93	.89	.94	.90	.86	.87	.84	.81	.81	.78	.76	.75	.73	.71	.68
2.0	.84	.77	.71	.81	.74	.69	.75	.70	.65	.70	.65	.61	.65	.61	.58	.55
3.0	.73	.65	.58	.71	.63	.56	.66	.59	.54	.61	.55	.51	.57	.52	.48	.45
4.0	.65	.55	.48	.62	.54	.47	.58	.51	.45	.54	.48	.43	.50	.45	.41	.38
5.0	.57	.48	.41	.55	.47	.40	.52	.44	.39	.48	.42	.37	.45	.40	.35	.33
6.0	.51	.42	.36	.50	.41	.35	.46	.39	.33	.43	.37	.32	.41	.35	.31	.28
7.0	.46	.38	.31	.45	.37	.31	.42	.35	.29	.39	.33	.28	.37	.31	.27	.25
8.0	.42	.34	.28	.41	.33	.27	.38	.31	.26	.36	.30	.25	.34	.28	.24	.22
9.0	.39	.30	.25	.37	.30	.24	.35	.28	.23	.33	.27	.23	.31	.26	.22	.20
10.0	.36	.28	.22	.35	.27	.22	.33	.26	.21	.31	.25	.20	.29	.24	.20	.18



C Range: 0 - 360DEG
 C Interval: 10.0DEG
 Test Speed: HIGH
 Temperature:25.3DEG
 Operators:DAMIN
 Test Date:2020-09-15

γ Range: 0 - 180DEG
 γ Interval: 1.0DEG
 Test System:EVERFINE GO-2000B_V1 SYSTEM V2.0.291
 Humidity:65.0%
 Test Distance:8.190m [K=1.0000]
 Remarks:

WEC AND CCEC

Test:U:120.2V I:0.1721A P:20.60W PF:0.9959 Lamp Flux:1938.78x1 lm		
NAME: ZE-21-I30DC	TYPE:LED	WEIGHT:
SPEC.:	DIM.: 640*33*63	SERIAL No.:1
MFR.: EVERFINE	SUR.:640*33*8	PROTECTION ANGLE:

pcc	80%			70%			50%			30%			10%			0
pw	50%	30%	10%	50%	30%	10%	50%	30%	10%	50%	30%	10%	50%	30%	10%	0
pfc	20%			20%			20%			20%			20%			0
RCR	RCR:Room Cavity Ratio						Wall Exitance Coefficients(WEC)									
0.0																
1.0	.356	.203	.064	.345	.197	.062	.323	.185	.059	.303	.175	.056	.285	.165	.053	
2.0	.317	.174	.053	.307	.169	.052	.288	.160	.050	.270	.151	.047	.253	.143	.045	
3.0	.286	.152	.046	.277	.148	.045	.259	.140	.043	.243	.133	.041	.228	.126	.039	
4.0	.260	.135	.040	.251	.132	.039	.235	.125	.037	.221	.119	.036	.207	.113	.034	
5.0	.237	.121	.035	.230	.118	.034	.216	.112	.033	.202	.107	.032	.190	.101	.030	
6.0	.219	.110	.031	.212	.107	.031	.199	.102	.030	.186	.097	.028	.175	.092	.027	
7.0	.202	.100	.028	.196	.098	.028	.184	.093	.027	.173	.089	.026	.162	.084	.025	
8.0	.188	.092	.026	.182	.090	.025	.171	.086	.024	.161	.082	.024	.152	.078	.023	
9.0	.176	.085	.024	.170	.083	.023	.160	.079	.022	.151	.076	.022	.142	.072	.021	
10.0	.165	.079	.022	.160	.077	.022	.150	.074	.021	.142	.070	.020	.134	.067	.019	

pcc	80%			70%			50%			30%			10%			0
pw	50%	30%	10%	50%	30%	10%	50%	30%	10%	50%	30%	10%	50%	30%	10%	0
pfc	20%			20%			20%			20%			20%			0
RCR	RCR:Room Cavity Ratio						Ceiling Cavity Exitance Coefficients(CCEC)									
0.0	.299	.299	.299	.255	.255	.255	.174	.174	.174	.100	.100	.100	.032	.032	.032	
1.0	.293	.265	.240	.250	.227	.206	.171	.156	.143	.099	.090	.083	.032	.029	.027	
2.0	.285	.242	.205	.244	.208	.177	.168	.144	.123	.097	.084	.072	.031	.027	.024	
3.0	.278	.225	.182	.238	.194	.158	.164	.135	.111	.094	.079	.065	.030	.026	.021	
4.0	.270	.212	.168	.232	.183	.146	.159	.128	.103	.092	.075	.061	.030	.024	.020	
5.0	.263	.202	.157	.226	.175	.137	.155	.122	.097	.090	.072	.057	.029	.023	.019	
6.0	.255	.194	.150	.220	.168	.131	.151	.118	.092	.088	.069	.055	.028	.023	.018	
7.0	.249	.187	.145	.214	.162	.126	.148	.114	.089	.086	.067	.053	.028	.022	.018	
8.0	.242	.182	.140	.208	.158	.122	.144	.111	.087	.084	.065	.052	.027	.021	.017	
9.0	.236	.177	.137	.203	.154	.120	.141	.108	.085	.082	.064	.051	.027	.021	.017	
10.0	.230	.173	.135	.198	.150	.118	.138	.106	.084	.080	.062	.050	.026	.021	.017	

C Range: 0 - 360DEG
 C Interval: 10.0DEG
 Test Speed: HIGH
 Temperature:25.3DEG
 Operators:DAMIN
 Test Date:2020-09-15

γ Range: 0 - 180DEG
 γ Interval: 1.0DEG
 Test System:EVERFINE GO-2000B_V1 SYSTEM V2.0.291
 Humidity:65.0%
 Test Distance:8.190m [K=1.0000]
 Remarks:

UGR(Unified Glare Rating) Table

Test:U:120.2V I:0.1721A P:20.60W PF:0.9959 Lamp Flux:1938.78x1 lm										
NAME: ZE-21-I30DC					TYPE:LED			WEIGHT:		
SPEC.:					DIM.: 640*33*63			SERIAL No.:1		
MFR.: EVERFINE					SUR.:640*33*8			PROTECTION ANGLE:		
ceiling/cavity	0.7	0.7	0.5	0.5	0.3	0.7	0.7	0.5	0.5	0.3
walls	0.5	0.3	0.5	0.3	0.3	0.5	0.3	0.5	0.3	0.3
working plane	0.2	0.2	0.2	0.2	0.2	0.2	0.2	0.2	0.2	0.2
Room dimensions	Viewed crosswise					Viewed endwise				
x = 2H y = 2H	22.4	23.7	22.8	24.2	24.7	21.0	22.3	21.4	22.8	23.3
3H	24.5	25.8	25.0	26.3	26.8	22.5	23.8	23.0	24.2	24.8
4H	25.7	26.9	26.2	27.4	27.9	23.1	24.3	23.6	24.8	25.4
6H	26.8	28.0	27.4	28.5	29.1	23.6	24.8	24.1	25.3	25.8
8H	27.5	28.6	28.0	29.1	29.7	23.8	24.9	24.3	25.4	26.0
12H	28.2	29.2	28.7	29.8	30.4	23.9	25.0	24.5	25.5	26.1
4H 2H	22.9	24.1	23.4	24.6	25.2	21.9	23.1	22.4	23.6	24.2
3H	25.3	26.4	25.9	26.9	27.5	23.7	24.7	24.2	25.3	25.9
4H	26.6	27.6	27.2	28.2	28.8	24.5	25.4	25.0	26.0	26.6
6H	28.0	28.9	28.6	29.5	30.1	25.1	26.0	25.7	26.6	27.2
8H	28.8	29.6	29.4	30.2	30.9	25.4	26.2	26.0	26.8	27.5
12H	29.6	30.3	30.2	31.0	31.7	25.6	26.3	26.2	26.9	27.6
8H 4H	27.0	27.8	27.6	28.4	29.0	25.2	26.0	25.8	26.6	27.3
6H	28.6	29.3	29.2	29.9	30.6	26.1	26.8	26.8	27.4	28.2
8H	29.5	30.2	30.2	30.8	31.5	26.5	27.2	27.2	27.8	28.6
12H	30.6	31.1	31.3	31.8	32.6	26.9	27.4	27.6	28.1	28.9
12H 4H	27.0	27.7	27.6	28.3	29.0	25.3	26.1	26.0	26.7	27.4
6H	28.7	29.3	29.4	30.0	30.7	26.5	27.1	27.1	27.7	28.5
8H	29.7	30.3	30.4	30.9	31.7	27.0	27.5	27.7	28.2	29.0
Variations with the observer position at spacings:										
S = 1.0H	+ 0.1 / - 0.1					+ 0.1 / - 0.1				
1.5H	+ 0.2 / - 0.3					+ 0.2 / - 0.3				
2.0H	+ 0.2 / - 0.4					+ 0.2 / - 0.4				

CIE Pub.117 Corrected 1939 lm Total Lamp Luminous Flux.(8log(F/F0) = 2.3)

C Range: 0 - 360DEG
 C Interval: 10.0DEG
 Test Speed: HIGH
 Temperature:25.3DEG
 Operators:DAMIN
 Test Date:2020-09-15

γ Range: 0 - 180DEG
 γ Interval: 1.0DEG
 Test System:EVERFINE GO-2000B_V1 SYSTEM V2.0.291
 Humidity:65.0%
 Test Distance:8.190m [K=1.0000]
 Remarks:

UTILIZATION FACTORS TABLE

Test:U:120.2V I:0.1721A P:20.60W PF:0.9959 Lamp Flux:1938.78x1 lm		
NAME: ZE-21-I30DC	TYPE:LED	WEIGHT:
SPEC.:	DIM.: 640*33*63	SERIAL No.:1
MFR.: EVERFINE	SUR.:640*33*8	PROTECTION ANGLE:

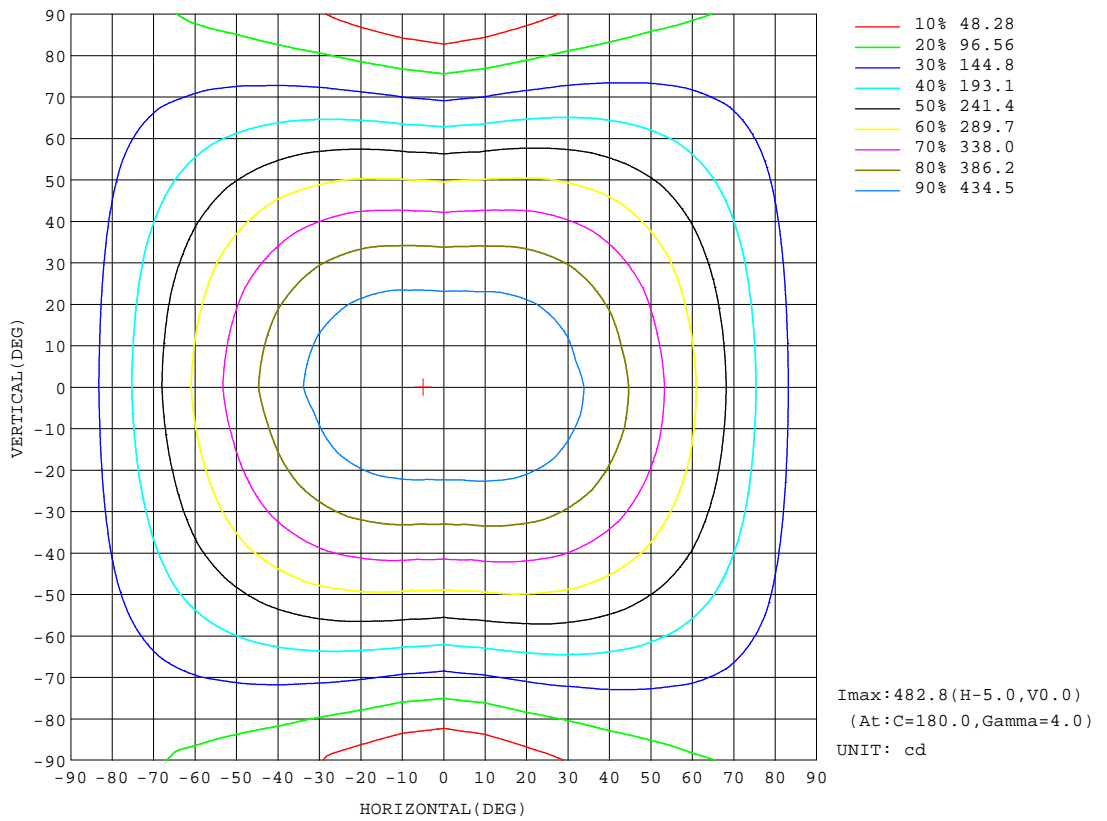
REFLECTANCE										
Ceiling	0.8	0.8	0.8	0.7	0.7	0.7	0.5	0.5	0.5	0
Walls	0.7	0.5	0.3	0.7	0.5	0.3	0.7	0.5	0.3	0
Working plane	0.2	0.2	0.2	0.2	0.2	0.2	0.2	0.2	0.2	0
ROOM INDEX	UTILIZATION FACTORS(PERCENT) k(RI) x RCR = 5									
k = 0.60	50	38	31	49	38	31	47	37	30	24
0.80	60	47	39	58	46	39	56	45	38	31
1.00	68	55	47	66	54	47	63	55	46	37
1.25	75	63	55	73	62	54	69	59	52	43
1.50	80	68	60	77	67	59	73	64	57	48
2.00	87	77	69	84	75	68	79	71	65	54
2.50	91	82	75	88	80	73	82	76	70	58
3.00	95	87	80	92	84	78	86	79	74	62
4.00	100	92	86	96	90	84	89	84	80	67
5.00	102	96	91	99	93	88	92	87	83	70
ROOM INDEX	UF(total)									Direct
According to DIN EN 13032-2 2004			Suspended				SHRNOM = 1.25			

C Range: 0 - 360DEG
 C Interval: 10.0DEG
 Test Speed: HIGH
 Temperature:25.3DEG
 Operators:DAMIN
 Test Date:2020-09-15

γ Range: 0 - 180DEG
 γ Interval: 1.0DEG
 Test System:EVERFINE GO-2000B_V1 SYSTEM V2.0.291
 Humidity:65.0%
 Test Distance:8.190m [K=1.0000]
 Remarks:

ISOCANDELA DIAGRAM

Test:U:120.2V I:0.1721A P:20.60W PF:0.9959 Lamp Flux:1938.78x1 lm		
NAME: ZE-21-I30DC	TYPE:LED	WEIGHT:
SPEC.:	DIM.: 640*33*63	SERIAL No.:1
MFR.: EVERFINE	SUR.:640*33*8	PROTECTION ANGLE:



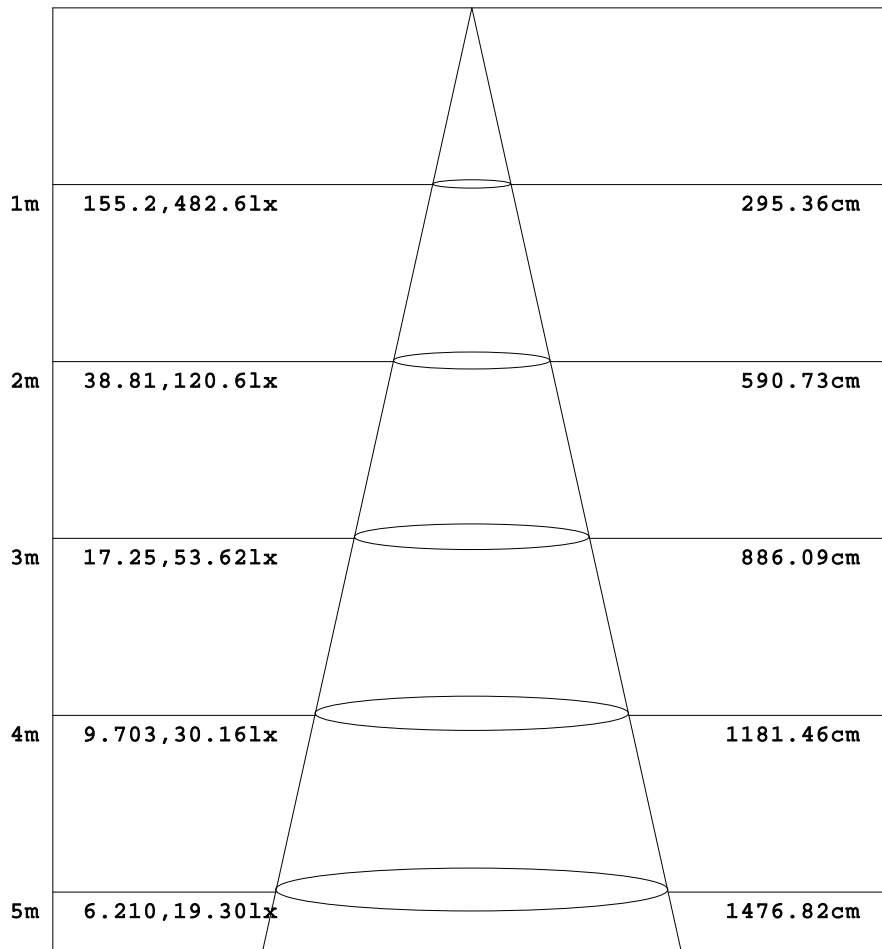
C Range: 0 - 360DEG
 C Interval: 10.0DEG
 Test Speed: HIGH
 Temperature:25.3DEG
 Operators:DAMIN
 Test Date:2020-09-15

γ Range: 0 - 180DEG
 γ Interval: 1.0DEG
 Test System:EVERFINE GO-2000B_V1 SYSTEM V2.0.291
 Humidity:65.0%
 Test Distance:8.190m [K=1.0000]
 Remarks:

AAI Figure

Test:U:120.2V I:0.1721A P:20.60W PF:0.9959 Lamp Flux:1938.78x1 lm		
NAME: ZE-21-I30DC	TYPE:LED	WEIGHT:
SPEC.:	DIM.: 640*33*63	SERIAL No.:1
MFR.: EVERFINE	SUR.:640*33*8	PROTECTION ANGLE:

Flux out:1072 lm



Height Eavg, Emax Angle:111.79deg Diameter

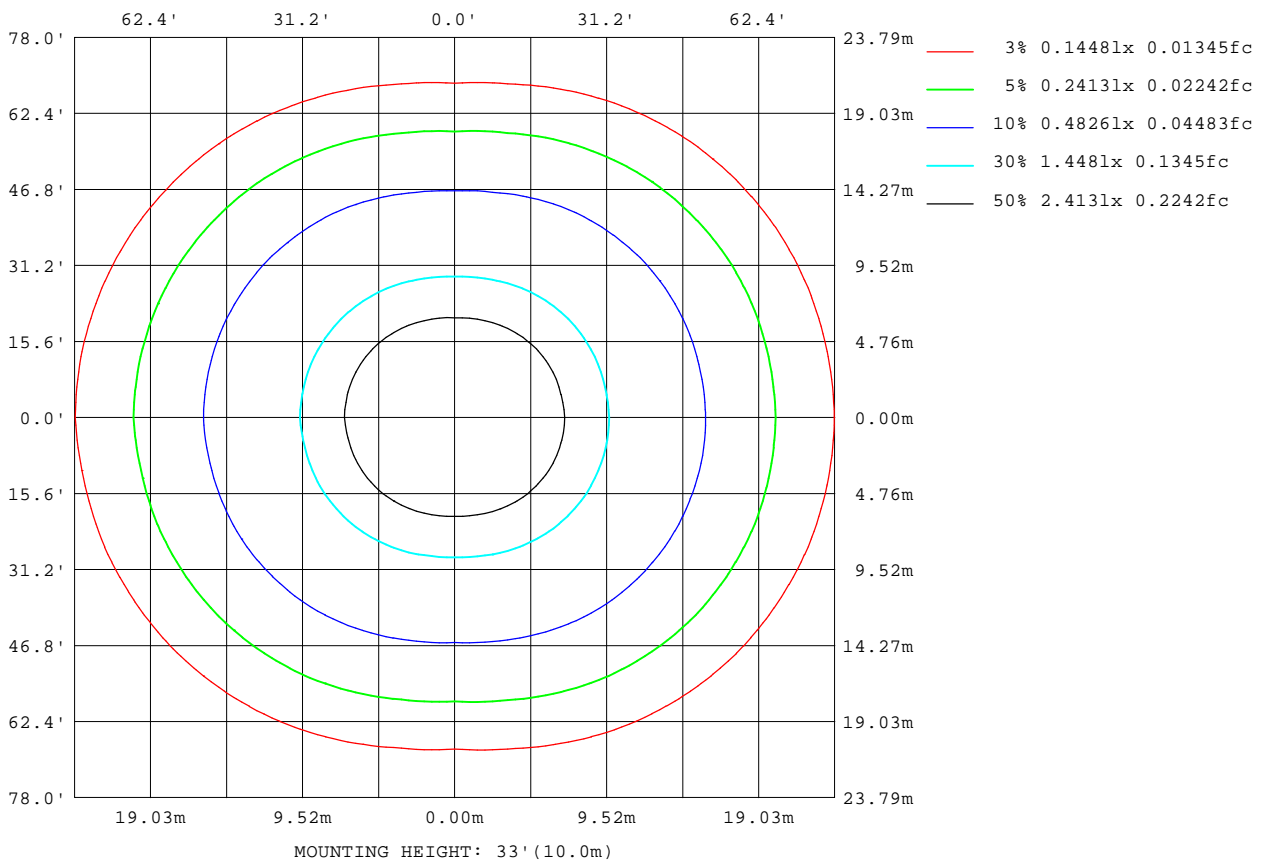
Note:The Curves indicate the illuminated area and the average illumination when the luminaire is at different distance.

C Range: 0 - 360DEG
 C Interval: 10.0DEG
 Test Speed: HIGH
 Temperature:25.3DEG
 Operators:DAMIN
 Test Date:2020-09-15

γ Range: 0 - 180DEG
 γ Interval: 1.0DEG
 Test System:EVERFINE GO-2000B_V1 SYSTEM V2.0.291
 Humidity:65.0%
 Test Distance:8.190m [K=1.0000]
 Remarks:

ISOLUX DIAGRAM

Test:U:120.2V I:0.1721A P:20.60W PF:0.9959 Lamp Flux:1938.78x1 lm		
NAME: ZE-21-I30DC	TYPE:LED	WEIGHT:
SPEC.:	DIM.: 640*33*63	SERIAL No.:1
MFR.: EVERFINE	SUR.:640*33*8	PROTECTION ANGLE:



C Range: 0 - 360DEG
C Interval: 10.0DEG
Test Speed: HIGH
Temperature:25.3DEG
Operators:DAMIN
Test Date:2020-09-15

γ Range: 0 - 180DEG
γ Interval: 1.0DEG
Test System:EVERFINE GO-2000B_V1 SYSTEM V2.0.291
Humidity:65.0%
Test Distance:8.190m [K=1.0000]
Remarks:

LED Avg.L Report

Test:U:120.2V I:0.1721A P:20.60W PF:0.9959 Lamp Flux:1938.78x1 lm		
NAME: ZE-21-I30DC	TYPE:LED	WEIGHT:
SPEC.:	DIM.: 640*33*63	SERIAL No.:1
MFR.: EVERFINE	SUR.:640*33*8	PROTECTION ANGLE:

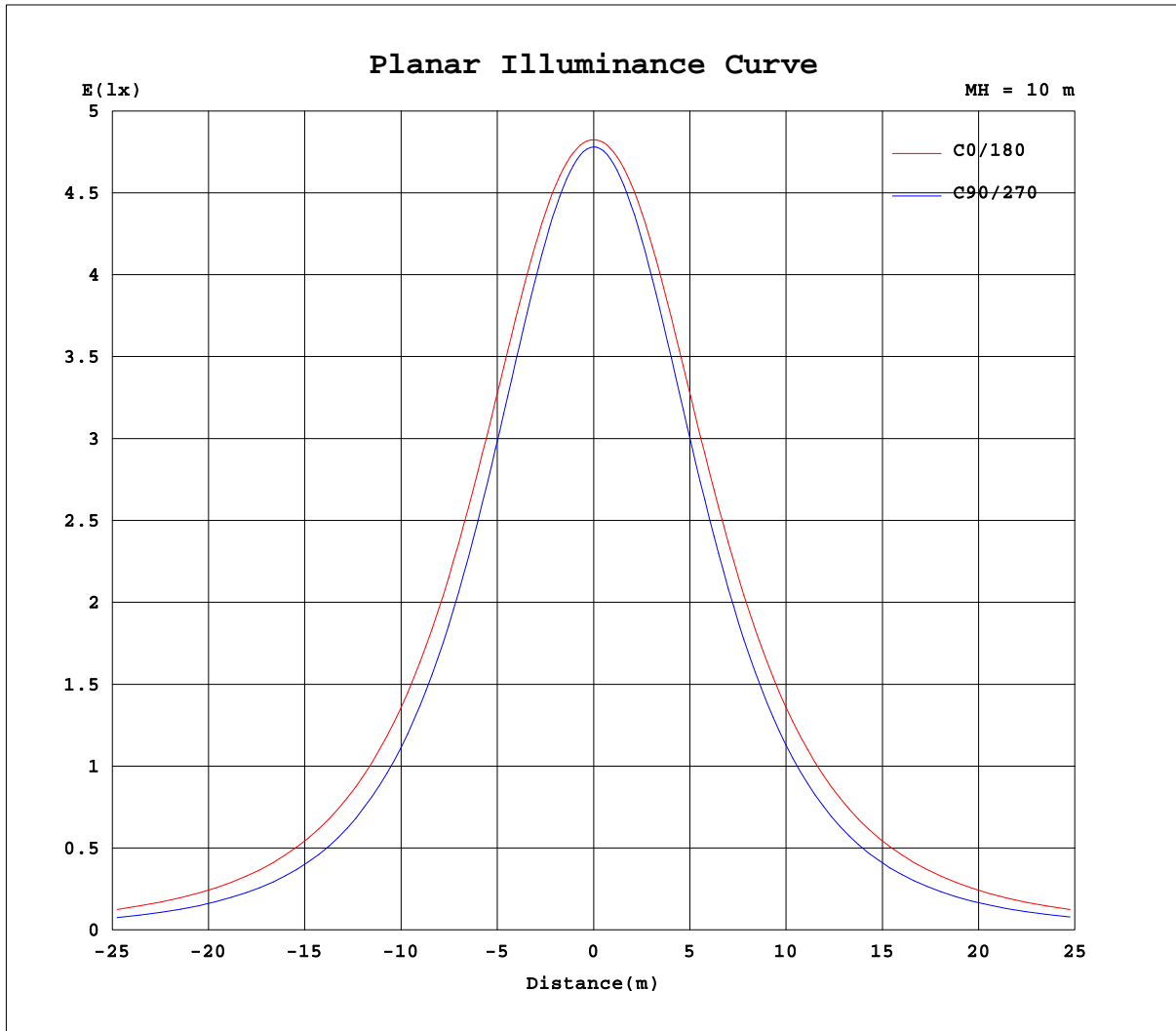
AvgL	cd/m2
L_0~180(65)av	19385
L_0~180(75)av	23574
L_0~180(85)av	48120
L_90~270(65)av	12830
L_90~270(75)av	11923
L_90~270(85)av	11757
L_45(65)av	17097
L_45(75)av	19615
L_45(85)av	35784

Standard: GB/T 29293-2012

C Range: 0 - 360DEG
 C Interval: 10.0DEG
 Test Speed: HIGH
 Temperature:25.3DEG
 Operators:DAMIN
 Test Date:2020-09-15

γ Range: 0 - 180DEG
 γ Interval: 1.0DEG
 Test System:EVERFINE GO-2000B_V1 SYSTEM V2.0.291
 Humidity:65.0%
 Test Distance:8.190m [K=1.0000]
 Remarks:

Planar Illuminance Curve



C Range: 0 - 360DEG
 C Interval: 10.0DEG
 Test Speed: HIGH
 Temperature: 25.3DEG
 Operators: DAMIN
 Test Date: 2020-09-15

γ Range: 0 - 180DEG
 γ Interval: 1.0DEG
 Test System: EVERFINE GO-2000B_V1 SYSTEM V2.0.291
 Humidity: 65.0%
 Test Distance: 8.190m [K=1.0000]
 Remarks:

LUMINOUS DISTRIBUTION INTENSITY DATA

Test:U:120.2V I:0.1721A P:20.60W PF:0.9959 Lamp Flux:1938.78x1 lm		
NAME: ZE-21-I30DC	TYPE:LED	WEIGHT:
SPEC.:	DIM.: 640*33*63	SERIAL No.:1
MFR.: EVERFINE	SUR.:640*33*8	PROTECTION ANGLE:

Table--1

UNIT: cd

C(DEG) γ (DEG)	0	10	20	30	40	50	60	70	80	90	100	110	120	130	140	150	160	170	180
0	483	482	481	481	480	480	479	479	479	478	478	478	477	477	477	477	477	477	483
5	483	482	481	480	479	478	477	477	476	476	475	476	476	476	476	476	477	477	483
10	482	481	479	478	476	474	472	471	469	469	469	470	471	472	473	474	475	476	482
15	479	478	476	473	470	467	464	461	458	458	458	460	462	465	467	469	471	472	479
20	472	471	469	466	461	457	452	448	444	443	443	447	450	454	458	461	464	466	473
25	462	461	458	455	449	444	437	431	425	424	425	430	434	440	445	449	452	455	462
30	448	447	443	439	433	426	418	411	404	402	403	409	415	423	428	434	437	441	448
35	430	429	425	421	413	406	396	387	379	376	378	385	393	402	408	415	419	423	430
40	409	408	404	399	391	382	371	361	351	347	350	359	368	378	385	392	397	401	409
45	384	384	379	374	365	356	343	332	320	316	319	330	339	350	359	367	372	377	385
50	357	356	352	346	336	326	313	300	287	282	286	298	309	321	330	339	345	350	357
55	328	327	322	316	305	295	281	266	253	245	252	263	276	289	299	308	315	320	328
60	296	295	290	283	273	260	247	231	217	209	215	228	242	254	266	277	283	288	296
65	263	260	256	248	239	226	212	195	180	171	178	192	207	220	232	241	250	254	261
70	229	227	222	214	204	191	176	159	142	134	141	156	171	185	197	208	216	221	228
75	196	193	189	181	170	157	140	124	106	97.1	104	120	135	151	164	174	183	188	195
80	164	162	157	149	137	124	107	90.4	72.3	63.1	70.7	87.2	103	118	131	143	152	157	164
85	134	133	127	119	107	93.9	76.9	59.8	41.6	31.7	39.9	56.8	72.8	89.0	102	114	122	129	135
90	107	106	100	92.3	80.3	66.8	50.2	32.8	15.1	4.28	15.0	32.5	49.8	65.8	79.4	90.9	99.2	105	109
95	101	99.1	94.1	86.4	75.5	62.5	47.4	30.9	14.6	4.36	14.5	31.0	47.5	62.7	75.6	86.4	94.2	99.3	103
100	96.3	95.0	90.3	83.0	72.8	60.4	46.1	30.3	14.5	1.47	14.2	30.2	46.2	60.7	73.1	83.3	90.6	95.3	98.8
105	92.2	91.0	86.6	79.8	70.1	58.4	44.7	29.6	14.3	1.56	13.7	29.2	44.6	58.6	70.4	80.1	87.0	91.5	94.8
110	87.8	86.7	82.6	76.3	67.1	56.0	43.0	28.5	13.9	1.65	13.1	27.9	42.6	56.0	67.2	76.5	83.0	87.2	90.3
115	83.0	82.0	78.2	72.3	63.6	53.2	40.7	27.1	13.0	1.70	11.0	26.3	40.3	53.0	63.6	72.3	78.6	82.4	85.4
120	77.7	76.9	73.3	67.8	59.7	49.0	37.6	24.8	11.5	1.72	9.88	24.4	37.5	49.5	59.5	67.7	73.6	77.2	80.0
125	72.0	71.2	68.0	62.9	55.4	43.1	32.9	21.7	9.19	1.59	8.21	20.0	34.5	45.7	55.0	62.6	68.0	71.4	74.1
130	65.9	65.2	62.3	57.6	47.8	37.6	28.2	18.4	7.53	1.45	5.82	18.5	31.2	41.6	50.2	57.2	62.2	65.2	67.8
135	59.4	58.9	56.3	51.5	39.0	32.0	23.6	15.3	6.37	1.48	4.84	15.8	25.9	37.2	45.0	51.4	55.9	58.7	61.2
140	52.6	52.2	49.9	41.2	33.1	26.3	19.5	12.4	5.38	1.50	4.16	13.4	22.7	32.5	39.6	45.4	49.5	51.9	54.2
145	45.6	45.3	40.7	32.6	26.5	21.2	15.7	9.40	4.49	1.52	3.64	11.1	18.8	25.9	33.9	39.2	42.8	44.9	47.0
150	38.4	38.2	30.5	25.1	20.7	16.6	12.2	7.43	3.75	1.59	3.02	8.37	15.0	21.4	26.6	31.5	35.8	37.7	39.5
155	31.0	29.0	21.9	18.7	15.5	12.6	8.77	5.77	3.13	1.63	2.47	6.33	11.7	16.8	21.0	25.2	27.2	28.4	29.4
160	23.5	18.1	14.8	13.0	10.6	8.57	6.45	4.44	2.70	1.65	2.15	4.63	8.06	12.2	15.0	18.5	20.2	21.5	22.5
165	15.2	8.97	8.16	7.83	6.90	5.90	4.95	3.60	2.37	1.65	1.87	3.24	5.35	7.83	10.1	12.0	13.0	13.8	13.7
170	4.81	4.87	4.72	4.55	4.45	4.17	3.49	2.65	2.03	1.60	1.67	2.16	3.19	4.41	5.49	6.53	7.16	7.62	4.98
175	2.33	2.36	2.30	2.39	2.42	2.25	2.07	1.79	1.59	1.46	1.49	1.50	1.72	2.00	2.33	2.59	2.71	2.61	2.37
180	1.36	1.36	1.35	1.35	1.36	1.36	1.37	1.36	1.37	1.38	1.38	1.37	1.38	1.38	1.40	1.40	1.40	1.40	1.37

C Range: 0 - 360DEG
 C Interval: 10.0DEG
 Test Speed: HIGH
 Temperature:25.3DEG
 Operators:DAMIN
 Test Date:2020-09-15

γ Range: 0 - 180DEG
 γ Interval: 1.0DEG
 Test System:EVERFINE GO-2000B_V1 SYSTEM V2.0.291
 Humidity:65.0%
 Test Distance:8.190m [K=1.0000]
 Remarks:

LUMINOUS DISTRIBUTION INTENSITY DATA

Test:U:120.2V I:0.1721A P:20.60W PF:0.9959 Lamp Flux:1938.78x1 lm		
NAME: ZE-21-I30DC	TYPE:LED	WEIGHT:
SPEC.:	DIM.: 640*33*63	SERIAL No.:1
MFR.: EVERFINE	SUR.:640*33*8	PROTECTION ANGLE:

Table--2

UNIT: cd

C(DEG) γ (DEG)	190	200	210	220	230	240	250	260	270	280	290	300	310	320	330	340	350		
0	482	481	481	480	480	479	479	479	478	478	478	477	477	477	477	477	477		
5	482	481	480	480	479	478	477	477	476	476	476	476	476	476	476	477	477		
10	481	480	479	477	475	474	472	471	470	470	470	472	473	474	475	476	476		
15	478	476	474	472	469	466	463	461	460	460	461	464	466	469	471	472	473		
20	471	469	466	463	458	454	450	447	445	446	448	453	456	460	463	466	467		
25	460	458	454	450	445	439	433	429	427	429	432	438	443	449	452	455	456		
30	446	444	439	434	427	421	413	408	405	408	412	420	427	433	438	441	443		
35	428	425	420	415	407	399	390	383	379	383	389	399	407	414	420	424	425		
40	406	404	398	391	383	374	363	356	351	355	363	374	383	392	398	403	404		
45	382	379	372	366	356	346	334	325	320	325	335	347	357	367	373	379	380		
50	355	351	344	337	326	316	303	292	286	292	303	317	328	339	345	351	353		
55	325	321	314	306	294	283	269	256	250	256	270	285	297	308	316	322	324		
60	293	289	281	272	260	247	234	220	214	220	235	249	264	276	283	290	293		
65	260	254	247	237	226	212	197	183	176	184	199	215	229	240	250	256	260		
70	226	221	213	203	191	176	161	146	137	147	163	179	194	206	216	222	227		
75	193	187	179	169	156	141	124	110	100	110	126	144	159	172	182	189	193		
80	162	156	147	136	122	108	90.6	75.2	65.8	76.2	92.7	111	126	139	150	157	162		
85	132	127	117	107	92.3	77.3	59.5	43.9	33.9	44.9	61.6	79.9	95.3	110	120	128	131		
90	107	101	92.5	81.2	66.9	51.0	33.0	15.6	4.21	16.4	33.9	52.4	67.9	82.2	92.6	101	105		
95	101	95.9	87.6	76.7	63.2	47.9	30.9	14.1	3.81	13.8	30.2	46.8	61.8	75.0	85.4	93.3	97.8		
100	96.8	92.1	84.3	74.0	61.1	46.4	30.2	13.9	1.48	13.8	29.6	45.4	59.6	68.9	82.1	89.5	93.6		
105	92.8	88.5	81.0	71.3	59.0	44.9	29.2	13.4	1.54	13.3	27.7	42.6	56.4	68.0	72.0	85.8	89.7		
110	88.5	84.5	77.4	68.2	56.4	43.0	27.9	12.9	1.59	12.9	26.9	41.0	53.9	65.2	73.8	78.4	85.5		
115	83.7	79.9	73.2	64.6	53.4	40.7	26.3	11.8	1.65	12.1	25.9	39.0	51.1	61.7	70.1	76.1	80.9		
120	78.3	74.9	68.6	60.6	50.0	38.1	24.6	10.5	1.70	11.0	24.5	36.5	46.6	56.7	65.6	71.3	71.5		
125	72.6	69.4	63.6	56.0	46.2	35.1	22.0	8.44	1.72	8.50	21.3	32.5	41.3	52.2	60.4	66.0	63.1		
130	66.4	63.5	58.2	51.2	42.2	31.9	19.5	6.84	1.75	6.89	18.0	28.1	37.3	46.2	53.8	59.9	63.0		
135	59.8	57.3	52.4	46.1	37.8	27.6	16.9	5.77	1.75	5.91	14.9	23.6	31.8	38.7	48.7	52.3	56.7		
140	52.9	50.8	46.3	40.6	33.2	24.0	13.9	4.76	1.75	5.05	12.0	19.5	26.2	33.3	38.5	46.6	49.7		
145	45.8	44.0	40.0	35.0	27.0	19.8	11.0	3.90	1.75	4.22	8.97	15.6	21.2	26.7	32.3	40.2	41.6		
150	38.5	37.0	31.9	27.9	22.1	16.0	8.51	3.18	1.75	3.52	7.21	12.2	16.5	20.9	25.0	29.6	34.2		
155	28.9	28.3	25.3	21.9	17.5	11.7	6.43	2.65	1.72	2.93	5.64	8.62	12.4	15.6	18.6	22.3	28.4		
160	21.8	21.0	19.3	16.2	12.0	8.34	4.63	2.19	1.70	2.49	4.29	6.43	8.36	10.8	13.0	15.0	17.9		
165	14.5	13.6	12.2	10.5	7.93	5.53	3.22	1.87	1.66	2.24	3.52	4.85	5.85	7.02	7.73	8.16	8.75		
170	7.85	7.62	6.66	5.77	4.45	3.26	2.19	1.64	1.63	1.96	2.69	3.51	4.19	4.44	4.56	4.85	4.89		
175	2.84	2.94	2.71	2.44	2.03	1.68	1.51	1.43	1.45	1.52	1.82	2.07	2.34	2.49	2.45	2.37	2.39		
180	1.36	1.34	1.35	1.35	1.36	1.37	1.37	1.37	1.38	1.38	1.39	1.38	1.40	1.39	1.40	1.39	1.39		

C Range: 0 - 360DEG
 C Interval: 10.0DEG
 Test Speed: HIGH
 Temperature:25.3DEG
 Operators:DAMIN
 Test Date:2020-09-15

γ Range: 0 - 180DEG
 γ Interval: 1.0DEG
 Test System:EVERFINE GO-2000B_V1 SYSTEM V2.0.291
 Humidity:65.0%
 Test Distance:8.190m [K=1.0000]
 Remarks:

Photometric Data Table [cd]

G/C	0.0	10.0	20.0	30.0	40.0	50.0	60.0	70.0	80.0	90.0
0.0	482.6	481.7	481.1	480.5	480.1	479.7	479.4	479.0	478.6	478.2
3.0	482.6	481.7	481.0	480.3	479.6	479.1	478.5	478.1	477.5	477.2
6.0	482.6	481.6	480.6	479.6	478.6	477.6	476.5	475.8	474.9	474.7
9.0	482.2	481.2	479.9	478.4	476.8	475.1	473.5	472.2	470.9	470.6
12.0	481.2	480.1	478.3	476.5	474.1	471.8	469.2	467.3	465.5	465.1
15.0	478.9	477.8	475.7	473.4	470.3	467.2	463.7	460.9	458.4	457.9
18.0	475.5	474.3	472.0	469.2	465.4	461.5	457.0	453.4	450.2	449.4
21.0	470.7	469.5	466.8	463.7	459.2	454.6	449.0	444.5	440.4	439.4
24.0	464.5	463.3	460.3	457.0	451.7	446.5	439.9	434.4	429.4	428.1
27.0	457.0	455.8	452.6	448.8	443.0	437.0	429.6	423.1	417.1	415.5
30.0	448.0	446.9	443.5	439.3	433.0	426.4	418.0	410.7	403.6	401.6
33.0	437.6	436.7	432.7	428.7	421.6	414.5	405.3	396.9	388.8	386.5
36.0	426.3	425.3	421.1	416.7	409.3	401.5	391.3	382.1	373.1	370.3
39.0	413.5	412.4	408.3	403.5	395.6	387.2	376.4	366.3	356.3	353.0
42.0	399.6	398.6	394.0	389.1	380.8	372.0	360.3	349.5	338.5	334.7
45.0	384.4	383.5	379.1	373.8	364.9	355.6	343.3	331.7	319.9	315.7
48.0	368.6	367.7	362.8	357.4	348.1	338.4	325.6	313.3	300.5	295.8
51.0	351.5	350.5	345.6	339.9	330.3	320.2	306.9	293.9	280.3	274.5
54.0	333.6	332.7	327.8	321.8	311.8	301.4	287.4	273.2	259.7	252.5
57.0	315.1	314.3	309.0	302.9	292.6	281.8	267.4	252.0	238.4	230.8
60.0	295.8	295.0	289.5	283.3	272.7	260.1	246.8	231.0	216.6	208.7
63.0	276.2	274.3	269.8	261.8	252.4	239.7	225.9	209.7	194.6	186.3
66.0	256.1	253.8	249.5	241.5	231.7	218.9	204.5	188.0	172.3	163.7
69.0	235.8	233.6	229.1	221.0	211.2	197.9	183.1	166.3	150.0	141.1
72.0	215.5	213.3	208.8	200.7	190.4	177.0	161.8	144.7	127.2	118.7
75.0	195.6	193.5	188.8	180.6	170.2	156.5	140.0	123.8	105.9	97.14
78.0	176.3	174.2	169.4	161.1	150.2	136.5	120.0	103.4	85.32	76.38
81.0	158.2	156.2	151.3	142.7	130.5	117.5	100.7	84.06	65.87	56.71
84.0	139.5	138.5	132.6	125.1	113.0	99.54	82.58	65.64	47.45	37.71
87.0	122.5	121.5	115.7	108.1	95.98	82.54	65.60	48.34	29.84	19.73
90.0	106.8	105.7	100.0	92.29	80.33	66.75	50.16	32.78	15.14	4.275
93.0	102.5	101.0	95.85	87.96	76.83	63.52	48.03	31.23	14.58	4.361
96.0	99.74	98.29	93.30	85.67	74.94	62.01	47.07	30.78	14.57	4.362
99.0	97.16	95.80	91.03	83.66	73.31	60.81	46.34	30.46	14.56	2.293
102.0	94.69	93.42	88.84	81.74	71.75	59.66	45.58	30.07	14.47	1.511
105.0	92.19	91.01	86.62	79.79	70.12	58.42	44.72	29.58	14.32	1.565
108.0	89.62	88.52	84.29	77.73	68.36	57.04	43.71	29.00	14.10	1.619
111.0	86.92	85.82	81.78	75.50	66.43	55.50	42.55	28.27	13.78	1.650
114.0	84.02	83.01	79.15	73.12	64.36	53.80	41.21	27.42	13.21	1.687
117.0	80.95	80.01	76.33	70.52	62.10	51.85	39.64	26.33	12.49	1.711
120.0	77.72	76.86	73.34	67.78	59.72	49.01	37.58	24.83	11.54	1.716
123.0	74.32	73.55	70.21	64.89	57.16	44.71	34.20	22.84	9.976	1.718
126.0	70.79	70.08	66.91	61.86	54.50	41.78	32.26	21.01	8.824	1.563
129.0	67.12	66.46	63.51	58.68	49.95	38.42	29.22	19.05	7.787	1.480
132.0	63.31	62.72	59.94	55.39	42.60	34.95	26.31	17.17	7.055	1.463
135.0	59.38	58.86	56.27	51.54	39.04	32.02	23.58	15.34	6.374	1.480
138.0	55.34	54.90	52.50	45.24	35.99	28.50	21.06	13.61	5.765	1.494
141.0	51.22	50.83	48.61	38.77	31.72	25.20	18.71	11.60	5.184	1.506
144.0	47.01	46.71	43.01	33.86	27.75	22.18	16.41	9.850	4.660	1.515
147.0	42.71	42.49	36.40	29.51	24.08	19.34	14.27	8.569	4.173	1.561
150.0	38.36	38.18	30.50	25.14	20.68	16.64	12.16	7.428	3.753	1.588
153.0	33.97	33.79	25.17	21.14	17.54	14.11	9.869	6.405	3.361	1.615
156.0	29.49	26.57	20.37	17.46	14.59	11.63	8.271	5.468	3.005	1.655
159.0	25.03	20.01	16.10	14.05	11.86	9.194	6.881	4.643	2.756	1.655
162.0	20.57	14.55	12.29	10.66	8.879	7.390	5.731	4.107	2.567	1.655
165.0	15.20	8.973	8.155	7.832	6.902	5.896	4.954	3.597	2.373	1.650
168.0	6.089	6.150	5.960	5.780	5.205	4.903	4.080	3.011	2.165	1.646
171.0	4.231	4.301	4.146	4.004	4.054	3.784	3.191	2.470	1.953	1.592
174.0	2.738	2.756	2.684	2.725	2.805	2.594	2.326	1.978	1.688	1.519
177.0	1.721	1.712	1.712	1.784	1.785	1.680	1.626	1.478	1.439	1.375
180.0	1.362	1.357	1.353	1.348	1.357	1.357	1.366	1.362	1.371	1.375
G/C	100.0	110.0	120.0	130.0	140.0	150.0	160.0	170.0	180.0	190.0
0.0	477.9	477.6	477.4	477.2	477.0	476.8	476.7	476.6	482.6	481.7
3.0	476.9	476.9	476.7	476.7	476.7	476.8	476.8	476.8	482.7	481.9
6.0	474.4	474.7	474.8	475.4	475.7	476.2	476.5	476.7	482.8	481.9
9.0	470.5	471.1	471.8	472.9	473.8	475.0	475.7	476.2	482.6	481.6
12.0	465.0	466.3	467.4	469.5	471.0	472.8	473.9	474.8	481.4	480.3
15.0	458.0	460.0	461.9	464.7	467.0	469.5	471.2	472.4	479.2	477.9
18.0	449.8	452.4	455.1	458.8	461.8	465.0	467.0	468.8	475.8	474.3
21.0	440.0	443.4	447.0	451.6	455.3	459.1	461.7	463.7	470.9	469.3
24.0	429.0	433.2	437.6	443.1	447.5	452.0	454.9	457.4	464.7	462.9
27.0	416.7	421.8	427.0	433.3	438.4	443.5	446.9	449.7	457.1	455.2
30.0	403.2	409.2	415.2	422.5	428.2	433.8	437.4	440.6	448.1	446.1

C Range: 0 - 360DEG
 C Interval: 10.0DEG
 Test Speed: HIGH
 Temperature: 25.3DEG
 Operators: DAMIN
 Test Date: 2020-09-15

γ Range: 0 - 180DEG
 γ Interval: 1.0DEG
 Test System: EVERFINE GO-2000B_V1 SYSTEM V2.0.291
 Humidity: 65.0%
 Test Distance: 8.190m [K=1.0000]
 Remarks:

Photometric Data Table [cd]

33.0	388.4	395.3	402.2	410.2	416.5	422.8	426.8	430.3	437.8	435.6
36.0	372.6	380.5	388.0	397.1	403.8	410.5	414.8	418.7	426.3	424.0
39.0	355.8	364.5	372.9	382.4	389.8	397.2	401.8	405.8	413.5	411.2
42.0	337.9	347.4	356.6	367.0	374.9	382.5	387.5	391.8	399.7	397.1
45.0	319.3	329.6	339.4	350.4	358.7	367.0	372.2	376.9	384.6	382.0
48.0	299.7	310.8	321.4	332.9	341.7	350.4	356.0	360.8	368.5	365.9
51.0	279.4	291.3	302.5	314.6	323.9	332.9	338.7	343.8	351.6	348.9
54.0	258.7	270.5	282.8	295.5	305.1	314.7	320.8	326.2	333.7	330.9
57.0	237.3	249.1	262.7	276.3	285.7	295.8	302.1	307.6	315.2	312.3
60.0	215.4	227.9	241.8	254.0	265.8	276.5	282.7	288.5	296.0	293.0
63.0	193.3	206.5	220.9	233.6	245.5	254.7	263.0	268.5	276.7	273.4
66.0	170.9	184.7	199.5	212.7	225.0	234.6	242.9	247.6	254.8	253.4
69.0	148.5	162.9	178.0	191.8	204.2	214.3	222.8	227.8	234.7	233.0
72.0	125.7	141.4	156.9	171.0	183.8	194.1	202.6	207.9	214.6	212.9
75.0	104.3	120.3	135.3	150.6	163.9	174.2	182.9	188.4	194.9	193.1
78.0	83.75	100.1	115.3	131.0	143.8	155.1	164.0	169.5	175.7	173.9
81.0	64.27	80.89	96.33	112.2	124.8	136.9	145.4	151.5	157.8	155.8
84.0	45.82	62.62	78.46	94.62	107.6	119.6	127.7	134.3	140.3	137.4
87.0	28.25	45.45	61.72	77.95	91.01	103.1	111.2	117.9	123.5	120.6
90.0	14.98	32.46	49.83	65.78	79.42	90.94	99.17	104.8	109.0	106.6
93.0	14.53	31.30	48.14	63.61	76.84	87.87	95.85	101.1	104.8	102.7
96.0	14.40	30.82	47.27	62.24	75.09	85.76	93.43	98.47	102.1	99.99
99.0	14.25	30.38	46.48	61.09	73.60	83.94	91.26	96.10	99.62	97.56
102.0	14.03	29.85	45.61	59.89	72.05	82.07	89.23	93.86	97.20	95.20
105.0	13.75	29.23	44.63	58.57	70.39	80.10	87.05	91.52	94.75	92.81
108.0	13.41	28.49	43.47	57.08	68.56	77.99	84.70	89.02	92.14	90.27
111.0	12.96	27.62	42.19	55.42	66.54	75.69	82.16	86.30	89.36	87.60
114.0	11.38	26.67	40.76	53.59	64.35	73.22	79.50	83.44	86.43	84.72
117.0	10.63	25.59	39.20	51.63	61.99	70.52	76.61	80.38	83.30	81.63
120.0	9.879	24.43	37.52	49.52	59.48	67.70	73.55	77.17	80.00	78.33
123.0	9.103	22.59	35.73	47.25	56.81	64.70	70.33	73.76	76.51	74.96
126.0	7.703	19.47	33.88	44.91	54.06	61.57	66.88	70.19	72.88	71.35
129.0	6.015	18.90	31.90	42.40	51.17	58.32	63.38	66.48	69.10	67.55
132.0	5.373	17.23	29.83	39.82	48.10	54.89	59.71	62.66	65.20	63.84
135.0	4.845	15.79	25.92	37.18	45.00	51.44	55.91	58.69	61.16	59.80
138.0	4.412	14.47	23.62	34.44	41.80	47.86	52.08	54.68	57.00	55.62
141.0	4.055	12.96	22.02	31.05	38.53	44.19	48.14	50.55	52.75	51.56
144.0	3.739	11.59	19.45	26.64	35.18	40.49	44.12	46.36	48.43	47.24
147.0	3.383	9.848	17.41	24.66	30.10	36.71	40.02	42.08	44.02	42.92
150.0	3.018	8.366	14.98	21.38	26.55	31.52	35.82	37.72	39.51	38.47
153.0	2.648	7.103	12.98	18.66	23.52	27.17	29.66	32.22	33.74	32.25
156.0	2.400	5.977	10.83	15.50	19.96	23.70	26.17	27.11	28.54	27.96
159.0	2.215	4.944	8.719	12.98	16.45	19.69	21.56	23.05	23.90	23.12
162.0	2.034	4.024	6.934	10.34	13.04	15.46	17.59	18.68	19.98	19.41
165.0	1.872	3.236	5.350	7.827	10.10	11.99	12.96	13.83	13.70	14.53
168.0	1.741	2.560	3.969	5.672	7.153	8.658	9.519	10.29	6.158	10.60
171.0	1.655	1.992	2.845	3.846	4.702	5.597	6.054	6.334	6.528	6.522
174.0	1.547	1.600	1.934	2.377	2.821	3.178	3.369	3.303	2.791	3.548
177.0	1.416	1.393	1.480	1.519	1.649	1.712	1.746	1.698	1.702	1.808
180.0	1.375	1.371	1.375	1.380	1.402	1.402	1.402	1.402	1.366	1.357
G/C	200.0	210.0	220.0	230.0	240.0	250.0	260.0	270.0	280.0	290.0
0.0	481.1	480.5	480.1	479.7	479.4	479.0	478.6	478.2	477.9	477.6
3.0	481.3	480.6	480.1	479.6	479.2	478.5	478.1	477.6	477.1	477.1
6.0	481.2	480.2	479.5	478.4	477.7	476.6	476.0	475.4	475.3	475.1
9.0	480.5	479.2	477.9	476.3	475.0	473.4	472.5	471.7	471.7	471.9
12.0	479.1	477.1	475.3	473.0	471.0	468.8	467.6	466.4	466.7	467.3
15.0	476.4	474.0	471.6	468.6	465.9	462.9	461.0	459.6	460.1	461.2
18.0	472.6	469.6	466.8	462.9	459.4	455.5	453.1	451.4	452.3	454.0
21.0	467.4	464.0	460.5	455.9	451.7	446.8	443.8	441.6	443.0	445.4
24.0	460.9	457.0	453.1	447.6	442.7	436.8	433.1	430.7	432.3	435.6
27.0	452.9	448.6	444.2	438.0	432.3	425.7	421.2	418.2	420.4	424.5
30.0	443.7	439.0	434.1	427.4	420.9	413.3	407.9	404.7	407.5	412.4
33.0	433.1	428.1	422.8	415.3	408.1	399.6	393.5	389.7	393.1	398.9
36.0	421.3	415.8	410.1	402.1	394.3	384.8	378.1	373.8	377.5	384.4
39.0	408.3	402.5	396.4	387.7	379.4	369.1	361.4	356.7	360.9	368.8
42.0	394.1	387.9	381.4	372.3	363.2	352.2	343.7	338.5	343.3	352.2
45.0	378.9	372.4	365.6	355.7	346.2	334.2	325.2	319.5	324.9	334.5
48.0	362.7	355.7	348.6	338.2	328.2	315.6	305.7	299.6	305.6	316.1
51.0	345.4	338.2	330.6	319.9	309.2	296.0	285.5	279.0	285.5	296.8
54.0	327.5	319.9	312.0	300.7	289.6	275.8	263.2	257.6	263.2	276.8
57.0	308.7	300.9	292.8	280.8	268.8	255.0	241.9	235.8	242.1	256.1
60.0	289.3	281.1	271.9	260.5	247.2	233.6	220.1	213.6	220.4	235.1
63.0	268.9	261.0	250.9	239.7	226.2	212.1	198.1	191.1	198.5	213.7
66.0	247.8	240.5	230.2	218.7	204.8	190.1	175.7	168.2	176.2	191.9

C Range: 0 - 360DEG
 C Interval: 10.0DEG
 Test Speed: HIGH
 Temperature: 25.3DEG
 Operators: DAMIN
 Test Date: 2020-09-15

γ Range: 0 - 180DEG
 γ Interval: 1.0DEG
 Test System: EVERFINE GO-2000B_V1 SYSTEM V2.0.291
 Humidity: 65.0%
 Test Distance: 8.190m [K=1.0000]
 Remarks:

Photometric Data Table [cd]

69.0	227.6	220.0	209.5	197.6	183.4	168.2	153.3	145.1	153.9	170.2
72.0	207.3	199.7	188.9	176.6	162.1	146.1	131.1	122.2	131.8	148.4
75.0	187.4	179.5	168.6	155.9	141.1	124.3	109.5	100.4	110.3	126.4
78.0	168.1	160.0	148.9	135.0	120.9	103.8	88.62	79.33	89.46	105.9
81.0	149.9	140.4	130.0	115.8	101.4	84.04	68.70	59.24	69.65	86.13
84.0	132.5	123.3	112.6	98.14	83.09	65.65	49.95	40.12	50.95	67.72
87.0	115.7	106.4	95.58	81.16	66.07	48.21	32.12	22.05	33.17	50.23
90.0	101.4	92.52	81.23	66.93	50.97	33.02	15.60	4.206	16.39	33.88
93.0	97.61	89.09	78.08	64.28	48.66	31.36	14.22	3.756	13.88	30.59
96.0	95.10	86.88	76.15	62.76	47.57	30.80	14.10	3.837	13.83	30.08
99.0	92.86	84.89	74.51	61.52	46.72	30.34	13.93	1.557	13.78	29.75
102.0	90.69	83.00	72.95	60.30	45.86	29.80	13.71	1.483	13.63	29.37
105.0	88.48	81.03	71.29	58.96	44.88	29.17	13.44	1.538	13.29	27.68
108.0	86.12	78.92	69.49	57.48	43.77	28.43	13.13	1.578	13.03	27.19
111.0	83.57	76.61	67.52	55.84	42.53	27.59	12.70	1.596	12.85	26.70
114.0	80.84	74.12	65.36	54.06	41.16	26.66	12.05	1.650	12.36	26.11
117.0	77.94	71.48	63.04	52.12	39.66	25.65	11.41	1.668	11.67	25.39
120.0	74.87	68.64	60.55	50.00	38.05	24.55	10.49	1.704	11.01	24.52
123.0	71.63	65.71	57.88	47.81	36.32	23.03	9.029	1.715	9.383	22.71
126.0	68.26	62.54	55.10	45.45	34.48	21.44	8.190	1.727	8.103	20.60
129.0	64.73	59.20	52.21	42.93	32.57	19.90	7.055	1.741	7.095	18.61
132.0	61.07	55.95	49.18	40.46	30.56	18.52	6.406	1.745	6.478	16.73
135.0	57.29	52.39	46.07	37.80	27.64	16.86	5.765	1.754	5.914	14.87
138.0	53.41	48.69	42.86	35.01	25.21	15.35	5.147	1.752	5.373	13.17
141.0	49.42	45.10	39.53	31.85	23.11	13.16	4.575	1.751	4.846	11.18
144.0	45.37	41.28	36.19	27.80	20.56	11.54	4.066	1.749	4.377	9.352
147.0	41.22	37.46	31.33	25.46	18.41	9.925	3.606	1.747	3.940	8.214
150.0	36.98	31.94	27.91	22.07	15.98	8.508	3.182	1.746	3.525	7.213
153.0	30.40	28.20	24.15	19.32	13.22	7.255	2.831	1.732	3.155	6.275
156.0	26.96	23.87	20.85	16.23	10.98	6.055	2.533	1.714	2.822	5.360
159.0	22.26	20.39	17.82	12.97	9.024	4.972	2.272	1.700	2.529	4.530
162.0	18.65	16.32	13.54	10.39	7.181	4.012	2.046	1.687	2.380	3.983
165.0	13.61	12.15	10.52	7.930	5.528	3.222	1.866	1.664	2.241	3.519
168.0	9.998	8.789	7.552	5.746	4.085	2.568	1.713	1.650	2.083	3.018
171.0	6.454	5.703	4.943	3.856	2.895	2.022	1.596	1.614	1.889	2.531
174.0	3.653	3.326	2.961	2.403	1.914	1.593	1.465	1.507	1.627	1.995
177.0	1.859	1.762	1.644	1.539	1.424	1.412	1.366	1.398	1.411	1.561
180.0	1.344	1.353	1.353	1.362	1.366	1.371	1.371	1.375	1.375	1.389
G/C	300.0	310.0	320.0	330.0	340.0	350.0				
0.0	477.4	477.2	477.0	476.8	476.7	476.6				
3.0	477.0	476.8	476.8	476.7	476.7	476.6				
6.0	475.4	475.6	476.0	476.3	476.5	476.5				
9.0	472.7	473.5	474.5	475.3	476.0	476.1				
12.0	468.8	470.4	472.2	473.5	474.6	475.1				
15.0	463.8	466.1	468.8	470.7	472.3	472.9				
18.0	457.5	460.7	464.2	466.7	468.7	469.5				
21.0	449.9	454.1	458.4	461.4	463.9	464.8				
24.0	441.2	446.2	451.3	454.8	457.7	458.7				
27.0	431.3	437.0	442.9	446.9	450.2	451.4				
30.0	420.0	426.7	433.3	437.6	441.4	442.6				
33.0	407.6	415.0	422.4	427.2	431.3	432.4				
36.0	394.1	402.2	410.1	415.4	419.8	421.2				
39.0	379.5	388.2	396.8	402.5	407.2	408.6				
42.0	363.7	373.3	382.3	388.3	393.4	395.0				
45.0	346.9	357.1	366.8	373.2	378.5	380.2				
48.0	329.4	339.9	350.3	356.9	362.6	364.4				
51.0	310.7	322.1	332.7	339.7	345.7	347.6				
54.0	291.5	303.1	314.4	321.7	328.1	330.0				
57.0	270.8	283.6	295.4	303.0	309.6	311.6				
60.0	249.5	263.6	276.3	283.4	290.4	292.5				
63.0	228.7	242.9	254.0	263.7	270.2	273.1				
66.0	207.5	222.0	233.5	243.4	249.3	253.4				
69.0	186.2	201.1	212.9	223.0	229.2	233.2				
72.0	164.9	180.1	192.2	202.5	209.0	213.1				
75.0	144.0	159.5	171.9	182.3	189.1	193.3				
78.0	123.7	138.4	152.1	162.7	169.7	174.1				
81.0	104.2	119.1	133.1	143.6	151.2	155.5				
84.0	85.78	101.1	115.3	125.4	133.7	137.2				
87.0	68.61	83.98	98.21	108.4	116.8	120.4				
90.0	52.41	67.88	82.24	92.61	101.0	104.7				
93.0	47.56	62.90	76.36	87.04	95.05	99.66				
96.0	46.43	61.35	74.34	84.72	92.50	96.89				
99.0	45.65	60.09	71.72	82.72	90.21	94.41				
102.0	44.81	57.43	68.86	80.82	88.02	92.03				

C Range: 0 - 360DEG
 C Interval: 10.0DEG
 Test Speed: HIGH
 Temperature: 25.3DEG
 Operators: DAMIN
 Test Date: 2020-09-15

γ Range: 0 - 180DEG
 γ Interval: 1.0DEG
 Test System: EVERFINE GO-2000B_V1 SYSTEM V2.0.291
 Humidity: 65.0%
 Test Distance: 8.190m [K=1.0000]
 Remarks:

Photometric Data Table [cd]

105.0	42.63	56.37	68.00	72.01	85.76	89.65
108.0	41.65	54.97	66.43	74.73	70.47	87.20
111.0	40.62	53.35	64.55	73.13	78.99	84.60
114.0	39.46	51.61	62.42	70.89	76.89	81.86
117.0	38.25	48.78	60.06	68.36	74.23	78.93
120.0	36.50	46.62	56.69	65.61	71.31	71.48
123.0	33.92	43.64	54.03	62.63	68.22	62.78
126.0	31.98	40.61	50.98	58.88	64.86	63.33
129.0	29.14	37.78	48.16	54.31	61.20	64.05
132.0	26.26	34.50	43.47	51.95	57.24	60.57
135.0	23.62	31.79	38.74	48.72	52.32	56.72
138.0	21.10	28.30	35.63	42.51	48.34	52.59
141.0	18.69	25.15	31.95	37.26	45.65	48.13
144.0	16.37	22.15	28.00	33.16	42.30	43.35
147.0	14.23	19.28	24.32	29.38	36.04	36.80
150.0	12.16	16.53	20.87	25.05	29.57	34.24
153.0	9.675	14.00	17.65	21.07	25.60	31.84
156.0	8.139	11.53	14.72	17.37	20.70	26.04
159.0	6.850	8.933	12.00	14.05	16.33	19.68
162.0	5.642	7.315	8.875	10.57	12.44	14.27
165.0	4.850	5.853	7.024	7.731	8.163	8.748
168.0	4.060	4.882	5.324	5.782	6.108	6.106
171.0	3.230	3.822	4.027	4.004	4.273	4.315
174.0	2.328	2.651	2.841	2.745	2.768	2.791
177.0	1.662	1.819	1.878	1.901	1.748	1.761
180.0	1.384	1.398	1.393	1.398	1.389	1.389

C Range: 0 - 360DEG
 C Interval: 10.0DEG
 Test Speed: HIGH
 Temperature: 25.3DEG
 Operators: DAMIN
 Test Date: 2020-09-15

γ Range: 0 - 180DEG
 γ Interval: 1.0DEG
 Test System: EVERFINE GO-2000B_V1 SYSTEM V2.0.291
 Humidity: 65.0%
 Test Distance: 8.190m [K=1.0000]
 Remarks: