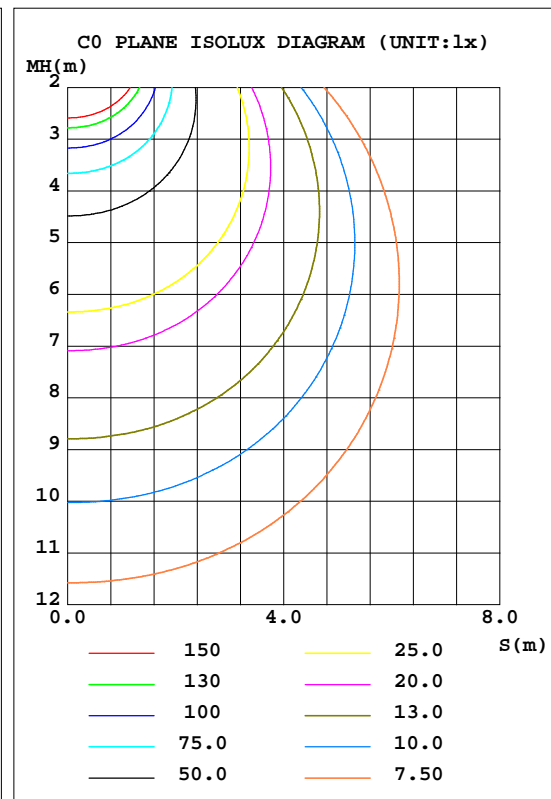
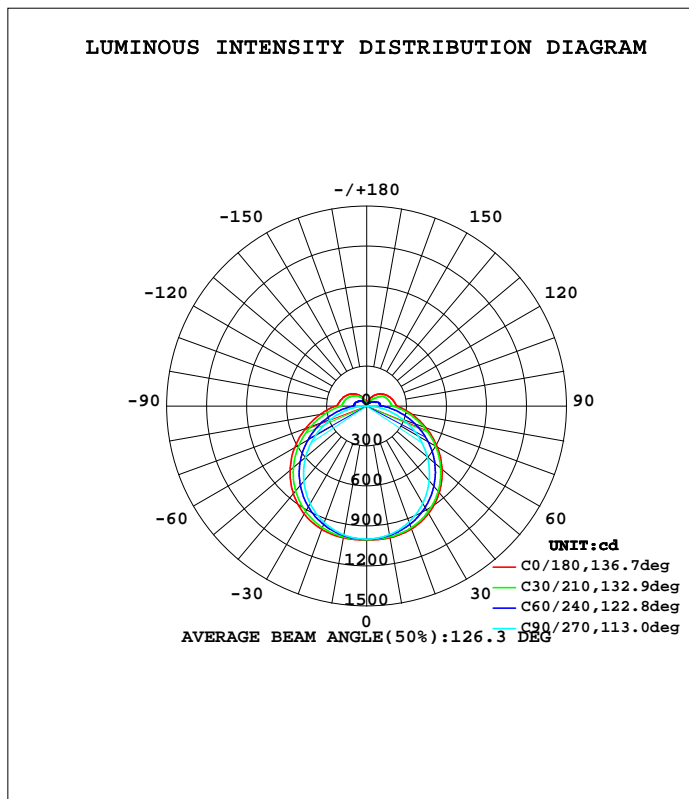


LUMINAIRE PHOTOMETRIC TEST REPORT

Test:U:120.0V I:0.3342A P:39.94W PF:0.9958 Lamp Flux:4059.5x1 lm		
NAME: ZE-41-E35DC	TYPE:LED	WEIGHT:
SPEC.:	DIM.: 1280*33*63	SERIAL No.:1
MFR.: EVERFINE	SUR.:1280*33*8	PROTECTION ANGLE:

DATA OF LAMP		PHOTOMETRIC DATA Eff: 101.63 lm/W			
MODEL	ZE-41-E35DC	I _{max} (cd)	1006	S/MH(C0/180)	1.38
NOMINAL POWER(W)	40	LOR(%)	100.0	S/MH(C90/270)	1.26
RATED VOLTAGE(V)	110-277	TOTAL FLUX(lm)	4059.5	η UP, DN(C0-180)	6.9,42.5
NOMINAL FLUX(lm)	4059.5	CIE CLASS	SEMI-D.	η UP, DN(C180-360)	7.2,43.4
LAMPS INSIDE	1	η up(%)	14.1	CIBSE SHR NOM	1.50
TEST VOLTAGE(V)	120	η down(%)	85.9	CIBSE SHR MAX	1.55



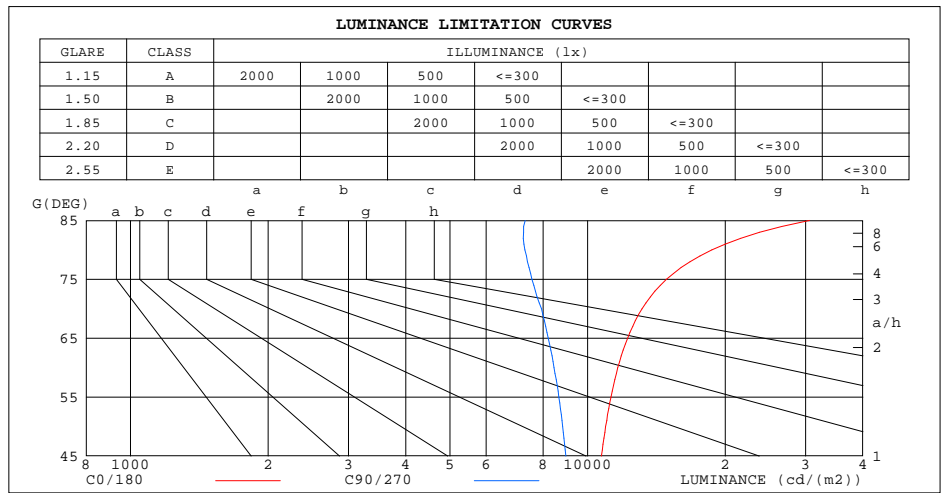
C Range: 0 - 360DEG
 C Interval: 10.0DEG
 Test Speed: HIGH
 Temperature:25.3DEG
 Operators:DAMIN
 Test Date:2020-09-08

γ Range: 0 - 180DEG
 γ Interval: 1.0DEG
 Test System:EVERFINE GO-2000B_V1 SYSTEM V2.0.291
 Humidity:65.0%
 Test Distance:8.190m [K=1.0000]
 Remarks:

ZONAL FLUX DIAGRAM
AND LUMINANCE LIMITATION CURVES

ZONAL FLUX DIAGRAM:

γ	C0	C45	C90	C135	C180	C225	C270	C315	γ	Φ zone	Φ total	$\$lum, lamp$
10	1004	991.6	979.4	984.7	1003	992.0	981.6	988.9	0- 10	94.92	94.92	2.34,2.34
20	982.0	960.5	926.9	946.8	985.3	959.0	930.1	961.0	10- 20	275.8	370.7	9.13,9.13
30	930.1	901.4	841.7	879.6	936.0	896.2	847.0	906.2	20- 30	427.7	798.5	19.7,19.7
40	847.9	814.4	730.1	784.7	856.9	804.6	734.9	823.1	30- 40	531.4	1330	32.8,32.8
50	739.4	701.9	595.2	665.8	750.7	687.4	599.4	714.2	40- 50	574.0	1904	46.9,46.9
60	610.9	569.8	443.7	528.4	625.0	551.5	445.9	583.6	50- 60	551.3	2455	60.5,60.5
70	472.8	425.9	284.9	383.3	486.4	405.0	284.5	440.1	60- 70	469.1	2924	72,72
80	341.0	284.8	132.9	244.4	351.0	263.8	131.9	297.8	70- 80	346.5	3271	80.6,80.6
90	228.8	163.6	4.565	146.4	232.4	152.4	4.830	174.3	80- 90	215.0	3486	85.9,85.9
100	207.9	143.3	5.177	134.8	206.9	139.9	5.357	143.5	90-100	144.3	3630	89.4,89.4
110	190.4	133.1	6.129	122.9	189.8	128.9	6.137	130.8	100-110	128.8	3759	92.6,92.6
120	168.8	101.8	6.629	106.2	168.9	113.7	6.728	104.6	110-120	107.7	3867	95.2,95.2
130	142.4	73.41	4.641	88.17	144.3	94.75	4.798	80.40	120-130	81.48	3948	97.3,97.3
140	114.0	53.18	4.983	68.12	116.5	75.03	5.217	61.27	130-140	55.59	4004	98.6,98.6
150	82.51	37.62	5.561	43.98	86.50	51.69	5.713	43.12	140-150	33.30	4037	99.4,99.4
160	50.97	26.94	6.070	23.27	51.25	29.49	6.164	31.55	150-160	16.18	4053	99.8,99.8
170	12.95	14.17	6.168	8.014	14.94	11.39	6.412	17.70	160-170	5.510	4059	100,100
180	2.764	3.966	5.984	5.499	2.782	3.901	6.101	5.524	170-180	0.8052	4060	100,100
DEG	LUMINOUS INTENSITY:cd									UNIT:lm		



LUMINANCE cd/(m2)		
G(DEG)	C0/180	C90/270
85	30582	7303
80	18701	7288
75	14885	7556
70	13165	7934
65	12227	8205
60	11636	8451
55	11249	8651
50	10956	8819
45	10725	8958

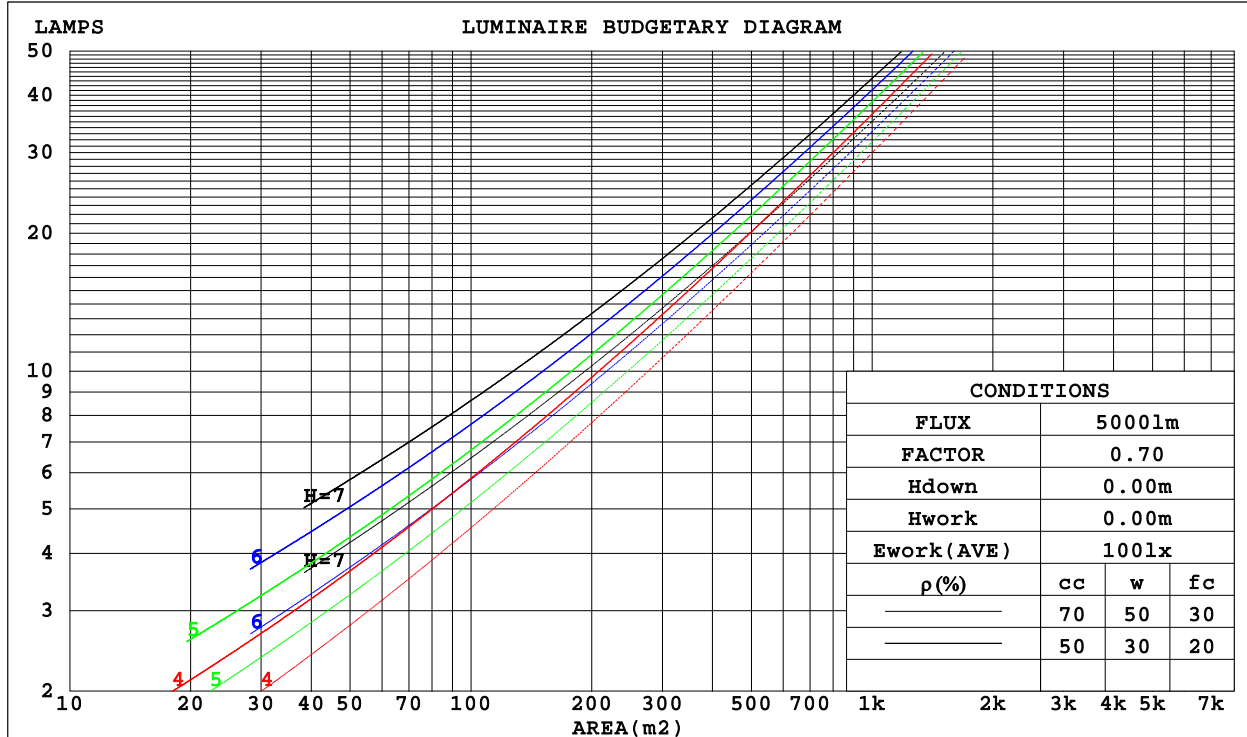
C Range: 0 - 360DEG
C Interval: 10.0DEG
Test Speed: HIGH
Temperature:25.3DEG
Operators:DAMIN
Test Date:2020-09-08

γ Range: 0 - 180DEG
 γ Interval: 1.0DEG
Test System:EVERFINE GO-2000B_V1 SYSTEM V2.0.291
Humidity:65.0%
Test Distance:8.190m [K=1.0000]
Remarks:

CU AND LUMINAIRE BUDGETARY ESTIMATE DIAGRAM

Test:U:120.0V I:0.3342A P:39.94W PF:0.9958 Lamp Flux:4059.5x1 lm		
NAME: ZE-41-E35DC	TYPE:LED	WEIGHT:
SPEC.:	DIM.: 1280*33*63	SERIAL No.:1
MFR.: EVERFINE	SUR.:1280*33*8	PROTECTION ANGLE:

ρ_{cc}	80%			70%			50%			30%			10%			0
ρ_w	50%	30%	10%	50%	30%	10%	50%	30%	10%	50%	30%	10%	50%	30%	10%	0
ρ_{fc}	20%			20%			20%			20%			20%			0
RCR	RCR:Room Cavity Ratio						Coefficients of Utilization(CU)									
0.0	1.16	1.16	1.16	1.11	1.11	1.11	1.03	1.03	1.03	.96	.96	.96	.89	.89	.89	.86
1.0	.98	.93	.89	.94	.90	.86	.87	.84	.80	.81	.78	.76	.75	.73	.71	.68
2.0	.84	.77	.71	.81	.74	.69	.75	.70	.65	.70	.65	.61	.65	.61	.58	.55
3.0	.73	.65	.58	.71	.63	.56	.66	.59	.53	.61	.55	.51	.57	.52	.48	.45
4.0	.65	.55	.48	.62	.54	.47	.58	.51	.45	.54	.48	.43	.50	.45	.41	.38
5.0	.57	.48	.41	.55	.47	.40	.52	.44	.39	.48	.42	.37	.45	.39	.35	.33
6.0	.51	.42	.36	.50	.41	.35	.46	.39	.33	.43	.37	.32	.41	.35	.31	.28
7.0	.46	.37	.31	.45	.37	.31	.42	.35	.29	.39	.33	.28	.37	.31	.27	.25
8.0	.42	.34	.28	.41	.33	.27	.38	.31	.26	.36	.30	.25	.34	.28	.24	.22
9.0	.39	.30	.25	.37	.30	.24	.35	.28	.23	.33	.27	.22	.31	.26	.22	.20
10.0	.36	.28	.22	.34	.27	.22	.33	.26	.21	.31	.25	.20	.29	.24	.20	.18



C Range: 0 - 360DEG
 C Interval: 10.0DEG
 Test Speed: HIGH
 Temperature:25.3DEG
 Operators:DAMIN
 Test Date:2020-09-08

γ Range: 0 - 180DEG
 γ Interval: 1.0DEG
 Test System:EVERFINE GO-2000B_V1 SYSTEM V2.0.291
 Humidity:65.0%
 Test Distance:8.190m [K=1.0000]
 Remarks:

WEC AND CCEC

Test:U:120.0V I:0.3342A P:39.94W PF:0.9958 Lamp Flux:4059.5x1 lm		
NAME: ZE-41-E35DC	TYPE:LED	WEIGHT:
SPEC.:	DIM.: 1280*33*63	SERIAL No.:1
MFR.: EVERFINE	SUR.:1280*33*8	PROTECTION ANGLE:

pcc	80%			70%			50%			30%			10%			0
pw	50%	30%	10%	50%	30%	10%	50%	30%	10%	50%	30%	10%	50%	30%	10%	0
pfc	20%			20%			20%			20%			20%			0
RCR	RCR:Room Cavity Ratio						Wall Exitance Coefficients(WEC)									
0.0																
1.0	.357	.203	.064	.346	.197	.063	.324	.186	.059	.304	.176	.056	.286	.166	.053	
2.0	.318	.174	.053	.308	.169	.052	.288	.160	.050	.270	.152	.047	.254	.144	.045	
3.0	.286	.152	.046	.277	.148	.045	.260	.141	.043	.243	.133	.041	.228	.126	.039	
4.0	.260	.135	.040	.252	.132	.039	.236	.125	.037	.221	.119	.036	.208	.113	.034	
5.0	.238	.121	.035	.230	.118	.034	.216	.112	.033	.203	.107	.032	.190	.102	.031	
6.0	.219	.110	.031	.212	.107	.031	.199	.102	.030	.187	.097	.029	.175	.092	.027	
7.0	.202	.100	.028	.196	.098	.028	.184	.093	.027	.173	.089	.026	.163	.085	.025	
8.0	.188	.092	.026	.182	.090	.025	.172	.086	.024	.161	.082	.024	.152	.078	.023	
9.0	.176	.085	.024	.170	.083	.023	.160	.079	.022	.151	.076	.022	.142	.072	.021	
10.0	.165	.079	.022	.160	.077	.022	.151	.074	.021	.142	.070	.020	.134	.067	.019	

pcc	80%			70%			50%			30%			10%			0
pw	50%	30%	10%	50%	30%	10%	50%	30%	10%	50%	30%	10%	50%	30%	10%	0
pfc	20%			20%			20%			20%			20%			0
RCR	RCR:Room Cavity Ratio						Ceiling Cavity Exitance Coefficients(CCEC)									
0.0	.298	.298	.298	.255	.255	.255	.174	.174	.174	.100	.100	.100	.032	.032	.032	
1.0	.292	.264	.239	.250	.227	.206	.171	.156	.142	.098	.090	.083	.032	.029	.027	
2.0	.285	.241	.204	.244	.208	.176	.167	.144	.123	.096	.084	.072	.031	.027	.024	
3.0	.278	.224	.182	.238	.193	.158	.163	.134	.111	.094	.078	.065	.030	.025	.021	
4.0	.270	.212	.167	.232	.183	.145	.159	.127	.102	.092	.075	.060	.030	.024	.020	
5.0	.262	.202	.157	.225	.174	.136	.155	.122	.096	.090	.072	.057	.029	.023	.019	
6.0	.255	.194	.149	.219	.168	.130	.151	.117	.092	.088	.069	.055	.028	.023	.018	
7.0	.248	.187	.144	.213	.162	.126	.147	.114	.089	.086	.067	.053	.028	.022	.018	
8.0	.242	.181	.140	.208	.157	.122	.144	.110	.087	.084	.065	.052	.027	.021	.017	
9.0	.235	.177	.137	.203	.153	.119	.140	.108	.085	.082	.064	.051	.027	.021	.017	
10.0	.230	.172	.134	.198	.150	.117	.137	.105	.083	.080	.062	.050	.026	.020	.016	

C Range: 0 - 360DEG
 C Interval: 10.0DEG
 Test Speed: HIGH
 Temperature:25.3DEG
 Operators:DAMIN
 Test Date:2020-09-08

γ Range: 0 - 180DEG
 γ Interval: 1.0DEG
 Test System:EVERFINE GO-2000B_V1 SYSTEM V2.0.291
 Humidity:65.0%
 Test Distance:8.190m [K=1.0000]
 Remarks:

UGR(Unified Glare Rating) Table

Test:U:120.0V I:0.3342A P:39.94W PF:0.9958 Lamp Flux:4059.5x1 lm										
NAME: ZE-41-E35DC					TYPE:LED			WEIGHT:		
SPEC.:					DIM.: 1280*33*63			SERIAL No.:1		
MFR.: EVERFINE					SUR.:1280*33*8			PROTECTION ANGLE:		
ceiling/cavity	0.7	0.7	0.5	0.5	0.3	0.7	0.7	0.5	0.5	0.3
walls	0.5	0.3	0.5	0.3	0.3	0.5	0.3	0.5	0.3	0.3
working plane	0.2	0.2	0.2	0.2	0.2	0.2	0.2	0.2	0.2	0.2
Room dimensions	Viewed crosswise					Viewed endwise				
x = 2H y = 2H	20.8	22.2	21.2	22.6	23.1	19.5	20.9	20.0	21.4	21.9
3H	22.9	24.2	23.4	24.7	25.2	21.1	22.4	21.6	22.8	23.4
4H	24.1	25.3	24.6	25.8	26.3	21.7	22.9	22.2	23.4	24.0
6H	25.3	26.4	25.8	26.9	27.5	22.2	23.4	22.8	23.9	24.5
8H	25.9	27.0	26.4	27.5	28.1	22.4	23.5	22.9	24.0	24.6
12H	26.6	27.7	27.1	28.2	28.8	22.5	23.6	23.1	24.1	24.7
4H 2H	21.4	22.6	21.9	23.1	23.6	20.5	21.7	21.0	22.2	22.7
3H	23.8	24.8	24.3	25.4	26.0	22.3	23.4	22.8	23.9	24.5
4H	25.1	26.1	25.6	26.6	27.2	23.1	24.1	23.7	24.7	25.3
6H	26.5	27.3	27.1	27.9	28.6	23.8	24.7	24.4	25.3	25.9
8H	27.2	28.0	27.8	28.6	29.3	24.1	24.9	24.7	25.5	26.1
12H	28.1	28.8	28.7	29.4	30.1	24.2	25.0	24.9	25.6	26.3
8H 4H	25.4	26.2	26.0	26.8	27.5	23.8	24.6	24.4	25.2	25.9
6H	27.1	27.8	27.7	28.4	29.1	24.8	25.5	25.5	26.1	26.9
8H	28.0	28.6	28.7	29.3	30.0	25.3	25.9	25.9	26.5	27.3
12H	29.1	29.6	29.8	30.3	31.1	25.6	26.2	26.3	26.8	27.6
12H 4H	25.5	26.2	26.1	26.8	27.5	24.0	24.7	24.6	25.4	26.1
6H	27.2	27.8	27.9	28.5	29.2	25.2	25.8	25.8	26.4	27.2
8H	28.2	28.8	28.9	29.4	30.2	25.7	26.3	26.4	26.9	27.7
Variations with the observer position at spacings:										
S = 1.0H	+ 0.1 / - 0.1					+ 0.1 / - 0.1				
1.5H	+ 0.2 / - 0.3					+ 0.2 / - 0.3				
2.0H	+ 0.2 / - 0.4					+ 0.2 / - 0.4				

CIE Pub.117 Corrected 4060 lm Total Lamp Luminous Flux.(8log(F/F0) = 4.9)

C Range: 0 - 360DEG
 C Interval: 10.0DEG
 Test Speed: HIGH
 Temperature:25.3DEG
 Operators:DAMIN
 Test Date:2020-09-08

γ Range: 0 - 180DEG
 γ Interval: 1.0DEG
 Test System:EVERFINE GO-2000B_V1 SYSTEM V2.0.291
 Humidity:65.0%
 Test Distance:8.190m [K=1.0000]
 Remarks:

UTILIZATION FACTORS TABLE

Test:U:120.0V I:0.3342A P:39.94W PF:0.9958 Lamp Flux:4059.5x1 lm		
NAME: ZE-41-E35DC	TYPE:LED	WEIGHT:
SPEC.:	DIM.: 1280*33*63	SERIAL No.:1
MFR.: EVERFINE	SUR.:1280*33*8	PROTECTION ANGLE:

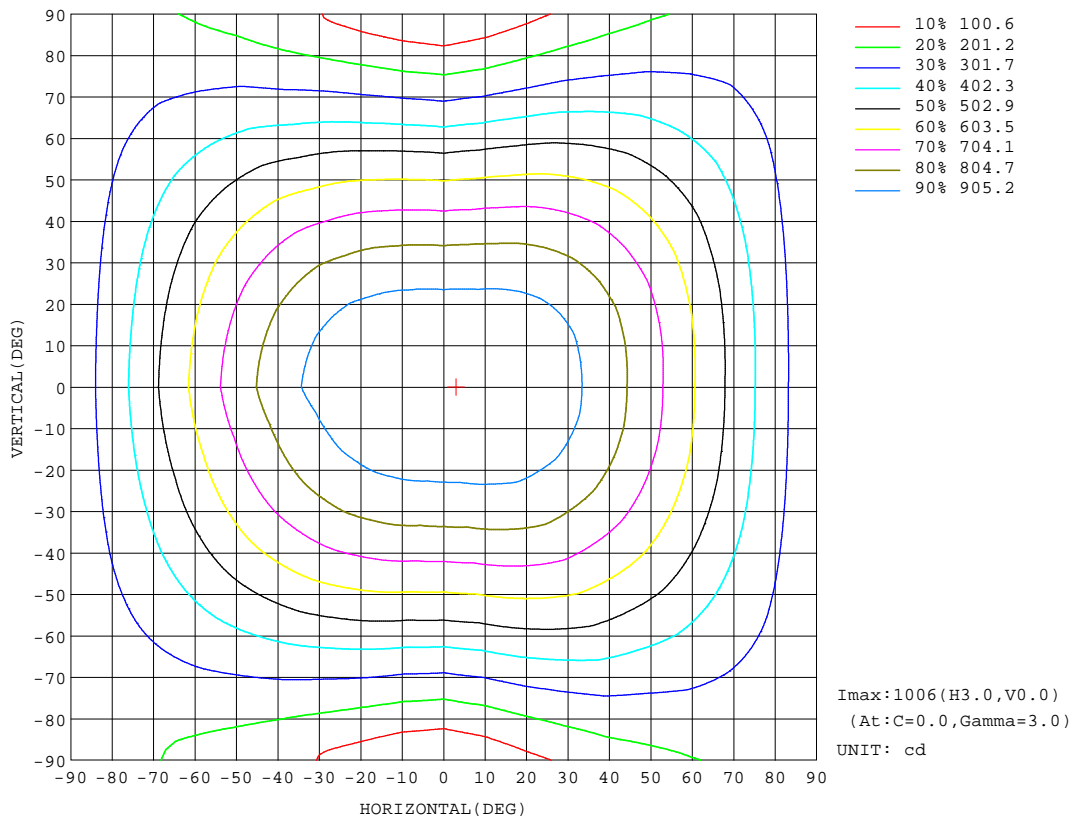
REFLECTANCE										
Ceiling	0.8	0.8	0.8	0.7	0.7	0.7	0.5	0.5	0.5	0
Walls	0.7	0.5	0.3	0.7	0.5	0.3	0.7	0.5	0.3	0
Working plane	0.2	0.2	0.2	0.2	0.2	0.2	0.2	0.2	0.2	0
ROOM INDEX	UTILIZATION FACTORS(PERCENT) k(RI) x RCR = 5									
k = 0.60	50	38	31	49	38	31	47	37	30	24
0.80	60	47	39	58	46	39	56	45	38	30
1.00	68	55	47	66	54	47	63	55	46	37
1.25	75	63	55	73	62	54	69	59	52	43
1.50	80	68	60	77	67	59	73	64	57	48
2.00	87	77	69	84	75	68	79	71	65	54
2.50	91	82	75	88	80	73	82	75	70	58
3.00	95	87	80	92	84	78	86	79	74	62
4.00	100	92	86	96	89	84	89	84	80	67
5.00	102	96	91	99	93	88	92	87	83	70
ROOM INDEX	UF(total)									Direct
According to DIN EN 13032-2 2004			Suspended				SHRNOM = 1.25			

C Range: 0 - 360DEG
 C Interval: 10.0DEG
 Test Speed: HIGH
 Temperature:25.3DEG
 Operators:DAMIN
 Test Date:2020-09-08

γ Range: 0 - 180DEG
 γ Interval: 1.0DEG
 Test System:EVERFINE GO-2000B_V1 SYSTEM V2.0.291
 Humidity:65.0%
 Test Distance:8.190m [K=1.0000]
 Remarks:

ISOCANDELA DIAGRAM

Test:U:120.0V I:0.3342A P:39.94W PF:0.9958 Lamp Flux:4059.5x1 lm		
NAME: ZE-41-E35DC	TYPE:LED	WEIGHT:
SPEC.:	DIM.: 1280*33*63	SERIAL No.:1
MFR.: EVERFINE	SUR.:1280*33*8	PROTECTION ANGLE:



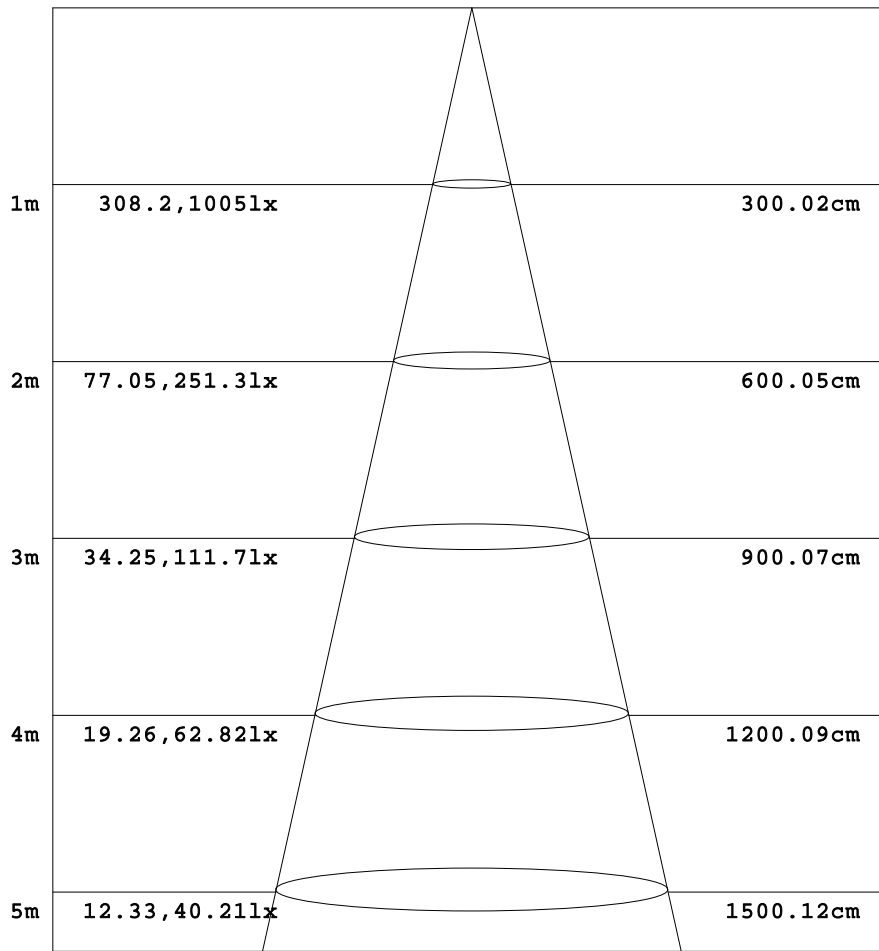
C Range: 0 - 360DEG
 C Interval: 10.0DEG
 Test Speed: HIGH
 Temperature:25.3DEG
 Operators:DAMIN
 Test Date:2020-09-08

γ Range: 0 - 180DEG
 γ Interval: 1.0DEG
 Test System:EVERFINE GO-2000B_V1 SYSTEM V2.0.291
 Humidity:65.0%
 Test Distance:8.190m [K=1.0000]
 Remarks:

AAI Figure

Test:U:120.0V I:0.3342A P:39.94W PF:0.9958 Lamp Flux:4059.5x1 lm		
NAME: ZE-41-E35DC	TYPE:LED	WEIGHT:
SPEC.:	DIM.: 1280*33*63	SERIAL No.:1
MFR.: EVERFINE	SUR.:1280*33*8	PROTECTION ANGLE:

Flux out:2296 lm



Height Eavg, Emax Angle:112.62deg Diameter

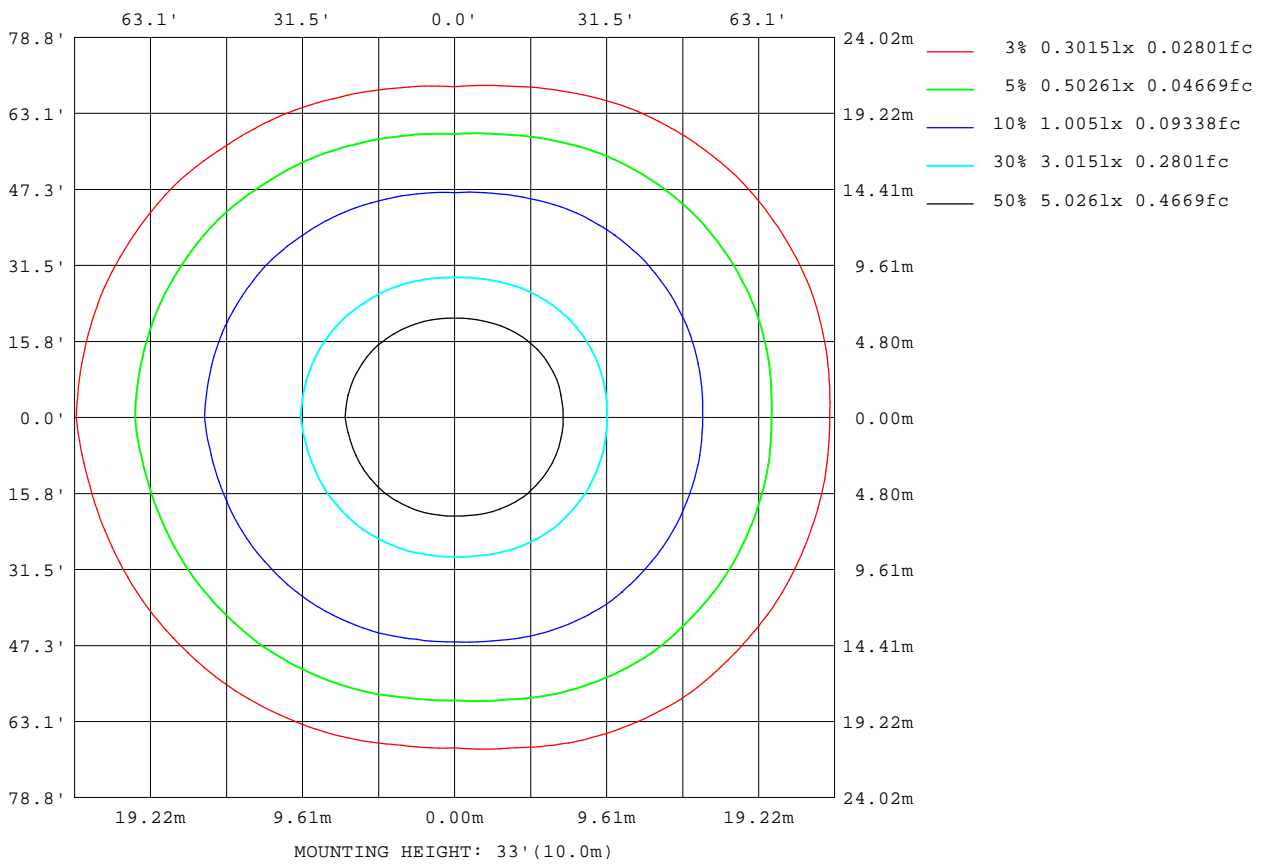
Note:The Curves indicate the illuminated area and the average illumination when the luminaire is at different distance.

C Range: 0 - 360DEG
 C Interval: 10.0DEG
 Test Speed: HIGH
 Temperature:25.3DEG
 Operators:DAMIN
 Test Date:2020-09-08

γ Range: 0 - 180DEG
 γ Interval: 1.0DEG
 Test System:EVERFINE GO-2000B_V1 SYSTEM V2.0.291
 Humidity:65.0%
 Test Distance:8.190m [K=1.0000]
 Remarks:

ISOLUX DIAGRAM

Test:U:120.0V I:0.3342A P:39.94W PF:0.9958 Lamp Flux:4059.5x1 lm		
NAME: ZE-41-E35DC	TYPE:LED	WEIGHT:
SPEC.:	DIM.: 1280*33*63	SERIAL No.:1
MFR.: EVERFINE	SUR.:1280*33*8	PROTECTION ANGLE:



C Range: 0 - 360DEG
 C Interval: 10.0DEG
 Test Speed: HIGH
 Temperature:25.3DEG
 Operators:DAMIN
 Test Date:2020-09-08

γ Range: 0 - 180DEG
 γ Interval: 1.0DEG
 Test System:EVERFINE GO-2000B_V1 SYSTEM V2.0.291
 Humidity:65.0%
 Test Distance:8.190m [K=1.0000]
 Remarks:

LED Avg.L Report

Test:U:120.0V I:0.3342A P:39.94W PF:0.9958 Lamp Flux:4059.5x1 lm		
NAME: ZE-41-E35DC	TYPE:LED	WEIGHT:
SPEC.:	DIM.: 1280*33*63	SERIAL No.:1
MFR.: EVERFINE	SUR.:1280*33*8	PROTECTION ANGLE:

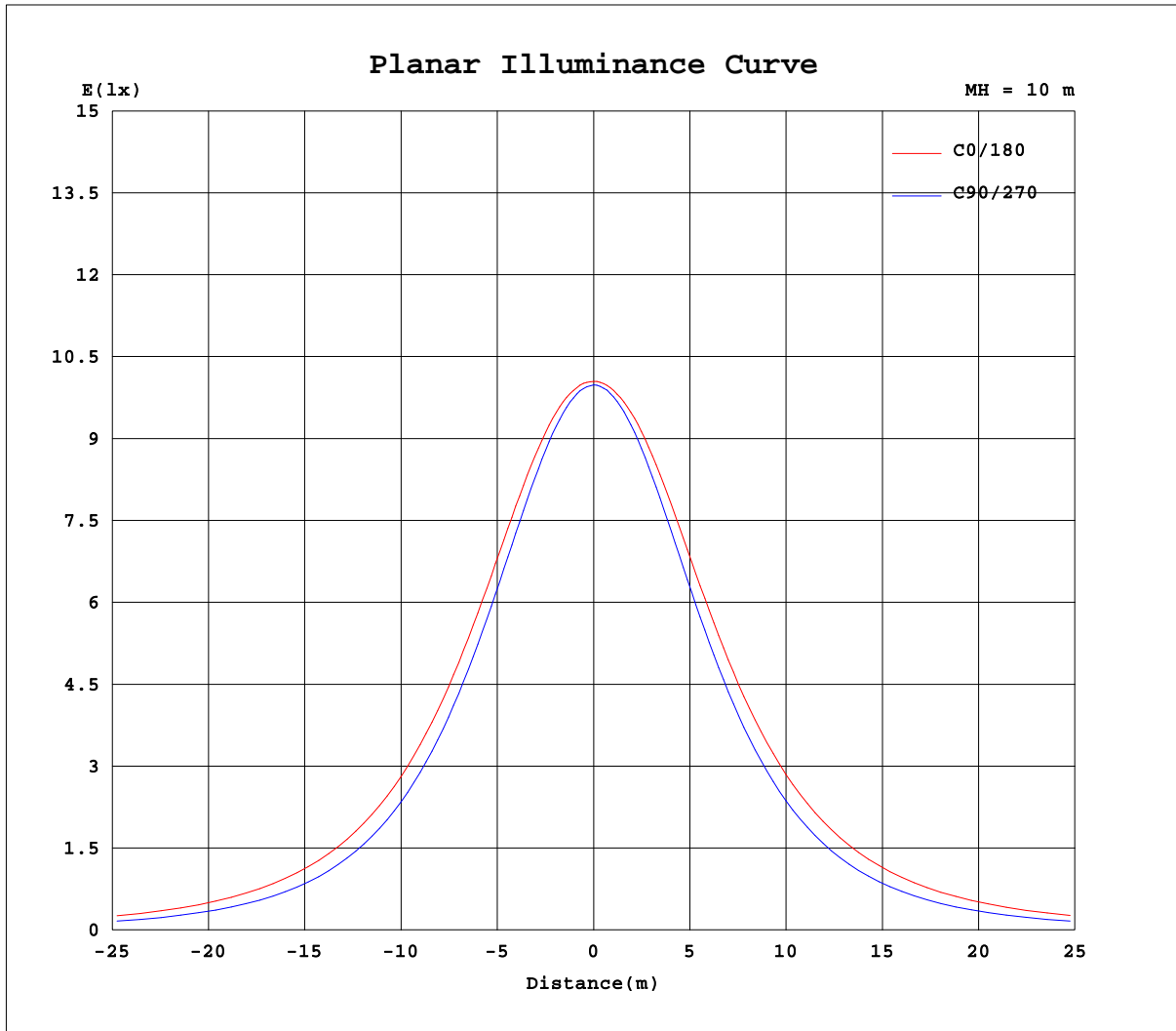
AvgL	cd/m2
L_0~180(65)av	12384
L_0~180(75)av	15114
L_0~180(85)av	31159
L_90~270(65)av	8215
L_90~270(75)av	7571
L_90~270(85)av	7182
L_45(65)av	10978
L_45(75)av	12587
L_45(85)av	23071

Standard: GB/T 29293-2012

C Range: 0 - 360DEG
C Interval: 10.0DEG
Test Speed: HIGH
Temperature:25.3DEG
Operators:DAMIN
Test Date:2020-09-08

γ Range: 0 - 180DEG
 γ Interval: 1.0DEG
Test System:EVERFINE GO-2000B_V1 SYSTEM V2.0.291
Humidity:65.0%
Test Distance:8.190m [K=1.0000]
Remarks:

Planar Illuminance Curve



C Range: 0 - 360DEG
 C Interval: 10.0DEG
 Test Speed: HIGH
 Temperature: 25.3DEG
 Operators: DAMIN
 Test Date: 2020-09-08

γ Range: 0 - 180DEG
 γ Interval: 1.0DEG
 Test System: EVERFINE GO-2000B_V1 SYSTEM V2.0.291
 Humidity: 65.0%
 Test Distance: 8.190m [K=1.0000]
 Remarks:

LUMINOUS DISTRIBUTION INTENSITY DATA

Test:U:120.0V I:0.3342A P:39.94W PF:0.9958 Lamp Flux:4059.5x1 lm		
NAME: ZE-41-E35DC	TYPE:LED	WEIGHT:
SPEC.:	DIM.: 1280*33*63	SERIAL No.:1
MFR.: EVERFINE	SUR.:1280*33*8	PROTECTION ANGLE:

Table--1

UNIT: cd

C(DEG) γ (DEG)	0	10	20	30	40	50	60	70	80	90	100	110	120	130	140	150	160	170	180
0	1005	1003	1003	1002	1002	1001	1000	999	999	999	998	997	997	996	996	996	995	995	1005
5	1005	1004	1002	1001	999	998	996	995	994	993	992	993	993	993	994	994	994	994	1005
10	1004	1002	1000	997	993	990	986	983	980	979	979	980	981	984	986	988	990	992	1003
15	996	995	991	988	982	976	969	964	959	957	957	960	962	967	971	976	980	984	998
20	982	981	977	972	964	957	946	937	929	927	927	932	936	944	950	957	962	969	985
25	960	960	954	949	939	930	916	904	892	889	889	897	903	913	921	930	937	946	965
30	930	929	924	918	906	896	879	862	847	842	844	853	863	875	884	896	904	915	936
35	892	893	886	880	867	856	835	815	796	789	791	804	815	830	841	854	865	877	900
40	848	848	841	835	820	808	786	762	738	730	733	748	762	778	791	806	818	832	857
45	796	797	790	783	768	755	729	703	676	665	669	686	702	721	735	752	765	780	807
50	739	740	734	725	709	695	668	639	608	595	601	620	637	658	674	692	707	723	751
55	678	679	672	663	645	631	602	571	536	521	527	549	568	590	608	627	643	662	690
60	611	612	605	596	577	562	531	498	461	444	451	474	495	519	538	559	576	596	625
65	543	544	536	526	507	491	458	423	384	364	372	397	420	446	466	489	507	527	556
70	473	474	466	455	434	418	384	348	306	285	293	321	345	372	394	418	437	458	486
75	405	405	396	384	362	345	310	272	230	205	217	244	272	300	324	348	368	389	417
80	341	341	332	318	295	274	240	201	159	133	145	174	203	231	258	284	305	325	351
85	280	280	271	255	233	211	176	136	93.2	66.8	79.1	110	140	171	199	223	246	265	290
90	229	225	215	198	175	152	116	77.5	33.7	4.56	25.8	62.1	98.2	131	161	185	205	217	232
95	217	212	203	185	163	134	101	64.5	28.4	4.64	24.3	58.8	93.5	125	154	176	195	206	216
100	208	204	195	178	157	130	98.5	64.0	28.6	5.18	23.3	57.0	90.5	121	148	170	187	198	207
105	199	195	187	171	152	126	96.4	60.4	29.3	5.65	22.0	53.3	86.9	116	142	163	180	190	199
110	190	187	179	164	145	122	84.8	54.2	27.9	6.13	19.7	51.3	80.6	111	135	155	172	181	190
115	180	177	170	156	136	108	72.1	49.0	25.1	6.46	16.8	46.4	75.5	103	127	146	162	171	180
120	169	166	159	147	116	87.9	63.9	45.3	22.8	6.63	14.5	41.8	71.0	94.7	118	137	152	160	169
125	156	154	148	128	98.5	73.5	57.3	40.1	20.8	4.55	10.5	34.6	63.8	87.7	105	126	139	149	157
130	142	141	135	103	81.8	65.0	51.5	35.3	18.1	4.64	8.77	28.9	56.4	79.9	96.5	113	127	136	144
135	128	127	116	86.0	66.7	57.3	44.5	30.9	15.8	4.81	7.28	23.5	46.5	69.8	87.4	98.0	113	123	131
140	114	113	88.3	70.1	57.3	49.1	38.1	26.7	14.6	4.98	5.96	19.7	38.8	59.2	77.0	88.7	96.5	109	117
145	98.9	98.3	68.3	59.1	47.9	40.8	33.7	23.8	14.0	5.25	5.19	16.4	29.9	48.4	63.5	77.0	83.0	92.6	102
150	82.5	77.2	51.6	48.0	38.9	36.3	30.3	21.9	13.3	5.56	4.69	12.8	23.4	37.0	50.9	61.8	70.7	75.6	86.5
155	66.5	50.2	39.5	36.5	32.2	31.4	26.5	19.6	12.3	5.85	4.19	9.26	18.4	27.4	37.7	47.8	56.1	59.2	67.4
160	51.0	29.7	30.0	27.0	27.2	26.7	21.7	17.1	11.3	6.07	3.23	6.65	13.0	19.8	26.7	33.1	39.3	45.5	51.2
165	30.2	18.2	19.6	20.1	20.7	20.8	17.7	14.0	10.1	6.25	3.80	4.90	7.85	12.7	16.9	21.7	25.1	28.7	38.0
170	12.9	10.9	12.4	14.1	14.1	14.3	13.0	10.9	8.63	6.17	4.31	3.12	4.82	6.80	9.23	11.4	13.6	15.4	14.9
175	4.81	5.77	6.99	7.74	7.56	8.80	8.55	7.94	7.21	6.02	4.99	4.15	3.63	3.07	4.26	5.06	5.75	6.71	6.61
180	2.76	2.75	2.83	3.03	3.54	4.40	5.01	5.42	6.09	5.98	6.15	6.10	5.95	5.75	5.24	4.89	4.01	3.41	2.78

C Range: 0 - 360DEG
 C Interval: 10.0DEG
 Test Speed: HIGH
 Temperature:25.3DEG
 Operators:DAMIN
 Test Date:2020-09-08

γ Range: 0 - 180DEG
 γ Interval: 1.0DEG
 Test System:EVERFINE GO-2000B_V1 SYSTEM V2.0.291
 Humidity:65.0%
 Test Distance:8.190m [K=1.0000]
 Remarks:

LUMINOUS DISTRIBUTION INTENSITY DATA

Test:U:120.0V I:0.3342A P:39.94W PF:0.9958 Lamp Flux:4059.5x1 lm		
NAME: ZE-41-E35DC	TYPE:LED	WEIGHT:
SPEC.:	DIM.: 1280*33*63	SERIAL No.:1
MFR.: EVERFINE	SUR.:1280*33*8	PROTECTION ANGLE:

Table--2

UNIT: cd

C(DEG) γ (DEG)	190	200	210	220	230	240	250	260	270	280	290	300	310	320	330	340	350		
0	1003	1003	1002	1002	1001	1000	999	999	999	998	997	997	996	996	996	995	995		
5	1003	1002	1001	1000	998	997	996	995	994	994	994	994	995	995	995	996	995		
10	1001	1000	997	994	990	987	985	983	982	982	983	985	987	990	992	994	994		
15	995	992	988	982	976	971	965	962	960	962	964	970	975	981	985	988	989		
20	982	978	971	964	954	946	938	934	930	933	938	947	956	966	972	977	977		
25	961	955	947	938	924	914	903	897	893	896	904	918	931	944	952	957	957		
30	932	926	915	905	887	875	861	853	847	852	864	882	899	914	924	931	929		
35	894	888	876	864	844	829	812	801	794	802	817	840	859	878	888	896	893		
40	851	843	830	816	793	776	757	743	735	744	764	790	813	833	846	853	851		
45	801	792	778	762	736	717	695	679	670	682	705	736	760	783	796	805	802		
50	744	736	719	701	673	652	628	610	599	613	640	674	702	727	740	750	746		
55	682	673	655	637	606	583	556	537	524	541	572	609	638	665	680	690	686		
60	617	607	587	568	535	510	481	459	446	465	499	538	570	598	614	625	622		
65	548	537	517	496	461	434	403	380	365	387	423	465	498	528	545	557	554		
70	478	467	446	423	387	358	325	300	284	308	347	390	425	456	474	487	484		
75	408	396	375	351	314	284	250	221	206	229	271	316	352	384	403	417	416		
80	343	330	308	283	245	212	179	149	132	158	200	243	281	314	336	351	351		
85	282	269	247	220	183	149	113	82.7	64.6	92.2	133	179	217	250	273	290	290		
90	226	212	194	168	137	103	65.9	28.9	4.83	31.7	74.7	120	158	191	214	229	232		
95	213	201	184	159	130	98.0	62.7	27.5	5.06	27.0	63.2	100	134	164	188	204	214		
100	204	193	177	154	126	95.1	61.0	26.6	5.36	27.5	61.3	98.0	130	157	180	196	205		
105	196	185	170	148	121	91.7	57.3	24.7	5.76	28.2	59.5	91.7	126	152	174	188	197		
110	187	177	163	142	116	87.4	53.8	22.7	6.14	26.7	56.1	88.4	116	145	167	180	188		
115	177	168	154	134	110	80.0	51.2	20.5	6.47	24.9	51.0	75.6	106	132	157	172	179		
120	166	157	144	126	101	74.3	45.8	17.1	6.73	23.2	47.1	68.7	92.8	116	139	162	168		
125	154	146	133	117	91.9	68.8	40.7	13.4	5.83	21.2	41.4	62.2	78.9	103	127	146	156		
130	141	134	122	107	82.3	62.6	35.7	10.2	4.80	18.5	37.0	56.3	72.0	88.8	107	131	143		
135	127	121	110	96.5	74.4	53.3	28.4	8.56	5.04	16.6	33.0	48.7	63.9	76.1	91.4	117	125		
140	113	108	98.0	84.7	65.4	46.0	21.8	7.20	5.22	15.4	29.0	41.9	55.2	67.4	76.0	93.0	108		
145	98.9	93.8	84.0	72.5	55.1	37.6	17.7	6.20	5.48	14.7	26.8	37.3	45.9	56.7	66.2	74.8	97.2		
150	83.8	78.3	68.9	58.5	44.9	27.5	14.4	5.43	5.71	13.8	23.5	33.9	40.4	45.8	54.1	59.4	77.9		
155	66.1	61.1	54.5	46.6	33.6	20.5	10.6	4.66	5.95	12.8	20.9	29.6	35.8	39.0	42.4	46.2	52.2		
160	51.4	46.2	41.8	35.7	23.2	15.1	8.08	3.55	6.16	11.6	18.2	24.6	30.0	33.1	33.1	36.3	36.6		
165	35.1	32.3	28.5	23.2	15.5	10.2	5.81	3.63	6.34	10.4	15.2	20.0	23.5	25.6	24.8	25.4	23.5		
170	20.9	19.3	16.3	13.6	9.15	6.20	3.60	4.35	6.41	9.06	12.0	14.9	17.0	18.4	18.0	16.1	13.8		
175	8.26	8.43	7.52	6.53	4.49	3.01	3.81	4.85	6.09	7.39	8.67	9.95	10.7	11.3	10.8	9.82	7.64		
180	2.75	2.80	3.10	3.47	4.33	4.97	5.48	6.04	6.10	6.16	6.10	5.92	5.70	5.35	4.72	4.15	3.34		

C Range: 0 - 360DEG
 C Interval: 10.0DEG
 Test Speed: HIGH
 Temperature:25.3DEG
 Operators:DAMIN
 Test Date:2020-09-08

γ Range: 0 - 180DEG
 γ Interval: 1.0DEG
 Test System:EVERFINE GO-2000B_V1 SYSTEM V2.0.291
 Humidity:65.0%
 Test Distance:8.190m [K=1.0000]
 Remarks:

Photometric Data Table [cd]

G/C	0.0	10.0	20.0	30.0	40.0	50.0	60.0	70.0	80.0	90.0
0.0	1005	1003	1003	1002	1002	1001	999.7	999.3	998.7	998.7
3.0	1006	1004	1002	1001	1000	999.5	998.4	998.0	997.1	996.2
6.0	1005	1004	1002	1001	997.7	996.7	994.9	993.5	991.8	991.1
9.0	1004	1002	1001	997.5	994.6	992.3	988.8	986.1	983.8	983.2
12.0	1001	999.4	996.9	994.1	989.2	985.5	979.4	975.8	972.7	971.7
15.0	995.5	995.1	991.3	987.7	982.1	976.3	969.0	963.7	958.9	956.9
18.0	988.9	987.6	984.1	979.2	972.5	965.7	956.0	948.3	941.8	940.2
21.0	978.2	977.5	973.3	968.2	959.7	951.7	940.0	930.6	922.1	919.6
24.0	965.5	964.1	959.9	954.3	944.8	936.4	921.9	910.5	899.6	896.4
27.0	949.1	948.4	943.4	937.8	926.9	917.3	901.7	887.6	874.2	870.2
30.0	930.1	929.3	924.4	918.2	906.4	896.4	878.6	862.3	847.3	841.7
33.0	907.9	907.9	902.2	896.1	883.5	873.0	852.0	834.8	817.0	811.4
36.0	884.4	884.0	878.3	871.7	857.8	847.1	825.7	805.0	785.0	777.8
39.0	857.1	857.6	851.4	844.3	830.3	818.3	795.7	773.0	750.2	742.6
42.0	827.8	828.2	821.6	814.3	799.7	787.3	763.6	738.8	713.9	704.8
45.0	796.3	796.5	790.5	782.9	767.8	754.7	729.3	703.0	675.8	665.1
48.0	762.7	763.6	756.9	748.6	732.8	720.0	693.2	665.2	635.9	623.8
51.0	727.6	727.9	721.6	713.0	696.6	682.7	655.1	625.7	594.0	580.6
54.0	690.1	691.0	684.1	675.8	658.3	644.0	615.0	584.6	550.9	536.3
57.0	651.7	652.3	644.9	636.0	618.3	604.0	573.9	542.2	506.6	490.6
60.0	610.9	612.4	605.1	595.5	577.1	562.4	531.4	498.4	460.9	443.7
63.0	570.7	571.8	563.8	554.3	535.0	519.9	487.7	453.9	414.9	396.3
66.0	528.9	529.7	522.1	511.8	491.8	476.1	443.3	408.5	368.4	348.3
69.0	486.4	487.7	479.8	468.9	448.6	432.0	398.4	362.9	321.8	300.4
72.0	445.0	445.8	437.6	426.4	405.0	388.2	354.1	317.4	275.5	251.4
75.0	404.5	404.8	396.1	384.1	362.4	344.7	310.1	272.3	230.3	205.3
78.0	365.9	366.0	356.6	343.6	321.0	302.2	267.3	228.3	186.6	161.2
81.0	328.8	328.8	319.1	305.6	281.9	260.2	226.2	187.3	145.1	119.2
84.0	291.9	291.9	282.4	268.4	245.4	222.7	187.8	148.2	105.6	79.46
87.0	256.3	254.8	246.8	231.5	209.4	187.0	152.1	112.1	68.72	41.78
90.0	228.8	224.6	215.2	197.6	175.2	152.1	116.4	77.53	33.68	4.565
93.0	220.7	216.3	206.6	188.5	165.8	136.6	102.6	65.34	28.13	4.407
96.0	214.9	210.4	201.3	183.4	161.5	133.0	100.1	64.30	28.22	4.749
99.0	209.5	205.2	196.4	179.1	157.9	130.3	98.79	64.16	28.44	5.083
102.0	204.5	200.4	191.8	175.2	154.7	128.3	97.68	59.11	28.98	5.362
105.0	199.4	195.4	187.2	171.3	151.6	126.1	96.37	60.35	29.32	5.651
108.0	194.1	190.3	182.5	167.2	148.1	123.5	93.20	55.81	29.10	5.944
111.0	188.4	184.8	177.3	162.6	143.3	120.6	83.35	53.49	27.28	6.201
114.0	182.3	178.9	171.8	157.7	139.0	111.3	73.39	49.52	25.56	6.399
117.0	175.7	172.5	165.7	152.3	127.7	101.3	68.80	47.84	24.10	6.566
120.0	168.8	165.8	159.4	146.6	115.8	87.85	63.89	45.29	22.80	6.629
123.0	161.5	158.8	152.6	138.3	105.1	77.12	60.47	42.05	21.79	5.519
126.0	153.9	151.4	145.2	124.0	95.45	71.47	56.28	39.07	20.31	4.496
129.0	145.6	143.6	137.4	107.6	85.63	66.53	52.88	36.26	18.75	4.600
132.0	136.9	135.6	129.8	95.87	72.92	62.20	48.61	33.56	17.10	4.717
135.0	128.5	127.4	115.8	85.99	66.75	57.35	44.50	30.93	15.77	4.807
138.0	119.9	118.9	100.1	76.67	61.26	52.51	40.58	28.26	14.81	4.902
141.0	111.0	110.2	82.71	67.01	55.18	47.37	36.82	26.18	14.43	5.006
144.0	102.0	101.3	71.63	60.94	49.65	42.36	34.39	24.83	14.13	5.177
147.0	92.57	92.26	61.83	54.64	44.45	38.50	32.42	22.59	13.75	5.389
150.0	82.51	77.19	51.60	47.96	38.94	36.30	30.30	21.86	13.26	5.561
153.0	72.85	62.05	44.12	41.64	34.78	33.24	28.06	20.45	12.69	5.745
156.0	63.31	44.77	37.54	33.65	31.34	30.53	25.69	19.09	12.11	5.890
159.0	54.08	32.41	31.72	28.59	28.31	27.63	22.69	17.66	11.51	6.034
162.0	44.40	25.24	26.00	24.07	24.53	24.40	20.25	16.02	10.88	6.156
165.0	30.20	18.17	19.59	20.09	20.74	20.82	17.73	14.01	10.14	6.250
168.0	16.28	13.37	14.88	16.65	16.71	16.72	14.91	12.26	9.266	6.241
171.0	10.99	9.734	11.28	12.82	12.69	13.21	12.06	10.25	8.336	6.065
174.0	5.535	6.549	8.076	8.962	8.688	9.865	9.349	8.522	7.430	6.016
177.0	3.632	4.211	5.012	5.485	5.611	6.875	6.994	6.923	6.780	6.029
180.0	2.764	2.751	2.827	3.035	3.535	4.397	5.005	5.420	6.092	5.984
G/C	100.0	110.0	120.0	130.0	140.0	150.0	160.0	170.0	180.0	190.0
0.0	997.5	997.3	996.5	996.2	996.2	995.9	995.5	994.9	1005	1003
3.0	995.5	995.7	994.8	995.1	994.9	994.9	994.8	994.7	1005	1004
6.0	990.6	991.0	990.7	991.5	992.3	993.2	993.6	994.5	1005	1003
9.0	982.4	983.6	984.1	986.2	987.5	989.4	991.1	992.9	1004	1002
12.0	971.0	973.2	974.4	978.2	980.7	984.1	986.6	989.2	1002	999.8
15.0	956.6	959.9	962.4	967.4	971.2	976.2	979.6	984.0	997.7	995.2
18.0	939.7	943.8	947.8	954.0	959.2	965.9	970.2	975.7	991.0	987.9
21.0	919.7	925.3	930.8	938.9	944.7	952.3	957.6	964.7	981.9	978.2
24.0	896.8	903.9	910.5	919.8	927.5	936.0	943.2	950.8	969.4	965.4
27.0	871.6	879.8	888.0	898.8	907.0	917.2	925.1	934.8	953.8	949.8
30.0	844.0	853.4	862.8	874.9	884.3	896.0	904.4	914.9	936.0	931.6

C Range: 0 - 360DEG
 C Interval: 10.0DEG
 Test Speed: HIGH
 Temperature: 25.3DEG
 Operators: DAMIN
 Test Date: 2020-09-08

γ Range: 0 - 180DEG
 γ Interval: 1.0DEG
 Test System: EVERFINE GO-2000B_V1 SYSTEM V2.0.291
 Humidity: 65.0%
 Test Distance: 8.190m [K=1.0000]
 Remarks:

Photometric Data Table [cd]

33.0	812.7	824.5	834.8	848.7	859.2	871.4	881.7	893.1	915.7	910.3
36.0	780.8	793.2	804.7	820.0	831.9	845.4	856.0	868.6	892.4	886.0
39.0	745.5	760.0	772.7	789.0	801.7	816.3	828.0	841.5	866.2	860.2
42.0	708.4	723.9	738.2	755.6	769.6	784.8	797.2	812.0	837.3	831.3
45.0	669.5	686.4	701.9	720.8	735.3	751.7	765.1	780.3	806.8	800.5
48.0	628.8	646.9	663.7	683.7	699.0	716.3	730.7	747.0	774.4	767.0
51.0	586.3	605.8	623.6	644.5	660.8	679.2	694.3	711.3	739.2	731.7
54.0	542.2	563.3	582.4	603.9	621.3	640.6	656.5	674.5	702.5	694.9
57.0	496.9	519.2	539.0	562.0	580.5	600.4	616.8	635.5	664.6	656.3
60.0	450.7	474.2	494.9	518.8	538.0	559.2	576.1	595.7	625.0	616.6
63.0	403.8	428.4	450.1	475.3	495.3	517.4	534.9	555.4	584.2	575.8
66.0	356.2	382.1	404.8	431.0	451.8	474.8	493.1	513.6	542.4	533.7
69.0	309.0	335.8	359.8	386.8	408.3	431.9	450.9	472.0	500.6	492.0
72.0	262.3	290.1	315.0	342.9	365.5	389.4	409.2	430.1	458.2	449.6
75.0	216.9	243.8	271.5	300.1	323.7	348.0	368.4	389.0	417.0	408.2
78.0	173.2	201.2	229.3	257.2	283.1	308.4	329.2	349.9	376.4	368.3
81.0	130.6	160.6	189.4	218.5	245.5	270.8	292.5	313.3	338.5	329.6
84.0	91.73	121.9	152.3	182.6	210.1	234.7	257.4	277.2	302.3	294.0
87.0	54.24	86.16	116.7	148.4	176.3	201.1	223.7	242.3	266.9	258.9
90.0	25.78	62.10	98.17	131.4	161.3	184.6	204.6	217.0	232.4	225.9
93.0	24.56	59.62	94.86	127.3	156.6	179.2	198.7	210.2	220.2	216.9
96.0	24.17	58.47	92.92	124.5	152.9	174.8	193.6	204.6	214.1	211.0
99.0	23.62	57.36	91.13	122.0	149.7	170.9	189.0	199.6	208.7	205.7
102.0	22.74	55.89	89.16	119.3	145.3	167.0	184.5	194.8	203.7	200.8
105.0	21.98	53.35	86.93	116.4	141.7	162.8	179.9	189.9	198.6	195.7
108.0	19.62	51.88	83.59	113.2	137.8	158.4	175.1	184.8	193.4	190.8
111.0	19.07	50.35	79.76	109.6	133.5	153.5	169.8	179.3	187.9	185.1
114.0	17.20	47.68	76.46	104.8	128.9	148.3	164.1	173.4	181.9	179.1
117.0	15.77	43.97	74.29	98.88	124.0	142.7	157.9	167.1	175.6	173.0
120.0	14.49	41.78	71.01	94.73	117.6	136.9	151.6	160.4	168.9	166.2
123.0	11.96	37.08	66.91	89.93	110.7	130.7	143.9	153.5	161.9	159.4
126.0	10.09	33.57	61.95	86.15	102.9	123.7	137.0	146.3	154.6	151.9
129.0	9.090	30.35	57.68	81.69	98.39	116.0	129.7	138.6	146.9	143.2
132.0	8.183	26.43	52.89	76.17	93.14	106.4	122.3	130.8	138.9	135.6
135.0	7.277	23.49	46.46	69.85	87.35	97.96	112.9	122.7	130.7	127.5
138.0	6.384	20.94	42.73	64.07	81.56	93.24	103.8	114.4	122.3	118.9
141.0	5.868	18.99	36.68	56.42	74.70	86.21	93.59	105.9	113.6	110.6
144.0	5.297	17.01	31.47	49.46	66.62	79.13	85.53	95.88	104.7	101.7
147.0	4.944	14.95	27.16	44.15	58.02	72.28	78.42	85.63	95.72	92.89
150.0	4.686	12.82	23.45	37.04	50.92	61.77	70.68	75.56	86.50	83.81
153.0	4.389	10.72	20.48	30.64	43.23	53.83	60.19	65.57	75.40	73.42
156.0	3.998	8.617	17.36	25.94	35.26	44.58	53.47	56.76	60.26	63.67
159.0	3.239	7.054	14.20	21.51	28.48	36.68	42.08	48.79	50.26	54.38
162.0	3.215	5.864	10.79	16.94	22.77	27.78	33.16	38.96	45.40	45.31
165.0	3.799	4.900	7.853	12.66	16.87	21.74	25.12	28.65	37.95	35.12
168.0	4.084	3.976	5.890	8.829	11.85	15.18	17.93	21.18	18.09	26.56
171.0	4.405	3.123	4.392	6.018	8.061	9.837	11.97	13.18	13.29	17.76
174.0	4.809	3.907	3.053	3.897	4.980	6.105	7.013	8.072	7.791	10.32
177.0	5.422	4.783	4.270	3.841	3.298	2.998	3.838	4.344	4.740	5.401
180.0	6.151	6.101	5.952	5.754	5.244	4.888	4.013	3.409	2.782	2.751
G/C	200.0	210.0	220.0	230.0	240.0	250.0	260.0	270.0	280.0	290.0
0.0	1003	1002	1002	1001	999.7	999.3	998.7	998.7	997.5	997.3
3.0	1002	1002	1001	1000	998.7	998.6	997.6	996.8	996.9	996.3
6.0	1002	1001	999.2	997.1	995.5	994.3	993.7	992.6	992.2	992.4
9.0	1000	998.3	995.6	992.9	989.9	987.6	986.3	985.3	985.1	986.0
12.0	997.5	993.8	990.1	985.2	981.9	977.9	976.2	974.1	974.8	976.3
15.0	992.4	987.6	982.4	976.1	970.7	965.4	962.3	960.2	961.8	963.9
18.0	984.6	978.4	972.1	963.3	957.0	950.0	946.2	943.4	945.5	949.2
21.0	974.0	966.6	959.1	948.8	940.3	932.0	927.0	923.7	926.3	931.7
24.0	960.8	952.6	943.7	930.9	921.4	911.1	905.1	901.1	904.7	911.9
27.0	944.5	934.8	925.9	910.5	899.2	887.6	880.1	875.1	879.6	889.2
30.0	925.9	915.0	904.9	887.4	875.2	861.3	852.8	847.0	852.5	864.2
33.0	904.5	892.5	881.5	861.8	848.0	832.8	822.1	816.1	822.8	836.7
36.0	879.7	867.1	854.9	834.3	818.3	801.4	789.8	783.0	790.5	807.2
39.0	853.0	839.8	825.5	803.7	787.0	768.5	755.5	747.9	756.4	775.4
42.0	824.2	809.7	794.9	771.3	753.0	733.0	718.6	709.8	720.2	741.1
45.0	792.1	777.6	761.6	736.5	716.9	695.2	679.4	669.8	681.6	705.0
48.0	758.6	743.0	726.6	699.7	678.8	655.6	638.6	628.2	641.2	666.9
51.0	723.2	706.8	689.3	660.6	638.3	614.3	595.8	584.9	599.3	627.2
54.0	685.5	668.3	649.9	620.2	597.2	571.2	551.7	539.7	555.7	585.6
57.0	647.1	628.8	609.6	578.4	554.2	527.1	506.1	493.3	511.0	542.7
60.0	606.7	587.5	568.3	534.8	509.7	481.0	459.2	445.9	464.8	498.7
63.0	565.6	545.6	525.4	490.9	464.7	434.7	411.9	397.8	418.1	453.7
66.0	523.3	503.1	481.5	446.2	418.7	388.1	363.9	349.1	370.8	407.7

C Range: 0 - 360DEG
 C Interval: 10.0DEG
 Test Speed: HIGH
 Temperature:25.3DEG
 Operators:DAMIN
 Test Date:2020-09-08

γ Range: 0 - 180DEG
 γ Interval: 1.0DEG
 Test System:EVERFINE GO-2000B_V1 SYSTEM V2.0.291
 Humidity:65.0%
 Test Distance:8.190m [K=1.0000]
 Remarks:

Photometric Data Table [cd]

69.0	480.8	459.9	437.8	401.5	373.0	341.3	315.9	300.5	323.7	362.0
72.0	438.0	417.0	394.0	357.3	327.6	294.9	267.9	252.7	275.8	316.2
75.0	396.2	374.7	351.5	313.9	283.7	250.0	221.0	206.1	229.5	271.5
78.0	355.8	333.6	309.3	271.8	239.3	206.7	176.9	161.4	185.6	228.0
81.0	317.6	295.1	269.3	231.5	198.6	165.0	135.2	117.7	144.0	186.4
84.0	281.6	258.7	231.7	195.0	161.0	125.3	95.51	77.99	104.8	147.4
87.0	244.7	223.6	196.6	159.9	125.4	88.98	57.43	39.47	67.35	109.9
90.0	212.4	193.6	168.0	136.8	103.1	65.85	28.94	4.830	31.70	74.73
93.0	204.5	187.1	162.3	132.3	99.43	63.43	27.73	4.874	26.54	63.90
96.0	199.0	182.3	158.1	129.3	97.47	62.47	27.40	5.095	26.73	63.10
99.0	194.1	177.9	154.8	126.9	95.75	61.42	26.92	5.293	27.29	60.40
102.0	189.6	174.2	151.6	124.3	93.91	60.17	25.88	5.501	27.82	61.11
105.0	185.0	170.1	148.1	121.5	91.73	57.32	24.74	5.758	28.18	59.52
108.0	180.2	165.7	144.5	118.3	89.30	55.49	23.76	5.983	27.70	56.49
111.0	175.0	160.9	140.4	114.8	85.78	53.19	22.36	6.204	26.34	54.73
114.0	169.4	155.8	136.0	111.0	81.74	51.87	21.09	6.403	25.24	51.73
117.0	163.5	150.3	131.2	106.9	77.12	49.38	19.43	6.588	24.24	50.08
120.0	157.2	143.5	126.1	101.3	74.28	45.76	17.10	6.728	23.24	47.09
123.0	150.6	137.5	120.8	96.42	70.62	42.72	15.25	6.804	22.23	43.66
126.0	143.6	131.0	115.1	89.89	67.66	39.64	12.39	5.383	20.67	40.50
129.0	136.4	124.3	109.2	83.78	64.05	36.69	10.65	4.803	18.96	37.77
132.0	128.9	117.6	103.1	79.37	59.04	32.73	9.534	4.879	17.58	35.39
135.0	121.2	110.4	96.50	74.41	53.26	28.45	8.555	5.041	16.59	32.98
138.0	113.2	102.8	89.05	69.46	49.14	23.69	7.658	5.149	15.71	30.48
141.0	105.0	95.23	82.52	63.07	44.36	20.90	6.968	5.258	15.26	28.56
144.0	96.71	86.64	75.02	56.84	39.34	18.42	6.348	5.402	14.83	27.17
147.0	88.02	78.92	66.04	51.00	33.73	16.45	5.887	5.555	14.35	25.30
150.0	78.28	68.91	58.49	44.89	27.51	14.38	5.432	5.713	13.78	23.52
153.0	67.24	59.95	51.02	39.17	22.70	11.98	4.954	5.857	13.18	21.98
156.0	58.25	51.59	44.63	31.12	19.35	10.02	4.544	5.988	12.53	20.41
159.0	48.87	44.15	38.39	24.92	16.20	8.527	3.888	6.128	11.88	18.80
162.0	41.33	36.39	30.76	20.10	12.96	7.206	3.405	6.227	11.15	17.03
165.0	32.29	28.52	23.16	15.48	10.24	5.812	3.628	6.340	10.43	15.18
168.0	23.89	21.22	17.14	11.43	7.689	4.692	4.150	6.408	9.656	13.26
171.0	16.84	14.41	11.82	8.013	5.489	3.209	4.402	6.332	8.699	11.21
174.0	10.22	9.121	7.777	5.171	3.435	3.653	4.674	6.115	7.663	9.272
177.0	5.646	4.886	4.467	3.003	3.710	4.331	5.274	6.065	6.883	7.589
180.0	2.805	3.098	3.472	4.329	4.974	5.479	6.043	6.101	6.155	6.101
G/C	300.0	310.0	320.0	330.0	340.0	350.0				
0.0	996.5	996.2	996.2	995.9	995.5	994.9				
3.0	996.1	995.6	996.0	995.6	995.1	995.3				
6.0	992.8	993.5	994.7	994.6	995.5	995.3				
9.0	987.7	989.4	991.5	993.2	994.2	994.5				
12.0	979.8	983.2	987.2	990.2	992.1	992.7				
15.0	969.5	975.1	980.5	984.9	988.0	989.0				
18.0	957.0	964.4	972.4	977.9	982.1	982.6				
21.0	942.0	951.7	962.1	968.6	973.6	973.2				
24.0	924.2	936.4	948.4	956.4	962.1	961.4				
27.0	904.2	918.7	932.3	941.7	947.5	946.7				
30.0	882.1	898.5	913.9	923.9	930.7	929.0				
33.0	857.5	875.8	892.7	903.5	910.3	909.1				
36.0	830.1	850.7	869.0	881.0	888.0	885.4				
39.0	800.7	823.3	843.0	854.8	862.3	860.1				
42.0	769.1	792.8	814.0	826.6	834.6	832.1				
45.0	735.6	760.4	783.0	796.1	804.8	801.7				
48.0	699.3	726.0	749.6	763.6	773.0	769.3				
51.0	661.3	689.2	714.5	729.2	738.4	734.9				
54.0	622.0	651.0	677.3	692.2	702.5	698.6				
57.0	580.9	611.0	638.2	653.7	664.6	660.7				
60.0	538.3	569.6	597.6	614.0	625.3	621.7				
63.0	494.6	527.1	556.3	573.0	584.8	581.4				
66.0	449.9	483.3	513.5	531.1	543.5	539.9				
69.0	405.3	439.2	470.1	488.4	501.3	498.3				
72.0	359.9	395.3	426.8	445.5	459.1	456.4				
75.0	316.0	351.6	383.5	403.3	417.2	415.6				
78.0	271.9	308.9	341.3	361.9	376.9	376.2				
81.0	229.7	267.8	301.2	322.2	338.6	338.4				
84.0	190.9	229.8	261.9	285.8	301.8	302.1				
87.0	154.9	193.7	225.8	249.2	263.7	266.3				
90.0	119.8	158.0	190.5	214.2	229.0	231.6				
93.0	102.1	136.8	167.3	192.4	208.7	218.6				
96.0	99.57	133.0	162.0	186.3	202.2	212.4				
99.0	98.29	130.4	158.4	181.8	197.1	207.0				
102.0	96.03	128.4	155.3	177.8	192.5	202.1				

C Range: 0 - 360DEG
 C Interval: 10.0DEG
 Test Speed: HIGH
 Temperature: 25.3DEG
 Operators: DAMIN
 Test Date: 2020-09-08

γ Range: 0 - 180DEG
 γ Interval: 1.0DEG
 Test System: EVERFINE GO-2000B_V1 SYSTEM V2.0.291
 Humidity: 65.0%
 Test Distance: 8.190m [K=1.0000]
 Remarks:

Photometric Data Table [cd]

105.0	91.71	126.3	152.4	174.2	188.1	197.2
108.0	90.67	114.8	149.2	170.2	183.6	192.1
111.0	86.96	116.1	142.9	165.8	178.7	186.7
114.0	77.74	108.2	132.0	161.2	173.4	181.0
117.0	72.19	100.5	126.5	152.8	167.7	174.8
120.0	68.69	92.81	116.3	139.3	161.7	168.2
123.0	65.31	84.35	108.5	134.4	153.6	161.2
126.0	61.25	77.63	99.67	123.1	139.5	153.8
129.0	57.78	73.22	91.65	109.3	131.8	145.7
132.0	53.53	69.30	82.72	100.7	128.4	137.5
135.0	48.71	63.91	76.08	91.41	116.6	124.7
138.0	44.52	58.77	70.94	81.61	102.7	111.1
141.0	40.67	53.27	65.27	73.44	88.15	105.8
144.0	37.96	47.58	58.94	68.26	77.98	99.60
147.0	35.95	43.15	52.09	62.12	68.67	91.75
150.0	33.93	40.41	45.83	54.11	59.37	77.92
153.0	31.42	37.85	41.39	46.91	51.41	62.55
156.0	28.52	34.68	37.98	40.32	44.30	48.08
159.0	25.54	31.28	34.44	34.77	38.75	39.12
162.0	22.80	27.16	30.46	29.85	31.78	31.01
165.0	20.03	23.46	25.62	24.81	25.38	23.51
168.0	17.03	19.66	21.29	20.61	18.95	16.67
171.0	13.87	15.59	16.97	16.60	14.83	12.43
174.0	10.86	11.82	12.67	12.18	11.04	8.691
177.0	8.270	8.501	8.727	8.097	7.428	5.551
180.0	5.916	5.695	5.353	4.721	4.153	3.337

C Range: 0 - 360DEG
 C Interval: 10.0DEG
 Test Speed: HIGH
 Temperature: 25.3DEG
 Operators: DAMIN
 Test Date: 2020-09-08

γ Range: 0 - 180DEG
 γ Interval: 1.0DEG
 Test System: EVERFINE GO-2000B_V1 SYSTEM V2.0.291
 Humidity: 65.0%
 Test Distance: 8.190m [K=1.0000]
 Remarks: