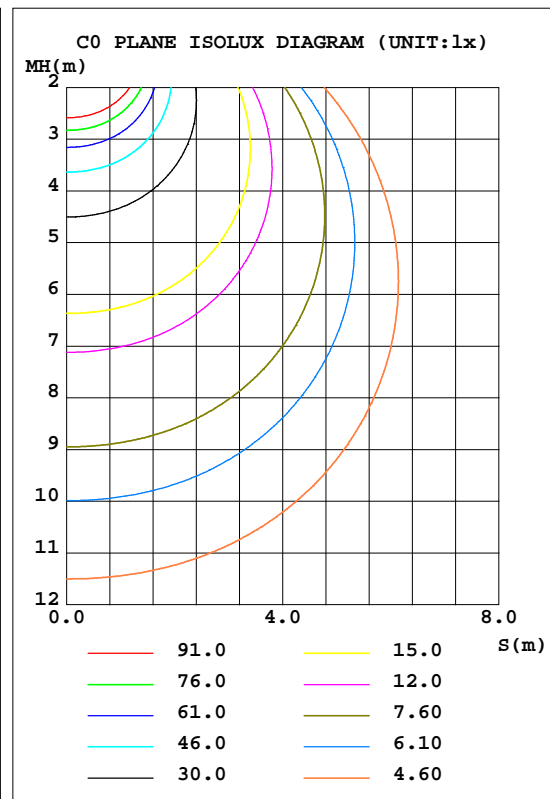
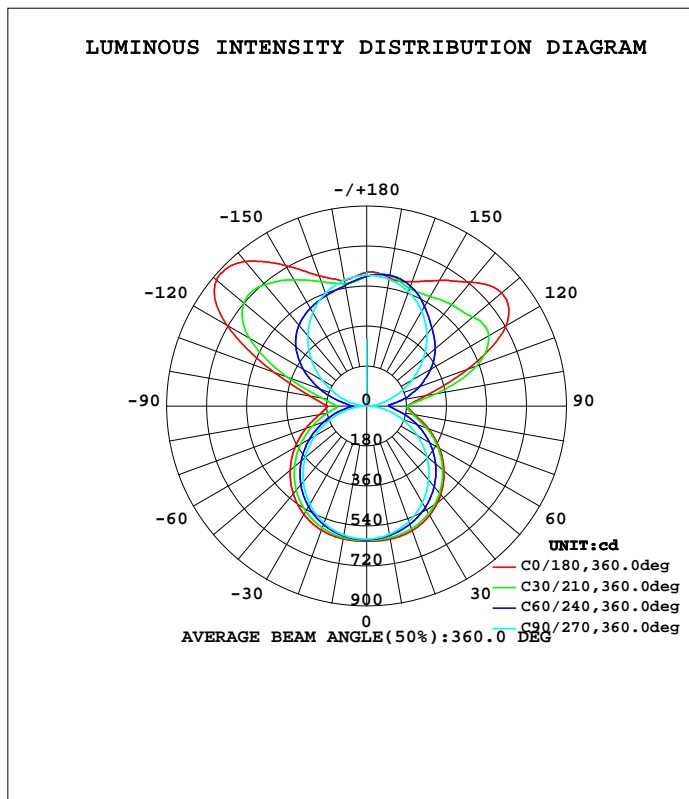


LUMINAIRE PHOTOMETRIC TEST REPORT

Test:U:0V I:0A P:0W PF:0 Lamp Flux:2345.06x2 lm		
NAME: ZE-41-I40AC	TYPE:	WEIGHT:
SPEC.:	DIM.: 1280*33*63	SERIAL No.:
MFR.: EVERFINE	SUR.:1280*33*8	PROTECTION ANGLE:

DATA OF LAMP		PHOTOMETRIC DATA			
MODEL	ZE-41-I40AC	I _{max} (cd)	888.4	S/MH(C0/180)	1.38
NOMINAL POWER(W)	110-277	LOR(%)	100.0	S/MH(C90/270)	1.27
RATED VOLTAGE(V)	120	TOTAL FLUX(lm)	4690.1	η UP, DN(C0-180)	27.9, 21.9
NOMINAL FLUX(lm)	2345.06	CIE CLASS	DIFFUSE	η UP, DN(C180-360)	27.2, 23.0
LAMPS INSIDE	2	η up(%)	55.1	CIBSE SHR NOM	1.50
TEST VOLTAGE(V)	120	η down(%)	44.9	CIBSE SHR MAX	1.55



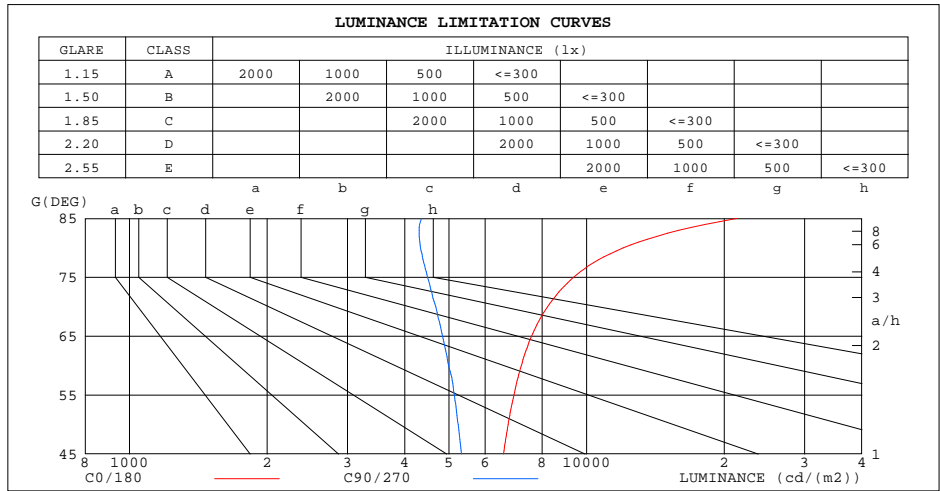
C Range: 0 - 360DEG
 C Interval: 5.0DEG
 Test Speed: MEDIUM
 Temperature: 25.3DEG
 Operators: DAMIN
 Test Date: 2020-09-15

γ Range: 0 - 180DEG
 γ Interval: 0.5DEG
 Test System: EVERFINE GO-2000_V1 SYSTEM V2.0.291
 Humidity: 65.0%
 Test Distance: 10.000m [K=1.0000]
 Remarks:

ZONAL FLUX DIAGRAM
AND LUMINANCE LIMITATION CURVES

ZONAL FLUX DIAGRAM:

γ	C0	C45	C90	C135	C180	C225	C270	C315	γ	φ zone	φ total	lum,lamp
5	608.9	601.0	595.1	592.8	608.3	602.2	597.0	595.9	0- 5	14.33	14.33	0.31,0.31
10	608.3	596.5	586.2	585.4	607.1	597.6	590.0	592.7	5- 10	42.67	57.00	1.22,1.22
15	604.7	589.4	572.2	573.1	603.3	588.9	577.7	587.2	10- 15	69.98	127.0	2.71,2.71
20	597.0	579.0	553.3	556.6	594.8	575.7	560.2	579.2	15- 20	95.49	222.5	4.74,4.74
25	584.7	564.7	530.0	535.5	582.1	557.6	537.9	567.8	20- 25	118.4	340.9	7.27,7.27
30	567.3	546.2	501.7	510.0	564.2	535.1	510.8	552.7	25- 30	138.0	478.9	10.2,10.2
35	545.4	523.5	469.8	480.7	541.8	508.2	479.5	533.4	30- 35	153.7	632.5	13.5,13.5
40	519.1	496.7	434.2	447.7	514.9	477.2	443.8	509.8	35- 40	164.9	797.4	17,17
45	488.6	466.2	395.2	411.4	484.3	442.2	404.8	482.2	40- 45	171.3	968.7	20.7,20.7
50	454.7	432.0	353.5	372.5	450.1	404.1	362.2	450.6	45- 50	172.8	1142	24.3,24.3
55	417.5	394.7	309.4	331.3	412.8	363.3	317.0	415.6	50- 55	169.4	1311	28,28
60	377.8	354.7	261.9	288.6	373.1	320.0	269.7	377.2	55- 60	161.3	1472	31.4,31.4
65	336.2	312.8	214.9	244.6	331.6	275.6	220.9	336.3	60- 65	148.9	1621	34.6,34.6
70	295.1	268.9	168.0	203.1	290.9	230.4	172.2	293.7	65- 70	133.0	1754	37.4,37.4
75	254.3	225.5	121.9	163.7	249.7	188.8	124.1	249.4	70- 75	114.6	1869	39.8,39.8
80	219.1	187.7	78.98	125.8	214.0	148.9	79.86	208.3	75- 80	95.32	1964	41.9,41.9
85	195.1	162.3	39.84	96.72	190.5	113.2	39.28	179.1	80- 85	77.64	2042	43.5,43.5
90	182.1	152.9	3.249	106.0	179.3	106.1	3.114	164.6	85- 90	65.72	2107	44.9,44.9
95	213.5	182.1	19.38	134.5	209.1	127.1	20.20	173.6	90- 95	67.75	2175	46.4,46.4
100	270.3	251.6	51.50	189.6	257.4	171.7	51.24	235.3	95-100	86.54	2262	48.2,48.2
105	359.5	324.3	91.82	275.5	330.0	246.3	90.15	306.9	100-105	116.4	2378	50.7,50.7
110	481.1	384.8	137.2	369.3	441.5	333.4	134.2	368.6	105-110	152.2	2530	53.9,53.9
115	614.4	428.3	186.7	450.4	579.8	414.1	180.9	421.2	110-115	187.6	2718	57.9,57.9
120	723.9	456.2	235.9	511.8	724.3	478.4	229.2	456.1	115-120	216.1	2934	62.6,62.6
125	780.0	478.0	285.1	555.4	832.8	526.7	277.5	483.0	120-125	232.9	3167	67.5,67.5
130	792.6	496.7	333.3	581.5	883.2	559.3	324.7	502.5	125-130	236.5	3403	72.6,72.6
135	771.5	510.0	379.2	594.0	882.8	576.6	369.8	516.9	130-135	228.7	3632	77.4,77.4
140	728.8	519.6	421.9	599.2	849.9	586.0	412.3	528.5	135-140	213.0	3845	82,82
145	686.8	525.7	461.0	595.0	793.5	588.2	450.9	535.3	140-145	192.6	4038	86.1,86.1
150	653.9	534.7	495.4	585.0	730.4	582.0	485.8	541.5	145-150	169.6	4207	89.7,89.7
155	621.3	549.4	524.7	572.9	671.3	571.5	516.3	552.0	150-155	144.9	4352	92.8,92.8
160	597.4	569.9	548.5	563.6	624.1	561.9	541.5	568.0	155-160	119.6	4472	95.3,95.3
165	583.5	590.1	567.1	558.6	593.5	555.4	561.7	588.9	160-165	94.14	4566	97.4,97.4
170	587.8	600.2	579.9	563.6	574.4	554.5	576.4	603.4	165-170	68.33	4634	98.8,98.8
175	601.8	596.7	587.2	580.9	586.8	565.9	585.5	607.6	170-175	41.74	4676	99.7,99.7
180	599.7	599.7	599.7	599.7	599.7	599.7	599.7	599.7	175-180	14.10	4690	100,100
DEG	LUMINOUS INTENSITY:cd									UNIT:lm		



LUMINANCE cd/(m2)		
G(DEG)	C0/180	C90/270
85	21322	4354
80	12018	4331
75	9358	4485
70	8217	4678
65	7577	4844
60	7197	4989
55	6932	5137
50	6737	5237
45	6580	5322

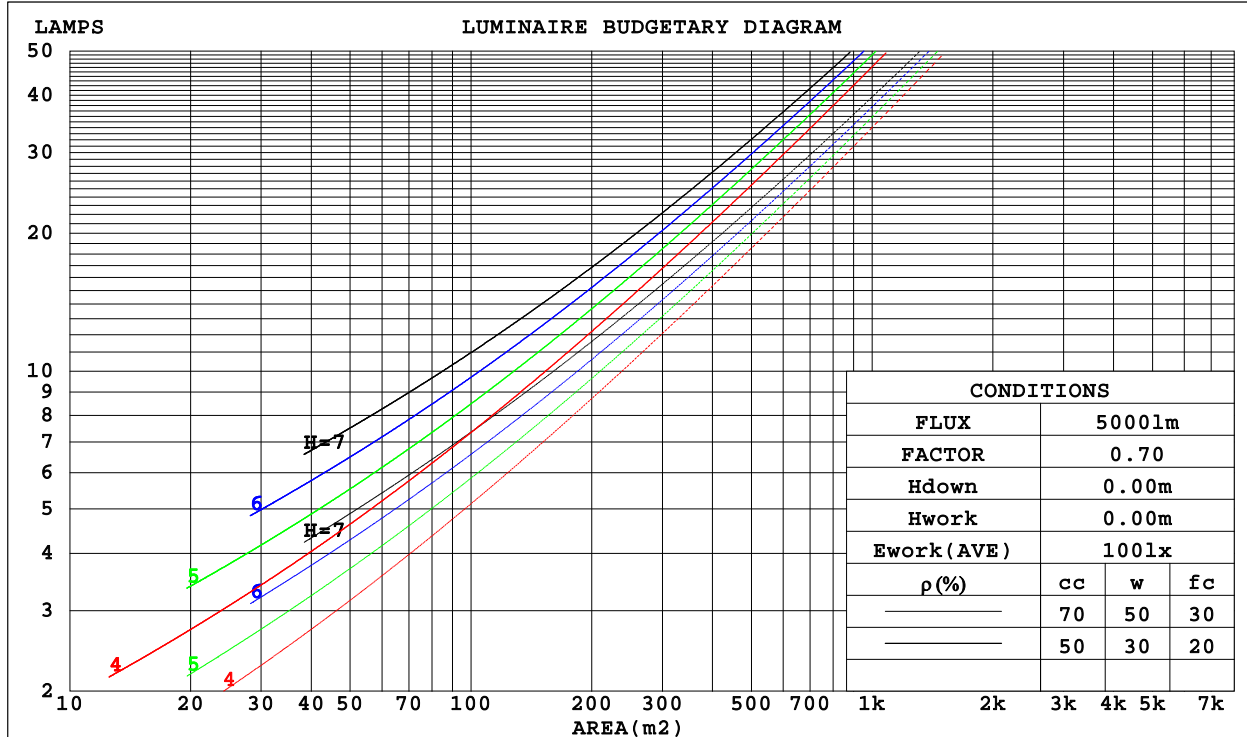
C Range: 0 - 360DEG
C Interval: 5.0DEG
Test Speed: MEDIUM
Temperature:25.3DEG
Operators:DAMIN
Test Date:2020-09-15

γ Range: 0 - 180DEG
γ Interval: 0.5DEG
Test System:EVERFINE GO-2000_V1 SYSTEM V2.0.291
Humidity:65.0%
Test Distance:10.000m [K=1.0000]
Remarks:

CU AND LUMINAIRE BUDGETARY ESTIMATE DIAGRAM

Test:U:0V I:0A P:0W PF:0 Lamp Flux:2345.06x2 lm		
NAME: ZE-41-I40AC	TYPE:	WEIGHT:
SPEC.:	DIM.: 1280*33*63	SERIAL No.:
MFR.: EVERFINE	SUR.:1280*33*8	PROTECTION ANGLE:

ρ_{cc}	80%			70%			50%			30%			10%			0
ρ_w	50%	30%	10%	50%	30%	10%	50%	30%	10%	50%	30%	10%	50%	30%	10%	0
ρ_{fc}	20%			20%			20%			20%			20%			0
RCR	RCR:Room Cavity Ratio						Coefficients of Utilization(CU)									
0.0	1.06	1.06	1.06	.97	.97	.97	.81	.81	.81	.65	.65	.65	.51	.51	.51	.45
1.0	.91	.86	.82	.83	.79	.76	.69	.66	.63	.56	.54	.52	.43	.42	.41	.35
2.0	.78	.72	.66	.72	.66	.61	.59	.55	.51	.48	.45	.42	.37	.35	.33	.28
3.0	.68	.61	.54	.63	.56	.50	.52	.47	.43	.42	.38	.35	.33	.30	.28	.23
4.0	.60	.52	.46	.55	.48	.42	.46	.40	.36	.37	.33	.30	.29	.26	.24	.20
5.0	.53	.45	.39	.49	.42	.36	.41	.35	.31	.33	.29	.25	.26	.23	.20	.17
6.0	.48	.39	.33	.44	.36	.31	.37	.31	.27	.30	.25	.22	.23	.20	.18	.15
7.0	.43	.35	.29	.40	.32	.27	.33	.27	.23	.27	.23	.19	.21	.18	.16	.13
8.0	.39	.31	.25	.36	.29	.24	.30	.24	.20	.25	.20	.17	.20	.16	.14	.11
9.0	.35	.28	.23	.33	.26	.21	.27	.22	.18	.23	.18	.15	.18	.15	.12	.10
10.0	.32	.25	.20	.30	.23	.19	.25	.20	.16	.21	.17	.14	.17	.13	.11	.09



C Range: 0 - 360DEG
 C Interval: 5.0DEG
 Test Speed: MEDIUM
 Temperature:25.3DEG
 Operators:DAMIN
 Test Date:2020-09-15

γ Range: 0 - 180DEG
 γ Interval: 0.5DEG
 Test System:EVERFINE GO-2000_V1 SYSTEM V2.0.291
 Humidity:65.0%
 Test Distance:10.000m [K=1.0000]
 Remarks:

WEC AND CCEC

Test:U:0V I:0A P:0W PF:0 Lamp Flux:2345.06x2 lm		
NAME: ZE-41-I40AC	TYPE:	WEIGHT:
SPEC.:	DIM.: 1280*33*63	SERIAL No.:
MFR.: EVERFINE	SUR.:1280*33*8	PROTECTION ANGLE:

pcc	80%			70%			50%			30%			10%			0
pw	50%	30%	10%	50%	30%	10%	50%	30%	10%	50%	30%	10%	50%	30%	10%	0
pfc	20%			20%			20%			20%			20%			0
RCR	RCR:Room Cavity Ratio						Wall Exitance Coefficients(WEC)									
0.0																
1.0	.312	.178	.056	.289	.165	.052	.244	.140	.045	.203	.117	.038	.166	.096	.031	
2.0	.280	.154	.047	.259	.143	.044	.218	.121	.038	.181	.102	.032	.146	.083	.026	
3.0	.255	.136	.041	.235	.126	.038	.198	.107	.033	.164	.090	.027	.132	.073	.023	
4.0	.233	.121	.036	.215	.112	.033	.181	.096	.029	.149	.080	.024	.120	.065	.020	
5.0	.214	.109	.032	.198	.102	.030	.166	.087	.025	.137	.072	.022	.110	.059	.018	
6.0	.198	.099	.028	.183	.092	.027	.154	.079	.023	.127	.066	.019	.101	.053	.016	
7.0	.184	.091	.026	.170	.085	.024	.143	.072	.021	.118	.060	.018	.094	.049	.014	
8.0	.172	.084	.024	.159	.078	.022	.134	.067	.019	.110	.056	.016	.088	.045	.013	
9.0	.161	.078	.022	.149	.072	.020	.125	.062	.018	.103	.052	.015	.082	.042	.012	
10.0	.151	.072	.020	.140	.067	.019	.118	.058	.016	.097	.048	.014	.077	.039	.011	

pcc	80%			70%			50%			30%			10%			0
pw	50%	30%	10%	50%	30%	10%	50%	30%	10%	50%	30%	10%	50%	30%	10%	0
pfc	20%			20%			20%			20%			20%			0
RCR	RCR:Room Cavity Ratio						Ceiling Cavity Exitance Coefficients(CCEC)									
0.0	.610	.610	.610	.521	.521	.521	.356	.356	.356	.204	.204	.204	.065	.065	.065	
1.0	.604	.579	.557	.516	.497	.480	.353	.342	.332	.203	.198	.193	.065	.064	.062	
2.0	.597	.558	.525	.511	.480	.454	.350	.332	.317	.202	.193	.186	.065	.063	.060	
3.0	.590	.542	.505	.506	.468	.437	.347	.325	.307	.200	.190	.181	.064	.062	.059	
4.0	.583	.531	.491	.500	.459	.426	.344	.320	.300	.199	.187	.178	.064	.061	.058	
5.0	.576	.522	.481	.495	.451	.419	.341	.315	.296	.197	.185	.175	.064	.060	.058	
6.0	.570	.514	.474	.490	.445	.413	.338	.312	.292	.196	.183	.174	.063	.060	.057	
7.0	.564	.508	.469	.485	.440	.409	.335	.309	.290	.195	.182	.172	.063	.060	.057	
8.0	.558	.503	.465	.480	.436	.406	.332	.306	.288	.193	.181	.171	.063	.059	.057	
9.0	.553	.499	.462	.476	.433	.403	.330	.304	.286	.192	.180	.171	.062	.059	.057	
10.0	.547	.495	.460	.472	.430	.401	.327	.302	.285	.191	.179	.170	.062	.059	.056	

C Range: 0 - 360DEG
 C Interval: 5.0DEG
 Test Speed: MEDIUM
 Temperature:25.3DEG
 Operators:DAMIN
 Test Date:2020-09-15

γ Range: 0 - 180DEG
 γ Interval: 0.5DEG
 Test System:EVERFINE GO-2000_V1 SYSTEM V2.0.291
 Humidity:65.0%
 Test Distance:10.000m [K=1.0000]
 Remarks:

UGR(Unified Glare Rating) Table

Test:U:0V I:0A P:0W PF:0 Lamp Flux:2345.06x2 lm										
NAME: ZE-41-I40AC					TYPE:			WEIGHT:		
SPEC.:					DIM.: 1280*33*63			SERIAL No.:		
MFR.: EVERFINE					SUR.:1280*33*8			PROTECTION ANGLE:		
ceiling/cavity	0.7	0.7	0.5	0.5	0.3	0.7	0.7	0.5	0.5	0.3
walls	0.5	0.3	0.5	0.3	0.3	0.5	0.3	0.5	0.3	0.3
working plane	0.2	0.2	0.2	0.2	0.2	0.2	0.2	0.2	0.2	0.2
Room dimensions	Viewed crosswise					Viewed endwise				
x = 2H y = 2H	16.3	17.2	17.2	18.1	19.3	14.9	15.8	15.8	16.7	17.9
3H	18.4	19.2	19.3	20.2	21.4	16.3	17.2	17.3	18.1	19.3
4H	19.5	20.3	20.4	21.2	22.5	16.9	17.7	17.9	18.7	19.9
6H	20.7	21.4	21.7	22.4	23.7	17.4	18.1	18.3	19.1	20.3
8H	21.4	22.1	22.4	23.1	24.3	17.5	18.2	18.5	19.2	20.5
12H	22.2	22.9	23.2	23.8	25.1	17.6	18.3	18.6	19.3	20.6
4H 2H	16.8	17.6	17.7	18.5	19.8	15.8	16.6	16.7	17.5	18.7
3H	19.1	19.8	20.1	20.8	22.1	17.5	18.2	18.5	19.1	20.4
4H	20.4	21.0	21.4	22.0	23.3	18.3	18.9	19.3	19.9	21.2
6H	21.8	22.3	22.8	23.3	24.7	18.9	19.4	19.9	20.4	21.8
8H	22.6	23.1	23.6	24.1	25.5	19.1	19.6	20.1	20.6	22.0
12H	23.6	24.0	24.6	25.0	26.4	19.3	19.7	20.3	20.7	22.1
8H 4H	20.7	21.2	21.7	22.2	23.5	19.0	19.5	20.0	20.5	21.8
6H	22.4	22.8	23.4	23.8	25.2	19.9	20.3	21.0	21.4	22.7
8H	23.4	23.7	24.4	24.8	26.2	20.3	20.7	21.4	21.7	23.1
12H	24.6	24.9	25.7	26.0	27.4	20.7	21.0	21.7	22.0	23.4
12H 4H	20.7	21.1	21.7	22.2	23.5	19.1	19.6	20.2	20.6	22.0
6H	22.5	22.8	23.5	23.9	25.3	20.3	20.6	21.3	21.7	23.1
8H	23.6	23.9	24.7	25.0	26.4	20.8	21.2	21.9	22.2	23.6
Variations with the observer position at spacings:										
S = 1.0H	+ 0.1 / - 0.1					+ 0.1 / - 0.1				
1.5H	+ 0.2 / - 0.3					+ 0.2 / - 0.3				
2.0H	+ 0.2 / - 0.4					+ 0.2 / - 0.4				

CIE Pub.117 Corrected 4690 lm Total Lamp Luminous Flux.(8log(F/F0) = 5.4)

C Range: 0 - 360DEG
 C Interval: 5.0DEG
 Test Speed: MEDIUM
 Temperature:25.3DEG
 Operators:DAMIN
 Test Date:2020-09-15

γ Range: 0 - 180DEG
 γ Interval: 0.5DEG
 Test System:EVERFINE GO-2000_V1 SYSTEM V2.0.291
 Humidity:65.0%
 Test Distance:10.000m [K=1.0000]
 Remarks:

UTILIZATION FACTORS TABLE

Test:U:0V I:0A P:0W PF:0 Lamp Flux:2345.06x2 lm		
NAME: ZE-41-I40AC	TYPE:	WEIGHT:
SPEC.:	DIM.: 1280*33*63	SERIAL No.:
MFR.: EVERFINE	SUR.:1280*33*8	PROTECTION ANGLE:

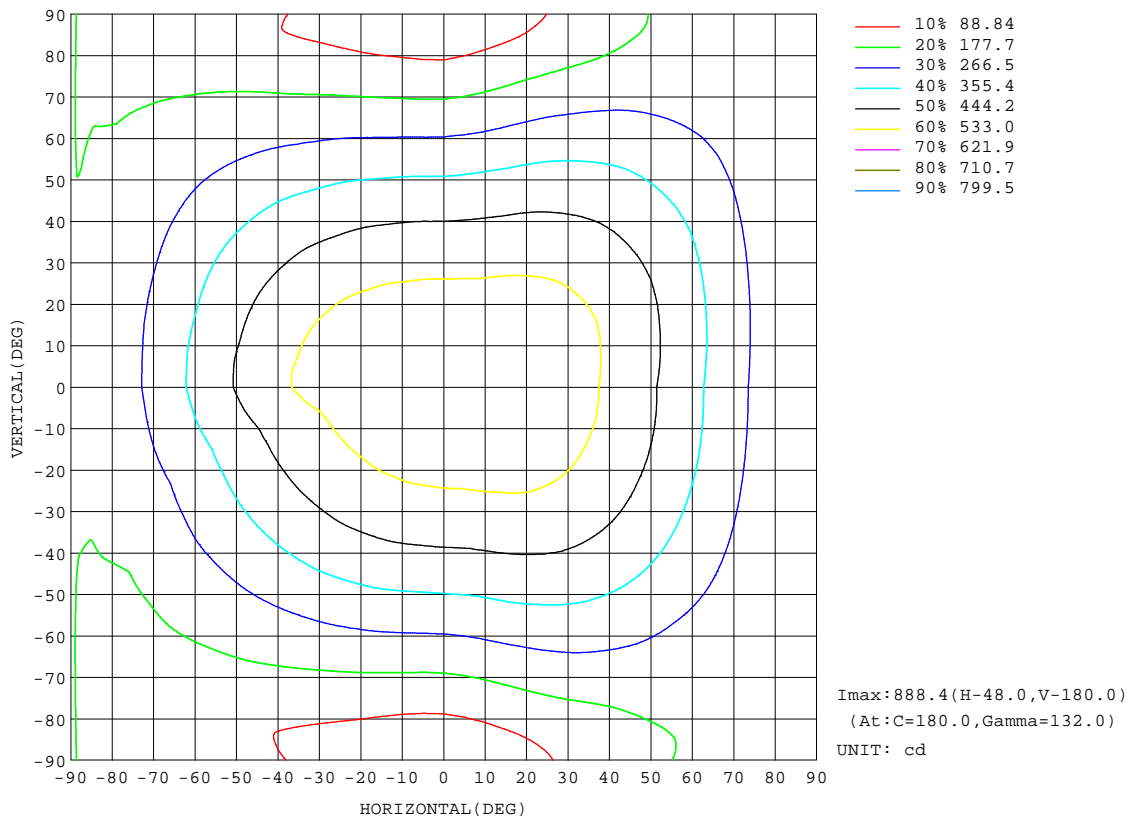
REFLECTANCE										
Ceiling	0.8	0.8	0.8	0.7	0.7	0.7	0.5	0.5	0.5	0
Walls	0.7	0.5	0.3	0.7	0.5	0.3	0.7	0.5	0.3	0
Working plane	0.2	0.2	0.2	0.2	0.2	0.2	0.2	0.2	0.2	0
ROOM INDEX	UTILIZATION FACTORS(PERCENT) k(RI) x RCR = 5									
k = 0.60	40	29	23	38	28	22	33	25	20	12
0.80	50	37	30	46	35	29	40	31	26	16
1.00	57	45	37	53	42	35	46	38	31	19
1.25	64	52	44	59	49	42	51	43	37	22
1.50	69	58	50	64	54	47	54	47	41	25
2.00	77	66	59	71	62	55	59	53	48	28
2.50	81	72	64	75	67	60	63	57	52	30
3.00	85	76	69	78	71	65	65	60	55	32
4.00	90	82	76	82	76	71	69	64	60	35
5.00	92	86	81	85	79	75	71	67	63	36
ROOM INDEX	UF(total)									Direct
According to DIN EN 13032-2 2004			Suspended				SHRNOM = 1.25			

C Range: 0 - 360DEG
 C Interval: 5.0DEG
 Test Speed: MEDIUM
 Temperature:25.3DEG
 Operators:DAMIN
 Test Date:2020-09-15

γ Range: 0 - 180DEG
 γ Interval: 0.5DEG
 Test System:EVERFINE GO-2000_V1 SYSTEM V2.0.291
 Humidity:65.0%
 Test Distance:10.000m [K=1.0000]
 Remarks:

ISOCANDELA DIAGRAM

Test:U:0V I:0A P:0W PF:0 Lamp Flux:2345.06x2 lm		
NAME: ZE-41-I40AC	TYPE:	WEIGHT:
SPEC.:	DIM.: 1280*33*63	SERIAL No.:
MFR.: EVERFINE	SUR.:1280*33*8	PROTECTION ANGLE:



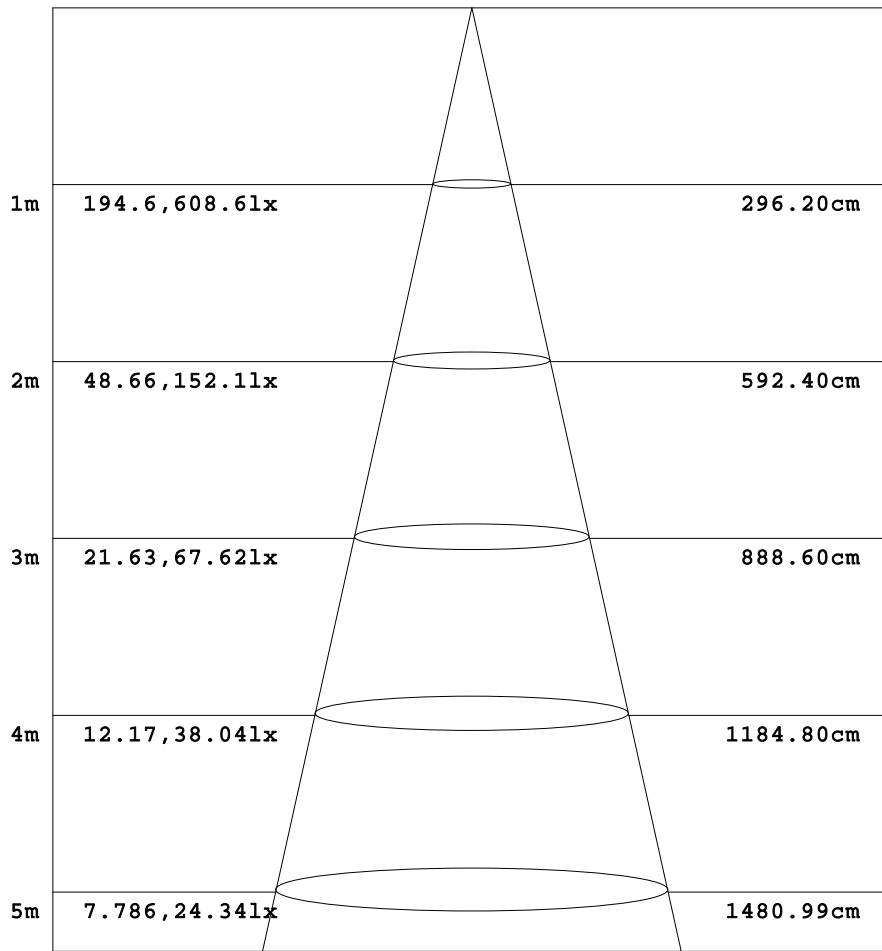
C Range: 0 - 360DEG
 C Interval: 5.0DEG
 Test Speed: MEDIUM
 Temperature:25.3DEG
 Operators:DAMIN
 Test Date:2020-09-15

γ Range: 0 - 180DEG
 γ Interval: 0.5DEG
 Test System:EVERFINE GO-2000_V1 SYSTEM V2.0.291
 Humidity:65.0%
 Test Distance:10.000m [K=1.0000]
 Remarks:

AAI Figure

Test:U:0V I:0A P:0W PF:0 Lamp Flux:2345.06x2 lm		
NAME: ZE-41-I40AC	TYPE:	WEIGHT:
SPEC.:	DIM.: 1280*33*63	SERIAL No.:
MFR.: EVERFINE	SUR.:1280*33*8	PROTECTION ANGLE:

Flux out:1344 lm



Height Eavg, Emax Angle:111.94deg Diameter

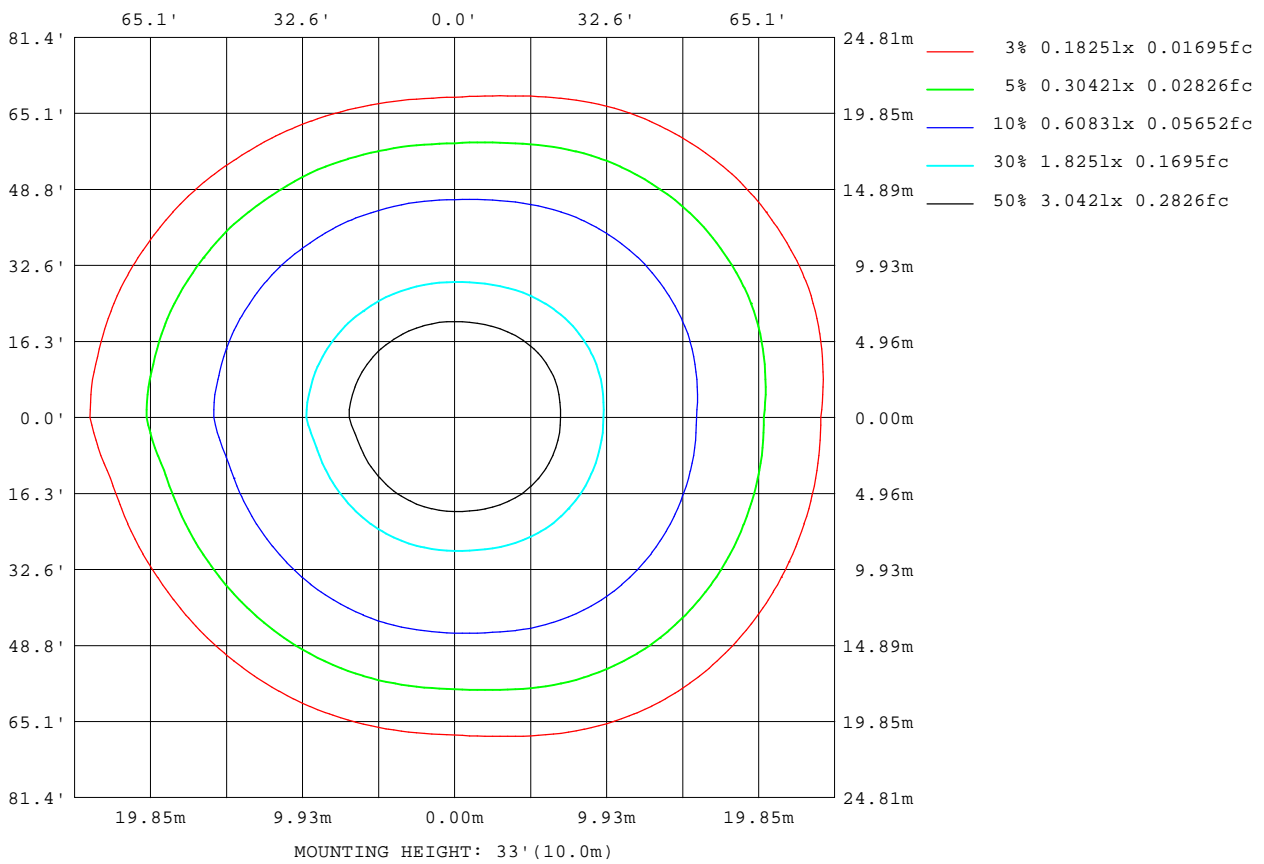
Note:The Curves indicate the illuminated area and the average illumination when the luminaire is at different distance.

C Range: 0 - 360DEG
 C Interval: 5.0DEG
 Test Speed: MEDIUM
 Temperature:25.3DEG
 Operators:DAMIN
 Test Date:2020-09-15

γ Range: 0 - 180DEG
 γ Interval: 0.5DEG
 Test System:EVERFINE GO-2000_V1 SYSTEM V2.0.291
 Humidity:65.0%
 Test Distance:10.000m [K=1.0000]
 Remarks:

ISOLUX DIAGRAM

Test:U:0V I:0A P:0W PF:0 Lamp Flux:2345.06x2 lm		
NAME: ZE-41-I40AC	TYPE:	WEIGHT:
SPEC.:	DIM.: 1280*33*63	SERIAL No.:
MFR.: EVERFINE	SUR.:1280*33*8	PROTECTION ANGLE:



C Range: 0 - 360DEG
 C Interval: 5.0DEG
 Test Speed: MEDIUM
 Temperature:25.3DEG
 Operators:DAMIN
 Test Date:2020-09-15

γ Range: 0 - 180DEG
 γ Interval: 0.5DEG
 Test System:EVERFINE GO-2000_V1 SYSTEM V2.0.291
 Humidity:65.0%
 Test Distance:10.000m [K=1.0000]
 Remarks:

LED Avg.L Report

Test:U:0V I:0A P:0W PF:0 Lamp Flux:2345.06x2 lm		
NAME: ZE-41-I40AC	TYPE:	WEIGHT:
SPEC.:	DIM.: 1280*33*63	SERIAL No.:
MFR.: EVERFINE	SUR.:1280*33*8	PROTECTION ANGLE:

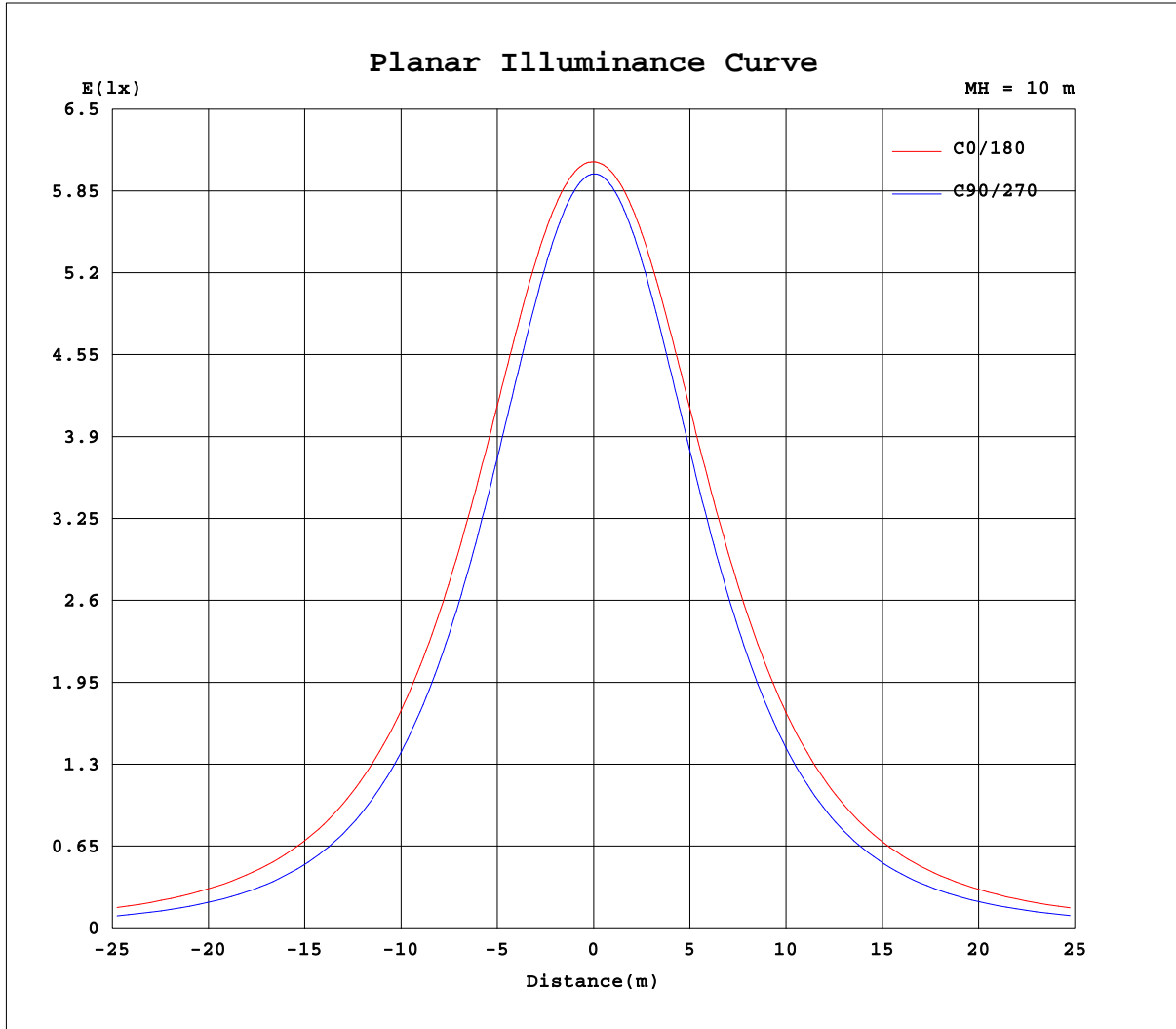
AvgL	cd/m2
L_0~180(65)av	7525
L_0~180(75)av	9273
L_0~180(85)av	21068
L_90~270(65)av	4911
L_90~270(75)av	4526
L_90~270(85)av	4323
L_45(65)av	6587
L_45(75)av	7612
L_45(85)av	15059

Standard: GB/T 29293-2012

C Range: 0 - 360DEG
C Interval: 5.0DEG
Test Speed: MEDIUM
Temperature:25.3DEG
Operators:DAMIN
Test Date:2020-09-15

γ Range: 0 - 180DEG
 γ Interval: 0.5DEG
Test System:EVERFINE GO-2000_V1 SYSTEM V2.0.291
Humidity:65.0%
Test Distance:10.000m [K=1.0000]
Remarks:

Planar Illuminance Curve



C Range: 0 - 360DEG
 C Interval: 5.0DEG
 Test Speed: MEDIUM
 Temperature: 25.3DEG
 Operators: DAMIN
 Test Date: 2020-09-15

γ Range: 0 - 180DEG
 γ Interval: 0.5DEG
 Test System: EVERFINE GO-2000_V1 SYSTEM V2.0.291
 Humidity: 65.0%
 Test Distance: 10.000m [K=1.0000]
 Remarks:

LUMINOUS DISTRIBUTION INTENSITY DATA

Test:U:0V I:0A P:0W PF:0 Lamp Flux:2345.06x2 lm		
NAME: ZE-41-I40AC	TYPE:	WEIGHT:
SPEC.:	DIM.: 1280*33*63	SERIAL No.:
MFR.: EVERFINE	SUR.:1280*33*8	PROTECTION ANGLE:

Table--1

UNIT: cd

C(DEG) γ (DEG)	0	5	10	15	20	25	30	35	40	45	50	55	60	65	70	75	80	85	90
0	608	608	607	607	606	605	605	604	604	603	603	602	602	601	601	600	600	599	599
5	609	608	607	606	606	605	604	603	602	601	600	599	599	598	597	597	596	596	595
10	608	608	607	605	604	603	602	600	598	597	595	593	592	591	590	588	587	587	586
15	605	604	603	602	600	599	597	594	592	589	587	584	581	579	577	575	574	573	572
20	597	596	596	594	592	591	588	586	582	579	575	571	567	564	560	558	555	554	553
25	585	584	583	582	580	578	576	573	569	565	560	555	549	544	540	536	532	531	530
30	567	567	566	565	563	561	558	555	551	546	541	534	528	521	515	510	505	503	502
35	545	545	545	543	541	539	537	533	528	524	518	510	502	494	487	480	474	471	470
40	519	519	519	517	515	513	511	507	502	497	491	482	473	464	456	447	440	436	434
45	489	489	488	487	485	483	481	477	472	466	459	450	441	431	421	411	402	397	395
50	455	455	455	453	451	449	447	443	438	432	425	416	406	395	384	372	362	356	353
55	417	418	418	416	414	412	410	406	401	395	387	378	367	356	344	331	320	313	309
60	378	378	378	377	375	373	370	366	361	355	347	337	326	314	302	288	275	267	262
65	336	337	337	335	333	331	328	324	319	313	305	295	283	270	257	243	230	221	215
70	295	296	295	294	291	289	286	282	276	269	260	251	240	227	213	198	184	174	168
75	254	254	254	253	251	247	243	238	233	226	217	207	196	183	169	153	139	128	122
80	219	221	222	222	220	216	210	204	197	188	177	166	154	141	126	111	97.0	86.0	79.0
85	195	199	201	201	200	195	188	182	174	162	149	135	121	105	88.8	72.9	58.7	47.2	39.8
90	182	189	194	196	196	192	185	178	167	153	136	119	102	83.6	65.1	45.9	28.2	12.5	3.25
95	214	223	230	235	236	232	225	216	203	182	158	137	116	96.2	77.5	59.2	42.8	28.0	19.4
100	270	287	300	311	317	318	313	302	283	252	217	187	161	136	114	92.8	74.7	59.9	51.5
105	360	384	404	421	432	432	423	401	369	324	277	239	205	177	154	132	114	99.8	91.8
110	481	510	531	548	554	546	524	487	439	385	331	288	252	220	194	173	157	144	137
115	614	640	655	662	656	632	595	545	488	428	372	327	290	260	236	216	202	192	187
120	724	736	738	730	711	678	634	574	510	456	408	368	333	302	278	262	251	242	236
125	780	781	773	757	730	691	642	585	527	478	435	400	370	341	318	309	305	295	285
130	793	785	771	750	720	675	625	579	536	497	461	430	403	377	358	355	355	345	333
135	771	758	739	716	686	647	606	572	541	510	481	454	431	412	400	401	403	392	379
140	729	715	697	673	647	622	596	570	544	520	496	475	457	447	442	444	445	435	422
145	687	679	665	642	618	600	584	564	544	526	510	497	488	485	485	486	485	474	461
150	654	641	627	610	593	582	571	558	546	535	526	522	520	521	522	521	517	507	495
155	621	604	591	582	575	569	563	558	553	549	548	549	552	552	551	548	544	535	525
160	597	582	571	568	568	566	564	566	568	570	572	574	576	575	573	569	564	556	549
165	584	574	569	571	576	579	581	585	589	590	591	592	592	590	587	583	579	573	567
170	588	586	586	589	592	594	597	599	600	600	600	599	598	596	593	590	587	584	580
175	602	597	595	596	597	598	598	598	597	597	596	596	595	594	592	591	590	589	587
180	600	600	600	600	600	600	600	600	600	600	600	600	600	600	600	600	600	600	600

C Range: 0 - 360DEG
 C Interval: 5.0DEG
 Test Speed: MEDIUM
 Temperature:25.3DEG
 Operators:DAMIN
 Test Date:2020-09-15

γ Range: 0 - 180DEG
 γ Interval: 0.5DEG
 Test System:EVERFINE GO-2000_V1 SYSTEM V2.0.291
 Humidity:65.0%
 Test Distance:10.000m [K=1.0000]
 Remarks:

LUMINOUS DISTRIBUTION INTENSITY DATA

Test:U:0V I:0A P:0W PF:0 Lamp Flux:2345.06x2 lm		
NAME: ZE-41-I40AC	TYPE:	WEIGHT:
SPEC.:	DIM.: 1280*33*63	SERIAL No.:
MFR.: EVERFINE	SUR.:1280*33*8	PROTECTION ANGLE:

Table--2

UNIT: cd

C(DEG) γ (DEG)	95	100	105	110	115	120	125	130	135	140	145	150	155	160	165	170	175	180	185
0	598	598	598	597	597	597	596	596	596	596	596	596	596	595	595	595	602	608	609
5	595	594	594	593	593	593	593	593	593	593	593	593	593	594	593	595	602	608	609
10	586	585	585	585	585	585	585	585	585	586	586	587	588	589	589	591	599	607	608
15	571	571	571	571	571	571	572	573	573	574	575	576	578	579	581	584	594	603	604
20	552	552	552	553	553	553	554	556	557	558	559	561	563	566	568	572	584	595	595
25	529	529	529	530	531	531	533	534	535	537	539	542	544	547	550	556	570	582	582
30	501	501	502	503	504	505	506	508	510	512	514	517	521	524	528	535	550	564	565
35	469	469	470	472	473	474	476	479	481	483	486	489	493	497	502	510	527	542	542
40	433	433	435	437	439	440	443	446	448	450	454	458	462	467	472	481	499	515	515
45	394	395	397	399	401	403	406	409	411	414	418	423	427	433	438	448	467	484	485
50	352	353	356	359	361	363	366	370	373	376	380	385	390	396	402	411	432	450	450
55	308	309	312	316	318	320	324	328	331	335	339	345	350	357	363	373	394	413	413
60	261	263	266	270	273	276	281	285	289	292	297	303	309	315	322	333	354	373	373
65	214	217	220	224	227	232	236	240	245	250	255	260	267	275	282	292	313	332	331
70	167	170	174	178	183	187	192	197	203	209	214	221	228	236	242	251	272	291	291
75	121	124	128	134	139	145	151	158	164	170	175	182	189	198	204	212	232	250	250
80	78.3	81.5	87.0	93.8	99.8	106	113	120	126	132	138	145	154	163	169	178	197	214	213
85	39.4	43.1	49.5	57.1	63.5	70.2	78.1	86.9	96.7	107	116	125	133	141	147	156	175	190	187
90	7.75	18.4	29.9	42.7	55.6	68.6	81.2	93.5	106	118	128	138	147	155	160	165	173	179	173
95	24.0	34.5	45.5	58.4	72.7	88.0	103	119	134	149	159	169	178	187	191	195	204	209	200
100	54.7	64.3	77.0	92.5	109	128	149	170	190	207	217	224	232	238	241	244	253	257	244
105	93.4	102	116	135	156	181	213	246	275	299	309	314	318	320	319	319	327	330	311
110	137	143	160	182	207	238	279	323	369	408	424	431	436	438	433	429	438	442	415
115	184	188	205	231	259	294	339	390	450	505	536	554	567	572	569	565	576	580	547
120	231	233	251	279	311	349	393	446	512	576	624	661	686	701	706	707	721	724	690
125	278	278	295	323	356	396	440	490	555	622	677	723	760	788	803	813	828	833	804
130	325	324	339	364	397	436	477	523	581	642	698	749	790	823	846	862	878	883	862
135	369	367	379	402	432	467	506	548	594	643	695	744	786	820	845	864	878	883	870
140	411	407	416	434	460	491	524	560	599	639	679	718	754	786	811	830	844	850	842
145	450	444	450	463	482	507	535	565	595	626	657	688	715	740	760	777	788	794	789
150	485	479	481	488	502	520	540	561	585	609	631	651	671	688	703	716	726	730	730
155	516	510	508	511	518	530	543	558	573	588	604	618	631	643	653	661	667	671	671
160	542	536	532	530	533	539	546	555	564	573	582	591	598	605	612	618	622	624	624
165	562	558	554	550	549	550	552	555	559	563	567	571	575	579	582	585	590	594	591
170	577	574	571	568	566	565	564	564	564	564	565	565	566	568	569	570	573	574	571
175	586	585	584	583	582	582	581	581	581	581	581	582	582	583	583	583	586	587	578
180	600	600	600	600	600	600	600	600	600	600	600	600	600	600	600	600	600	600	600

C Range: 0 - 360DEG
 C Interval: 5.0DEG
 Test Speed: MEDIUM
 Temperature:25.3DEG
 Operators:DAMIN
 Test Date:2020-09-15

γ Range: 0 - 180DEG
 γ Interval: 0.5DEG
 Test System:EVERFINE GO-2000_V1 SYSTEM V2.0.291
 Humidity:65.0%
 Test Distance:10.000m [K=1.0000]
 Remarks:

LUMINOUS DISTRIBUTION INTENSITY DATA

Test:U:0V I:0A P:0W PF:0 Lamp Flux:2345.06x2 lm		
NAME: ZE-41-I40AC	TYPE:	WEIGHT:
SPEC.:	DIM.: 1280*33*63	SERIAL No.:
MFR.: EVERFINE	SUR.:1280*33*8	PROTECTION ANGLE:

Table--3

UNIT: cd

C(DEG) γ (DEG)	190	195	200	205	210	215	220	225	230	235	240	245	250	255	260	265	270	275	280
0	607	607	606	605	605	604	604	603	603	602	602	601	601	600	600	599	599	598	598
5	607	607	606	605	604	604	603	602	601	601	600	599	599	598	598	597	597	597	597
10	606	605	604	603	602	600	599	598	596	595	594	593	592	591	591	590	590	590	590
15	601	600	599	597	595	593	591	589	587	585	584	582	580	580	579	578	578	578	578
20	593	591	589	587	584	582	579	576	573	570	568	566	564	563	562	561	560	561	562
25	579	577	575	572	568	565	562	558	554	551	548	545	542	541	540	538	538	539	540
30	561	559	556	552	548	544	540	535	530	527	524	520	516	515	513	512	511	512	514
35	538	535	532	528	523	519	514	508	503	498	495	490	486	484	482	480	480	481	484
40	510	508	504	499	494	489	484	477	471	466	462	456	452	449	447	445	444	446	450
45	480	477	473	467	461	456	450	442	435	430	425	419	414	411	408	406	405	408	413
50	445	442	437	431	425	419	412	404	396	390	385	379	373	369	366	363	362	366	372
55	407	404	399	393	385	379	372	363	354	348	342	335	329	324	321	318	317	322	330
60	367	363	359	352	344	337	330	320	311	304	297	290	282	277	273	270	270	275	284
65	325	322	317	309	301	294	286	276	265	257	250	242	235	229	224	221	221	227	236
70	284	280	274	267	259	250	240	230	221	212	204	196	188	181	176	172	172	179	190
75	244	240	233	226	218	209	199	189	178	169	160	150	142	135	130	125	124	132	144
80	206	201	194	187	179	170	160	149	138	128	120	109	99.3	91.6	85.7	80.6	79.9	88.0	101
85	178	172	164	155	145	135	125	113	101	91.2	81.7	70.9	60.7	52.3	45.6	40.1	39.3	48.0	61.5
90	164	158	152	145	136	127	117	106	94.5	82.3	69.6	56.7	43.8	30.5	18.6	7.60	3.11	13.1	29.9
95	187	179	173	166	158	149	139	127	115	100	85.3	71.6	58.5	45.3	33.6	24.0	20.2	28.4	42.8
100	227	219	213	207	201	193	184	172	157	139	120	104	90.2	74.7	61.6	53.2	51.2	59.5	73.9
105	289	282	279	277	274	270	262	246	225	197	169	148	129	111	96.9	90.1	90.2	97.9	111
110	385	378	378	379	379	375	362	333	297	259	223	196	173	152	136	132	134	141	152
115	512	502	501	500	497	484	459	414	363	317	277	245	219	195	179	176	181	187	197
120	651	637	630	622	608	578	536	478	418	370	328	293	264	239	222	222	229	235	244
125	769	752	736	713	683	641	589	527	465	416	375	338	308	282	266	268	278	285	293
130	834	814	791	760	722	674	620	559	501	456	417	380	349	323	308	313	325	334	344
135	850	830	805	772	731	681	628	577	528	487	450	415	386	363	351	357	370	381	391
140	827	810	786	753	714	671	627	586	547	510	476	444	418	400	391	398	412	425	434
145	779	765	745	719	688	656	622	588	555	523	494	468	448	434	429	437	451	463	473
150	725	715	701	680	657	633	608	582	556	531	509	490	475	466	464	473	486	497	507
155	668	663	655	641	625	609	591	572	552	535	520	508	499	495	496	505	516	527	536
160	621	618	614	606	596	585	574	562	550	540	531	524	520	520	524	532	542	550	558
165	587	585	583	579	573	568	562	555	549	544	541	539	540	542	547	554	562	568	575
170	566	566	567	564	560	558	557	555	553	552	553	555	559	562	566	571	576	581	586
175	569	566	566	566	566	565	565	566	567	568	569	572	575	577	579	582	585	588	591
180	600	600	600	600	600	600	600	600	600	600	600	600	600	600	600	600	600	600	600

C Range: 0 - 360DEG
 C Interval: 5.0DEG
 Test Speed: MEDIUM
 Temperature:25.3DEG
 Operators:DAMIN
 Test Date:2020-09-15

γ Range: 0 - 180DEG
 γ Interval: 0.5DEG
 Test System:EVERFINE GO-2000_V1 SYSTEM V2.0.291
 Humidity:65.0%
 Test Distance:10.000m [K=1.0000]
 Remarks:

LUMINOUS DISTRIBUTION INTENSITY DATA

Test:U:0V I:0A P:0W PF:0 Lamp Flux:2345.06x2 lm		
NAME: ZE-41-I40AC	TYPE:	WEIGHT:
SPEC.:	DIM.: 1280*33*63	SERIAL No.:
MFR.: EVERFINE	SUR.:1280*33*8	PROTECTION ANGLE:

Table--4

UNIT: cd

C(DEG) γ (DEG)	285	290	295	300	305	310	315	320	325	330	335	340	345	350	355				
0	598	597	597	597	596	596	596	596	596	596	596	595	595	595	600				
5	596	596	596	596	596	596	596	596	596	596	596	596	595	596	601				
10	590	590	591	591	592	592	593	593	594	594	595	595	595	596	601				
15	579	580	581	582	584	585	587	589	591	592	593	594	594	595	599				
20	563	564	567	570	573	576	579	582	585	587	589	590	590	590	593				
25	542	545	549	554	558	563	568	572	576	579	581	583	582	581	582				
30	517	522	528	534	540	546	553	558	563	566	569	570	569	567	567				
35	489	495	502	511	519	526	533	540	545	549	552	553	552	549	547				
40	456	464	473	484	493	501	510	517	523	527	530	532	529	526	523				
45	420	430	441	453	463	473	482	490	496	501	504	506	503	499	494				
50	382	393	405	418	430	440	451	459	466	470	474	476	473	467	462				
55	340	353	367	381	393	405	416	425	432	436	440	442	439	433	426				
60	296	310	326	341	354	366	377	387	394	399	403	405	402	395	387				
65	250	266	282	298	312	324	336	347	354	359	364	366	362	355	347				
70	204	221	237	253	267	281	294	305	312	317	322	324	321	314	305				
75	159	176	193	208	223	237	249	260	268	275	280	283	279	273	265				
80	116	132	149	166	181	195	208	220	229	237	242	245	243	238	230				
85	76.6	93.6	112	131	148	164	179	192	202	210	217	220	219	214	206				
90	48.6	69.1	89.6	110	129	147	165	180	191	199	205	208	207	202	194				
95	59.7	78.2	95.6	114	134	154	174	191	202	210	215	217	218	218	216				
100	92.3	113	132	153	180	208	235	258	270	276	279	279	278	276	274				
105	130	152	176	202	232	266	307	344	367	379	380	376	373	369	365				
110	170	192	219	249	283	322	369	415	456	487	497	497	497	494	489				
115	213	234	259	289	326	369	421	474	523	564	594	614	623	625	622				
120	257	275	299	330	366	407	456	509	566	620	661	691	713	725	729				
125	302	316	339	369	401	439	483	532	588	642	688	725	753	772	781				
130	348	355	375	402	431	465	503	544	591	639	688	729	755	773	786				
135	392	395	409	431	457	486	517	550	587	626	668	707	732	750	764				
140	435	435	443	457	478	502	529	556	584	612	642	671	694	712	723				
145	476	477	479	484	498	516	535	557	579	602	624	644	662	676	684				
150	512	515	514	514	519	529	541	556	572	588	604	618	633	645	652				
155	542	545	545	544	545	547	552	559	568	578	587	597	605	612	617				
160	564	569	571	571	570	569	568	568	570	573	578	584	587	589	593				
165	581	586	589	590	591	591	589	587	584	582	581	580	579	579	581				
170	591	595	599	601	603	604	603	603	601	600	598	596	594	593	590				
175	594	597	600	602	604	606	608	609	609	608	608	607	606	605	604				
180	600	600	600	600	600	600	600	600	600	600	600	600	600	600	600				

C Range: 0 - 360DEG
 C Interval: 5.0DEG
 Test Speed: MEDIUM
 Temperature:25.3DEG
 Operators:DAMIN
 Test Date:2020-09-15

γ Range: 0 - 180DEG
 γ Interval: 0.5DEG
 Test System:EVERFINE GO-2000_V1 SYSTEM V2.0.291
 Humidity:65.0%
 Test Distance:10.000m [K=1.0000]
 Remarks:

Photometric Data Table [cd]

G/C	0.0	5.0	10.0	15.0	20.0	25.0	30.0	35.0	40.0	45.0
0.0	608.3	607.7	607.1	606.5	605.9	605.3	604.7	604.2	603.6	603.1
2.5	608.7	608.0	607.2	606.4	605.7	605.0	604.4	603.7	603.0	602.4
5.0	608.9	608.1	607.3	606.4	605.5	604.6	603.7	602.7	601.8	601.0
7.5	608.7	608.0	607.2	606.2	605.1	604.0	602.8	601.5	600.2	599.1
10.0	608.3	607.5	606.6	605.4	604.2	603.0	601.7	599.9	598.1	596.5
12.5	606.9	606.2	605.3	604.1	602.6	601.2	599.5	597.5	595.4	593.3
15.0	604.7	604.0	603.0	601.7	600.2	598.6	596.7	594.4	591.8	589.4
17.5	601.3	600.8	599.9	598.5	596.8	595.1	593.1	590.4	587.5	584.7
20.0	597.0	596.5	595.6	594.1	592.4	590.6	588.4	585.5	582.3	579.0
22.5	591.4	591.0	590.1	588.6	586.8	585.0	582.7	579.6	576.1	572.4
25.0	584.7	584.3	583.5	581.9	580.1	578.2	575.8	572.5	568.7	564.7
27.5	576.5	576.3	575.5	574.0	572.1	570.1	567.6	564.2	560.2	555.9
30.0	567.3	567.2	566.4	564.9	563.0	561.0	558.5	554.9	550.7	546.2
32.5	556.9	556.9	556.1	554.6	552.6	550.6	548.1	544.3	539.9	535.3
35.0	545.4	545.4	544.7	543.2	541.2	539.2	536.6	532.9	528.4	523.5
37.5	532.8	533.0	532.3	530.7	528.6	526.7	524.2	520.3	515.5	510.6
40.0	519.1	519.4	518.8	517.1	515.0	513.2	510.7	506.7	501.8	496.7
42.5	504.4	504.7	504.1	502.5	500.3	498.5	496.1	492.1	487.1	481.9
45.0	488.6	488.9	488.4	486.9	484.9	483.1	480.6	476.7	471.8	466.2
47.5	472.2	472.5	472.0	470.6	468.7	466.8	464.2	460.1	455.1	449.5
50.0	454.7	455.1	454.7	453.4	451.5	449.4	446.7	442.7	437.8	432.0
52.5	436.4	436.9	436.6	435.2	433.3	431.3	428.6	424.6	419.6	413.7
55.0	417.5	418.1	417.7	416.4	414.4	412.4	409.7	405.7	400.6	394.7
57.5	398.0	398.7	398.4	397.0	394.9	392.9	390.2	386.2	381.0	375.1
60.0	377.8	378.5	378.2	376.9	374.8	372.9	370.1	365.9	360.6	354.7
62.5	357.2	358.0	357.8	356.4	354.4	352.3	349.5	345.3	340.0	334.0
65.0	336.2	337.0	336.8	335.3	333.1	331.2	328.5	324.3	319.0	312.8
67.5	315.5	316.1	315.7	314.3	312.3	310.1	307.1	302.9	297.7	291.5
70.0	295.1	295.7	295.2	293.5	291.2	288.8	285.8	281.6	276.1	268.9
72.5	274.6	275.1	274.6	273.0	270.5	266.7	262.4	258.9	254.4	247.2
75.0	254.3	254.2	253.6	252.9	251.2	247.4	242.6	238.2	232.9	225.5
77.5	235.4	236.3	236.4	235.9	234.1	230.0	224.8	219.9	213.8	205.4
80.0	219.1	221.1	221.8	221.7	219.9	215.6	210.0	204.3	197.4	187.7
82.5	206.1	208.7	209.9	210.0	208.3	203.7	197.6	191.6	184.1	173.7
85.0	195.1	198.6	200.6	201.2	199.7	194.9	188.4	181.8	173.6	162.3
87.5	187.0	191.6	194.5	196.1	195.2	190.5	183.6	176.1	166.7	154.3
90.0	182.1	189.3	194.0	196.2	195.7	191.6	185.1	177.5	167.3	152.9
92.5	195.0	202.7	207.7	210.2	209.5	204.6	196.9	187.9	175.8	158.3
95.0	213.5	223.2	230.1	234.8	236.1	232.4	225.3	216.4	203.2	182.1
97.5	237.7	250.7	260.7	268.2	272.0	271.0	265.4	255.7	240.1	214.4
100.0	270.3	286.9	300.2	310.7	317.0	317.9	312.9	302.0	283.2	251.6
102.5	310.3	330.9	347.9	362.0	370.9	373.3	367.7	352.3	327.2	288.8
105.0	359.5	384.1	404.4	421.5	431.9	432.4	422.9	401.3	369.3	324.3
107.5	417.8	444.7	466.3	484.0	493.5	491.0	476.5	447.4	407.6	357.1
110.0	481.1	509.5	531.2	547.8	554.4	546.1	524.3	486.6	439.1	384.8
112.5	548.1	576.3	596.0	608.8	609.9	593.9	564.0	519.1	466.0	409.0
115.0	614.4	639.9	655.2	661.8	655.6	631.8	594.5	544.6	487.8	428.3
117.5	675.3	695.4	704.3	702.5	688.3	659.2	617.5	562.1	501.6	444.1
120.0	723.9	736.2	738.2	730.2	710.7	678.3	633.9	573.5	510.0	456.2
122.5	758.0	764.2	760.8	748.1	724.9	689.7	643.2	581.3	517.7	466.8
125.0	780.0	780.9	772.9	756.7	730.3	690.7	642.0	584.6	526.8	478.0
127.5	791.4	787.3	775.5	757.0	728.9	686.3	636.5	584.0	532.5	488.0
130.0	792.6	785.2	770.6	749.9	720.0	675.0	625.2	579.5	536.2	496.7
132.5	786.0	774.7	757.6	735.9	706.1	661.0	612.9	573.4	537.3	503.3
135.0	771.5	758.0	739.3	715.8	686.3	646.8	605.9	572.0	540.7	510.0
137.5	751.5	737.2	718.2	694.3	666.3	633.9	600.9	571.6	543.7	515.5
140.0	728.8	715.4	697.3	673.3	647.0	621.7	596.3	570.2	544.4	519.6
142.5	706.1	694.9	679.0	657.0	633.1	611.7	590.3	567.4	544.7	523.1
145.0	686.8	679.1	664.9	642.0	617.6	600.3	583.9	564.1	544.1	525.7
147.5	671.5	661.3	646.8	626.2	605.1	590.4	576.9	560.6	544.3	529.3
150.0	653.9	641.2	626.9	609.8	593.3	581.6	570.9	558.2	545.8	534.7
152.5	636.3	622.2	608.6	595.2	583.1	574.3	566.3	556.6	547.6	540.6
155.0	621.3	604.4	591.1	582.1	575.4	569.1	563.5	557.7	552.8	549.4
157.5	607.3	591.1	579.8	574.4	571.4	566.2	561.8	559.5	558.7	558.8
160.0	597.4	581.6	571.4	568.4	568.1	565.6	563.9	565.5	568.1	569.9
162.5	588.2	574.6	566.9	566.8	569.6	570.4	571.8	575.1	578.7	580.9
165.0	583.5	573.7	569.1	571.4	576.1	578.7	581.4	585.3	588.7	590.1
167.5	580.4	577.4	577.1	580.4	584.8	587.8	590.6	593.3	595.4	596.3
170.0	587.8	586.1	586.2	588.7	592.0	594.4	596.6	598.5	599.9	600.2
172.5	595.7	592.8	592.0	594.0	596.7	598.3	599.5	600.5	601.0	600.5
175.0	601.8	597.5	595.3	595.9	597.4	597.8	597.8	597.6	597.3	596.7
177.5	604.6	597.2	592.7	591.6	592.1	591.9	591.8	591.6	591.3	591.0
180.0	599.7	599.7	599.7	599.7	599.7	599.7	599.7	599.7	599.7	599.7

C Range: 0 - 360DEG
 C Interval: 5.0DEG
 Test Speed: MEDIUM
 Temperature: 25.3DEG
 Operators: DAMIN
 Test Date: 2020-09-15

γ Range: 0 - 180DEG
 γ Interval: 0.5DEG
 Test System: EVERFINE GO-2000_V1 SYSTEM V2.0.291
 Humidity: 65.0%
 Test Distance: 10.000m [K=1.0000]
 Remarks:

Photometric Data Table [cd]

G/C	50.0	55.0	60.0	65.0	70.0	75.0	80.0	85.0	90.0	95.0
0.0	602.6	602.0	601.5	601.0	600.6	600.1	599.6	599.1	598.7	598.3
2.5	601.8	601.2	600.5	600.1	599.7	599.1	598.4	598.0	597.5	597.1
5.0	600.3	599.4	598.6	598.0	597.4	596.7	596.1	595.5	595.1	594.5
7.5	598.0	596.8	595.6	594.8	594.1	593.2	592.3	591.8	591.4	590.7
10.0	595.0	593.3	591.7	590.6	589.5	588.3	587.3	586.6	586.2	585.6
12.5	591.3	589.0	586.8	585.3	584.0	582.5	581.2	580.5	579.9	579.2
15.0	586.8	583.9	581.1	579.0	577.2	575.2	573.6	572.8	572.2	571.5
17.5	581.6	578.1	574.6	571.8	569.3	566.9	565.0	564.0	563.4	562.6
20.0	575.5	571.3	567.0	563.6	560.5	557.6	555.2	554.0	553.3	552.5
22.5	568.4	563.5	558.6	554.4	550.6	547.1	544.3	542.9	542.1	541.2
25.0	560.3	554.8	549.2	544.3	539.8	535.6	532.3	530.8	530.0	529.0
27.5	551.1	545.0	538.6	533.1	528.1	523.1	519.1	517.2	516.3	515.4
30.0	540.9	534.4	527.7	521.3	515.3	509.6	505.1	502.8	501.7	500.8
32.5	530.0	522.8	515.2	508.3	501.8	495.1	489.8	487.3	486.3	485.4
35.0	517.8	510.2	502.1	494.5	487.2	479.9	474.0	471.1	469.8	468.9
37.5	504.6	496.6	487.9	479.8	472.0	463.9	457.1	453.9	452.4	451.4
40.0	490.5	482.2	473.2	464.5	455.9	447.0	439.5	435.9	434.2	433.1
42.5	475.5	466.7	457.2	447.9	438.8	429.2	421.1	417.0	415.1	414.0
45.0	459.3	450.4	440.6	430.9	421.2	410.8	402.0	397.4	395.2	394.1
47.5	442.6	433.5	423.4	413.2	402.9	391.8	382.3	377.3	374.7	373.7
50.0	425.0	415.8	405.6	394.8	383.7	372.0	361.9	356.3	353.5	352.4
52.5	406.5	397.0	386.4	375.5	364.2	351.8	341.0	334.9	331.7	330.6
55.0	387.3	377.8	367.0	355.7	344.0	331.0	319.7	313.0	309.4	308.3
57.5	367.7	357.9	346.8	335.3	323.2	309.7	297.8	290.7	286.8	285.6
60.0	347.4	337.3	325.9	314.3	302.0	288.1	275.4	266.9	261.9	261.4
62.5	326.5	316.6	305.2	292.9	279.9	265.7	252.9	243.9	238.6	238.0
65.0	305.1	295.0	283.4	270.4	256.9	242.8	230.1	220.7	214.9	214.4
67.5	283.8	273.6	261.8	248.6	234.7	220.3	207.4	197.5	191.3	190.8
70.0	260.4	250.9	240.0	226.8	212.7	197.9	184.4	174.3	168.0	167.4
72.5	238.4	229.0	218.0	204.7	190.4	175.4	161.8	151.3	144.6	144.0
75.0	216.8	207.2	196.2	183.0	168.5	152.9	138.6	128.3	121.9	121.0
77.5	195.7	185.8	174.7	161.5	147.2	131.7	117.5	106.8	100.1	99.28
80.0	176.8	165.8	154.0	140.6	126.5	111.2	96.99	85.98	78.98	78.34
82.5	161.6	148.5	134.8	120.9	106.7	91.38	77.28	66.11	58.97	58.34
85.0	149.2	135.4	120.7	104.9	88.85	72.95	58.68	47.17	39.84	39.42
87.5	140.0	125.0	109.1	92.34	75.20	57.31	41.17	28.93	21.29	20.67
90.0	136.4	119.5	101.8	83.59	65.09	45.93	28.23	12.49	3.249	7.745
92.5	138.7	119.6	100.4	81.31	62.88	45.47	30.05	16.29	8.524	13.17
95.0	158.4	136.7	115.8	96.18	77.55	59.22	42.76	27.95	19.38	24.00
97.5	185.9	161.0	137.6	115.7	95.16	75.34	57.86	42.77	34.10	38.02
100.0	216.8	187.5	160.7	136.2	113.8	92.81	74.74	59.88	51.50	54.66
102.5	247.6	214.2	184.5	157.4	133.3	111.7	93.68	79.10	70.89	73.25
105.0	277.0	238.5	205.1	177.3	153.5	131.9	114.0	99.80	91.82	93.38
107.5	305.6	264.5	229.0	198.4	172.6	151.7	135.3	121.9	114.1	114.2
110.0	331.2	288.2	251.5	220.0	193.8	172.8	156.6	144.2	137.2	136.6
112.5	354.1	309.8	272.3	240.8	215.0	194.5	179.0	168.1	162.2	160.2
115.0	371.9	327.1	289.9	259.7	235.5	216.5	202.3	192.4	186.7	183.5
117.5	391.2	348.2	312.0	281.4	256.9	239.1	226.4	217.2	211.6	207.2
120.0	408.3	367.6	332.7	302.1	277.7	261.9	251.2	242.1	235.9	230.5
122.5	422.9	385.3	352.6	322.2	298.0	285.2	277.2	268.0	260.7	254.0
125.0	435.4	400.4	370.3	340.9	318.0	309.3	304.7	294.5	285.1	277.7
127.5	448.8	415.9	387.2	359.3	338.1	332.6	330.6	320.0	309.5	301.6
130.0	461.0	430.3	403.3	377.3	358.3	355.4	355.4	344.8	333.3	324.6
132.5	471.9	442.9	417.3	394.7	379.0	378.3	379.6	368.8	356.6	347.3
135.0	481.2	454.5	431.2	412.1	399.7	400.6	402.5	391.8	379.2	369.3
137.5	488.9	464.7	444.4	429.4	420.5	422.3	424.2	413.6	400.9	390.6
140.0	496.3	474.9	457.5	447.1	441.9	444.1	445.4	434.8	421.9	411.2
142.5	503.3	485.6	472.1	466.2	464.4	465.9	465.5	454.8	441.9	430.9
145.0	509.6	496.6	487.7	485.2	485.3	486.2	484.6	473.8	461.0	450.0
147.5	516.7	508.5	503.8	503.5	504.5	504.5	501.6	491.1	478.8	468.1
150.0	526.0	521.7	520.1	520.9	521.9	521.0	517.1	507.0	495.4	485.3
152.5	536.1	535.5	536.5	537.4	537.3	535.6	531.1	521.5	510.7	501.2
155.0	547.8	549.5	551.6	551.8	550.6	548.2	543.6	534.6	524.7	516.0
157.5	560.0	562.6	564.8	564.5	562.5	559.4	554.4	546.2	537.4	529.5
160.0	571.8	574.1	575.6	574.9	572.7	569.1	563.9	556.5	548.5	541.7
162.5	582.5	584.1	584.7	583.6	581.1	577.2	572.2	565.5	558.5	552.6
165.0	590.7	591.7	591.9	590.0	587.0	583.3	578.9	573.0	567.1	562.1
167.5	596.5	597.0	596.7	594.1	590.7	587.6	584.1	579.2	574.2	570.3
170.0	599.9	599.5	598.3	595.8	592.9	590.3	587.5	583.7	579.9	576.9
172.5	599.6	598.6	597.3	595.6	593.6	591.7	589.6	586.8	584.1	582.1
175.0	596.1	595.8	595.2	593.8	592.3	591.3	590.3	588.8	587.2	586.2
177.5	590.7	590.6	590.5	590.0	589.6	589.7	589.7	589.2	588.7	588.8
180.0	599.7	599.7	599.7	599.7	599.7	599.7	599.7	599.7	599.7	599.7

C Range: 0 - 360DEG
 C Interval: 5.0DEG
 Test Speed: MEDIUM
 Temperature: 25.3DEG
 Operators: DAMIN
 Test Date: 2020-09-15

γ Range: 0 - 180DEG
 γ Interval: 0.5DEG
 Test System: EVERFINE GO-2000_V1 SYSTEM V2.0.291
 Humidity: 65.0%
 Test Distance: 10.000m [K=1.0000]
 Remarks:

Photometric Data Table [cd]

G/C	100.0	105.0	110.0	115.0	120.0	125.0	130.0	135.0	140.0	145.0
0.0	597.9	597.6	597.3	596.9	596.6	596.4	596.3	596.1	596.0	595.9
2.5	596.6	596.3	596.0	595.6	595.4	595.2	595.1	595.0	594.9	594.8
5.0	594.0	593.7	593.4	593.1	592.9	592.8	592.8	592.8	592.8	593.0
7.5	590.1	589.8	589.7	589.4	589.3	589.4	589.5	589.6	589.7	590.1
10.0	585.1	584.9	584.8	584.6	584.5	584.8	585.1	585.4	585.7	586.3
12.5	578.6	578.6	578.7	578.5	578.5	578.9	579.5	579.8	580.3	581.2
15.0	570.9	571.0	571.2	571.1	571.2	571.8	572.6	573.1	573.8	575.0
17.5	562.0	562.2	562.5	562.6	562.9	563.7	564.7	565.4	566.3	567.7
20.0	552.0	552.3	552.9	553.1	553.4	554.5	555.7	556.6	557.6	559.2
22.5	540.8	541.3	542.0	542.4	542.8	544.1	545.5	546.5	547.8	549.7
25.0	528.5	529.3	530.3	530.7	531.2	532.7	534.4	535.5	536.7	539.0
27.5	515.0	515.8	517.0	517.5	518.3	520.0	521.9	523.2	524.7	527.2
30.0	500.6	501.6	503.0	503.7	504.7	506.5	508.5	510.0	511.8	514.4
32.5	485.2	486.3	487.8	488.7	489.7	491.8	494.1	495.7	497.6	500.5
35.0	468.8	470.2	472.0	473.0	474.3	476.4	478.8	480.7	482.8	485.8
37.5	451.5	453.1	455.1	456.2	457.6	460.0	462.7	464.6	466.8	470.1
40.0	433.2	435.0	437.3	438.6	440.1	442.7	445.6	447.7	450.1	453.7
42.5	414.3	416.3	418.7	420.2	421.8	424.7	427.8	430.0	432.5	436.2
45.0	394.6	396.7	399.4	401.0	402.8	405.8	408.9	411.4	414.1	418.1
47.5	374.2	376.5	379.4	381.2	383.1	386.3	389.6	392.3	395.2	399.3
50.0	353.1	355.6	358.6	360.6	362.8	366.1	369.6	372.5	375.6	379.8
52.5	331.5	334.2	337.4	339.5	341.8	345.4	349.2	352.2	355.4	359.8
55.0	309.3	312.2	315.7	318.0	320.4	324.2	328.2	331.3	334.6	339.3
57.5	286.6	289.6	293.4	295.9	298.6	302.6	306.8	310.2	313.8	318.6
60.0	263.3	266.4	270.1	273.1	276.4	280.7	285.2	288.6	292.3	297.3
62.5	240.1	242.9	246.5	250.3	254.1	257.8	261.6	266.1	271.0	276.5
65.0	216.7	219.7	223.5	227.5	231.6	235.6	239.8	244.6	249.7	254.5
67.5	193.2	196.5	200.7	204.9	209.3	213.6	218.2	223.5	229.1	234.3
70.0	169.9	173.7	178.3	182.6	187.2	192.1	197.4	203.1	208.9	214.4
72.5	146.7	150.8	155.9	160.6	165.6	171.2	177.1	183.1	189.1	194.7
75.0	123.6	128.3	134.2	139.4	144.9	151.1	157.5	163.7	169.8	175.5
77.5	102.1	107.1	113.4	119.0	125.0	131.6	138.3	144.6	150.7	156.7
80.0	81.49	87.04	93.81	99.84	106.1	113.0	119.8	125.8	131.8	138.3
82.5	61.71	67.92	75.32	81.46	87.68	94.72	101.9	108.5	115.4	123.0
85.0	43.10	49.49	57.11	63.46	70.15	78.11	86.92	96.72	106.7	116.0
87.5	24.64	31.85	41.54	52.79	64.83	76.47	88.01	99.56	110.6	120.3
90.0	18.41	29.90	42.73	55.65	68.64	81.19	93.54	106.0	117.9	128.2
92.5	23.58	35.02	48.07	61.80	75.88	89.55	103.1	117.0	130.0	140.6
95.0	34.51	45.53	58.35	72.73	88.00	103.5	119.0	134.5	148.6	159.3
97.5	48.12	59.90	73.84	88.91	105.2	122.8	140.6	158.0	173.3	183.9
100.0	64.26	76.97	92.50	109.4	127.9	148.6	169.6	189.6	206.5	216.6
102.5	82.29	95.72	112.9	132.2	154.2	180.0	205.9	229.5	248.8	259.0
105.0	101.8	115.9	134.5	155.9	181.4	213.3	246.0	275.5	298.7	309.2
107.5	121.6	136.8	157.5	181.0	209.5	246.5	285.4	323.3	353.7	366.2
110.0	143.2	159.6	182.1	207.1	238.0	278.9	323.3	369.3	407.6	423.9
112.5	165.4	182.3	206.3	233.3	266.5	309.7	358.0	412.2	459.2	481.7
115.0	187.6	205.2	230.6	259.2	294.3	338.8	389.7	450.4	505.2	536.0
117.5	210.3	228.4	255.2	286.2	323.5	367.8	419.3	484.0	545.1	585.1
120.0	232.8	251.1	278.6	310.6	348.9	393.5	445.6	511.8	576.4	624.4
122.5	255.1	272.9	300.5	333.7	373.3	417.7	469.5	535.7	601.8	654.6
125.0	278.3	295.4	322.6	356.3	396.2	439.5	490.1	555.4	621.7	676.7
127.5	301.7	317.7	343.8	377.7	417.6	459.5	508.1	570.7	635.0	691.1
130.0	323.8	338.9	364.2	397.3	436.3	476.7	523.0	581.5	642.4	698.5
132.5	345.6	359.6	383.5	414.8	451.9	491.6	536.3	589.0	644.5	699.3
135.0	366.8	379.4	401.7	431.6	467.2	505.7	548.0	594.0	642.7	694.6
137.5	387.2	398.1	418.5	446.5	480.1	516.7	556.2	597.6	640.9	687.6
140.0	406.8	415.9	433.9	459.6	490.7	524.2	560.4	599.2	639.1	679.2
142.5	425.8	433.1	448.7	471.2	499.0	530.4	564.2	598.8	634.0	669.6
145.0	444.2	449.7	462.7	482.5	507.1	534.9	564.8	595.0	625.8	657.4
147.5	462.0	465.6	476.1	492.7	513.8	538.1	564.3	590.9	617.7	643.8
150.0	479.1	480.7	488.4	502.1	519.8	539.6	561.4	585.0	608.6	630.7
152.5	495.0	494.8	499.7	510.2	524.6	541.4	559.9	578.9	598.1	617.2
155.0	509.8	508.2	510.8	518.5	529.6	542.9	557.7	572.9	588.3	603.6
157.5	523.5	520.7	521.2	526.7	535.0	544.8	555.9	567.9	580.0	591.7
160.0	536.1	531.8	530.3	533.5	539.3	546.3	554.6	563.6	572.8	581.9
162.5	547.4	542.7	540.1	541.4	544.8	549.2	554.5	560.5	566.8	573.2
165.0	557.7	553.5	550.4	549.3	549.7	551.8	554.9	558.6	562.7	567.0
167.5	566.7	562.8	559.5	557.7	556.9	556.7	557.4	559.4	561.8	563.9
170.0	574.1	570.7	567.7	566.3	565.4	564.3	563.5	563.6	564.1	564.5
172.5	580.3	578.1	576.1	574.7	573.4	572.2	571.4	571.4	571.7	571.9
175.0	585.3	583.9	582.7	582.2	581.8	581.2	580.7	580.9	581.2	581.4
177.5	588.9	588.6	588.3	588.5	588.9	588.9	589.0	589.6	590.3	590.8
180.0	599.7	599.7	599.7	599.7	599.7	599.7	599.7	599.7	599.7	599.7

C Range: 0 - 360DEG
 C Interval: 5.0DEG
 Test Speed: MEDIUM
 Temperature: 25.3DEG
 Operators: DAMIN
 Test Date: 2020-09-15

γ Range: 0 - 180DEG
 γ Interval: 0.5DEG
 Test System: EVERFINE GO-2000_V1 SYSTEM V2.0.291
 Humidity: 65.0%
 Test Distance: 10.000m [K=1.0000]
 Remarks:

Photometric Data Table [cd]

G/C	150.0	155.0	160.0	165.0	170.0	175.0	180.0	185.0	190.0	195.0
0.0	595.7	595.6	595.4	594.6	595.4	602.0	608.3	608.6	607.1	606.5
2.5	594.8	594.8	594.8	594.2	595.3	601.8	608.2	608.5	607.2	606.6
5.0	593.2	593.4	593.6	593.3	594.6	601.6	608.3	608.6	607.1	606.5
7.5	590.6	591.0	591.6	591.6	593.4	600.9	607.9	608.3	606.7	606.1
10.0	587.0	587.7	588.6	589.0	591.2	599.4	607.1	607.5	605.7	604.9
12.5	582.4	583.4	584.6	585.5	588.2	597.2	605.6	606.0	604.0	603.1
15.0	576.5	577.8	579.3	580.7	584.1	594.1	603.3	603.7	601.4	600.2
17.5	569.4	571.1	573.1	574.9	578.9	589.7	599.6	600.0	597.5	596.2
20.0	561.2	563.2	565.6	567.8	572.4	584.2	594.8	595.3	592.5	591.0
22.5	552.0	554.2	557.0	559.7	564.8	577.5	589.0	589.4	586.3	584.7
25.0	541.7	544.2	547.2	550.3	556.1	569.8	582.1	582.4	579.0	577.3
27.5	530.0	532.9	536.3	539.8	545.9	560.6	573.6	574.0	570.5	568.5
30.0	517.4	520.7	524.5	528.3	534.9	550.4	564.2	564.6	560.7	558.6
32.5	504.0	507.3	511.2	515.6	522.8	539.1	553.5	553.8	549.7	547.5
35.0	489.4	493.0	497.4	502.0	509.6	526.7	541.8	542.1	537.7	535.3
37.5	474.0	477.8	482.4	487.3	495.4	513.2	528.9	529.2	524.7	522.1
40.0	457.9	461.9	466.6	472.0	480.5	498.8	514.9	515.2	510.5	507.7
42.5	440.5	444.8	450.0	455.6	464.5	483.4	500.0	500.4	495.4	492.5
45.0	422.6	427.3	432.7	438.5	447.5	467.1	484.3	484.6	479.5	476.5
47.5	404.1	409.0	414.7	420.6	429.9	450.0	467.5	467.8	462.6	459.5
50.0	384.7	390.1	396.2	402.1	411.5	432.1	450.1	450.3	444.7	441.5
52.5	364.9	370.5	376.8	383.0	392.6	413.5	431.8	432.0	426.4	423.1
55.0	344.7	350.4	356.8	363.3	373.1	394.3	412.8	412.9	407.1	403.7
57.5	324.0	329.9	336.5	343.1	353.1	374.6	393.2	393.3	387.3	383.9
60.0	303.1	308.8	315.4	322.3	332.6	354.3	373.1	373.1	367.1	363.5
62.5	282.4	288.5	295.3	302.1	312.3	333.9	352.6	352.5	346.4	342.7
65.0	260.0	267.2	275.3	282.2	292.2	313.3	331.6	331.5	325.4	321.6
67.5	240.0	247.6	255.7	261.8	271.0	292.4	311.1	311.0	304.6	300.7
70.0	220.5	227.9	235.8	242.0	251.2	272.4	290.9	290.7	284.3	279.9
72.5	200.8	208.4	216.5	222.6	231.6	251.9	269.7	270.1	264.4	259.5
75.0	181.6	189.5	197.7	203.6	212.2	232.2	249.7	250.1	244.5	239.6
77.5	163.1	170.8	178.7	184.9	193.8	213.4	230.4	230.6	224.7	219.8
80.0	145.5	154.0	162.7	169.0	177.8	197.3	214.0	213.0	206.1	200.8
82.5	131.2	140.1	149.1	156.3	165.7	185.2	201.3	198.8	190.4	184.4
85.0	124.8	132.9	140.8	147.3	156.1	175.0	190.5	187.2	177.9	171.6
87.5	129.4	138.2	146.0	150.4	156.0	170.7	182.3	177.6	167.8	161.0
90.0	137.6	146.8	154.8	159.8	164.6	173.5	179.3	173.3	163.9	158.1
92.5	150.2	159.9	168.2	173.1	177.6	186.4	191.7	183.7	172.4	166.1
95.0	168.6	178.3	186.6	191.2	195.3	204.1	209.1	199.5	186.6	179.5
97.5	192.4	201.6	209.2	213.2	216.8	225.7	230.4	219.2	204.5	197.1
100.0	223.8	231.8	238.3	241.1	243.8	252.9	257.4	243.7	226.6	218.8
102.5	265.0	270.7	274.8	276.3	278.1	286.5	290.1	273.8	254.5	246.7
105.0	313.8	317.9	319.9	318.9	318.6	326.8	330.0	310.6	288.6	281.6
107.5	370.8	375.2	376.5	372.5	369.2	377.4	380.4	356.8	330.9	324.5
110.0	430.6	436.2	437.8	433.1	429.1	438.3	441.5	414.7	385.5	378.2
112.5	493.0	501.0	503.6	499.2	495.0	504.8	508.0	478.5	446.2	438.0
115.0	554.4	566.5	571.6	568.6	565.2	576.3	579.8	547.4	511.7	502.1
117.5	612.7	630.4	639.4	639.5	638.3	650.5	653.9	619.6	581.4	569.5
120.0	661.1	686.0	701.1	705.7	707.4	720.8	724.3	690.0	650.9	637.3
122.5	697.6	729.5	751.4	761.2	766.6	781.2	785.2	753.1	715.4	700.0
125.0	723.3	760.4	787.8	803.2	812.9	828.4	832.8	804.1	768.9	751.5
127.5	740.1	780.1	811.1	830.7	843.9	859.9	864.7	840.0	807.9	788.9
130.0	748.9	790.3	823.3	845.9	861.9	878.0	883.2	862.4	833.6	813.5
132.5	750.0	791.8	825.7	850.2	867.6	882.5	887.0	870.9	846.8	826.6
135.0	744.1	785.5	819.8	845.2	863.5	878.0	882.8	870.1	849.5	829.7
137.5	732.8	772.2	805.8	831.5	850.6	864.9	870.2	860.3	842.4	823.7
140.0	718.0	754.4	786.4	811.4	830.3	844.2	849.9	842.5	827.4	810.0
142.5	703.7	735.2	762.9	785.8	803.6	816.7	822.6	817.6	805.5	789.8
145.0	687.8	715.4	739.9	760.4	776.6	788.3	793.5	789.4	778.9	764.8
147.5	669.0	693.3	715.1	733.2	747.5	757.9	762.9	760.3	752.3	740.8
150.0	651.4	670.5	687.8	703.5	716.3	725.5	730.4	729.8	724.5	715.1
152.5	635.3	651.1	665.0	676.9	686.8	695.5	700.7	699.7	694.5	686.9
155.0	618.2	631.3	642.8	652.7	660.8	667.4	671.3	671.0	667.9	663.0
157.5	602.8	613.0	622.1	630.1	636.8	642.0	645.3	645.7	643.7	639.7
160.0	590.5	598.1	605.1	612.0	617.8	621.9	624.1	623.6	621.3	618.4
162.5	579.4	585.2	590.5	595.1	599.4	604.5	608.0	606.8	603.9	601.8
165.0	571.3	575.2	578.8	581.8	584.9	590.0	593.5	591.0	587.0	585.4
167.5	566.0	568.5	570.9	573.0	575.2	579.0	581.5	578.6	574.6	573.3
170.0	565.2	566.5	567.9	569.1	570.4	573.1	574.4	570.5	566.2	566.4
172.5	572.2	572.9	573.6	573.9	574.6	577.8	578.9	571.5	563.5	562.1
175.0	581.7	582.3	582.8	582.8	583.2	586.1	586.8	578.2	568.8	566.5
177.5	591.3	591.9	592.5	592.7	593.0	595.3	595.2	586.7	577.6	575.0
180.0	599.7	599.7	599.7	599.7	599.7	599.7	599.7	599.7	599.7	599.7

C Range: 0 - 360DEG
 C Interval: 5.0DEG
 Test Speed: MEDIUM
 Temperature: 25.3DEG
 Operators: DAMIN
 Test Date: 2020-09-15

γ Range: 0 - 180DEG
 γ Interval: 0.5DEG
 Test System: EVERFINE GO-2000_V1 SYSTEM V2.0.291
 Humidity: 65.0%
 Test Distance: 10.000m [K=1.0000]
 Remarks:

Photometric Data Table [cd]

G/C	200.0	205.0	210.0	215.0	220.0	225.0	230.0	235.0	240.0	245.0
0.0	605.9	605.3	604.7	604.2	603.6	603.1	602.6	602.0	601.5	601.0
2.5	606.0	605.4	604.8	604.2	603.6	603.0	602.5	601.9	601.3	600.8
5.0	605.9	605.2	604.5	603.7	603.0	602.2	601.5	600.8	600.1	599.4
7.5	605.3	604.4	603.4	602.5	601.5	600.4	599.4	598.5	597.7	596.8
10.0	604.0	602.9	601.7	600.4	599.1	597.6	596.2	595.2	594.2	593.1
12.5	601.9	600.5	598.8	597.3	595.7	593.9	592.1	590.7	589.4	588.0
15.0	598.8	597.0	595.0	593.2	591.2	588.9	586.7	585.1	583.6	581.9
17.5	594.6	592.4	590.1	587.9	585.6	582.9	580.3	578.3	576.5	574.5
20.0	589.2	586.7	584.1	581.5	578.9	575.7	572.6	570.3	568.2	565.8
22.5	582.7	579.9	576.8	573.9	570.9	567.3	563.8	561.1	558.7	556.0
25.0	575.0	571.8	568.2	565.0	561.7	557.6	553.7	550.7	548.1	545.0
27.5	566.0	562.5	558.6	555.1	551.4	546.9	542.5	539.2	536.3	532.9
30.0	555.9	552.0	547.8	544.1	540.1	535.1	530.4	526.8	523.6	519.8
32.5	544.7	540.5	535.9	531.9	527.6	522.2	517.0	513.1	509.6	505.4
35.0	532.3	527.9	523.0	518.6	514.0	508.2	502.5	498.4	494.6	490.1
37.5	518.8	514.1	508.9	504.2	499.3	493.1	487.1	482.7	478.6	473.8
40.0	504.2	499.3	493.8	488.9	483.8	477.2	470.7	465.9	461.6	456.5
42.5	488.8	483.7	478.0	472.7	467.2	460.2	453.3	448.2	443.6	438.2
45.0	472.6	467.1	461.0	455.5	449.7	442.2	435.0	429.8	425.0	419.2
47.5	455.5	449.6	443.2	437.4	431.3	423.7	416.1	410.5	405.4	399.3
50.0	437.4	431.3	424.6	418.6	412.2	404.1	396.1	390.3	385.0	379.6
52.5	418.8	412.4	405.4	399.2	392.5	384.1	375.8	369.7	364.0	357.2
55.0	399.3	392.6	385.2	378.9	372.2	363.3	354.5	348.1	342.3	335.2
57.5	379.3	372.5	365.0	358.2	351.0	341.9	332.8	326.2	320.1	312.7
60.0	358.8	351.7	343.8	337.0	329.6	320.0	310.6	303.8	297.5	289.7
62.5	337.8	330.6	322.6	315.5	307.8	297.9	288.2	281.1	274.4	266.5
65.0	316.6	309.1	300.9	293.5	285.7	275.6	265.5	257.3	249.8	242.1
67.5	295.6	288.0	279.4	270.9	262.0	252.4	242.9	234.6	226.8	218.9
70.0	274.3	266.9	258.5	249.7	240.5	230.4	220.5	212.0	203.9	195.7
72.5	253.3	246.1	238.0	229.2	219.6	209.3	199.1	190.0	181.5	173.0
75.0	233.4	226.1	217.9	209.1	199.5	188.8	178.2	168.7	159.7	150.3
77.5	213.6	206.3	198.0	189.1	179.5	168.9	158.3	148.7	139.2	129.1
80.0	194.4	186.9	178.5	169.8	160.2	148.9	137.6	128.5	119.6	109.1
82.5	177.6	169.4	160.5	151.2	141.4	130.0	118.7	109.4	100.3	89.79
85.0	164.4	155.0	144.9	135.4	125.3	113.2	101.0	91.15	81.68	70.93
87.5	153.7	144.4	134.3	124.6	114.3	102.7	90.71	79.20	67.66	55.35
90.0	152.2	144.8	136.5	127.2	117.1	106.1	94.50	82.27	69.64	56.74
92.5	160.3	153.0	144.7	135.3	125.0	113.7	101.7	88.60	75.16	61.89
95.0	173.3	166.1	158.1	148.8	138.5	127.1	114.6	100.1	85.27	71.63
97.5	191.1	184.3	176.8	168.0	157.9	146.1	132.6	116.4	99.93	86.07
100.0	213.2	207.4	201.1	193.4	183.8	171.7	157.1	138.6	119.8	104.5
102.5	242.1	237.8	233.3	227.4	218.8	205.5	188.4	166.4	143.9	125.7
105.0	279.0	276.5	273.7	270.0	262.2	246.3	224.7	197.0	168.9	147.7
107.5	324.0	323.4	322.2	319.9	311.5	289.8	261.2	228.2	195.9	171.5
110.0	378.0	378.8	378.6	374.5	362.3	333.4	297.3	259.3	223.1	195.8
112.5	437.5	438.4	437.3	429.9	412.4	375.0	330.7	288.7	250.1	220.3
115.0	500.5	500.3	496.8	483.9	459.4	414.1	362.8	317.5	276.9	244.9
117.5	565.4	562.5	555.0	534.4	501.4	448.7	391.6	344.3	303.1	269.5
120.0	630.0	622.2	608.1	578.3	536.4	478.4	418.2	369.7	328.0	293.0
122.5	688.8	673.9	651.5	613.6	565.1	504.2	442.8	394.1	352.4	316.0
125.0	735.6	713.4	683.5	640.8	589.2	526.7	464.8	416.3	375.0	338.5
127.5	769.1	741.5	706.4	660.6	607.4	545.1	484.2	437.2	396.9	360.0
130.0	791.0	760.0	721.7	673.8	619.8	559.3	501.0	455.7	416.8	379.9
132.5	802.4	769.9	729.9	680.4	626.2	569.4	515.4	472.0	434.1	398.1
135.0	804.8	771.6	731.1	681.1	627.9	576.6	528.4	486.8	449.8	415.0
137.5	799.3	765.7	725.3	677.1	627.1	581.9	539.5	500.0	463.7	430.4
140.0	786.4	753.2	714.2	670.9	626.8	586.0	547.1	509.9	475.5	444.3
142.5	767.7	736.4	700.6	663.8	626.2	588.7	552.1	517.3	485.4	456.9
145.0	745.3	718.6	687.8	655.6	622.2	588.2	554.8	523.0	493.8	468.4
147.5	724.4	700.7	673.4	645.2	615.9	585.7	555.9	527.5	501.7	479.5
150.0	700.8	680.3	656.6	633.0	608.4	582.0	555.6	530.9	508.7	489.7
152.5	675.8	659.9	641.1	621.6	600.4	576.8	553.4	532.8	514.7	498.9
155.0	654.7	641.3	625.1	608.6	590.9	571.5	552.4	535.2	520.1	507.6
157.5	633.1	622.4	609.6	596.3	582.0	566.5	551.1	537.3	525.5	516.1
160.0	613.6	605.7	596.1	585.5	574.1	561.9	550.1	539.8	531.1	524.1
162.5	598.4	591.7	583.6	575.9	567.8	558.4	549.2	541.5	535.4	530.9
165.0	583.4	578.9	573.3	567.8	561.9	555.4	549.3	544.3	540.8	539.1
167.5	572.0	569.0	565.5	561.9	558.1	554.0	550.3	547.2	545.7	546.9
170.0	566.8	563.8	560.3	558.3	556.7	554.5	552.8	552.4	553.2	555.4
172.5	562.3	560.9	559.5	558.6	558.2	558.6	559.4	560.2	561.6	563.9
175.0	566.4	565.9	565.7	565.3	565.2	565.9	566.8	567.7	569.1	571.8
177.5	574.6	574.3	574.2	573.9	573.9	574.8	575.9	576.5	577.3	579.0
180.0	599.7	599.7	599.7	599.7	599.7	599.7	599.7	599.7	599.7	599.7

C Range: 0 - 360DEG
 C Interval: 5.0DEG
 Test Speed: MEDIUM
 Temperature: 25.3DEG
 Operators: DAMIN
 Test Date: 2020-09-15

γ Range: 0 - 180DEG
 γ Interval: 0.5DEG
 Test System: EVERFINE GO-2000_V1 SYSTEM V2.0.291
 Humidity: 65.0%
 Test Distance: 10.000m [K=1.0000]
 Remarks:

Photometric Data Table [cd]

G/C	250.0	255.0	260.0	265.0	270.0	275.0	280.0	285.0	290.0	295.0
0.0	600.6	600.1	599.6	599.1	598.7	598.3	597.9	597.6	597.3	596.9
2.5	600.3	599.8	599.4	598.9	598.5	598.2	597.9	597.6	597.3	597.1
5.0	598.8	598.3	597.9	597.4	597.0	596.8	596.6	596.3	596.1	596.0
7.5	596.1	595.6	595.1	594.6	594.1	594.0	594.0	593.8	593.7	593.9
10.0	592.1	591.5	591.0	590.4	590.0	589.9	590.0	590.0	590.1	590.5
12.5	586.9	586.2	585.7	585.0	584.6	584.7	585.0	585.1	585.4	586.2
15.0	580.5	579.6	579.0	578.2	577.7	578.0	578.5	578.9	579.6	580.8
17.5	572.7	571.7	571.0	570.2	569.7	570.0	570.8	571.4	572.5	574.3
20.0	563.8	562.6	561.8	560.8	560.2	560.8	561.8	562.8	564.3	566.8
22.5	553.7	552.3	551.4	550.3	549.7	550.3	551.6	553.0	555.1	558.4
25.0	542.4	540.8	539.7	538.5	537.9	538.7	540.2	542.1	544.9	549.0
27.5	530.0	528.2	527.0	525.6	525.0	526.0	528.0	530.3	533.7	538.7
30.0	516.5	514.5	513.2	511.6	510.8	512.0	514.4	517.4	521.6	527.6
32.5	501.8	499.6	498.1	496.3	495.6	497.0	499.9	503.5	508.5	515.4
35.0	486.1	483.8	482.2	480.3	479.5	481.0	484.2	488.6	494.5	502.4
37.5	469.5	466.8	464.9	462.9	462.1	463.9	467.7	472.9	479.7	488.3
40.0	451.9	448.9	446.9	444.6	443.8	446.0	450.2	456.2	463.9	473.5
42.5	433.4	430.3	428.0	425.6	424.8	427.2	431.9	438.7	447.3	457.7
45.0	413.9	410.5	408.1	405.6	404.8	407.6	412.9	420.5	429.9	441.2
47.5	393.7	390.1	387.4	384.7	383.9	387.1	393.0	401.4	411.7	423.7
50.0	372.7	368.9	366.1	363.1	362.2	365.8	372.5	381.5	392.6	405.4
52.5	351.0	347.0	344.0	340.8	339.9	344.0	351.3	361.2	373.1	386.7
55.0	328.7	324.4	321.3	317.9	317.0	321.5	329.5	340.1	352.6	366.8
57.5	305.8	301.3	298.0	294.4	293.5	298.5	307.1	318.4	331.6	346.4
60.0	282.4	277.2	273.4	270.1	269.7	275.1	284.3	296.3	310.2	325.5
62.5	259.0	253.0	248.7	245.6	245.5	250.5	259.6	272.8	288.3	304.2
65.0	235.0	229.0	224.5	221.1	220.9	226.5	236.3	250.1	266.0	282.2
67.5	211.6	205.2	200.3	196.7	196.5	202.6	213.0	227.2	243.5	259.9
70.0	188.0	181.4	176.2	172.4	172.2	178.7	189.6	204.4	221.0	236.9
72.5	165.1	158.1	152.6	148.4	148.0	155.0	166.5	181.7	198.5	214.7
75.0	141.7	134.8	129.5	124.8	124.1	131.7	144.0	159.4	176.3	192.6
77.5	119.8	112.6	107.2	102.3	101.5	109.4	122.0	137.4	154.4	170.8
80.0	99.25	91.59	85.74	80.64	79.86	88.03	100.9	115.9	132.5	149.2
82.5	79.79	71.60	65.18	59.78	58.93	67.42	80.62	95.54	112.0	129.0
85.0	60.72	52.26	45.62	40.12	39.28	47.97	61.47	76.61	93.61	112.1
87.5	43.76	34.09	26.56	20.59	19.74	28.94	43.47	60.60	79.58	99.00
90.0	43.79	30.54	18.58	7.600	3.114	13.08	29.88	48.61	69.09	89.58
92.5	48.76	35.31	23.39	13.45	9.318	16.85	30.42	46.33	64.68	84.54
95.0	58.54	45.26	33.65	23.96	20.20	28.43	42.77	59.65	78.15	95.58
97.5	72.99	58.79	46.47	37.42	34.55	42.90	57.48	75.37	95.28	114.4
100.0	90.24	74.70	61.57	53.20	51.24	59.51	73.93	92.28	112.9	132.2
102.5	109.2	92.25	78.54	70.97	70.00	77.99	92.10	110.8	132.5	154.7
105.0	129.4	111.1	96.87	90.14	90.15	97.86	111.5	130.1	152.2	175.8
107.5	150.9	130.8	115.8	110.3	111.6	118.8	131.7	149.6	171.8	196.9
110.0	173.2	151.7	136.1	131.7	134.2	140.6	152.3	169.9	192.3	218.5
112.5	195.8	173.4	157.7	154.0	157.2	163.5	174.6	191.6	213.4	239.1
115.0	218.7	195.1	179.0	176.5	180.9	186.7	196.9	212.8	233.6	258.5
117.5	241.9	217.2	200.7	199.3	205.1	210.7	220.2	234.8	254.4	278.7
120.0	264.1	238.8	222.4	222.3	229.2	235.1	243.9	256.9	274.9	299.3
122.5	285.8	260.4	244.5	245.3	253.1	259.7	268.3	278.8	294.4	319.2
125.0	307.9	281.9	265.8	268.1	277.5	284.7	293.3	302.3	315.9	339.3
127.5	328.7	302.6	287.0	290.7	301.7	310.0	318.6	324.8	335.2	357.3
130.0	348.6	323.2	308.4	312.8	324.7	334.5	343.6	347.5	355.0	375.2
132.5	367.6	343.4	329.8	335.0	347.4	358.3	367.8	369.7	374.5	392.4
135.0	385.8	363.0	350.6	356.7	369.8	381.4	391.0	391.9	394.6	409.5
137.5	402.6	381.8	371.1	378.0	391.5	403.5	413.2	413.6	414.9	426.4
140.0	418.5	399.8	390.8	398.5	412.3	424.5	434.2	434.6	435.0	443.3
142.5	433.8	417.3	410.0	418.2	432.1	444.3	454.0	455.6	456.1	460.5
145.0	448.2	434.1	428.5	437.1	450.9	463.2	473.1	476.1	477.2	478.9
147.5	462.2	450.6	446.7	455.5	468.9	481.0	491.0	495.1	496.8	496.4
150.0	475.3	466.4	464.3	473.0	485.8	497.5	507.4	512.5	514.7	513.7
152.5	487.2	481.0	480.9	489.5	501.4	512.4	522.0	527.9	530.9	530.0
155.0	498.7	495.0	496.4	505.0	516.3	526.6	535.6	541.8	545.5	545.4
157.5	510.0	508.3	510.9	519.2	529.6	539.1	547.5	553.7	557.8	558.8
160.0	520.0	520.2	524.1	532.0	541.5	550.1	557.9	564.4	569.0	570.8
162.5	529.1	531.3	536.2	543.7	552.2	559.9	567.0	573.6	578.6	580.7
165.0	539.5	542.4	547.2	554.1	561.7	568.4	574.8	581.2	586.5	588.9
167.5	549.6	553.0	557.5	563.4	569.8	575.7	581.3	587.1	592.0	595.1
170.0	558.5	562.0	566.1	571.1	576.4	581.4	586.3	591.1	595.4	598.9
172.5	566.8	569.8	573.2	577.4	581.7	585.6	589.5	593.3	596.9	600.2
175.0	574.7	576.8	579.1	582.2	585.5	588.3	591.2	594.3	597.3	599.7
177.5	580.9	582.3	583.8	585.8	588.0	589.9	591.7	593.7	595.7	597.8
180.0	599.7	599.7	599.7	599.7	599.7	599.7	599.7	599.7	599.7	599.7

C Range: 0 - 360DEG
 C Interval: 5.0DEG
 Test Speed: MEDIUM
 Temperature: 25.3DEG
 Operators: DAMIN
 Test Date: 2020-09-15

γ Range: 0 - 180DEG
 γ Interval: 0.5DEG
 Test System: EVERFINE GO-2000_V1 SYSTEM V2.0.291
 Humidity: 65.0%
 Test Distance: 10.000m [K=1.0000]
 Remarks:

Photometric Data Table [cd]

G/C	300.0	305.0	310.0	315.0	320.0	325.0	330.0	335.0	340.0	345.0
0.0	596.6	596.4	596.3	596.1	596.0	595.9	595.7	595.6	595.4	594.6
2.5	597.0	596.8	596.6	596.5	596.4	596.2	596.0	595.8	595.6	594.7
5.0	596.1	596.0	595.9	595.9	595.9	595.9	595.8	595.7	595.6	594.7
7.5	594.2	594.3	594.4	594.7	594.9	595.1	595.2	595.3	595.5	594.9
10.0	591.1	591.5	592.0	592.7	593.4	594.0	594.5	595.0	595.4	595.0
12.5	587.1	588.0	589.0	590.2	591.4	592.5	593.5	594.4	595.0	594.8
15.0	582.3	583.8	585.3	587.2	589.1	590.7	592.1	593.3	594.2	594.0
17.5	576.5	578.7	581.0	583.6	586.1	588.2	590.1	591.6	592.7	592.4
20.0	569.8	572.7	575.8	579.2	582.4	585.1	587.3	589.1	590.3	589.9
22.5	562.2	566.0	569.8	573.9	577.9	581.0	583.6	585.7	587.0	586.4
25.0	553.7	558.3	563.0	567.8	572.3	576.0	578.9	581.2	582.6	581.8
27.5	544.4	549.8	555.2	560.7	565.8	569.8	572.9	575.5	577.0	576.1
30.0	534.2	540.3	546.4	552.7	558.4	562.7	566.0	568.8	570.3	569.1
32.5	522.9	529.9	536.7	543.6	549.7	554.4	557.9	560.8	562.3	560.9
35.0	510.8	518.5	526.0	533.4	540.0	544.9	548.7	551.7	553.2	551.6
37.5	497.6	506.1	514.2	522.2	529.2	534.4	538.3	541.4	542.8	541.0
40.0	483.6	492.8	501.4	509.8	517.3	522.8	526.9	530.2	531.6	529.5
42.5	468.6	478.3	487.4	496.5	504.4	510.0	514.2	517.6	519.0	516.7
45.0	452.8	463.1	472.8	482.2	490.4	496.3	500.6	504.1	505.5	503.0
47.5	436.1	446.9	457.0	466.9	475.5	481.6	486.0	489.6	490.9	488.2
50.0	418.4	429.8	440.3	450.6	459.5	465.7	470.3	474.1	475.5	472.6
52.5	400.3	412.0	422.9	433.5	442.7	449.1	453.8	457.7	459.1	456.0
55.0	381.1	393.3	404.5	415.6	425.1	431.6	436.2	440.2	441.8	438.5
57.5	361.2	373.8	385.4	396.9	406.7	413.3	418.0	422.3	423.9	420.4
60.0	340.7	353.7	365.5	377.2	387.3	394.1	399.0	403.4	405.0	401.5
62.5	319.7	333.0	345.2	357.2	367.4	374.4	379.3	383.9	385.7	382.0
65.0	298.0	311.6	324.0	336.3	346.7	353.9	359.0	363.7	365.6	361.9
67.5	275.9	289.9	302.7	315.2	325.9	333.2	338.4	343.2	345.1	341.4
70.0	252.5	267.2	280.8	293.7	304.5	312.0	317.4	322.3	324.3	320.5
72.5	230.4	245.3	259.2	272.2	283.1	290.7	296.1	301.1	303.3	299.7
75.0	208.4	223.5	237.3	249.4	259.7	268.2	274.8	280.3	282.7	279.4
77.5	186.8	201.9	215.8	228.0	238.6	247.6	254.6	259.7	261.8	259.4
80.0	165.7	181.0	195.1	208.3	220.0	229.4	236.8	242.3	244.9	243.0
82.5	146.1	162.5	178.0	192.1	204.5	214.5	222.4	228.3	231.2	229.7
85.0	130.7	148.0	164.2	179.1	192.1	202.4	210.5	216.8	220.0	218.9
87.5	118.2	135.9	152.6	168.7	183.0	193.9	202.2	208.7	212.0	211.1
90.0	109.9	129.1	147.4	164.6	179.6	190.7	199.0	205.2	208.3	207.2
92.5	105.3	126.4	146.8	165.7	181.9	193.1	201.1	207.2	210.1	207.8
95.0	113.6	133.6	153.8	173.6	190.7	202.0	209.6	214.6	217.3	218.4
97.5	134.4	156.4	178.4	199.8	218.1	229.9	237.4	241.0	242.3	243.3
100.0	153.4	180.3	208.3	235.3	257.7	269.7	275.9	278.8	279.0	278.1
102.5	179.0	206.7	236.6	271.1	301.3	316.5	323.6	325.0	323.1	321.2
105.0	202.3	232.2	265.6	306.9	344.5	366.6	378.6	380.0	376.2	373.0
107.5	225.6	257.6	294.2	340.7	384.8	414.7	433.6	438.2	435.9	433.5
110.0	248.9	283.0	321.8	368.6	415.2	456.2	486.8	496.7	497.2	497.3
112.5	269.7	305.9	347.6	397.8	448.9	496.0	533.6	551.3	558.6	562.1
115.0	288.9	325.9	369.2	421.2	474.4	522.8	564.2	594.2	614.2	623.3
117.5	308.8	346.1	389.6	440.4	494.0	548.6	597.8	633.4	658.9	674.5
120.0	329.6	365.6	407.4	456.1	509.0	566.4	620.1	660.6	691.4	712.7
122.5	350.0	384.4	424.1	470.5	521.8	580.1	635.4	676.1	708.3	735.3
125.0	368.6	401.0	438.5	483.0	532.4	588.1	642.5	687.9	725.5	753.4
127.5	385.6	416.0	451.3	493.3	540.0	591.9	643.8	691.7	732.0	758.1
130.0	401.9	431.3	464.7	502.5	544.4	591.3	639.4	687.6	729.2	755.3
132.5	417.0	444.8	476.2	510.0	547.2	589.1	633.0	679.3	720.4	746.9
135.0	430.8	456.9	486.3	516.9	549.9	586.7	625.7	668.4	707.0	732.4
137.5	444.1	467.7	494.9	523.2	553.3	585.1	618.4	655.4	689.6	714.3
140.0	457.1	477.6	502.2	528.5	556.2	583.7	611.9	642.5	671.2	694.3
142.5	469.5	487.3	509.2	532.3	556.7	581.8	607.0	631.9	655.2	675.9
145.0	484.1	497.7	515.6	535.3	556.8	579.4	602.1	624.0	644.3	662.3
147.5	498.3	508.2	522.2	538.1	556.0	575.4	595.1	614.0	631.8	649.1
150.0	513.6	519.5	528.9	541.5	556.1	572.1	588.4	603.7	618.4	633.0
152.5	528.9	531.8	537.5	546.5	557.5	569.8	582.5	594.7	606.4	618.1
155.0	544.4	544.9	547.0	552.0	559.0	567.8	577.6	587.4	596.7	605.0
157.5	558.5	557.8	557.7	559.5	562.9	568.2	574.6	581.8	588.6	593.4
160.0	571.0	570.2	569.0	568.0	567.9	569.6	572.9	578.4	583.9	586.8
162.5	581.3	581.2	580.3	578.4	576.5	575.2	574.8	576.7	579.1	580.0
165.0	589.9	590.7	590.6	588.9	586.6	584.1	581.9	580.8	580.2	579.4
167.5	597.0	598.0	598.1	597.5	596.2	593.9	591.3	589.3	587.5	585.7
170.0	601.5	603.0	603.6	603.4	602.6	601.5	600.0	597.8	595.5	594.0
172.5	603.0	605.2	606.7	607.3	607.2	606.5	605.5	604.2	602.7	601.6
175.0	601.8	604.0	605.9	607.6	608.6	608.6	608.1	607.7	607.1	606.3
177.5	599.6	601.0	602.2	603.7	605.0	605.8	606.4	607.2	607.5	606.9
180.0	599.7	599.7	599.7	599.7	599.7	599.7	599.7	599.7	599.7	599.7

C Range: 0 - 360DEG
 C Interval: 5.0DEG
 Test Speed: MEDIUM
 Temperature: 25.3DEG
 Operators: DAMIN
 Test Date: 2020-09-15

γ Range: 0 - 180DEG
 γ Interval: 0.5DEG
 Test System: EVERFINE GO-2000_V1 SYSTEM V2.0.291
 Humidity: 65.0%
 Test Distance: 10.000m [K=1.0000]
 Remarks:

Photometric Data Table [cd]

G/C	350.0	355.0
0.0	595.4	600.3
2.5	595.6	600.5
5.0	595.6	600.6
7.5	595.9	600.8
10.0	596.0	600.7
12.5	595.7	600.0
15.0	594.7	598.5
17.5	592.9	596.1
20.0	590.0	592.6
22.5	586.2	588.0
25.0	581.1	582.2
27.5	574.9	575.2
30.0	567.4	567.0
32.5	558.7	557.6
35.0	549.0	547.1
37.5	538.0	535.4
40.0	525.9	522.7
42.5	512.8	508.9
45.0	498.7	494.0
47.5	483.5	478.3
50.0	467.4	461.6
52.5	450.5	444.1
55.0	432.7	425.8
57.5	414.1	406.9
60.0	395.1	387.4
62.5	375.3	367.3
65.0	355.0	346.6
67.5	334.4	326.0
70.0	313.6	305.3
72.5	293.0	284.8
75.0	272.7	264.6
77.5	253.9	246.0
80.0	237.7	229.8
82.5	224.8	217.0
85.0	214.2	206.3
87.5	206.4	198.4
90.0	202.4	194.0
92.5	203.3	199.3
95.0	218.1	216.5
97.5	243.0	241.1
100.0	276.2	273.6
102.5	318.3	314.7
105.0	369.0	364.5
107.5	429.4	424.3
110.0	494.4	489.1
112.5	560.9	556.4
115.0	624.8	622.2
117.5	681.6	682.1
120.0	724.8	728.7
122.5	753.6	760.9
125.0	772.0	780.9
127.5	775.1	786.6
130.0	772.7	785.6
132.5	765.1	778.5
135.0	750.3	763.6
137.5	732.5	745.0
140.0	712.1	723.5
142.5	692.4	702.2
145.0	676.5	684.4
147.5	663.0	670.1
150.0	645.0	651.6
152.5	627.9	633.8
155.0	612.1	617.4
157.5	597.6	602.4
160.0	589.3	593.0
162.5	581.3	584.2
165.0	579.3	580.8
167.5	583.9	582.1
170.0	592.5	590.4
172.5	600.2	598.2
175.0	605.1	603.6
177.5	606.0	605.3
180.0	599.7	599.7

C Range: 0 - 360DEG
 C Interval: 5.0DEG
 Test Speed: MEDIUM
 Temperature: 25.3DEG
 Operators: DAMIN
 Test Date: 2020-09-15

γ Range: 0 - 180DEG
 γ Interval: 0.5DEG
 Test System: EVERFINE GO-2000_V1 SYSTEM V2.0.291
 Humidity: 65.0%
 Test Distance: 10.000m [K=1.0000]
 Remarks: