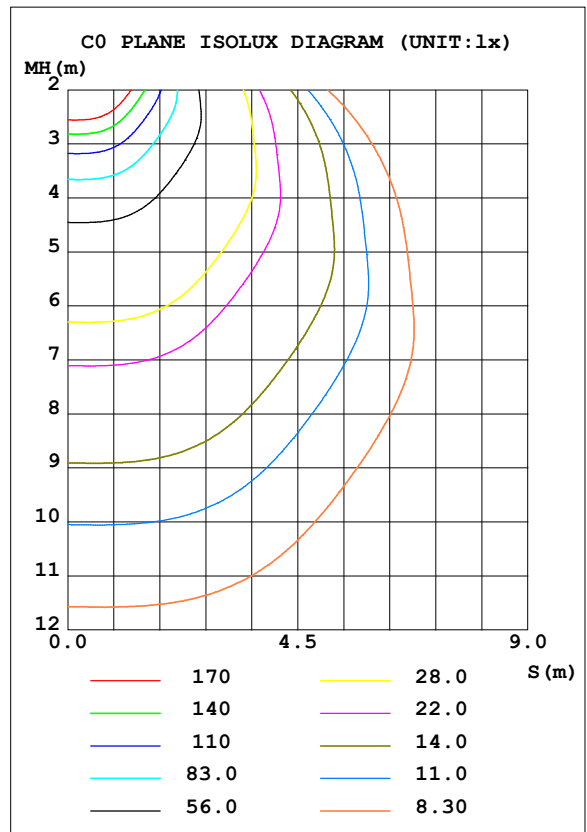
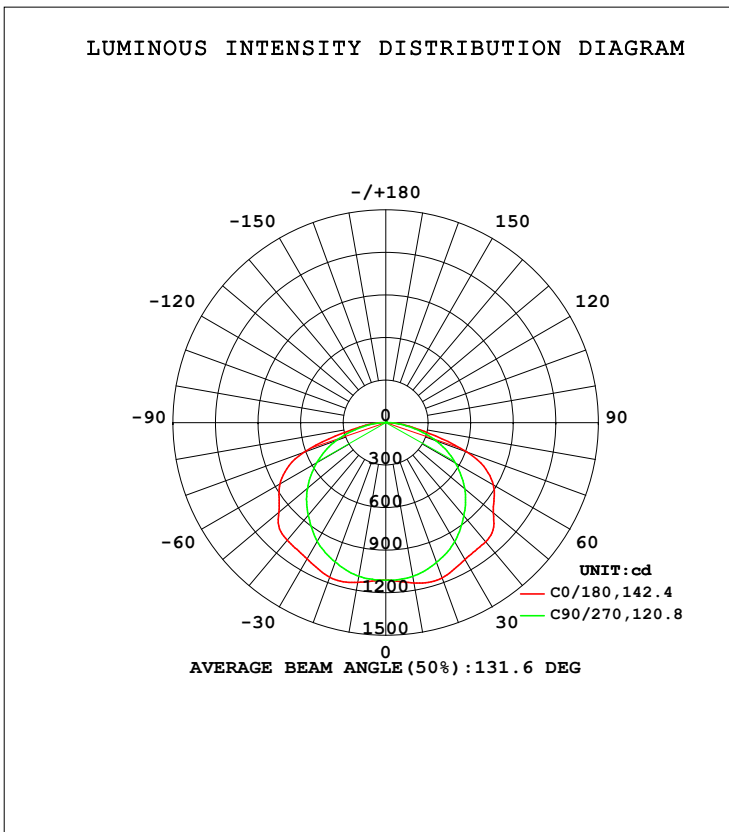


LUMINAIRE PHOTOMETRIC TEST REPORT

Test:U:277.04V I:0.1495A P:37.39W PF:0.9029 Freq:60.01Hz Lamp Flux:3658.15x1 lm		
NAME: TT22-DM-04W-35K	TYPE:	WEIGHT:
SPEC.:	DIM.:	SERIAL No.:
MFR.: OKT	SUR.:	Shielding Angle:

DATA OF LAMP		PHOTOMETRIC DATA Eff: 110.78 lm/W			
MODEL	TT22-DM-04W-35K	I _{max} (cd)	1169	S/MH (C0/180)	1.51
NOMINAL POWER (W)	40	LOR (%)	113.2	S/MH (C90/270)	1.29
RATED VOLTAGE (V)	277	TOTAL FLUX (lm)	4142.0	<input type="checkbox"/> UP, DN (C0-180)	0.2,56.7
NOMINAL FLUX (lm)	3658.15	CIE CLASS	DIRECT	<input type="checkbox"/> UP, DN (C180-360)	0.1,56.2
LAMPS INSIDE	1	<input type="checkbox"/> up (%)	0.3	CIBSE SHR NOM	1.50
TEST VOLTAGE (V)	277.0	<input type="checkbox"/> down (%)	112.9	CIBSE SHR MAX	1.55



C Range: 0 - 360DEG
 C Interval: 22.5DEG
 Test Speed: HIGH
 Temperature: 25.5DEG
 Operators: Jenson
 Test Date: 17 December 2020

Range: 0 - 180DEG
 Interval: 1.0DEG
 Test System: EVERFINE GO-R5000_V2 SYSTEM V2.00.426
 Humidity: 37.6%
 Test Distance: 26.000m [K=1.0000]
 Remarks:

ZONAL FLUX DIAGRAM

ZONAL FLUX DIAGRAM:

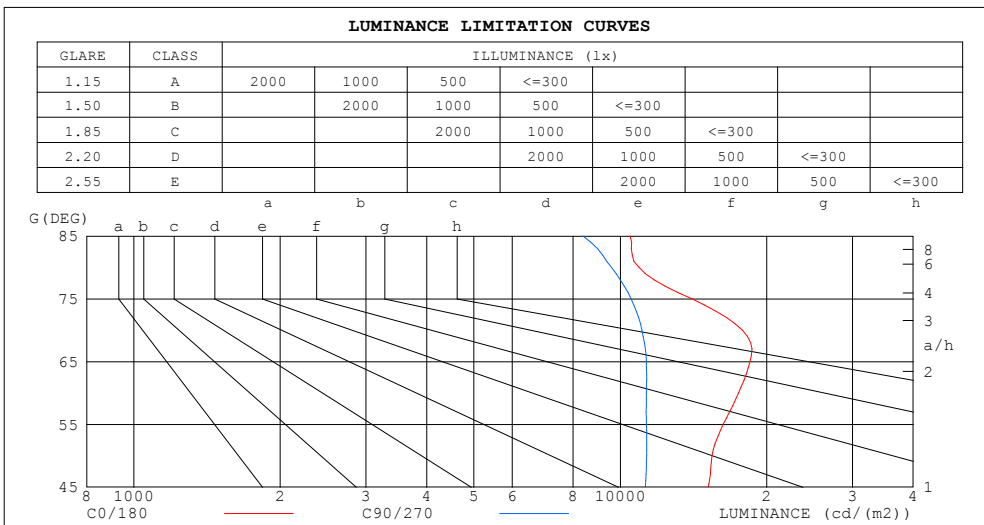
mm	C0	C45	C90	C135	C180	C225	C270	C315	mm	□ zone	□ total	%lum, lamp
10	1148	1127	1101	1124	1144	1122	1100	1125	0- 10	106.8	106.8	2.58,2.92
20	1165	1128	1048	1121	1160	1119	1046	1124	10- 20	318.1	424.9	10.3,11.6
30	1115	1076	971.5	1068	1110	1064	967.0	1068	20- 30	503.5	928.5	22.4,25.4
40	1097	990.5	857.0	978.0	1081	975.3	851.6	977.6	30- 40	639.1	1568	37.8,42.9
50	992.0	916.0	727.7	895.3	984.5	896.1	721.3	899.3	40- 50	724.9	2292	55.3,62.7
60	875.3	766.5	565.7	753.0	861.3	748.9	560.1	750.2	50- 60	727.7	3020	72.9,82.6
70	609.8	562.2	378.8	548.5	612.7	547.3	372.4	547.9	60- 70	636.3	3656	88.3,100
80	189.7	211.0	166.6	215.5	188.6	204.0	159.9	203.3	70- 80	380.6	4037	97.5,110
90	1.627	1.919	1.250	1.843	2.065	1.029	0.7973	0.9752	80- 90	93.57	4131	99.7,113
100	1.935	1.823	1.082	1.893	1.153	0.9156	0.7593	0.9206	90-100	1.389	4132	99.8,113
110	2.707	2.560	1.820	2.378	1.740	1.373	1.154	1.612	100-110	1.711	4134	99.8,113
120	3.053	2.703	1.925	2.652	1.918	1.373	1.653	1.664	110-120	1.951	4136	99.8,113
130	3.054	2.517	2.527	2.309	1.828	1.373	2.057	1.717	120-130	1.974	4138	99.9,113
140	2.764	1.658	2.425	1.435	1.769	1.373	2.148	1.515	130-140	1.661	4139	99.9,113
150	2.087	1.006	1.994	1.001	1.780	1.367	2.279	1.836	140-150	1.178	4141	100,113
160	1.385	0.9295	1.994	0.9736	1.785	1.345	2.449	2.167	150-160	0.7923	4141	100,113
170	1.532	1.086	1.993	1.089	1.797	1.322	2.337	2.296	160-170	0.4739	4142	100,113
180	1.728	1.144	2.619	1.205	1.728	1.316	2.107	2.066	170-180	0.1662	4142	100,113
DEG	LUMINOUS INTENSITY:cd									UNIT:lm		

C Range: 0 - 360DEG
 C Interval: 22.5DEG
 Test Speed: HIGH
 Temperature: 25.5DEG
 Operators:Jenson
 Test Date:17 December 2020

□ Range: 0 - 180DEG
 □ Interval: 1.0DEG
 Test System:EVERFINE GO-R5000_V2 SYSTEM V2.00.426
 Humidity: 37.6%
 Test Distance:26.000m [K=1.0000]
 Remarks:

LUMINANCE LIMITATION CURVES

Test:U:277.04V I:0.1495A P:37.39W PF:0.9029 Freq:60.01Hz Lamp Flux:3658.15x1 lm		
NAME: TT22-DM-04W-35K	TYPE:	WEIGHT:
SPEC.:	DIM.:	SERIAL No.:
MFR.: OKT	SUR.:	Shielding Angle:



LUMINANCE cd/(m2)		
G (DEG)	C0/180	C90/270
85	10473	8383
80	10929	9598
75	14022	10518
70	17834	11078
65	18473	11310
60	17511	11317
55	16278	11315
50	15437	11323
45	15158	11264

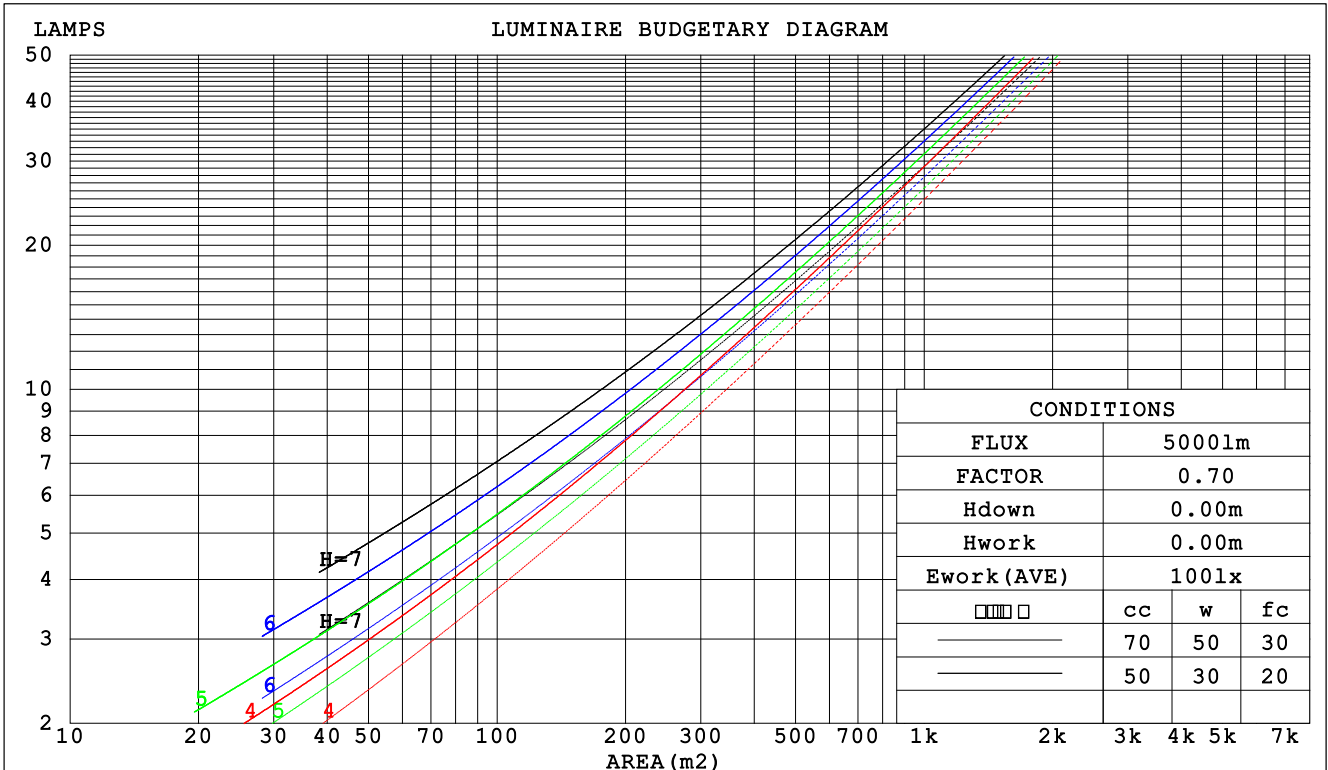
C Range: 0 - 360DEG
 C Interval: 22.5DEG
 Test Speed: HIGH
 Temperature: 25.5DEG
 Operators: Jenson
 Test Date: 17 December 2020

Range: 0 - 180DEG
 Interval: 1.0DEG
 Test System: EVERFINE GO-R5000_V2 SYSTEM V2.00.426
 Humidity: 37.6%
 Test Distance: 26.000m [K=1.0000]
 Remarks:

CU AND LUMINAIRE BUDGETARY ESTIMATE DIAGRAM

Test:U:277.04V I:0.1495A P:37.39W PF:0.9029 Freq:60.01Hz Lamp Flux:3658.15x1 lm		
NAME: TT22-DM-04W-35K	TYPE:	WEIGHT:
SPEC.:	DIM.:	SERIAL No.:
MFR.: OKT	SUR.:	Shielding Angle:

□cc	80%			70%			50%			30%			10%			0
□w	50%	30%	10%	50%	30%	10%	50%	30%	10%	50%	30%	10%	50%	30%	10%	0
□fc	20%			20%			20%			20%			20%			0
RCR	RCR:Room Cavity Ratio						Coefficients of Utilization(CU)									
0.0	1.35	1.35	1.35	1.32	1.32	1.32	1.26	1.26	1.26	1.20	1.20	1.20	1.15	1.15	1.15	1.13
1.0	1.16	1.11	1.06	1.13	1.09	1.04	1.08	1.04	1.01	1.04	1.01	.98	.00	.97	.95	.92
2.0	.00	.91	.84	.97	.90	.83	.93	.87	.81	.89	.84	.79	.86	.81	.77	.75
3.0	.86	.76	.69	.85	.75	.68	.81	.73	.67	.78	.71	.65	.75	.69	.64	.62
4.0	.76	.65	.57	.74	.64	.57	.71	.63	.56	.69	.61	.55	.66	.59	.54	.51
5.0	.67	.56	.48	.66	.56	.48	.63	.54	.47	.61	.53	.47	.59	.52	.46	.44
6.0	.60	.49	.42	.59	.49	.41	.57	.48	.41	.55	.47	.41	.53	.46	.40	.38
7.0	.54	.44	.36	.53	.43	.36	.51	.42	.36	.50	.42	.36	.48	.41	.35	.33
8.0	.49	.39	.32	.48	.39	.32	.47	.38	.32	.45	.37	.32	.44	.37	.31	.29
9.0	.45	.35	.29	.44	.35	.29	.43	.34	.28	.42	.34	.28	.40	.33	.28	.26
10.0	.41	.32	.26	.41	.32	.26	.40	.31	.26	.38	.31	.25	.37	.30	.25	.23



C Range: 0 - 360DEG
 C Interval: 22.5DEG
 Test Speed: HIGH
 Temperature: 25.5DEG
 Operators:Jenson
 Test Date:17 December 2020

□ Range: 0 - 180DEG
 □ Interval: 1.0DEG
 Test System:EVERFINE GO-R5000_V2 SYSTEM V2.00.426
 Humidity: 37.6%
 Test Distance:26.000m [K=1.0000]
 Remarks:

WEC AND CCEC

Test:U:277.04V I:0.1495A P:37.39W PF:0.9029 Freq:60.01Hz Lamp Flux:3658.15x1 lm		
NAME: TT22-DM-04W-35K	TYPE:	WEIGHT:
SPEC.:	DIM.:	SERIAL No.:
MFR.: OKT	SUR.:	Shielding Angle:

<input type="checkbox"/> cc	80%	70%	50%	30%	10%	0
<input type="checkbox"/> w	50% 30% 10%	50% 30% 10%	50% 30% 10%	50% 30% 10%	50% 30% 10%	0
<input type="checkbox"/> fc	20%	20%	20%	20%	20%	0
RCR	RCR:Room Cavity Ratio		Wall Exitance Coefficients (WEC)			
0.0						
1.0	.381 .216 .069	.372 .212 .067	.357 .205 .065	.343 .198 .063	.330 .191 .062	
2.0	.356 .195 .060	.349 .192 .059	.335 .186 .058	.323 .181 .057	.311 .176 .055	
3.0	.327 .174 .052	.321 .172 .052	.309 .167 .051	.297 .163 .050	.287 .159 .049	
4.0	.300 .156 .046	.294 .154 .045	.283 .150 .045	.273 .147 .044	.264 .143 .044	
5.0	.275 .140 .041	.270 .139 .040	.261 .136 .040	.252 .133 .040	.244 .130 .039	
6.0	.254 .127 .036	.250 .126 .036	.241 .124 .036	.233 .121 .036	.226 .119 .035	
7.0	.235 .116 .033	.231 .115 .033	.224 .113 .033	.217 .111 .032	.210 .109 .032	
8.0	.219 .107 .030	.215 .106 .030	.209 .104 .030	.202 .102 .030	.196 .101 .029	
9.0	.205 .099 .028	.201 .098 .028	.195 .096 .027	.189 .095 .027	.184 .093 .027	
10.0	.192 .092 .026	.189 .091 .025	.183 .090 .025	.178 .088 .025	.173 .087 .025	

<input type="checkbox"/> cc	80%	70%	50%	30%	10%	0
<input type="checkbox"/> w	50% 30% 10%	50% 30% 10%	50% 30% 10%	50% 30% 10%	50% 30% 10%	0
<input type="checkbox"/> fc	20%	20%	20%	20%	20%	0
RCR	RCR:Room Cavity Ratio		Ceiling Cavity Exitance Coefficients (CCEC)			
0.0	.218 .218 .218	.186 .186 .186	.127 .127 .127	.073 .073 .073	.023 .023 .023	
1.0	.209 .179 .152	.178 .154 .131	.122 .106 .091	.070 .061 .053	.023 .020 .017	
2.0	.201 .152 .110	.172 .131 .095	.118 .090 .066	.068 .053 .039	.022 .017 .013	
3.0	.193 .132 .083	.165 .114 .072	.113 .079 .051	.066 .046 .030	.021 .015 .010	
4.0	.184 .117 .066	.158 .101 .057	.109 .071 .040	.063 .041 .024	.020 .013 .008	
5.0	.176 .106 .054	.151 .091 .047	.104 .064 .033	.060 .037 .020	.019 .012 .006	
6.0	.168 .096 .045	.144 .083 .039	.099 .058 .028	.058 .034 .016	.019 .011 .005	
7.0	.160 .088 .039	.137 .077 .034	.095 .054 .024	.055 .032 .014	.018 .010 .005	
8.0	.152 .082 .034	.131 .071 .029	.091 .050 .021	.053 .029 .012	.017 .010 .004	
9.0	.145 .076 .030	.125 .066 .026	.086 .047 .019	.050 .028 .011	.016 .009 .004	
10.0	.138 .071 .027	.119 .062 .024	.083 .044 .017	.048 .026 .010	.016 .008 .003	

C Range: 0 - 360DEG
 C Interval: 22.5DEG
 Test Speed: HIGH
 Temperature: 25.5DEG
 Operators:Jenson
 Test Date:17 December 2020

Range: 0 - 180DEG
 Interval: 1.0DEG
 Test System:EVERFINE GO-R5000_V2 SYSTEM V2.00.426
 Humidity: 37.6%
 Test Distance:26.000m [K=1.0000]
 Remarks:

UGR(Unified Glare Rating) Table

Test:U:277.04V I:0.1495A P:37.39W PF:0.9029 Freq:60.01Hz Lamp Flux:3658.15x1 lm										
NAME: TT22-DM-04W-35K					TYPE:			WEIGHT:		
SPEC.:					DIM.:			SERIAL No.:		
MFR.: OKT					SUR.:			Shielding Angle:		
ceiling/cavity	0.7	0.7	0.5	0.5	0.3	0.7	0.7	0.5	0.5	0.3
walls	0.5	0.3	0.5	0.3	0.3	0.5	0.3	0.5	0.3	0.3
working plane	0.2	0.2	0.2	0.2	0.2	0.2	0.2	0.2	0.2	0.2
Room dimensions	Viewed crosswise					Viewed endwise				
x = 2H y = 2H	22.7	24.4	23.1	24.7	25.1	20.7	22.4	21.0	22.7	23.0
3H	25.2	26.7	25.5	27.1	27.4	22.7	24.3	23.1	24.6	24.9
4H	25.8	27.3	26.2	27.6	28.0	23.4	24.9	23.8	25.3	25.6
6H	26.1	27.5	26.6	27.9	28.3	24.0	25.4	24.4	25.7	26.1
8H	26.3	27.6	26.7	28.0	28.4	24.2	25.5	24.6	25.9	26.3
12H	26.3	27.6	26.8	28.0	28.4	24.3	25.6	24.7	25.9	26.4
4H 2H	23.4	24.8	23.8	25.2	25.6	21.8	23.3	22.2	23.7	24.0
3H	26.0	27.3	26.4	27.7	28.1	24.1	25.4	24.5	25.8	26.2
4H	26.8	27.9	27.2	28.3	28.8	25.0	26.1	25.4	26.6	27.0
6H	27.2	28.2	27.7	28.7	29.2	25.7	26.7	26.1	27.1	27.6
8H	27.4	28.3	27.9	28.8	29.3	25.9	26.8	26.4	27.3	27.7
12H	27.5	28.4	28.0	28.9	29.3	26.1	26.9	26.5	27.4	27.8
8H 4H	27.1	28.0	27.6	28.5	29.0	25.6	26.5	26.1	27.0	27.4
6H	27.7	28.5	28.2	28.9	29.4	26.4	27.2	26.9	27.7	28.2
8H	27.9	28.6	28.4	29.1	29.6	26.7	27.4	27.2	27.9	28.4
12H	28.1	28.7	28.6	29.2	29.8	27.0	27.6	27.5	28.1	28.6
12H 4H	27.1	28.0	27.6	28.5	28.9	25.6	26.5	26.1	27.0	27.4
6H	27.7	28.4	28.3	28.9	29.4	26.5	27.2	27.0	27.7	28.2
8H	28.0	28.6	28.5	29.1	29.7	26.9	27.5	27.4	28.0	28.6
CIE190: 2010										

CIE190: 2010
Area: 0.1 m2

C Range: 0 - 360DEG
C Interval: 22.5DEG
Test Speed: HIGH
Temperature: 25.5DEG
Operators:Jenson
Test Date:17 December 2020

Range: 0 - 180DEG
 Interval: 1.0DEG
Test System:EVERFINE GO-R5000_V2 SYSTEM V2.00.426
Humidity: 37.6%
Test Distance:26.000m [K=1.0000]
Remarks:

UTILIZATION FACTORS TABLE

Test:U:277.04V I:0.1495A P:37.39W PF:0.9029 Freq:60.01Hz Lamp Flux:3658.15x1 lm		
NAME: TT22-DM-04W-35K	TYPE:	WEIGHT:
SPEC.:	DIM.:	SERIAL No.:
MFR.: OKT	SUR.:	Shielding Angle:

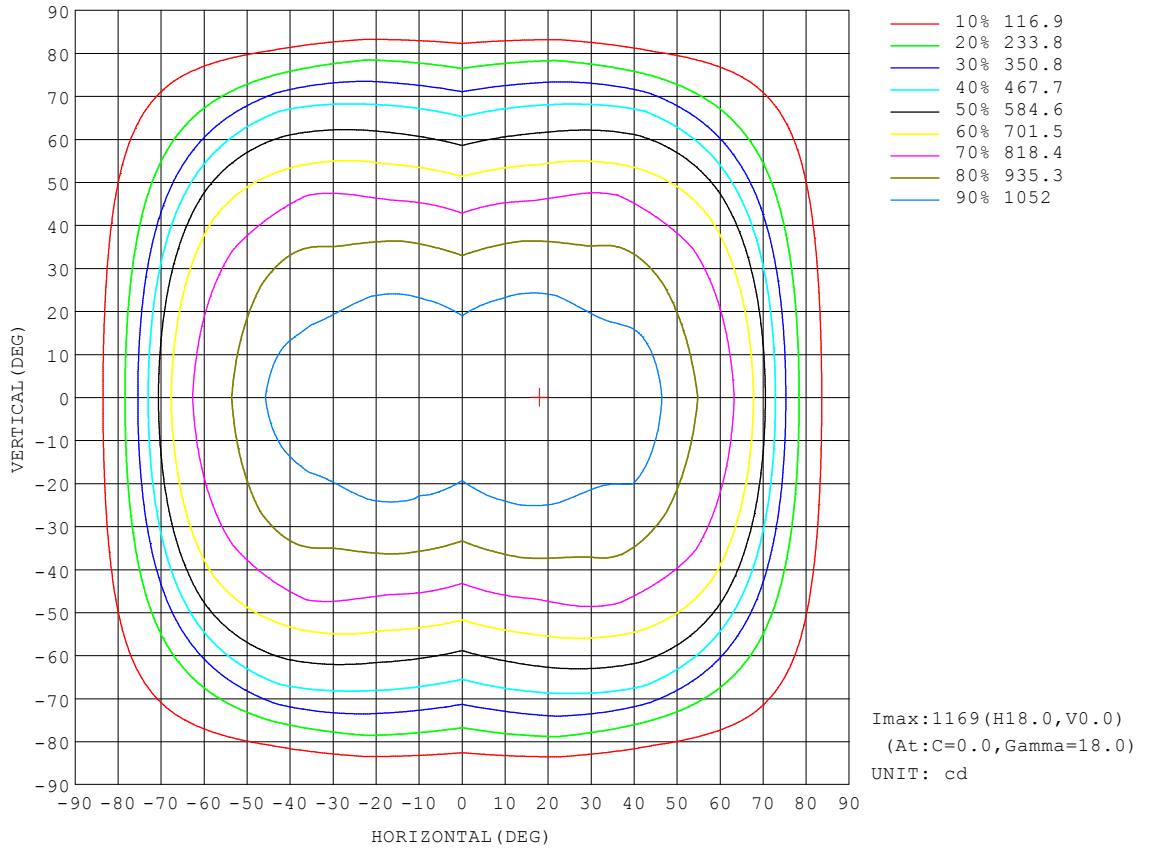
REFLECTANCE										
Ceiling	0.8	0.8	0.8	0.7	0.7	0.7	0.5	0.5	0.5	0
Walls	0.7	0.5	0.3	0.7	0.5	0.3	0.7	0.5	0.3	0
Working plane	0.2	0.2	0.2	0.2	0.2	0.2	0.2	0.2	0.2	0
ROOM INDEX	UTILIZATION FACTORS (PERCENT) $k(RI) \times RCR = 5$									
k = 0.60	61	47	39	60	47	39	59	46	38	31
0.80	72	58	49	71	58	49	69	57	49	40
1.00	82	68	59	80	68	59	78	69	58	50
1.25	90	77	68	88	76	68	85	75	67	58
1.50	96	84	75	94	83	75	91	81	73	64
2.00	105	94	86	102	93	85	98	90	83	74
2.50	109	100	92	107	98	91	103	95	89	79
3.00	114	105	98	111	103	97	106	100	95	84
4.00	119	112	106	116	110	104	111	106	101	91
5.00	122	116	111	119	114	109	114	109	105	95
ROOM INDEX	UF(total)									Direct
According to DIN EN 13032-2 2004			Suspended				SHRNOM = 1.25			

C Range: 0 - 360DEG
 C Interval: 22.5DEG
 Test Speed: HIGH
 Temperature: 25.5DEG
 Operators:Jenson
 Test Date:17 December 2020

Range: 0 - 180DEG
 Interval: 1.0DEG
 Test System:EVERFINE GO-R5000_V2 SYSTEM V2.00.426
 Humidity: 37.6%
 Test Distance:26.000m [K=1.0000]
 Remarks:

ISOCANDELA DIAGRAM

Test:U:277.04V I:0.1495A P:37.39W PF:0.9029 Freq:60.01Hz Lamp Flux:3658.15x1 lm		
NAME: TT22-DM-04W-35K	TYPE:	WEIGHT:
SPEC.:	DIM.:	SERIAL No.:
MFR.: OKT	SUR.:	Shielding Angle:

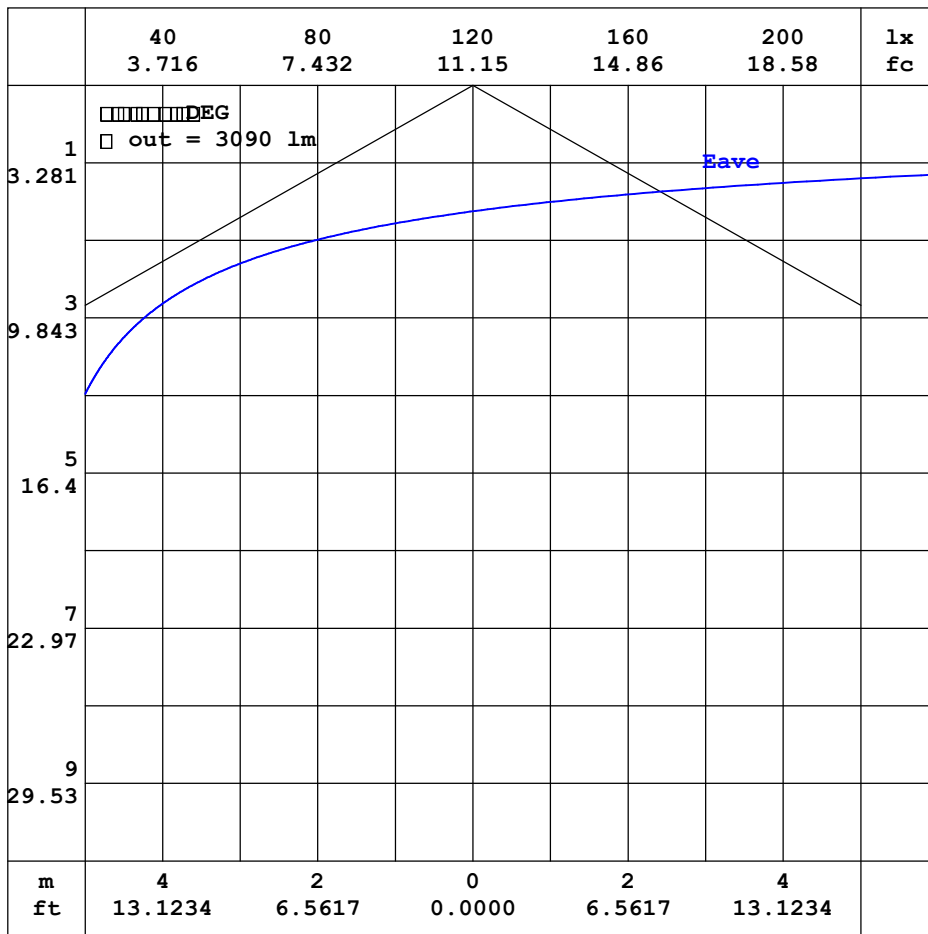


C Range: 0 - 360DEG
 C Interval: 22.5DEG
 Test Speed: HIGH
 Temperature: 25.5DEG
 Operators:Jenson
 Test Date:17 December 2020

Range: 0 - 180DEG
 Interval: 1.0DEG
 Test System:EVERFINE GO-R5000_V2 SYSTEM V2.00.426
 Humidity: 37.6%
 Test Distance:26.000m [K=1.0000]
 Remarks:

AAI CURVES

Test:U:277.04V I:0.1495A P:37.39W PF:0.9029 Freq:60.01Hz Lamp Flux:3658.15x1 lm		
NAME: TT22-DM-04W-35K	TYPE:	WEIGHT:
SPEC.:	DIM.:	SERIAL No.:
MFR.: OKT	SUR.:	Shielding Angle:



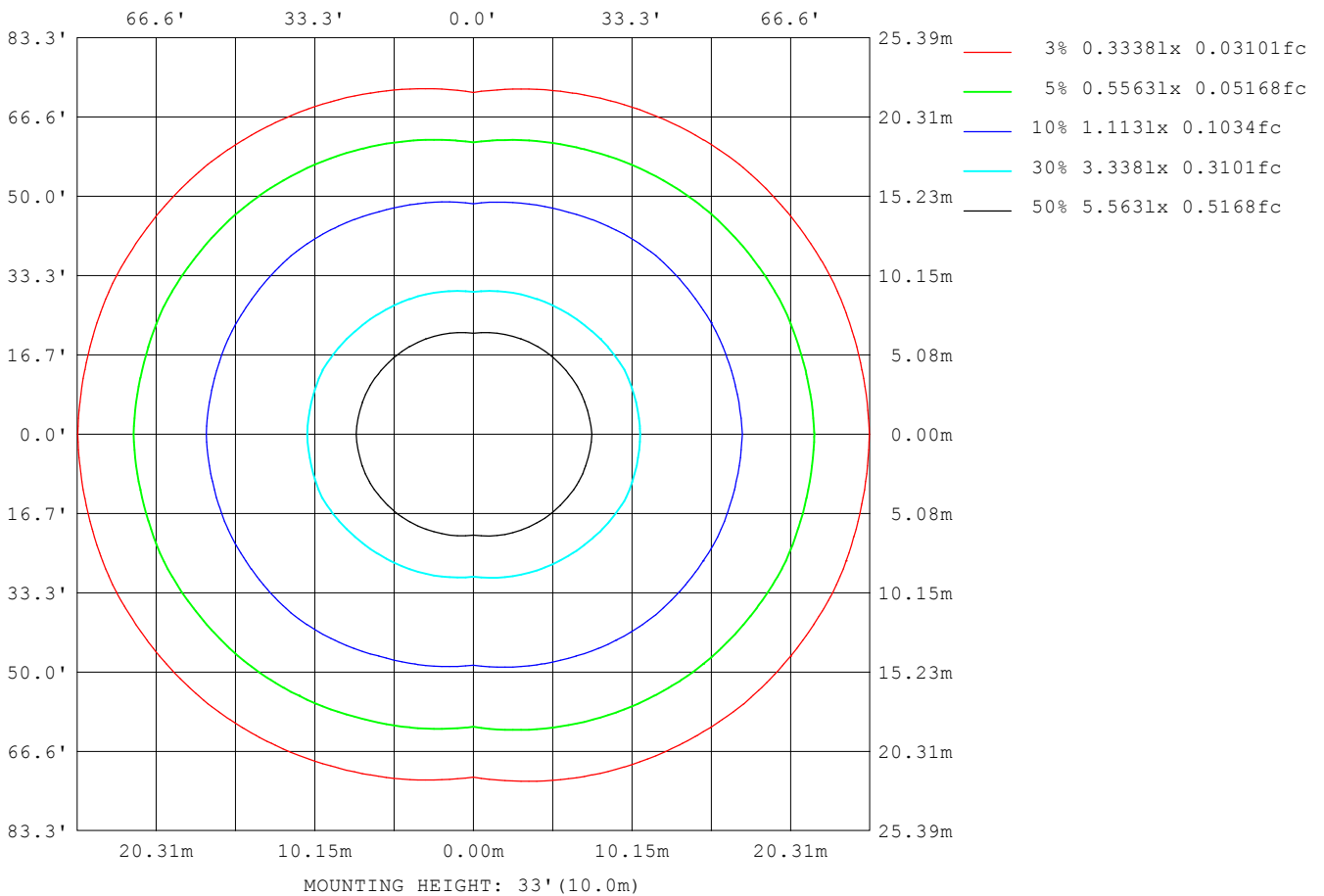
Note: The Curves indicate the illuminated area and the average illumination when the luminaire is at different distance.

C Range: 0 - 360DEG
 C Interval: 22.5DEG
 Test Speed: HIGH
 Temperature: 25.5DEG
 Operators: Jenson
 Test Date: 17 December 2020

Range: 0 - 180DEG
 Interval: 1.0DEG
 Test System: EVERFINE GO-R5000_V2 SYSTEM V2.00.426
 Humidity: 37.6%
 Test Distance: 26.000m [K=1.0000]
 Remarks:

ISOLUX DIAGRAM

Test:U:277.04V I:0.1495A P:37.39W PF:0.9029 Freq:60.01Hz Lamp Flux:3658.15x1 lm		
NAME: TT22-DM-04W-35K	TYPE:	WEIGHT:
SPEC.:	DIM.:	SERIAL No.:
MFR.: OKT	SUR.:	Shielding Angle:



C Range: 0 - 360DEG
 C Interval: 22.5DEG
 Test Speed: HIGH
 Temperature: 25.5DEG
 Operators: Jenson
 Test Date: 17 December 2020

Range: 0 - 180DEG
 Interval: 1.0DEG
 Test System: EVERFINE GO-R5000_V2 SYSTEM V2.00.426
 Humidity: 37.6%
 Test Distance: 26.000m [K=1.0000]
 Remarks:

LED Avg.L Report

Test:U:277.04V I:0.1495A P:37.39W PF:0.9029 Freq:60.01Hz Lamp Flux:3658.15x1 lm		
NAME: TT22-DM-04W-35K	TYPE:	WEIGHT:
SPEC.:	DIM.:	SERIAL No.:
MFR.: OKT	SUR.:	Shielding Angle:

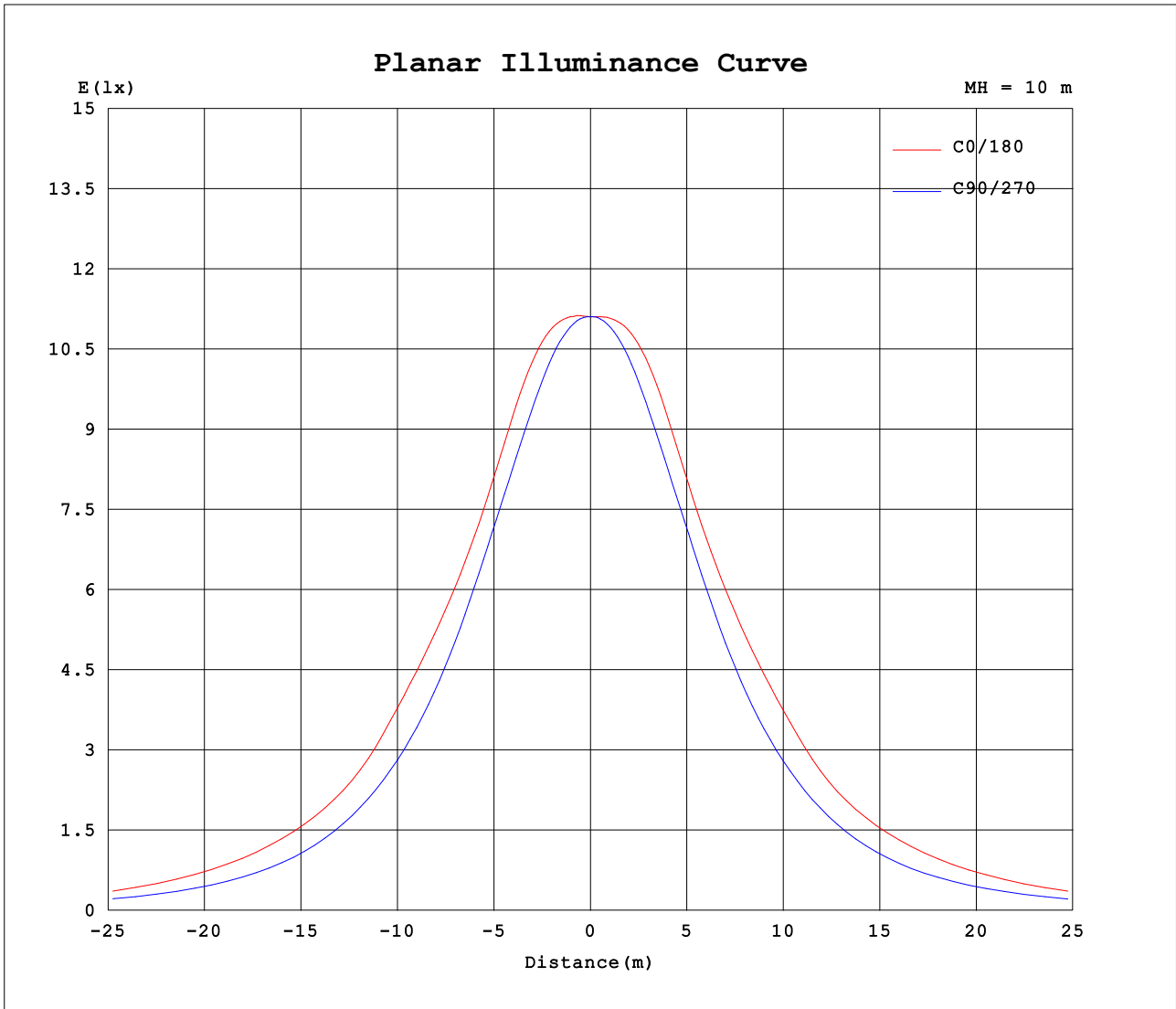
AvgL	cd/m2
L_0~180 (65) av	18358
L_0~180 (75) av	14145
L_0~180 (85) av	10303
L_90~270 (65) av	11234
L_90~270 (75) av	10358
L_90~270 (85) av	7992
L_45 (65) av	15610
L_45 (75) av	15472
L_45 (85) av	9024

Standard: GB/T 29293-2012

C Range: 0 - 360DEG
 C Interval: 22.5DEG
 Test Speed: HIGH
 Temperature: 25.5DEG
 Operators:Jenson
 Test Date:17 December 2020

Range: 0 - 180DEG
 Interval: 1.0DEG
 Test System:EVERFINE GO-R5000_V2 SYSTEM V2.00.426
 Humidity: 37.6%
 Test Distance:26.000m [K=1.0000]
 Remarks:

Planar Illuminance Curve



C Range: 0 - 360DEG
 C Interval: 22.5DEG
 Test Speed: HIGH
 Temperature: 25.5DEG
 Operators: Jenson
 Test Date: 17 December 2020

Range: 0 - 180DEG
 Interval: 1.0DEG
 Test System: EVERFINE GO-R5000_V2 SYSTEM V2.00.426
 Humidity: 37.6%
 Test Distance: 26.000m [K=1.0000]
 Remarks:

LUMINOUS DISTRIBUTION INTENSITY DATA

Test:U:277.04V I:0.1495A P:37.39W PF:0.9029 Freq:60.01Hz Lamp Flux:3658.15x1 lm		
NAME: TT22-DM-04W-35K	TYPE:	WEIGHT:
SPEC.:	DIM.:	SERIAL No.:
MFR.: OKT	SUR.:	Shielding Angle:

Table--1

UNIT: cd

C (DEG) □ (DEG)	0	22.5	45	67.5	90	112.5	135	157.5	180	202.5	225	247.5	270	292.5	315	337.5			
0	1110	1110	1110	1110	1110	1110	1110	1110	1110	1110	1110	1110	1110	1110	1110	1110			
5	1124	1123	1118	1113	1110	1111	1115	1121	1122	1120	1115	1111	1109	1112	1117	1121			
10	1148	1143	1127	1110	1101	1108	1124	1141	1144	1139	1122	1107	1100	1108	1125	1140			
15	1167	1158	1131	1099	1079	1096	1125	1153	1161	1151	1123	1095	1077	1096	1128	1153			
20	1165	1157	1128	1081	1048	1076	1121	1154	1160	1150	1119	1076	1046	1076	1124	1151			
25	1142	1141	1111	1057	1014	1047	1103	1137	1137	1132	1101	1049	1011	1049	1104	1133			
30	1115	1111	1076	1020	971	1012	1068	1104	1110	1099	1064	1011	967	1011	1068	1100			
35	1102	1082	1033	978	917	969	1024	1072	1093	1068	1021	968	911	968	1024	1070			
40	1097	1063	990	930	857	919	978	1050	1081	1046	975	919	852	919	978	1050			
45	1072	1046	951	870	796	858	934	1029	1059	1026	934	858	791	858	935	1032			
50	992	984	916	806	728	793	895	978	984	971	896	793	721	791	899	973			
55	933	907	860	738	649	722	845	893	919	889	843	723	643	720	846	894			
60	875	844	767	661	566	643	753	826	861	825	749	645	560	642	750	831			
65	780	753	673	577	478	559	655	736	771	737	655	562	472	559	657	738			
70	610	604	562	474	379	461	549	599	613	596	547	459	372	458	548	593			
75	363	378	405	357	272	345	406	385	369	377	395	342	264	339	396	372			
80	190	201	211	226	167	219	216	198	189	198	204	214	160	211	203	195			
85	91.3	90.9	81.7	93.4	73.0	93.0	82.2	87.1	88.3	86.5	77.3	85.4	66.3	82.9	73.4	85.9			
90	1.63	1.67	1.92	1.54	1.25	1.61	1.84	1.95	2.07	0.92	1.03	1.03	0.80	0.80	0.98	1.62			
95	1.55	1.66	1.79	1.43	0.85	1.20	1.78	1.91	1.29	0.92	1.00	0.89	0.70	0.77	0.86	1.15			
100	1.93	1.90	1.82	1.59	1.08	1.20	1.89	1.90	1.15	0.98	0.92	0.93	0.76	0.75	0.92	1.21			
105	2.47	2.40	2.29	1.74	1.36	1.48	2.12	2.58	1.44	1.18	1.20	1.14	0.95	0.94	1.26	1.55			
110	2.71	2.79	2.56	1.83	1.82	1.74	2.38	2.82	1.74	1.38	1.37	1.43	1.15	1.09	1.61	1.84			
115	3.05	2.99	2.63	2.05	1.87	1.64	2.54	3.16	1.86	0.53	1.37	1.53	1.38	1.41	1.64	1.84			
120	3.05	3.06	2.70	1.94	1.92	1.71	2.65	3.16	1.92	1.61	1.37	1.50	1.65	1.60	1.66	1.84			
125	3.05	3.02	2.77	2.73	2.51	2.07	2.64	3.16	1.90	1.60	1.37	1.71	1.77	1.74	1.69	1.84			
130	3.05	2.98	2.52	2.69	2.53	2.12	2.31	3.10	1.83	1.59	1.37	1.99	2.06	2.24	1.72	1.84			
135	2.88	2.73	2.17	2.65	2.55	2.17	2.12	2.76	1.76	1.58	1.37	1.98	2.10	2.27	1.66	1.84			
140	2.76	2.47	1.66	2.57	2.42	2.22	1.44	2.52	1.77	1.57	1.37	1.97	2.15	2.30	1.52	1.79			
145	2.42	2.12	1.14	2.19	2.11	2.11	1.03	2.15	1.77	1.56	1.37	1.96	2.19	2.34	1.54	1.73			
150	2.09	1.84	1.01	1.89	1.99	1.84	1.00	1.90	1.78	1.55	1.37	1.95	2.28	2.37	1.84	1.68			
155	1.79	1.47	0.97	1.86	1.99	1.54	0.92	1.61	1.77	1.52	1.36	1.94	2.45	2.40	2.10	1.62			
160	1.38	1.33	0.93	1.82	1.99	1.60	0.97	1.38	1.79	1.56	1.34	1.71	2.45	2.42	2.17	1.60			
165	1.44	1.30	0.98	1.79	1.99	1.60	1.03	1.45	1.84	1.61	1.33	1.55	2.45	2.45	2.23	1.60			
170	1.53	1.32	1.09	1.94	1.99	1.83	1.09	1.67	1.80	1.61	1.32	1.54	2.34	2.74	2.30	1.61			
175	1.79	1.32	1.15	2.11	2.44	2.06	1.15	1.78	1.74	1.61	1.32	1.24	2.11	2.34	2.12	1.61			
180	1.73	1.32	1.14	2.11	2.62	2.06	1.21	1.78	1.73	1.78	1.32	1.14	2.11	2.40	2.07	1.21			

C Range: 0 - 360DEG
 C Interval: 22.5DEG
 Test Speed: HIGH
 Temperature: 25.5DEG
 Operators:Jenson
 Test Date:17 December 2020

□ Range: 0 - 180DEG
 □ Interval: 1.0DEG
 Test System:EVERFINE GO-R5000_V2 SYSTEM V2.00.426
 Humidity: 37.6%
 Test Distance:26.000m [K=1.0000]
 Remarks: